

MERCER
COMMERCIAL



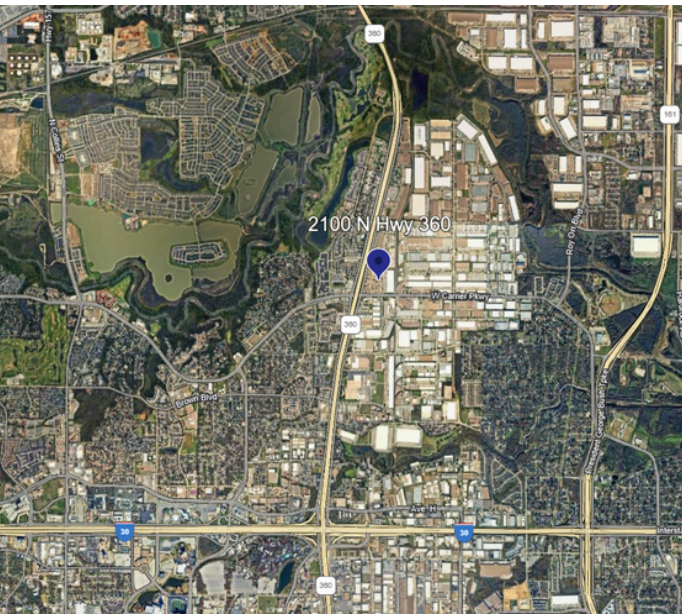
COMPANY
REAL ESTATE



FOR LEASE

AVAILABLE: 1,010 SF

2100 N HWY 360 #1600, GRAND PRAIRIE, TX 75050



PROPERTY FEATURES

- Available SF: 1,010
- 14' Clear Height
- 1 Private Office
- 1 Grade Level Door
- 1 Restroom
- Reception Area

CORBY HODGKISS, SIOR

Executive Vice President
(469) 360-3918
chodgkiss@mercerc-company.com

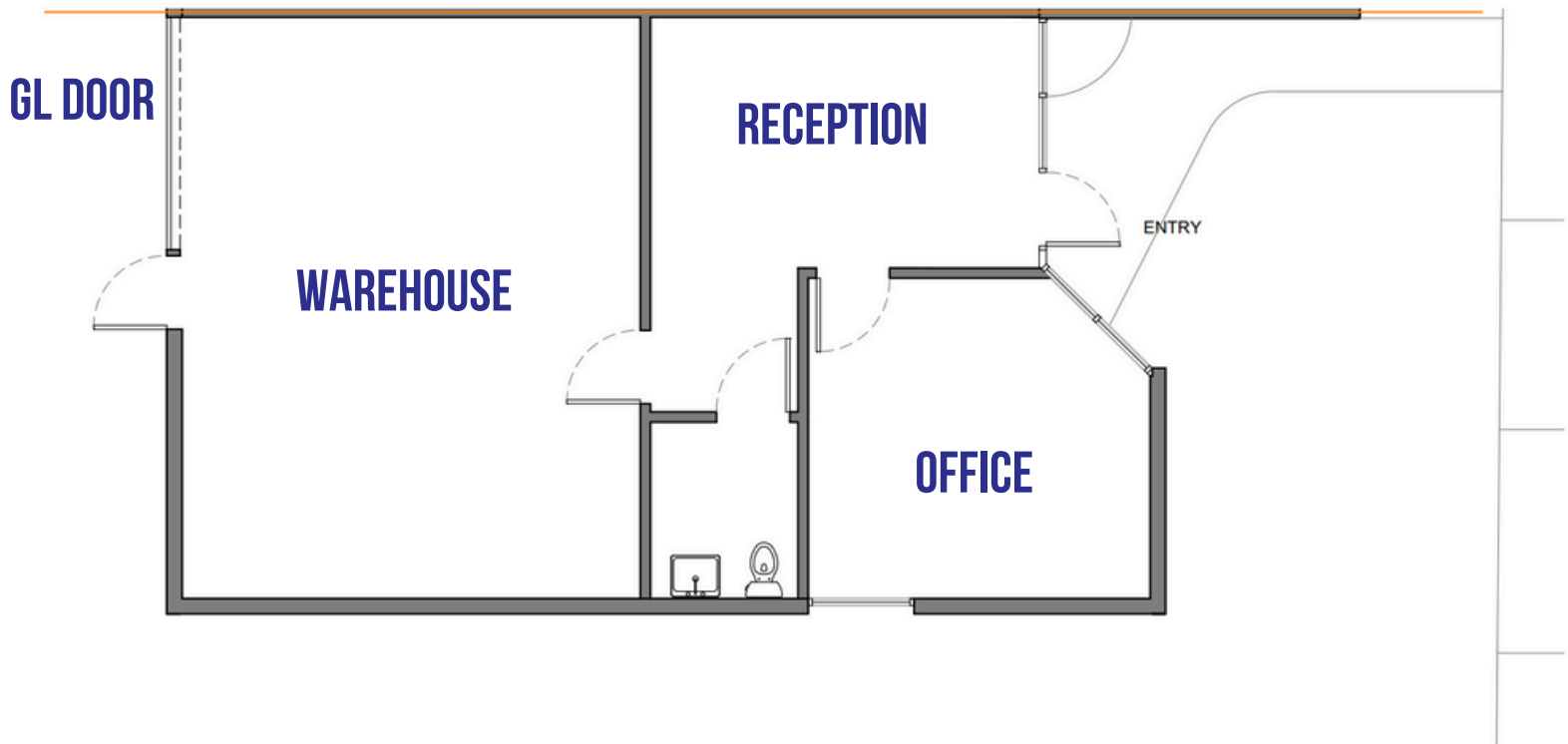
NICK FULTON

Market Director
(469) 616-8783
nfulton@mercerc-company.com

AVAILABLE: 1,010 SF

2100 N HWY 360 #1600, GRAND PRAIRIE, TX 75050

FLOORPLAN



CORBY HODGKISS, SIOR

Executive Vice President
(469) 360-3918



NICK FULTON

Market Director
(469) 616-8783

The information contained herein has been given to us by the owner of the property or other sources we deem reliable. We have no reason to doubt its accuracy, but we do not guarantee it. All information should be verified before purchase or lease.