

# CVCB



CENTRAL  
VALLEY  
COMMERCIAL  
BROKERS, INC

# FOR LEASE

## 169 Central Avenue

APN: 027-150-05



## Property Details

- 2217 SF Retail Space
- \$1.15/SF NNN
- Existing beauty salon
- 12ft ceilings
- High vehicle & foot traffic area
- Located in the heart of downtown Shafter
- Water – City of Shafter
- Sewer – City of Shafter
- Electrical – PG&E

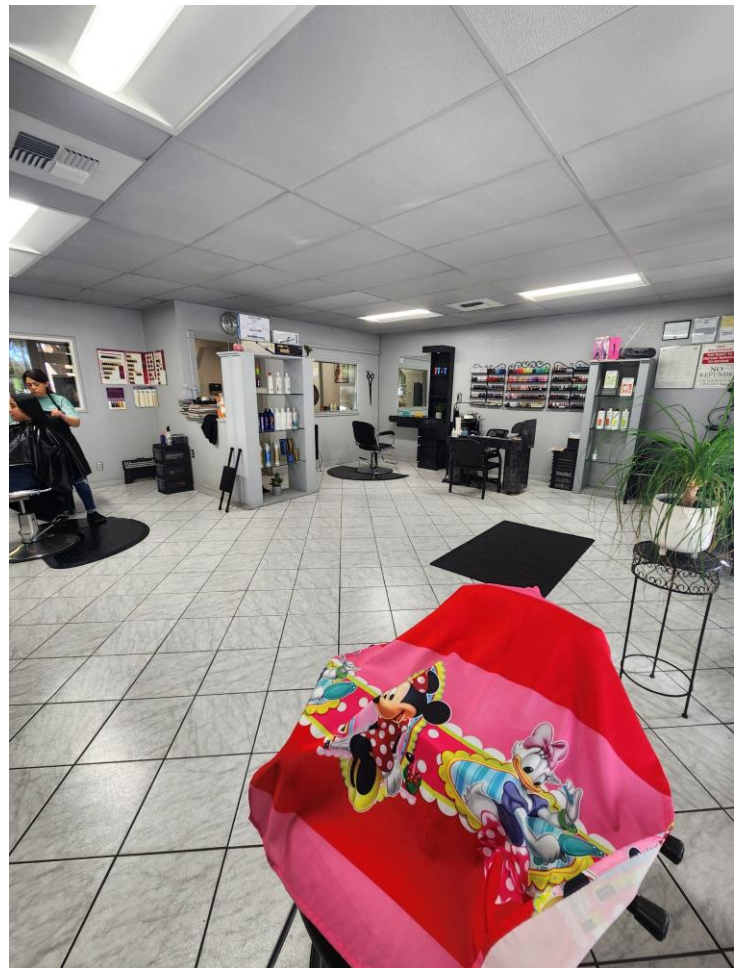
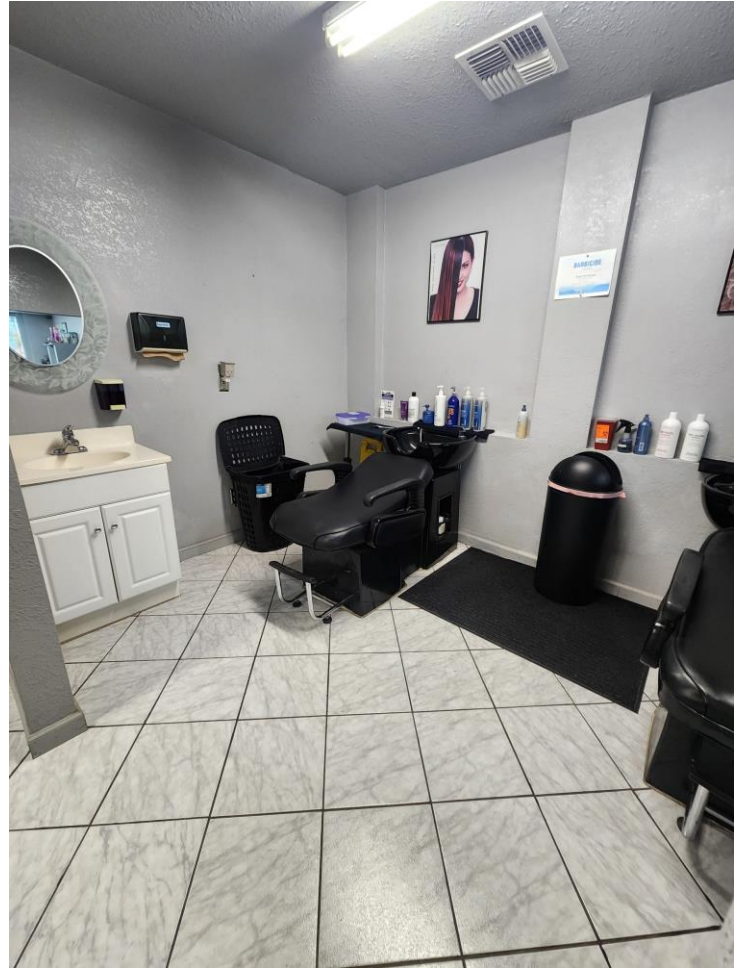
**HENRY E. MENDEZ, JR.**

CA RE #01127054 CA DRE #02084340 • Broker/ Principal  
hmendez@cvcbrokers.com • 661.404.4090 Office  
930 Truxtun Ave., Suite 101, Bakersfield, CA 93301

*The information contained herein may have been obtained from sources other than CVCB. We have not verified such information and make no guarantees, warranties, or representations about such information. It is your responsibility to independently confirm its accuracy and completeness prior to purchasing/leasing the property.*



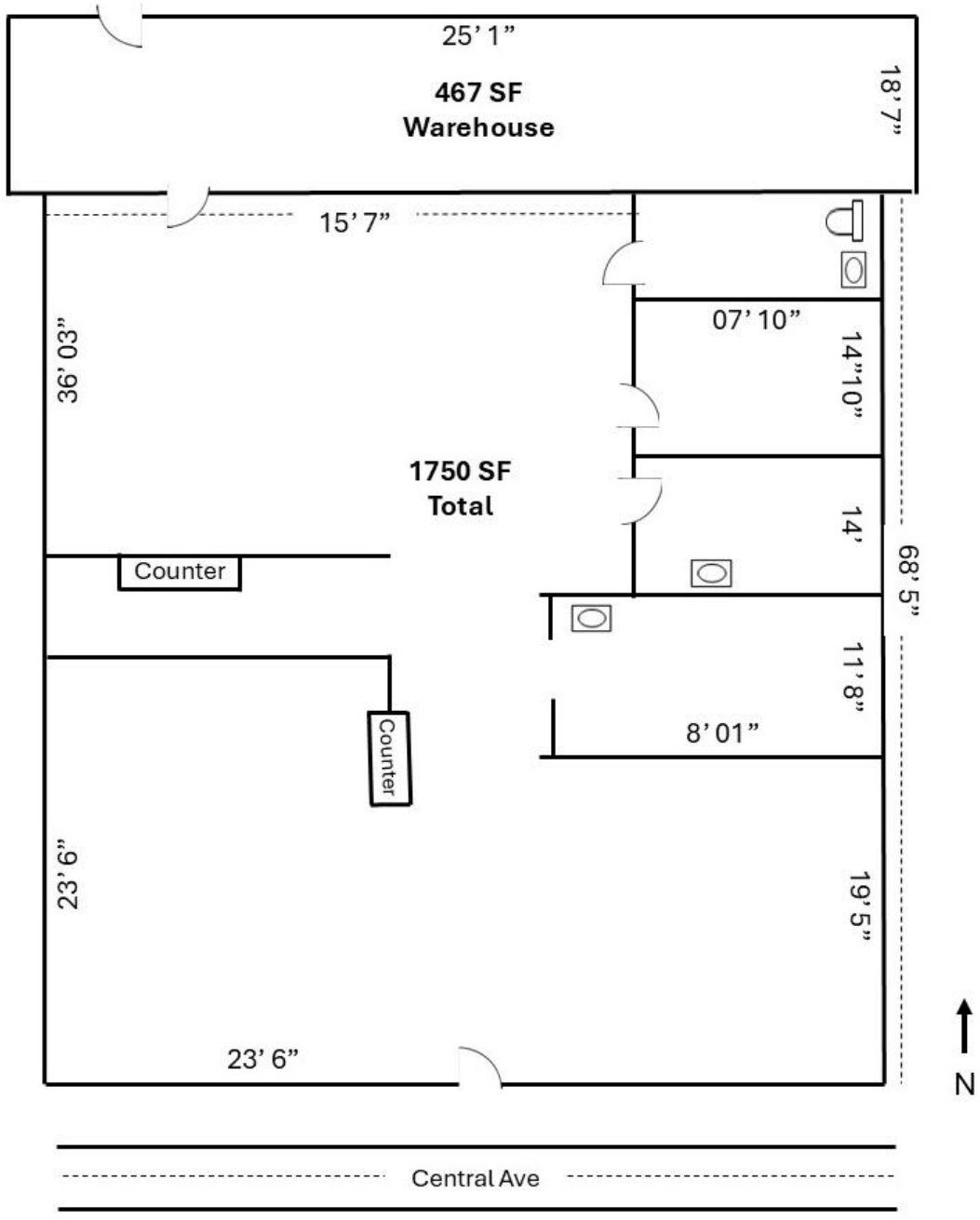
# Property Photos



# FOR LEASE

169 Central Avenue

## Floor Plan



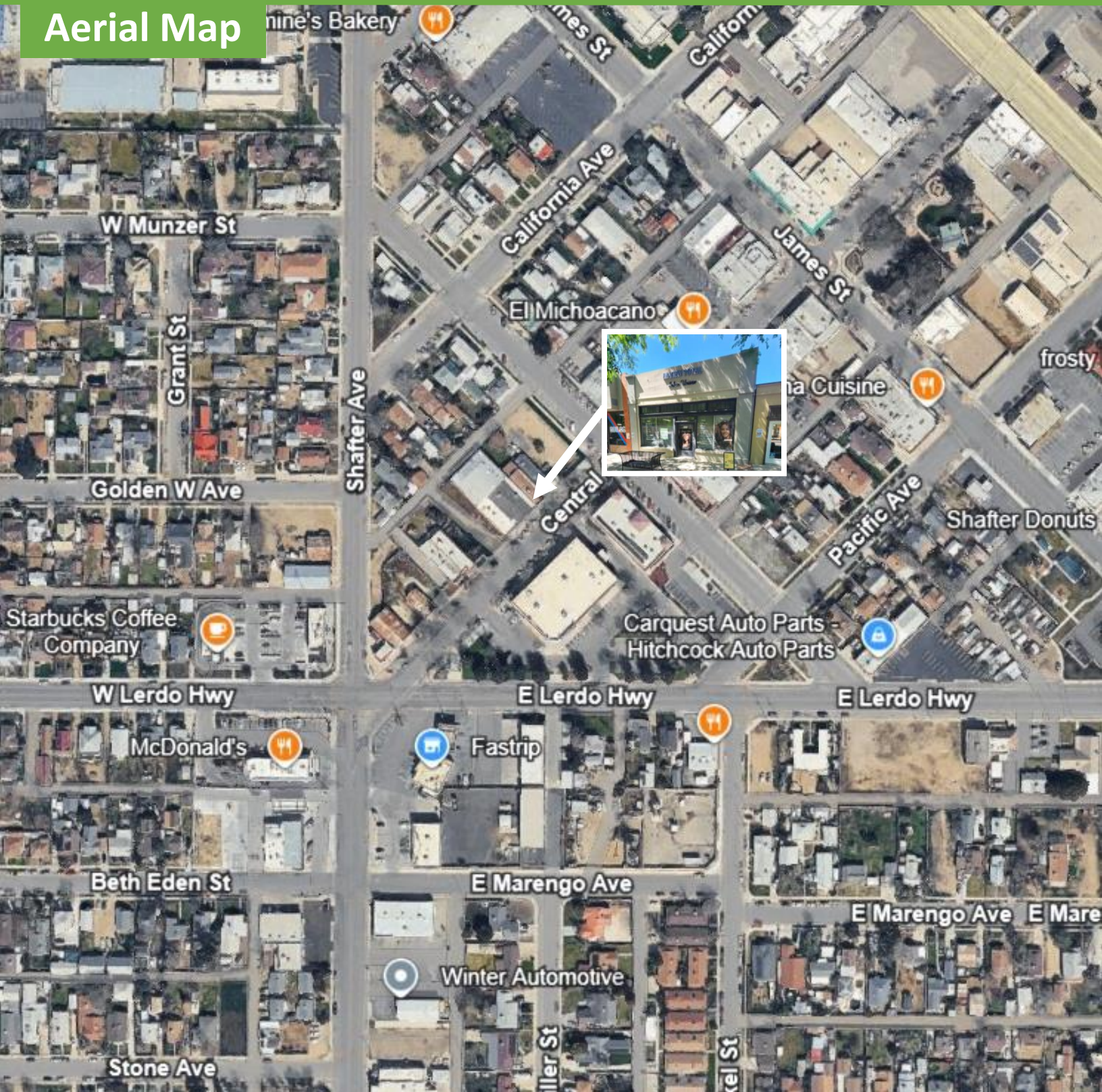
**HENRY E. MENDEZ, JR.**  
CA RE #01127054 CA DRE #02084340 • Broker/ Principal  
hmendez@cvcbrokers.com • 661.404.4090 Office  
930 Truxtun Ave., Suite 101, Bakersfield, CA 93301

*The information contained herein may have been obtained from sources other than CVCB. We have not verified such information and make no guarantees, warranties, or representations about such information. It is your responsibility to independently confirm its accuracy and completeness prior to purchasing/leasing the property.*

# FOR LEASE

169 Central Avenue

Aerial Map



**HENRY E. MENDEZ, JR.**

CA RE #01127054 CA DRE #02084340 • Broker/ Principal

hmendez@cvcbrokers.com • 661.404.4090 Office

930 Truxtun Ave., Suite 101, Bakersfield, CA 93301

*The information contained herein may have been obtained from sources other than CVCB. We have not verified such information and make no guarantees, warranties, or representations about such information. It is your responsibility to independently confirm its accuracy and completeness prior to purchasing/leasing the property.*