



## Office Sublease

Cascade Station I  
9600 NE Cascades Pkwy  
Portland, OR 97220

### Space Profile:

<b>Premises</b>	Suite 180 (3,847 SF)
<b>Rental Rate</b>	\$27.00/SF FS
<b>Availability</b>	Now
<b>Term</b>	Thru 1/31/2029

### Features:

- Class A office with on-site gym and secured entryways
- Easy Access to downtown Portland and Vancouver via I-205 and the Max light rail
- Close proximity to restaurants and services such as Starbucks, Buffalo Wild Wings, Fuller's Burger Shack, Chipotle, Hyatt Place, Residence Inn, Target, Ikea, Best Buy, Safeway, and gas stations.
- FF&E included
- Parking ratio of 4:1000, free of charge
- Easy ramp access to I-205 and I-5

### Contact:

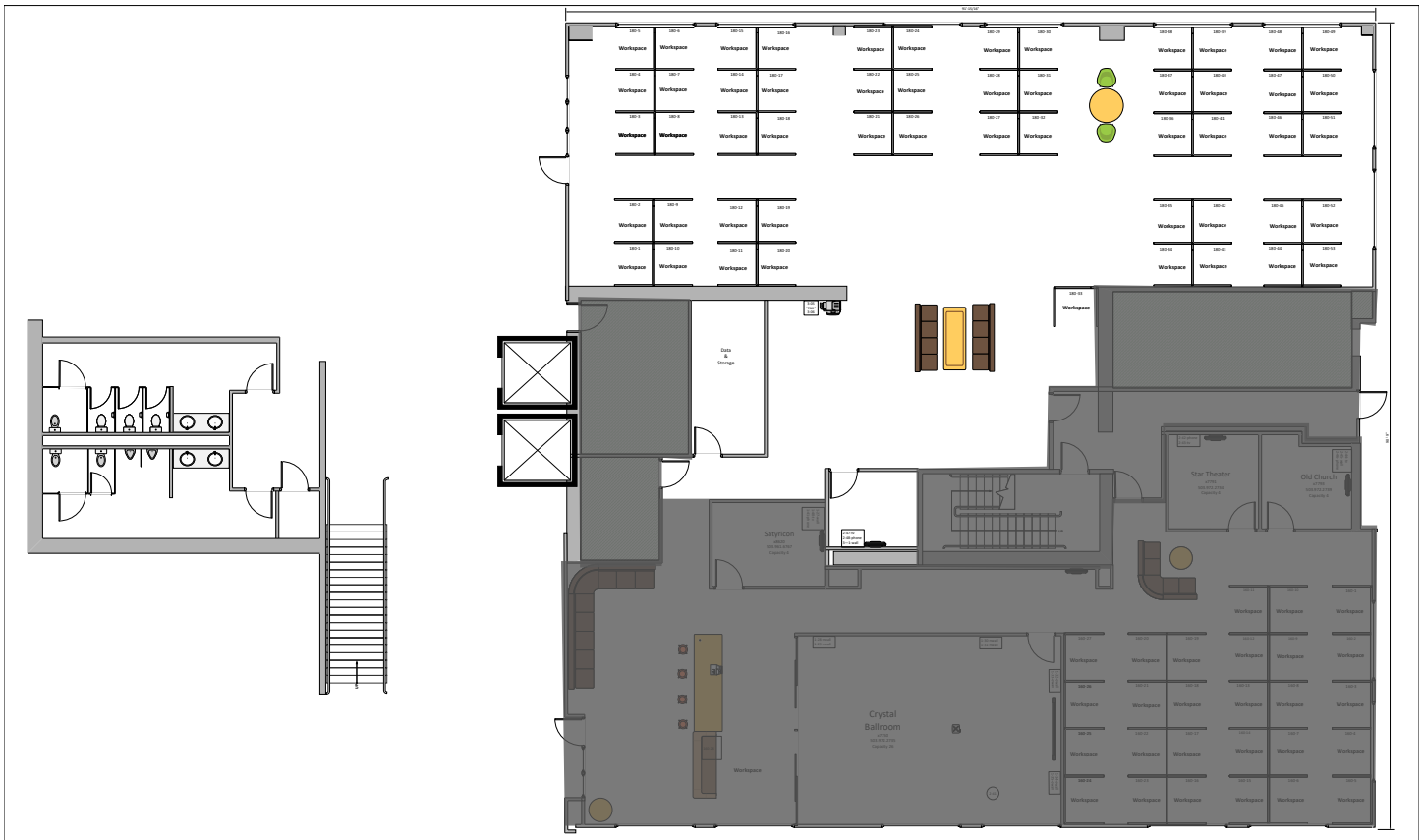


**Blake St. Onge**  
971.258.4631  
bstonge@cresa.com



**Summer Blasquez**  
503.334.0746  
sblasquez@cresa.com

# First Floor Plan: Suite 180



## Space Profile

- 53 Work Stations
- 2 Soft Seating Areas
- 1 Private Office
- Data/Storage Room

Collaboration Area



Huddle Room



## Cascade Station I

9600 NE Cascade Pkwy

Open Area



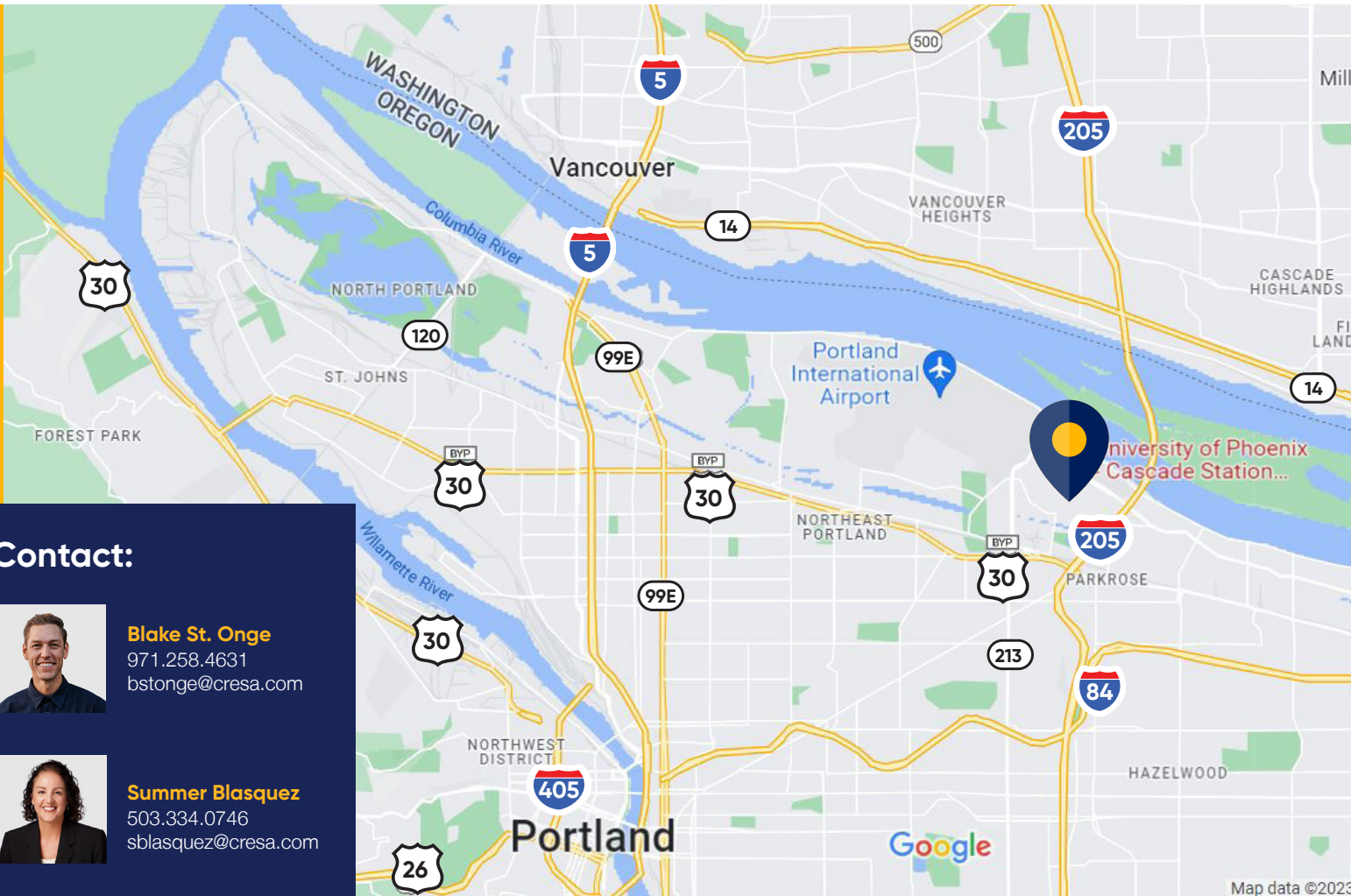
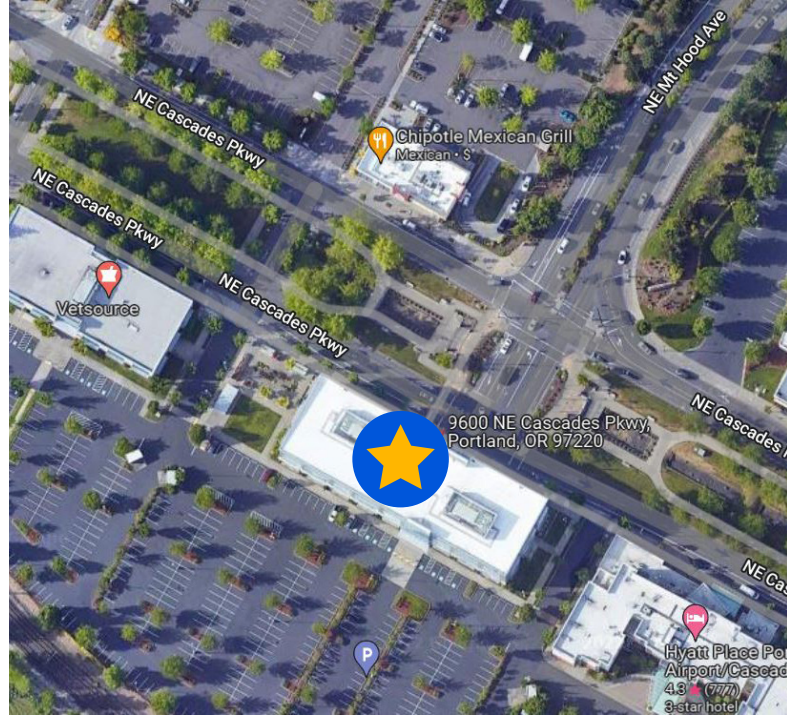
Work Stations



Kitchen



# Open Area



## Contact:



**Blake St. Onge**  
971.258.4631  
bstonge@cresa.com



**Summer Blasquez**  
503.334.0746  
sblasquez@cresa.com



Cresa © 2026. All rights reserved. The information contained in this document has been obtained from sources believed reliable. While Cresa does not doubt its accuracy, Cresa has not verified it and makes no guarantee, warranty, or representation about it. It is your responsibility to independently confirm its accuracy and completeness. Any projections, opinions, assumptions or estimates used are for example only and do not represent the current or future performance of the property. The value of this transaction to you depends on tax and other factors which should be evaluated by your tax, financial and legal advisors. You and your advisors should conduct a careful, independent investigation of the property to determine to your satisfaction the suitability of the property for your needs.