



PARTNERS

FOR SALE

2525 Nevada Ave N | Golden Valley, MN

- Approx 2,309 SF Total
- Approx 1,450 SF Office & 850 SF Warehouse
- Dock Door
- Two Dedicated Bathrooms
- Shower & Laundry
- Updated Office & Epoxy Warehouse Floor

- **Price: \$379,500**
- Tax: \$8,924.02
- Association: \$1,315.16 Quarterly
- Roof Reserve: \$1,324.16 Quarterly for 6 Years



Eric Riemer
Broker
Phone: 612-730-4631
eric@creminnesota.com

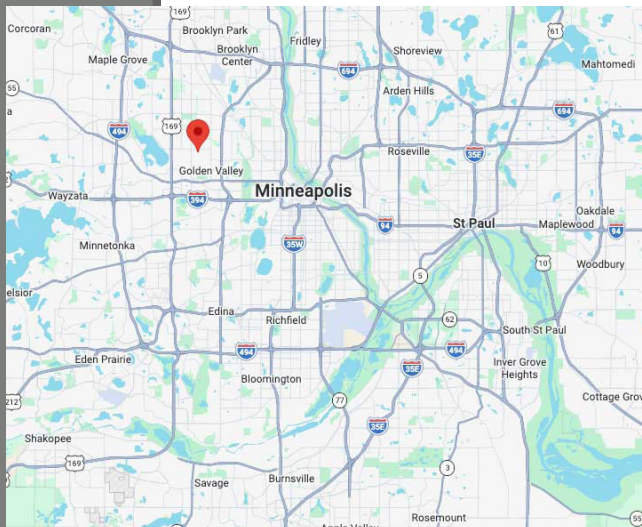
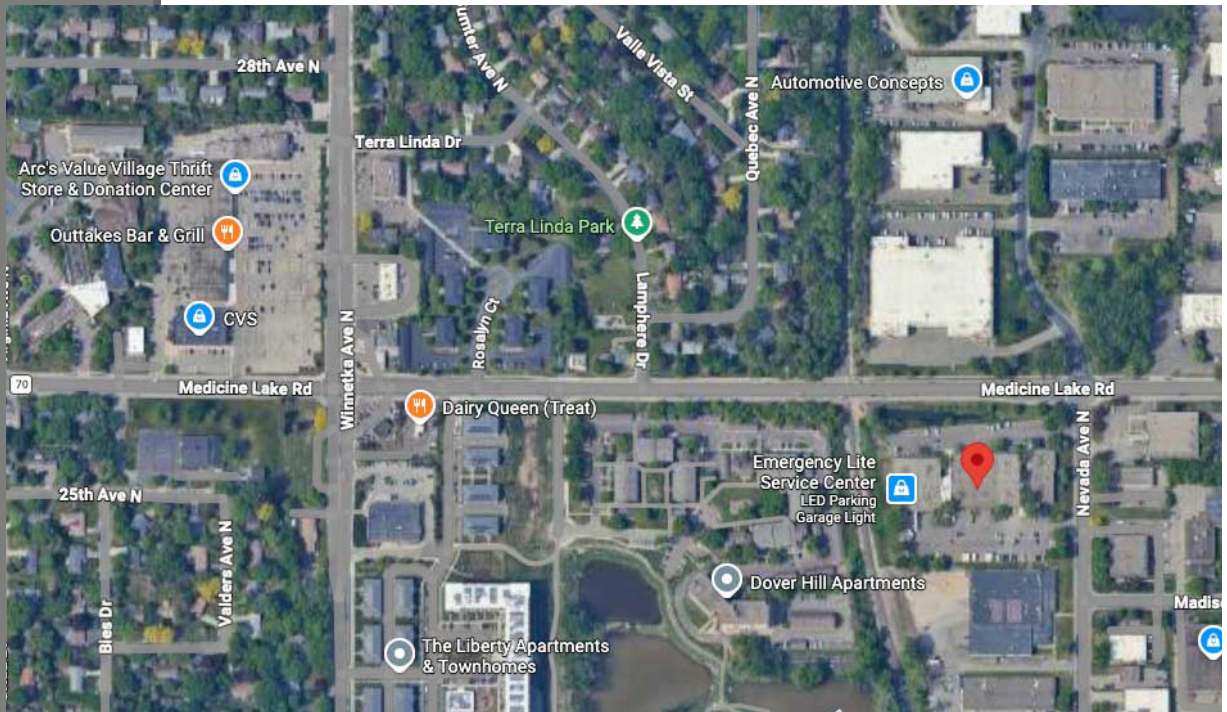
We obtained the information above from sources we believe to be reliable. However, we have not verified its accuracy and make no guarantee, warranty or representation about it. It is submitted subject to the possibility of errors, omissions, change of price, rental or other conditions, prior to sale, lease or financing, or withdrawal without notice. We include projections, opinions, as-sumptions or estimates for example only, and they may not represent current or future performance of the property. You and your tax and legal advisors should conduct your own investigation of the property.

CRE

PARTNERS

FOR SALE

2525 Nevada Ave N | Golden Valley, MN



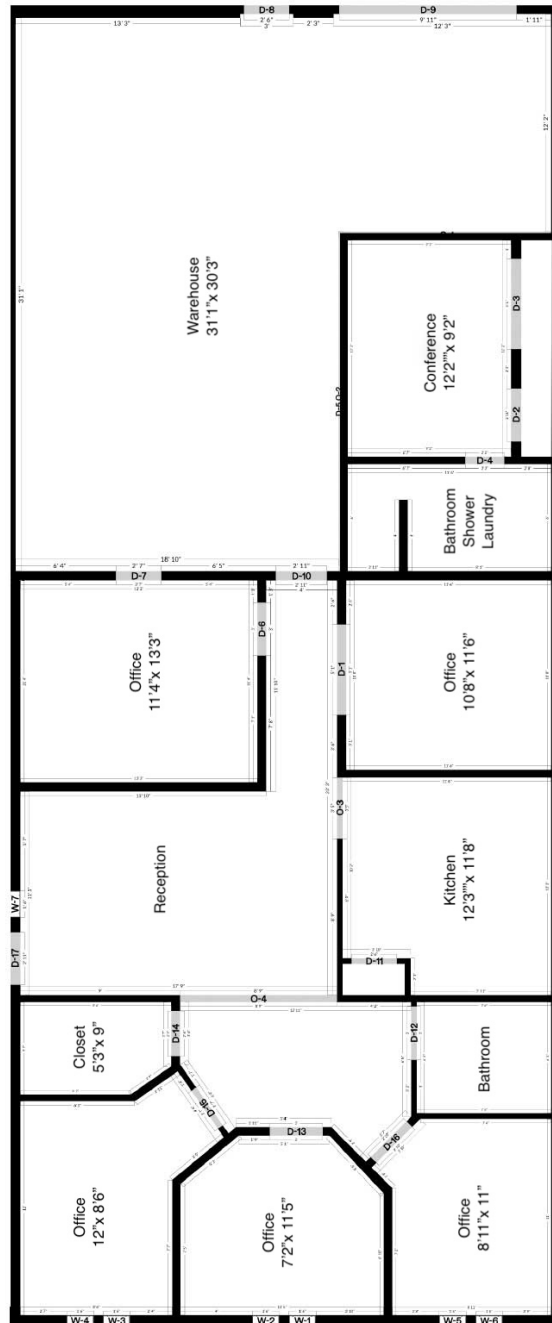
Eric Riemer
CRE Partners
Broker
612-730-4631
eric@creminnesota.com



PARTNERS

FLOOR PLAN

Suite 302





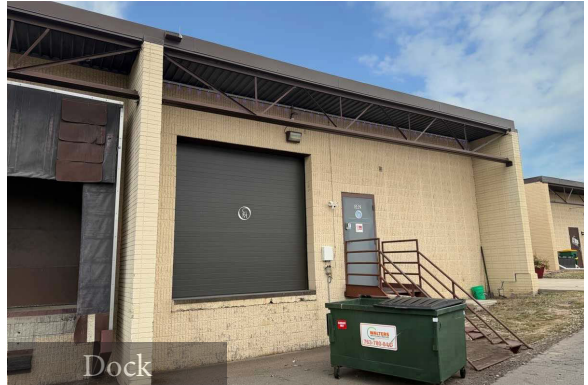
PROPERTY PHOTOS

PARTNERS

Website: [2525 Nevada Ave N. Golden Valley](http://2525NevadaAveN.com)



Night Lighting



Dock



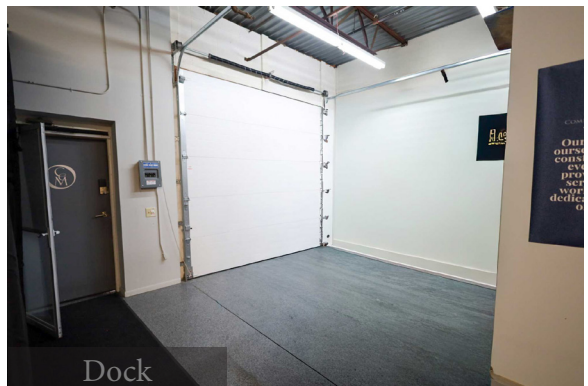
Reception



Breakroom



Warehouse



Dock