

15810 PARK TEN PLACE

HOUSTON, TEXAS 77084



OFFICE SPACE AVAILABLE



LEVEL

1

SUITE

197

AVAILABLE AREA

1,117 SF

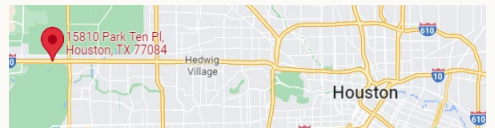
A DISTINCTIVE ADDRESS IN THE ENERGY CORRIDOR

Suite 197 is available at Broadfield at Park Ten. The property is strategically in the Energy Corridor between Sam Houston Parkway and the Grand Parkway, with convenient access to I-10, Highway 6, hotels, restaurants and everyday amenities.



LOCATION ACCESS

Convenient access to I-10, Highway 6, hotels and restaurants



LEASING CONTACTS

RYAN T. CROPPER

Director of Real Estate Services

713.800.0304

rcropper@missioncompanies.com

RYAN CLARK

Director of Acquisitions and Development

713.800.0297

rclark@missioncompanies.com

MISSION COMPANIES |
713.782.8550

14825 St. Mary's Ln, Suite 125
Houston, Texas 77079

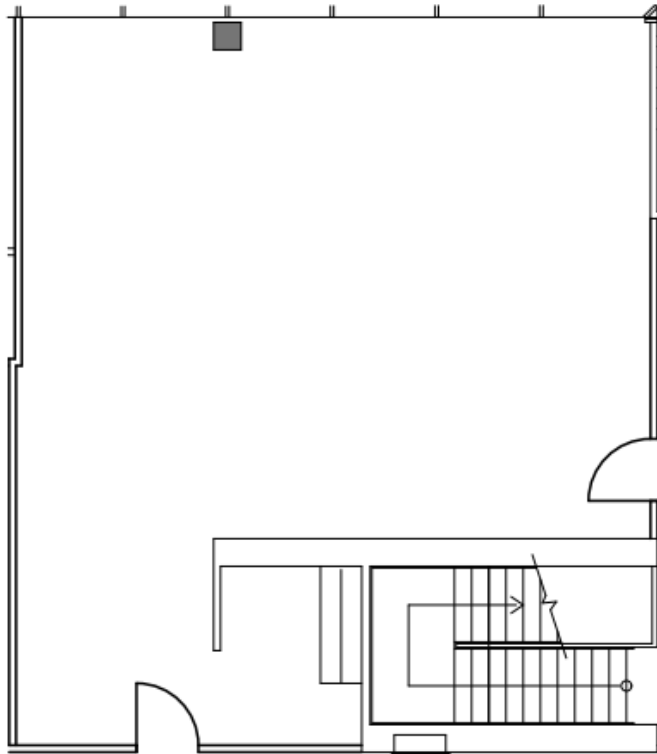
OFFICE SPACE AVAILABLE

LEVEL 1 / 1,117 SF

Suite 197

FLOOR PLAN

Suite 197 / Level 1



AVAILABLE AREA

1,117 SF

LEASING CONTACTS

RYAN T. CROPPER

Director of Real Estate Services

713.800.0304

rcropper@missioncompanies.com

RYAN CLARK

Director of Acquisitions and Development

713.800.0297

rclark@missioncompanies.com

MISSION COMPANIES |
713.782.8550

14825 St. Mary's Ln, Suite 125
Houston, Texas 77079