

Mt. Whitney Building

602 SE 11th Ave. Portland, OR 97214

FOR LEASE



Mt. Whitney is an 11,711 sq. ft. state-of-the-art facility designed for modern food businesses, featuring four fully equipped production kitchen suites. Each suite is approved by the Multnomah County Health Department and offers a true plug-and-play setup—ideal for catering operations, restaurant expansion, ghost kitchens, cloud kitchens, or large-scale production. The property also includes roll up doors, mezzanine levels for office or storage use, private restrooms, dedicated truck loading access, and on-site parking—delivering both efficiency and convenience in one turnkey space.

Matt Schweitzer
matt@northrimpdx.com | 503-525-1927



northrimpdx.com

819 SE Morrison Street, Ste 110, Portland OR 97214 | 503-525-1925

FOR LEASE

Mt. Whitney Building

602 SE 11th Ave. Portland, OR 97214



Property Details

- 4 Fully-equipped commercial production kitchens
- Roll up doors
- Mezzanine level for retail, office, or storage use
- Private ADA restroom and storage closet
- All equipment is professionally maintained
- Designated parking space and loading area
- Locally owned and professionally managed

Location Details

- Located in the heart of Portland's "Innovative Quadrant" with new businesses and restaurants throughout
- Easy access to downtown bridges, I-5 and I-84
- Close to multiple TriMet stops
- Locally owned and professionally managed

Matt Schweitzer

matt@northrimpx.com

503-525-1927



northrimpx.com

819 SE Morrison Street, Ste 110, Portland OR 97214 | 503-525-1925

Demographics & Traffic Count

- Population 23,053
- Average Household Income \$103,360
- Median Age 38.20
- Daily Traffic Count 5,000



tinyurl.com/WhitneyKitchen200



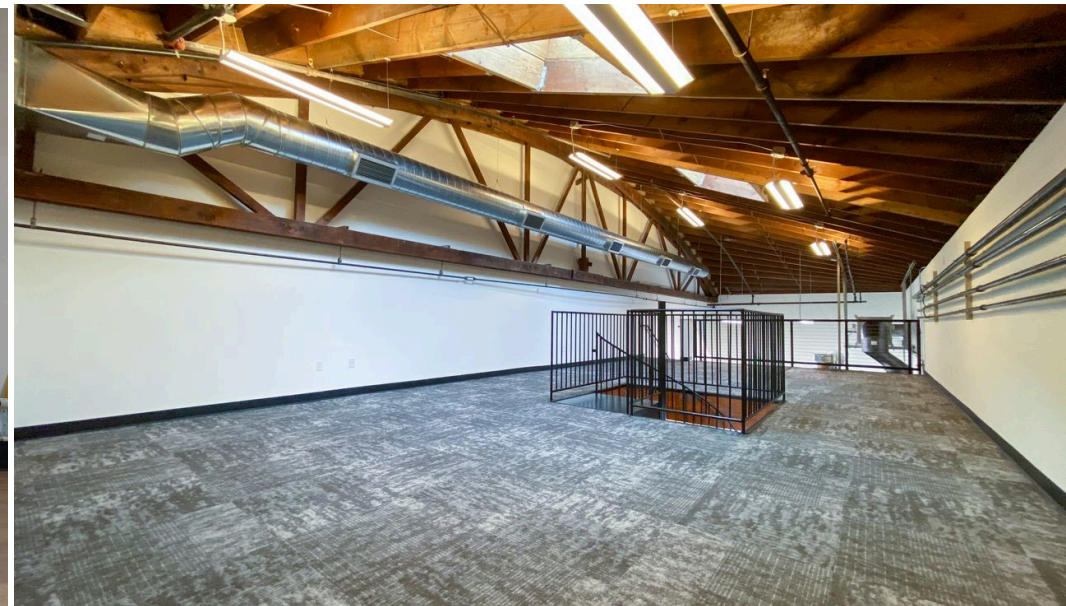
Mt. Whitney Building
Commercial Kitchens | Industrial | Flex

FOR LEASE

Matt Schweitzer
matt@northrimpdx.com | 503-525-1927



northrimpdx.com
819 SE Morrison Street, Ste 110, Portland OR 97214 | 503-525-1925



Mt. Whitney Building

Commercial Kitchens | Industrial | Flex

FOR LEASE

Matt Schweitzer
matt@northrimpx.com | 503-525-1927



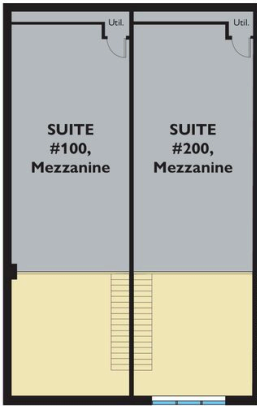
northrimpx.com
819 SE Morrison Street, Ste 110, Portland OR 97214 | 503-525-1925

The information contained in this package has been obtained from sources we believe to be reliable. While we do not doubt its accuracy, we have not verified it and make no guarantee, warranty or representation about it. It is your sole responsibility to independently confirm its accuracy and completeness. Any projections, opinions, assumptions or estimates used are for example only and do not represent the current or future performance of the property. ©2026 North Rim Commercial Properties

FLOOR PLAN



FIRST FLOOR



SECOND FLOOR

Mt. Whitney Building
Commercial Kitchens | Industrial | Flex

FOR LEASE

Matt Schweitzer
matt@northrimpdx.com | 503-525-1927



northrimpdx.com
819 SE Morrison Street, Ste 110, Portland OR 97214 | 503-525-1925

The information contained in this package has been obtained from sources we believe to be reliable. While we do not doubt its accuracy, we have not verified it and make no guarantee, warranty or representation about it. It is your sole responsibility to independently confirm its accuracy and completeness. Any projections, opinions, assumptions or estimates used are for example only and do not represent the current or future performance of the property. ©2026 North Rim Commercial Properties



Mt. Whitney Building
602 SE 11th Avenue, Portland, OR 97214

FOR LEASE

Matt Schweitzer
matt@northrimpx.com | 503-525-1927



northrimpx.com
819 SE Morrison Street, Ste 110, Portland OR 97214 | 503-525-1925