

# New Ownership Medical Office Space

891 - 4,450 SF  
Office or Medical  
Office Space

**7600 College Drive**  
Palos Heights, Illinois 60463

## PROPERTY HIGHLIGHTS

- 891 - 4,450 SF Available
- Covered drop-off entrance
- Whole building back-up generator
- Two elevators to best accommodate tenants and their clientele
- Free common waiting area which means tenants save on in-suite square footage
- New ownership
- Parking: 240 Surface spaces | 5.9/1,000 SF
- Located 1 mile from Northwestern Medicine Palos Hospital



[Property Website](#)

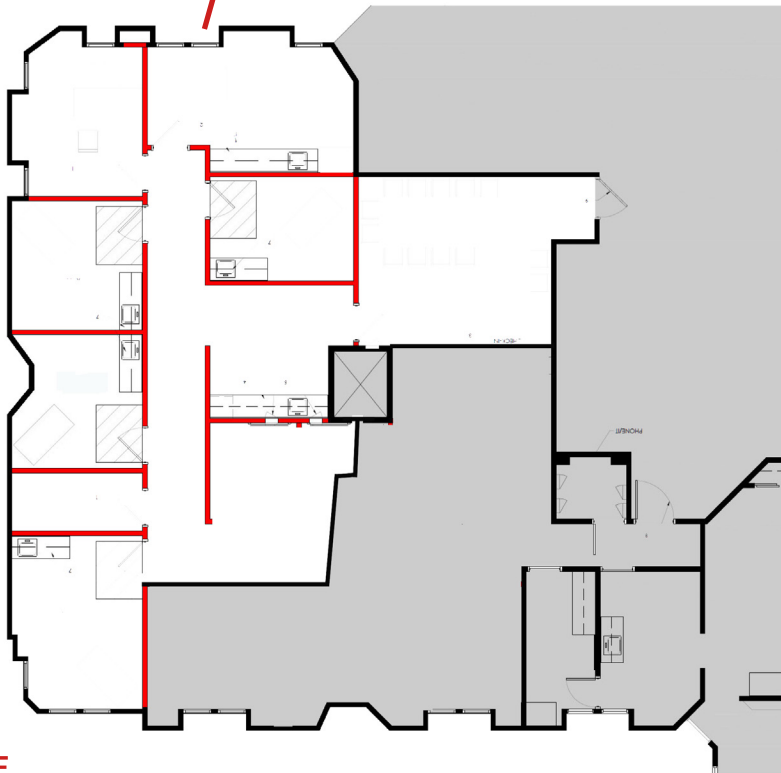
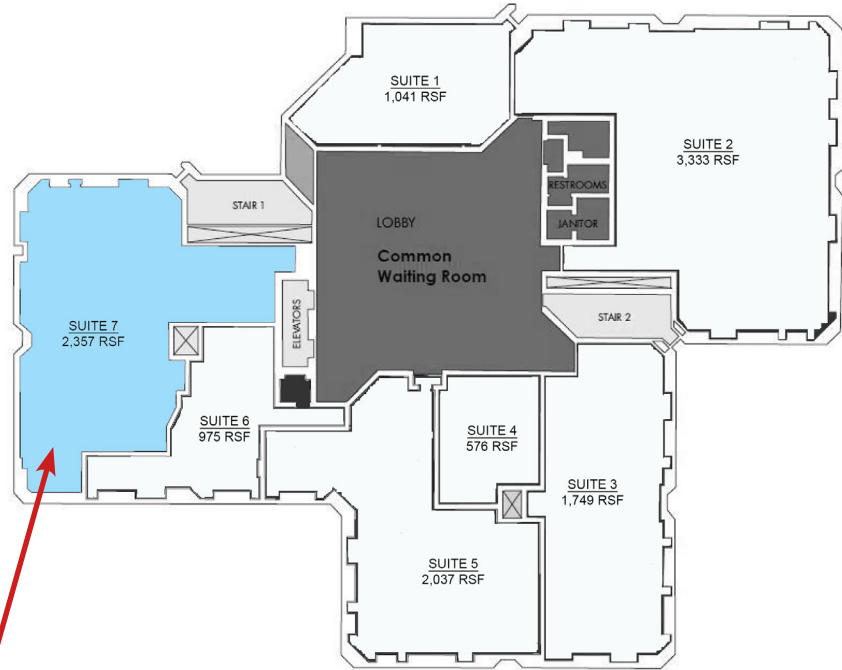
## Contact

Perry Higa  
+1 630 235 2980  
phiga@hiffman.com

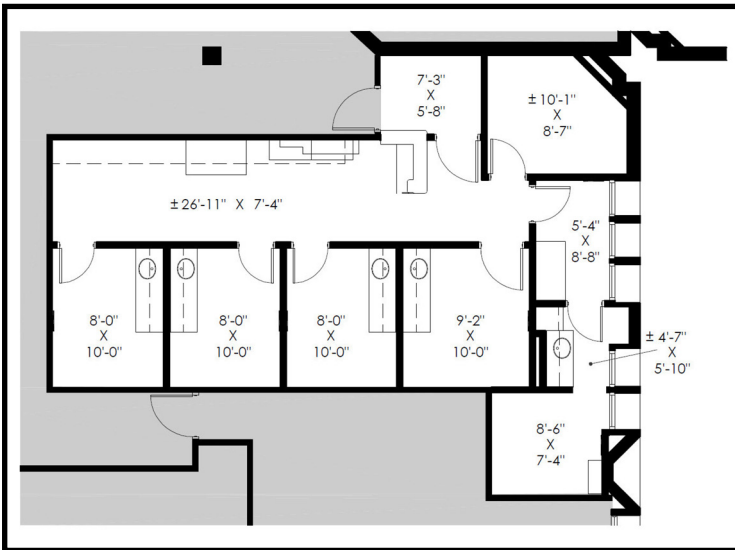
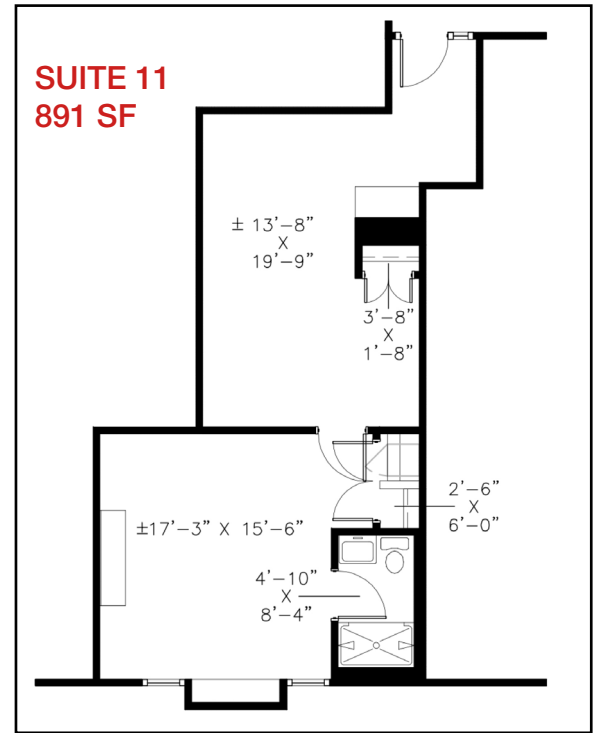
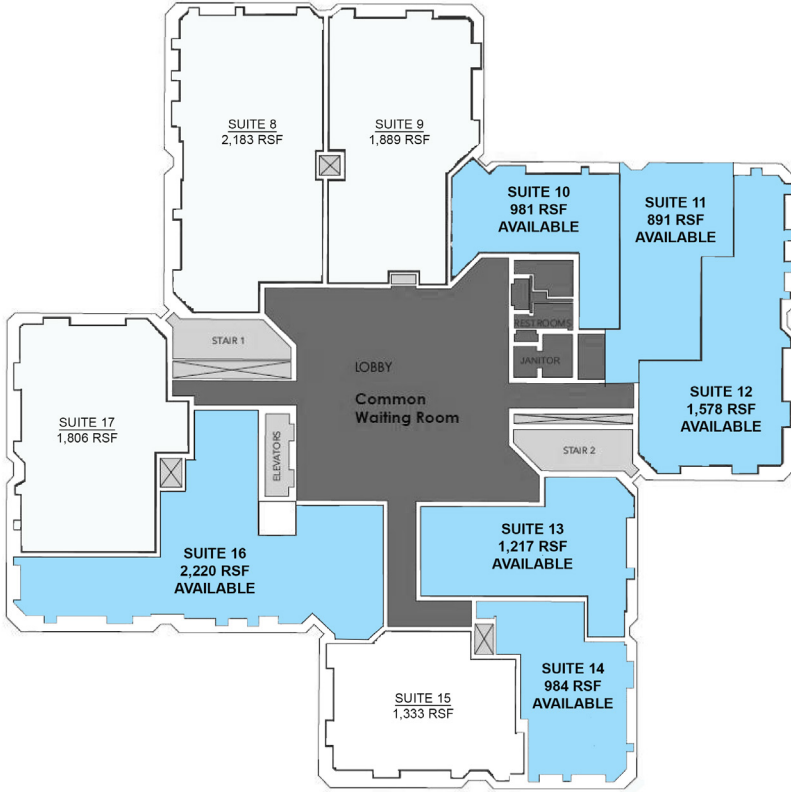
Connor Dale  
+1 630 709 2785  
cdale@hiffman.com

Michael Spano  
+1 630 389 8936  
mspano@hiffman.com

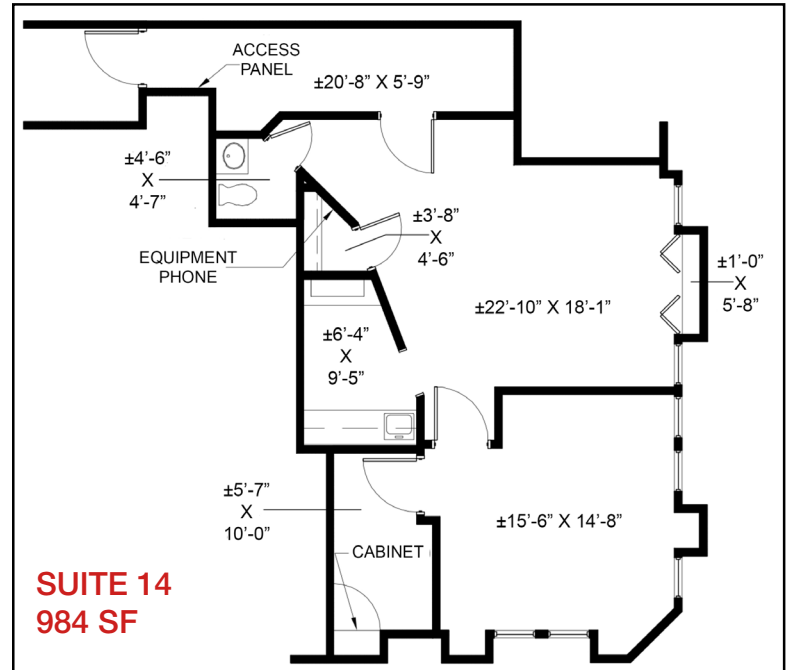
One Oakbrook Terrace  
Suite 600  
Oakbrook Terrace, Illinois 60181  
+1 630 932 1234



**SUITE 7**  
**2,357 SF**



**SUITE 13**  
1,217 SF



**SUITE 14**  
984 SF

