



OFFICE SUITES IN SHENANDOAH PROFESSIONAL PLAZA

5917 JONES CREEK RD BATON ROUGE, LA 70817



OFFERED: ~~FOR LEASE~~

LEASE RATE: \$1,395.33 PER MONTH

728 SF

- Brand new paint, flooring, and lighting
- Pylon signage opportunity
- Ample parking in front and rear of building
- Full Service lease type

CONTACT:

LINDSAY REDHEAD, MBA
800.895.9329

800.895.9329 | <https://elifinrealty.com> | May 2026
640 Main St, Suite A, Baton Rouge, LA 70801

Broker of Record, Mathew Laborde; Licensed by the Louisiana, Mississippi, and Ohio Real Estate Commissions. This information has been secured from sources we believe to be reliable, but we make no representations or warranties, expressed or implied, as to the accuracy of the information. References to square footage or age are approximate. Interested parties must verify the information and bears all risk for any inaccuracies.

OFFERING SUMMARY



PROPERTY SUMMARY

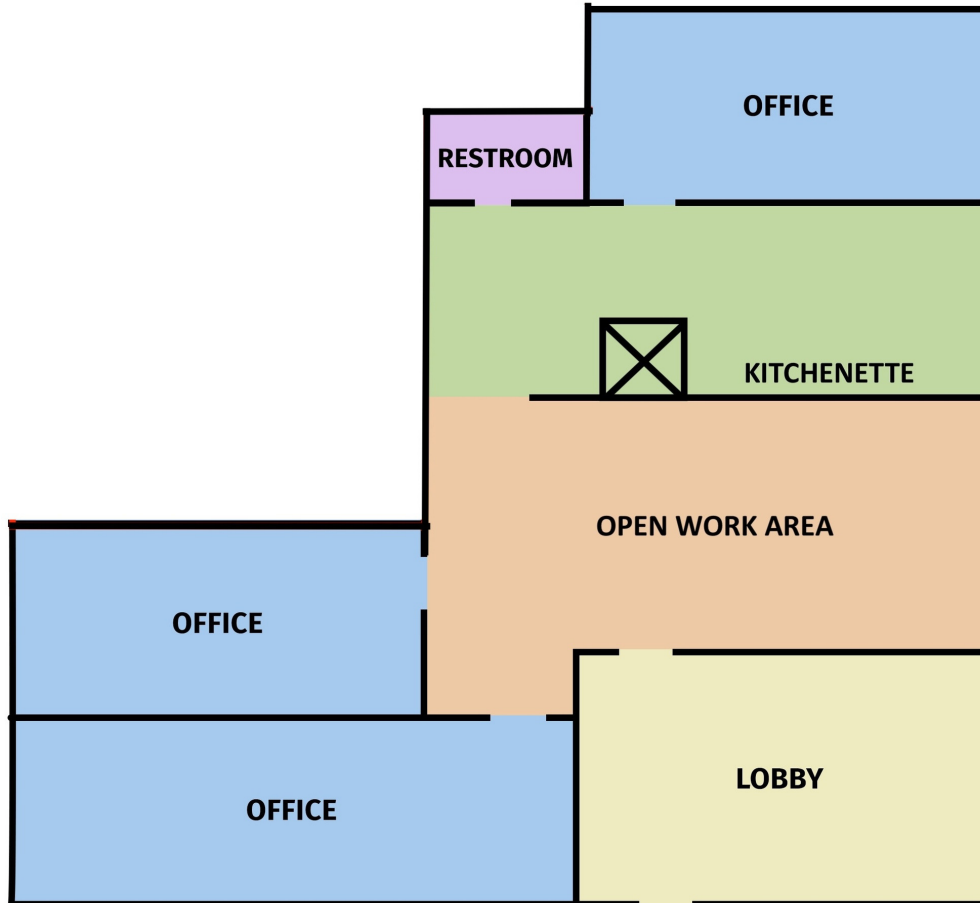
- Recently renovated, this office plaza comes equipped with brand-new paint, flooring, and lighting in all suites.
- The plaza features a highly-visible pylon signage opportunity – place your logo in front of the ±16,348 daily traffic.
- First-floor suite with separate exterior entrance. Large lobby/reception, 3 offices, private restroom, breakroom, and storage closet.
- There is ample parking in the front and rear of the building.
- Full Service lease type.

CONTACT:

LINDSAY REDHEAD, MBA
800.895.9329

LEASE SPACES

SUITE 100B



AVAILABLE SPACES

SUITE	TENANT	SIZE (SF)	LEASE TYPE	LEASE RATE
Suite 100B	Available	728 SF	Full Service	\$1,395 per month

CONTACT:
LINDSAY REDHEAD, MBA
 800.895.9329

800.895.9329 | <https://elifinrealty.com> | May 2026
 640 Main St, Suite A, Baton Rouge, LA 70801
 Broker of Record, Mathew Laborde; Licensed by the Louisiana, Mississippi, and Ohio Real Estate Commissions. This information has been secured from sources we believe to be reliable, but we make no representations or warranties, expressed or implied, as to the accuracy of the information. References to square footage or age are approximate. Interested parties must verify the information and bears all risk for any inaccuracies.

INTERIOR PHOTOS



CONTACT:
LINDSAY REDHEAD, MBA
800.895.9329

800.895.9329 | <https://elifinrealty.com> | May 2026
640 Main St, Suite A, Baton Rouge, LA 70801
Broker of Record, Mathew Laborde; Licensed by the Louisiana, Mississippi, and Ohio Real Estate Commissions. This information has been secured from sources we believe to be reliable, but we make no representations or warranties, expressed or implied, as to the accuracy of the information. References to square footage or age are approximate. Interested parties must verify the information and bears all risk for any inaccuracies.

AERIAL PHOTOS



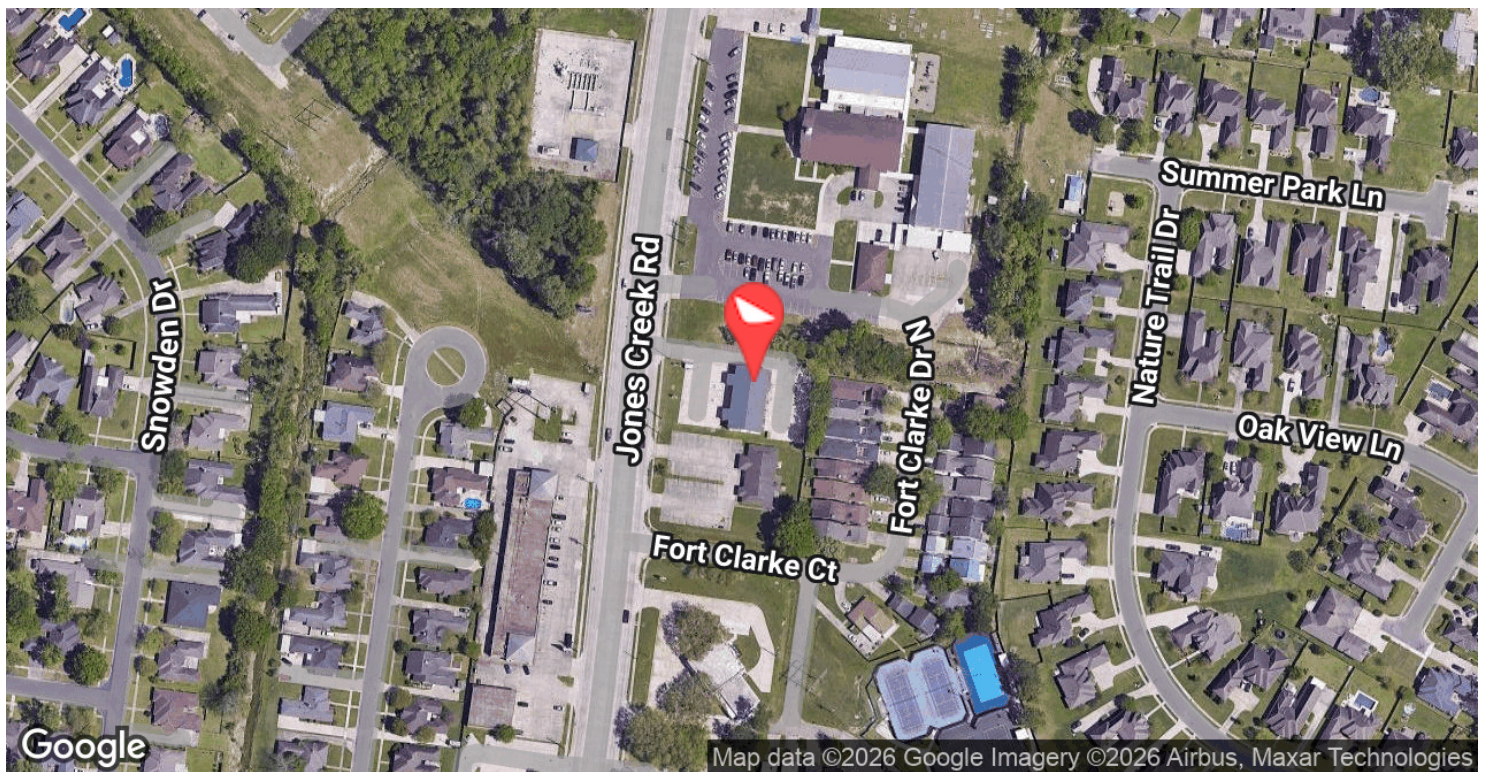
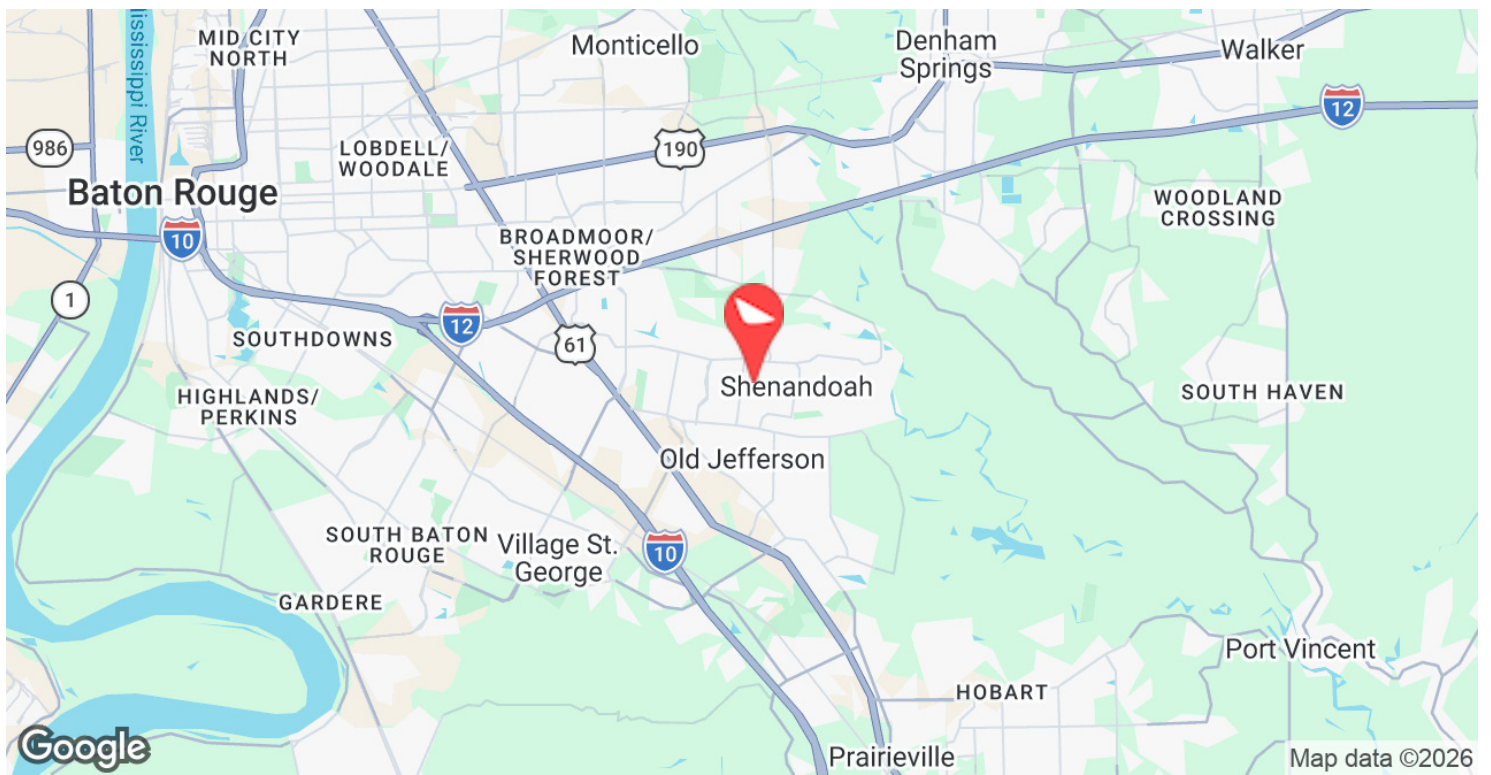
CONTACT:

LINDSAY REDHEAD, MBA
800.895.9329

800.895.9329 | <https://elifinrealty.com> | May 2026
640 Main St, Suite A, Baton Rouge, LA 70801

Broker of Record, Mathew Laborde; Licensed by the Louisiana, Mississippi, and Ohio Real Estate Commissions. This information has been secured from sources we believe to be reliable, but we make no representations or warranties, expressed or implied, as to the accuracy of the information. References to square footage or age are approximate. Interested parties must verify the information and bears all risk for any inaccuracies.

LOCATION MAP



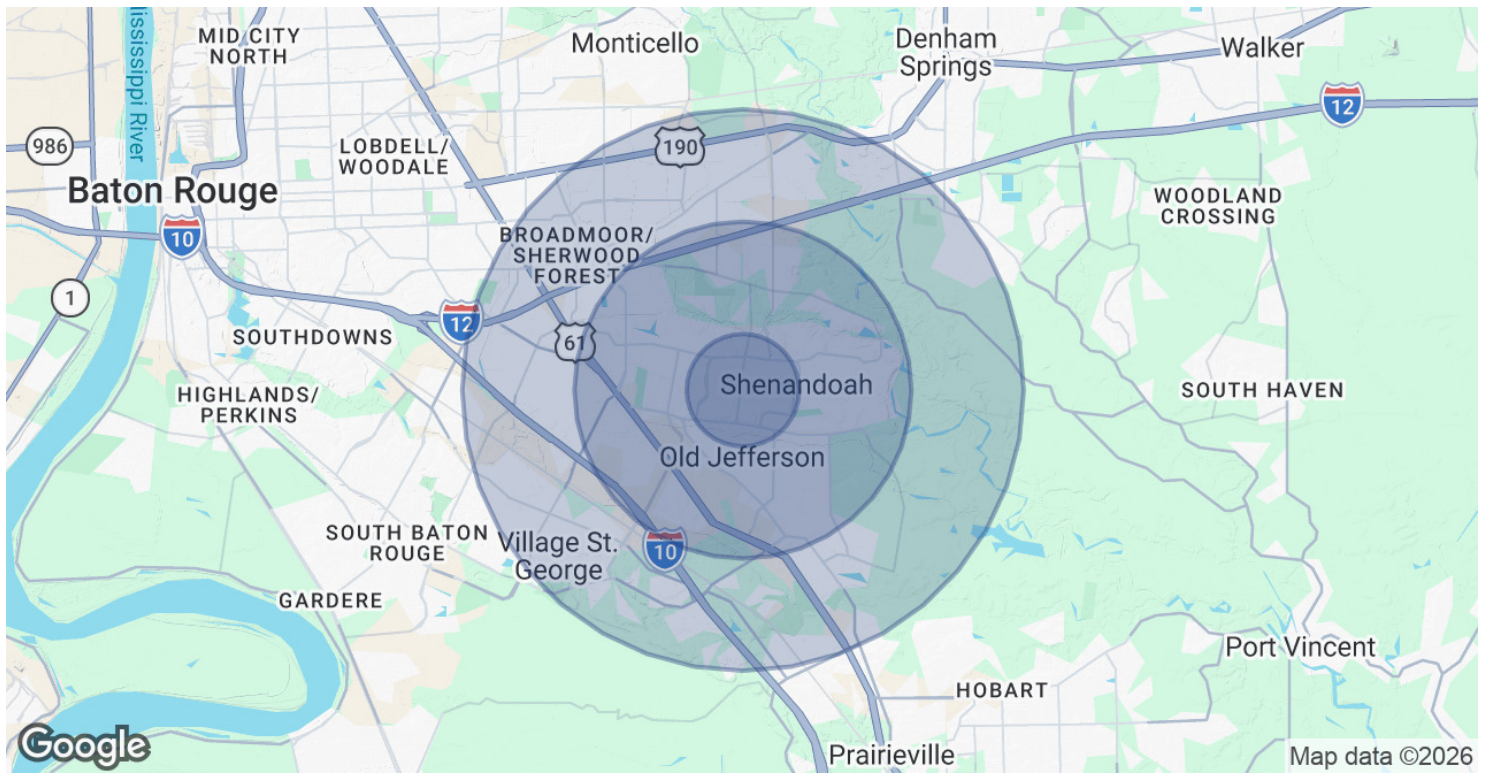
CONTACT:

LINDSAY REDHEAD, MBA
800.895.9329

800.895.9329 | <https://elifinrealty.com> | May 2026
640 Main St, Suite A, Baton Rouge, LA 70801

Broker of Record, Mathew Laborde; Licensed by the Louisiana, Mississippi, and Ohio Real Estate Commissions. This information has been secured from sources we believe to be reliable, but we make no representations or warranties, expressed or implied, as to the accuracy of the information. References to square footage or age are approximate. Interested parties must verify the information and bears all risk for any inaccuracies.

DEMOGRAPHICS MAP & REPORT



POPULATION	1 MILE	3 MILES	5 MILES
Total Population	12,033	61,732	142,510
Average Age	38.6	38.0	37.7
Average Age (Male)	37.2	34.7	35.9
Average Age (Female)	38.4	39.1	38.9

HOUSEHOLDS & INCOME	1 MILE	3 MILES	5 MILES
Total Households	4,420	26,099	61,046
# of Persons per HH	2.7	2.4	2.3
Average HH Income	\$97,396	\$88,710	\$85,745
Average House Value	\$230,722	\$230,294	\$226,908

2020 American Community Survey (ACS)

CONTACT:
LINDSAY REDHEAD, MBA
 800.895.9329

800.895.9329 | <https://elifinrealty.com> | May 2026
 640 Main St, Suite A, Baton Rouge, LA 70801
 Broker of Record, Mathew Laborde; Licensed by the Louisiana, Mississippi, and Ohio Real Estate Commissions. This information has been secured from sources we believe to be reliable, but we make no representations or warranties, expressed or implied, as to the accuracy of the information. References to square footage or age are approximate. Interested parties must verify the information and bears all risk for any inaccuracies.