

# 1819 TURNING BASIN DRIVE, SUITE 918

HOUSTON, TX 77029

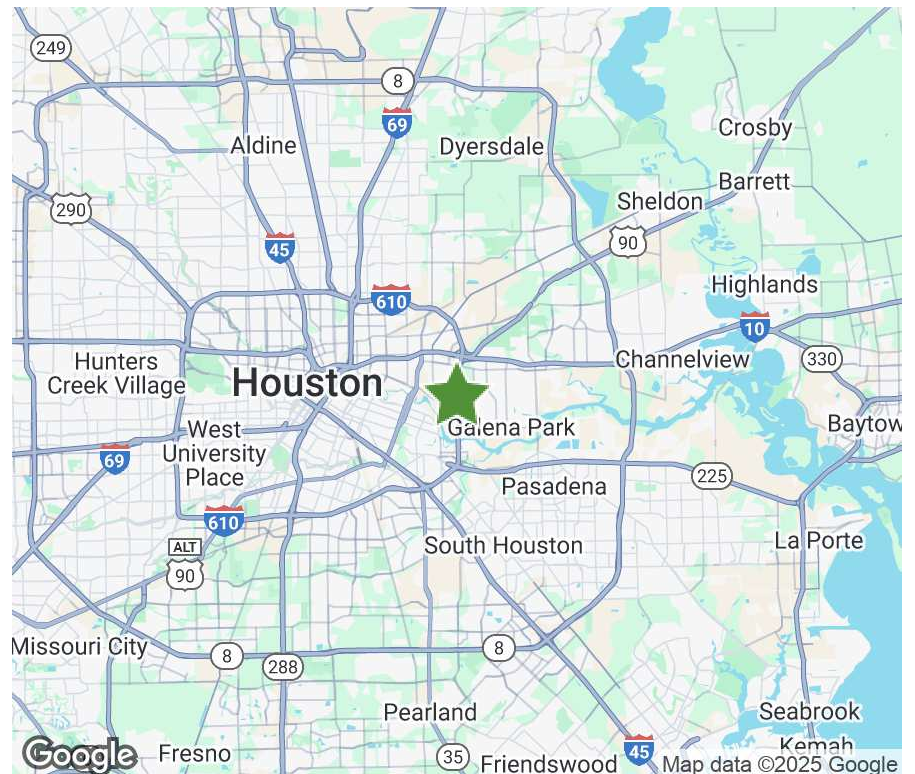


**27,754 SF | FOR LEASE**

The property 1819 Turning Basin Drive is an ideal industrial facility for distribution users in Houston's Southeast submarket. Located just off the 610 Loop, two miles south of I-10, this dock high front load building offers quick and convenient access to the Port of Houston.

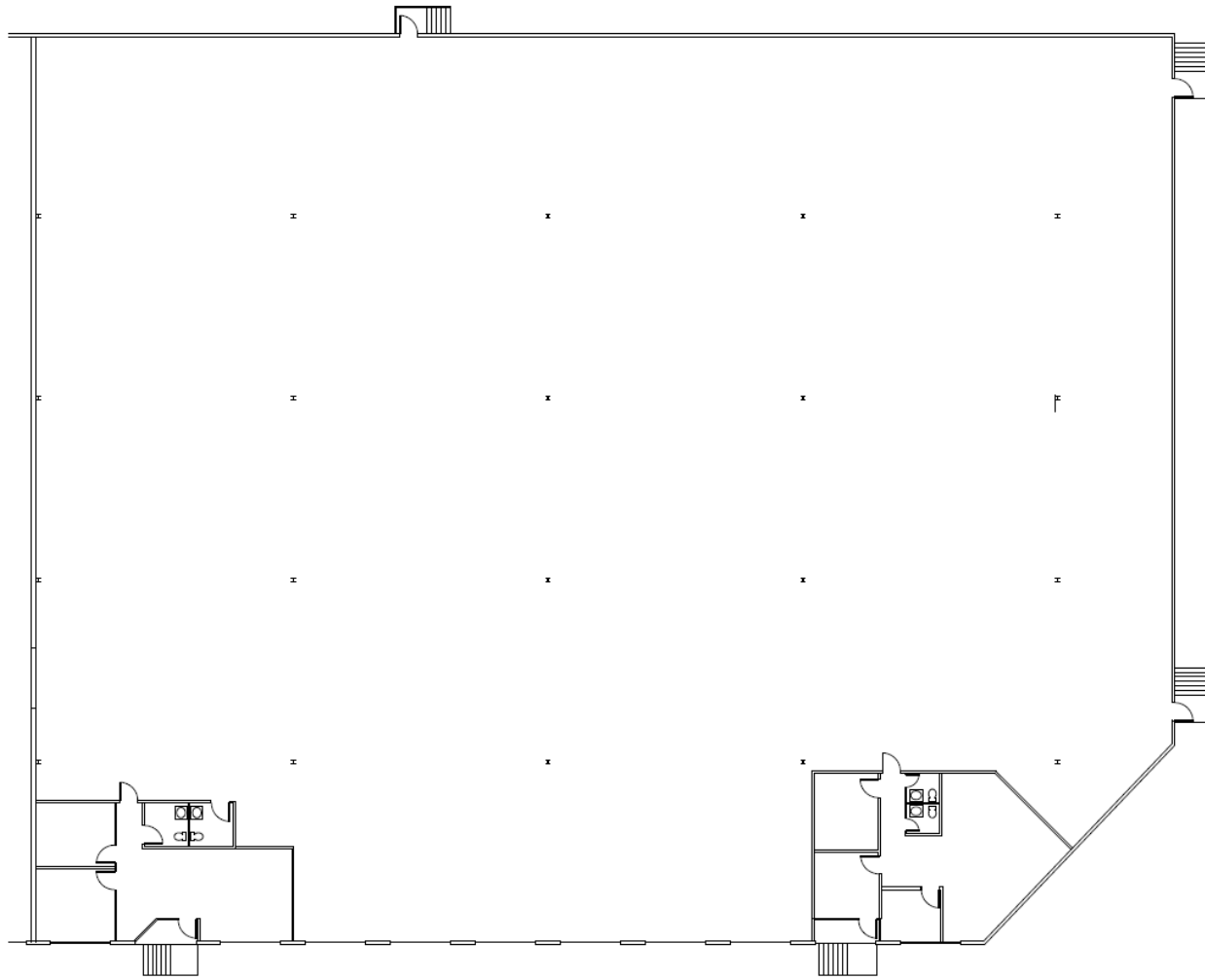
## PROPERTY SPECIFICATIONS

<b>Available Space:</b>	12,637 - 27,754 SF
<b>Available Office:</b>	2,025 SF
<b>Total Building Size:</b>	65,494 SF
<b>Submarket:</b>	Southeast Houston
<b>Clear Height:</b>	18
<b>Dock High Doors:</b>	6
<b>Ramps:</b>	1
<b>Sprinkler:</b>	NonESFR



# 1819 TURNING BASIN DRIVE, SUITE 918

12,637 - 27,754 SF | FOR LEASE



## BROKER CONTACT

### David Munson, SIOR

Cushman & Wakefield  
713.913.5473  
david.munson@cushwake.com

### Garrett Thomas

Cushman & Wakefield  
713.260.0244  
garrett.thomas@cushwake.com

## OWNER CONTACT

### Jake Allen

Regional Manager  
312.344.4331  
jallen@FIRT.com

