

— CLICK TO VIEW LOOPNET LISTING —



LA CHOLLA MEDICAL PLAZA BUILDINGS I & II

 **TRANSWESTERN**

FOR LEASE: 6130 N La Cholla Blvd, Tucson, AZ 85741

PROPERTY OVERVIEW

TOTAL SF	±67,731 SF
AVAILABLE SF	±1,002 - 4,848 SF
LEASE RATE	\$23.00/SF NNN
YEAR BUILT	2002
STORIES	2 Stories Per Building
PARKING	5.0/1,000 SF Surface with covered reserved available
OCCUPANCY	80.3% (1/1/2025)
ZONING	SP

PROPERTY HIGHLIGHTS



Tremendous visibility from North La Cholla Boulevard & less than 5 minutes to I-10



Campus adjacent to Northwest Medical Center



Strong tenant mix with 42.6% leased to the hospital system



Amenities such as Costco Wholesale and Topgolf nearby



DEMOGRAPHICS

1 MILE

2024 POPULATION	8,732
2029 POPULATION	9,057
2024 HOUSEHOLDS	3,417
ANNUAL GROWTH 2024-2029	0.9%
AVG HH INCOME	\$86,960

3 MILES

2024 POPULATION	67,918
2029 POPULATION	70,059
2024 HOUSEHOLDS	29,163
ANNUAL GROWTH 2024-2029	0.6%
AVG HH INCOME	\$79,648

5 MILES

2024 POPULATION	168,947
2029 POPULATION	175,033
2024 HOUSEHOLDS	73,457
ANNUAL GROWTH 2024-2029	0.7%
AVG HH INCOME	\$81,393



Walmart AMC THEATRES
BARNES & NOBLE BOOKSELLERS Gentle Dental

LA FITNESS ROSATTI'S

TOPGOLF COSTCO WHOLESALE

NORTHWEST HEALTHCARE
NORTHWEST DRIVALLEY SAHARITA HOUGHTON

Bashas' SAJAD GO
MCDONALD'S DAIRY QUEEN BURGER KING

SPORTING CHANCE CENTER
TUCSON ARIZONA



LOCATION OVERVIEW

La Cholla Medical Plaza



 **ORO VALLEY HOSPITAL**

103 MILES
to Phoenix Sky Harbor

11 MILES
to Oro Valley Hospital

 **NORTHWEST HEALTHCARE**
NORTHWEST ORO VALLEY · SAHARITA · DOWNTOWN

9 MILES
to Downtown Tucson





AVAILABILITY | \$23.00 NNN

SUITE A-117	±3,245 SF
SUITE A-260	±2,567 SF
SUITE A-270	±4,040 SF

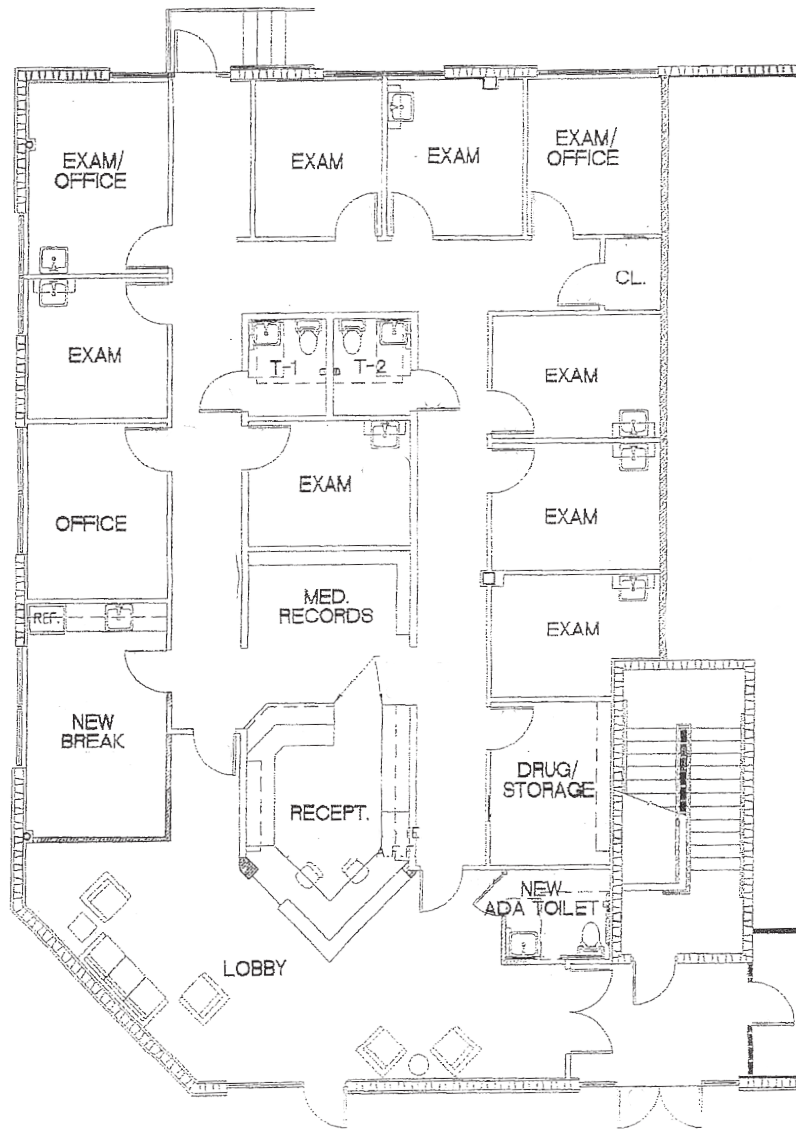
SUITE B-110	±4,848 SF
SUITE B-220	±1,002 SF
SUITE B-225	±1,712 SF



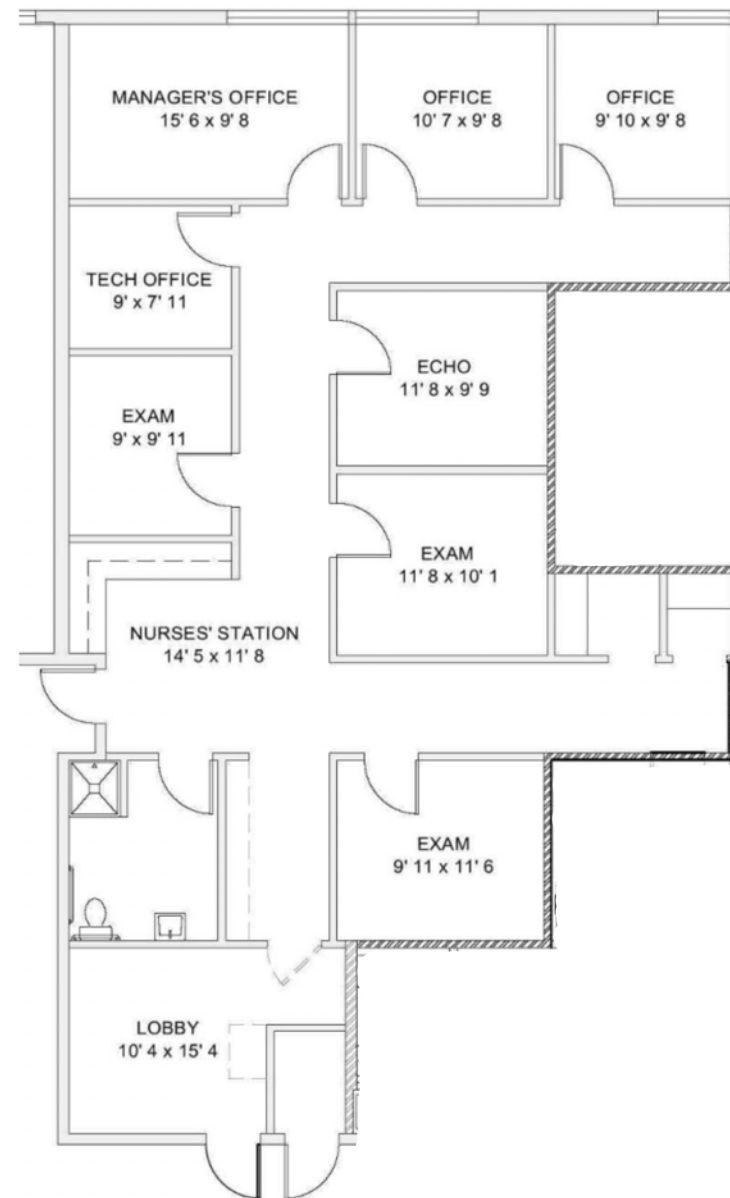
FLOOR PLANS

La Cholla Medical Plaza

A-117 | ±3,245 SF



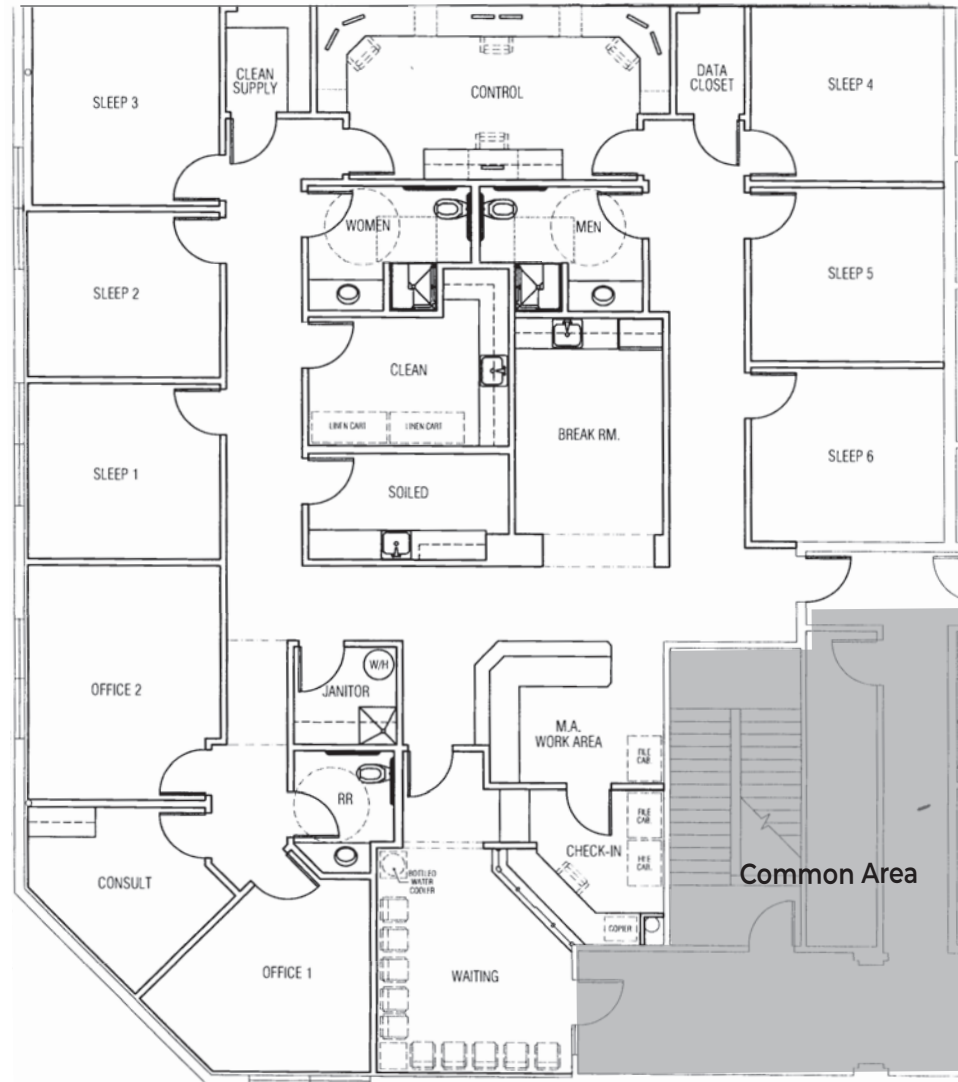
A-260 | ±2,567 SF



FLOOR PLANS

La Cholla Medical Plaza

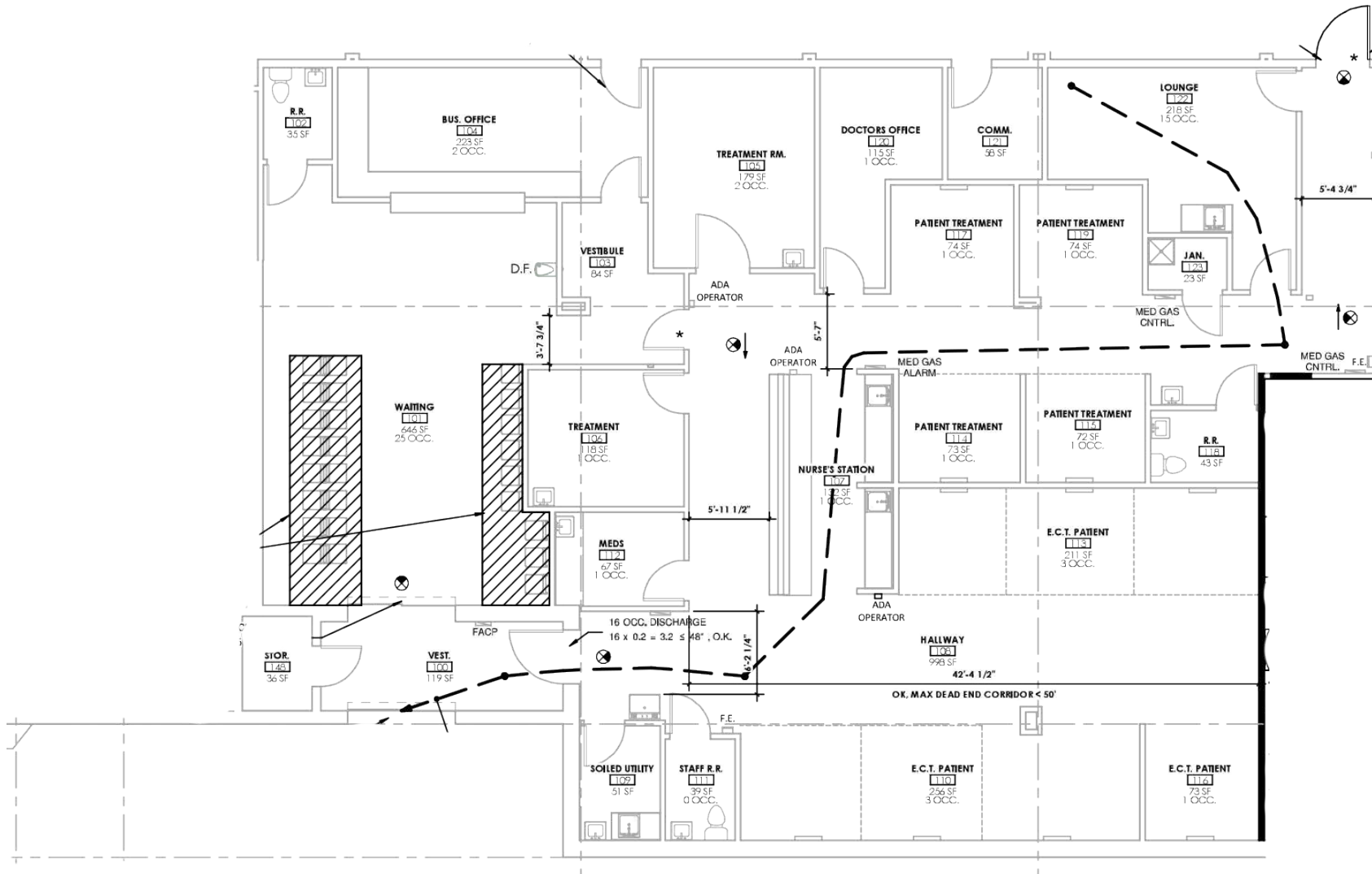
A-270 | ±4,040 SF



FLOOR PLANS

La Cholla Medical Plaza

B-110 | 4,848 SF



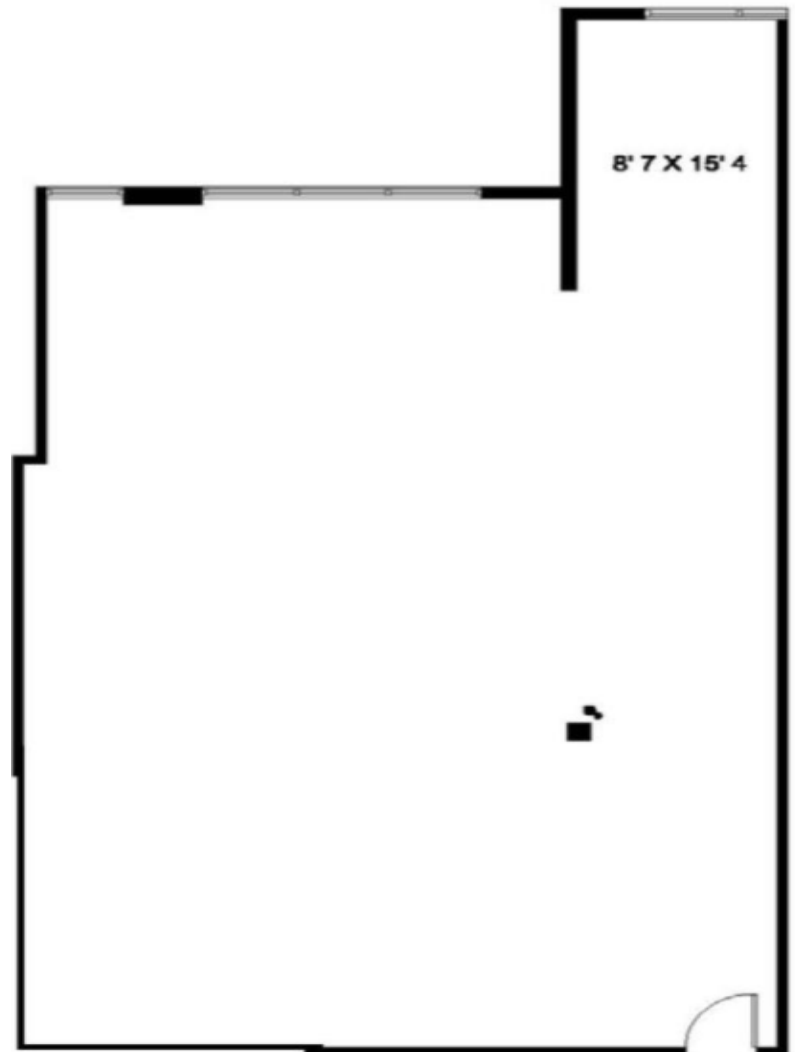
FLOOR PLANS

La Cholla Medical Plaza

B-220 | 1,002 SF
Shell

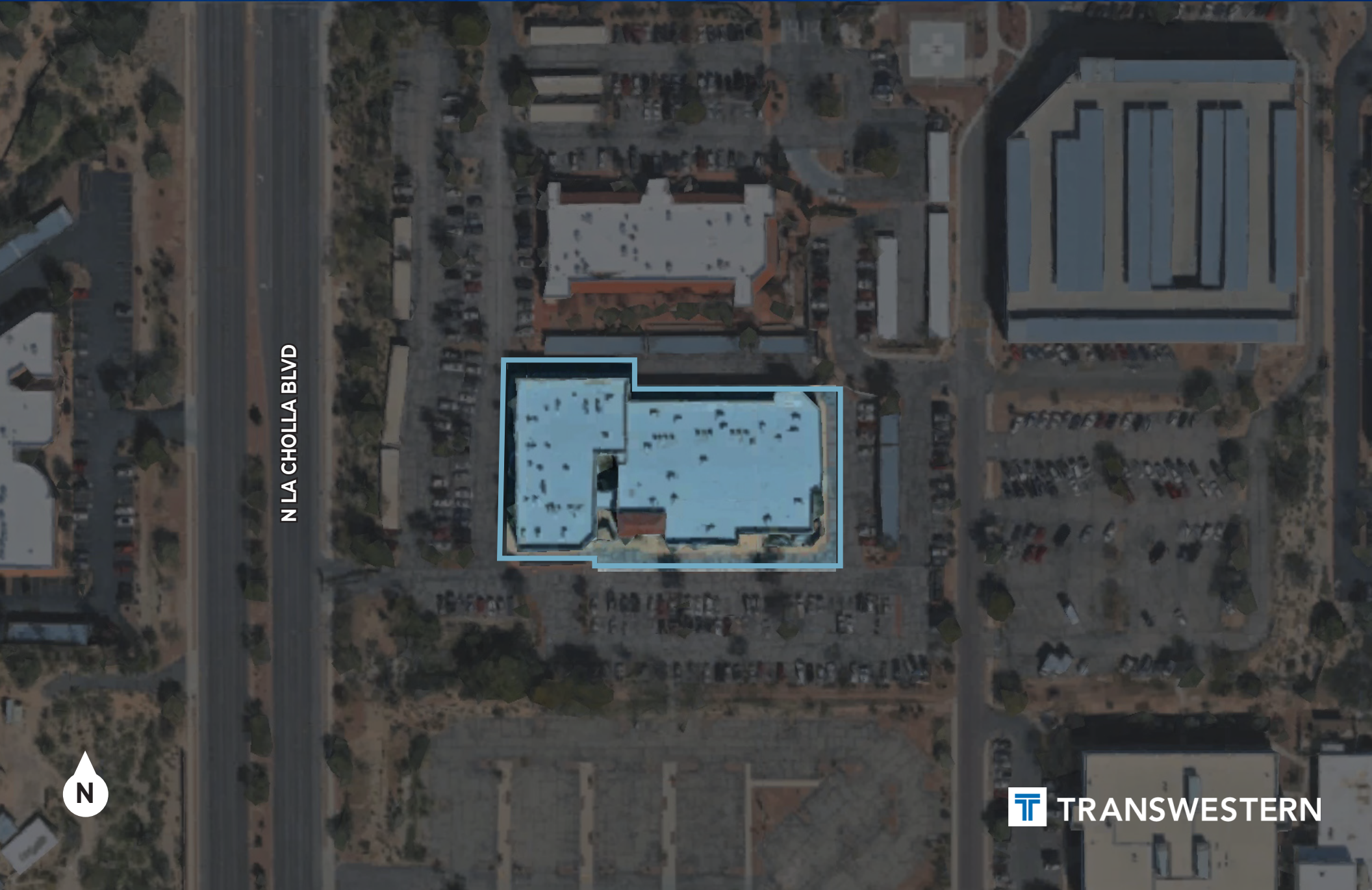


B-225 | ±1,712 SF
Shell



SITE PLAN

La Cholla Medical Plaza



N LA CHOLLA BLVD



TUCSON OVERVIEW



554,013

Total Population



\$58,160

Median HH Income



63,000+

Student Population



\$397,131

Average Home Value

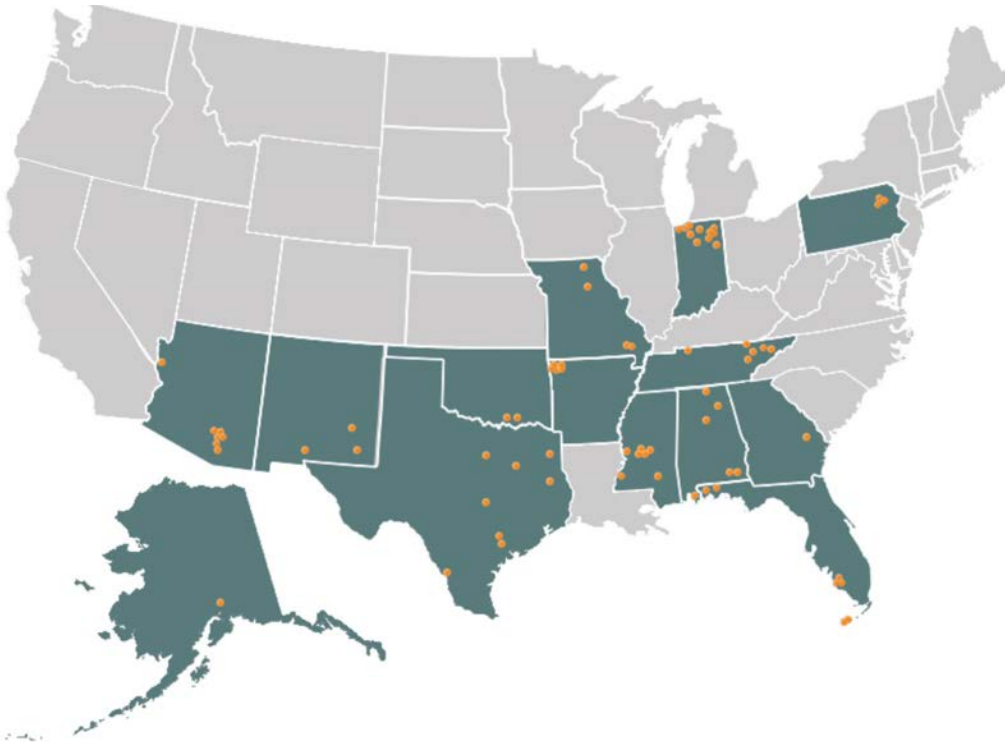
Situated approximately 116 miles south of Phoenix, Tucson ranks as Arizona's second-largest city, boasting a population exceeding half a million. Renowned for its sunny weather, breathtaking desert scenery, and vibrant cultural scene, Tucson also thrives as a center for arts and music. Its proximity to the Mexican border makes it a strategic location for cross-border trade and economic exchange.

Encircled by four majestic mountain ranges, the area offers plentiful opportunities for outdoor activities such as hiking and cycling. With more than 340 sunny days each year, Tucson has become a national leader in technological innovation, manufacturing, and solar energy production.

The city also benefits from the presence of the University of Arizona, a major research institution that drives advancements in optics, astronomy, and medical sciences. Tucson's economy is diverse, with significant contributions from the healthcare, education, government, and aerospace sectors.

*Info from US Census 2024, Oxford Economics, & ESRI

HOSPITAL SYSTEM OVERVIEW



Northwest Medical Center and Oro Valley Hospital are owned by Community Health Systems (CHS) which is one of the nation's leading healthcare providers, developing and operating healthcare delivery systems in 37 markets across 14 states.

CHS operates 71 affiliated hospitals in 14 states, with more than 10,000 beds, and offering more than 1,000 sites of care including physician practices, urgent care centers, freestanding emergency departments, occupational medicine clinics, imaging centers, cancer centers, and ambulatory surgery centers.

In 2022, affiliated hospitals provided \$1.4 billion in charity care.



LA CHOLLA MEDICAL CENTER

6130 N La Cholla Boulevard | Tucson, AZ 85741

KEVIN SMIGIEL

Vice President

T (602) 550-9295

Kevin.smigiel@transwestern.com

KATHLEEN MORGAN

Managing Director

T (602) 809-1048

Kathleen.morgan@transwestern.com

VINCE FEMIANO

Managing Director

T (602) 791-3310

Vince.femiano@transwestern.com

ANDREW OLIVET

Associate

T (602) 370-2685

Andrew.olivet@transwestern.com

The information provided herein was obtained from sources believed reliable; however, Transwestern makes no guarantees, warranties or representations as to the completeness or accuracy thereof. The presentation of this property is submitted subject to errors, omissions, change of price or conditions, prior sale or lease, or withdrawal without notice. Copyright © 2025 Transwestern

 **TRANSWESTERN**