

Availabilities



2725-2775 & 2855-2885

SAND HILL

9 BUILDINGS ±311,000 SF PROJECT SIZE ±1,423 SF - ±35,918 SF AVAILABILITY

Availabilities

 = Market-Ready Work Completion - Q1 2027

1 2735 SAND HILL	225	±2,235	VACANT
	230	±2,788	VACANT
2 2755 SAND HILL	150	±1,423	VACANT
	160	±2,901	VACANT
	170	±1,906	VACANT
Suites 150, 160 & 170 may be leased together for a total of ±6,230 SF			
3 2765 SAND HILL	100	±7,607	6/1/2026
	210	±2,415	6/1/2026
4 2865 SAND HILL	Full Building (Divisible)	± 25,723	1/1/2027
	POTENTIAL DIVISIBILITY PLAN		
	2 TENANT OPTION	TENANT A ±18,628	1/1/2027
5 2875 SAND HILL	100	±10,195	1/1/2027
	200	±11,562	6/1/2026



2735 SAND HILL ROAD

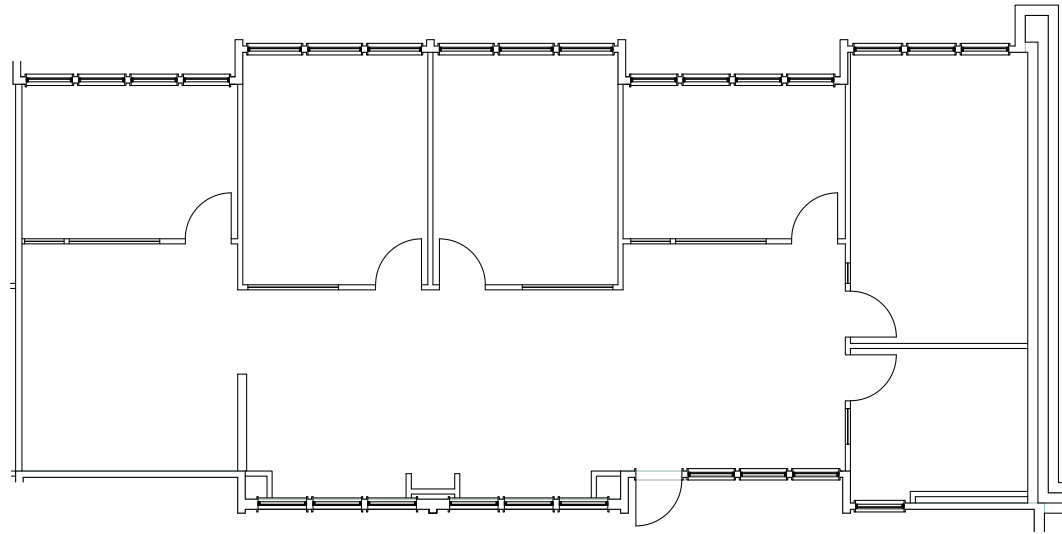
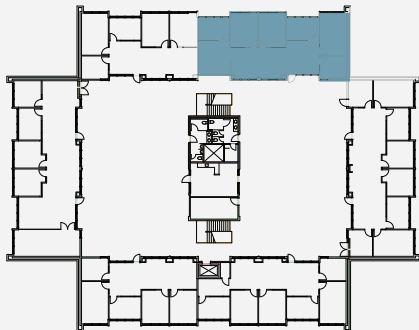


2nd FLOOR

Suite 225 | ±2,235 SF

Available June 1, 2026

Market Ready Work Completion
by Q1 2027



2735 SAND HILL ROAD

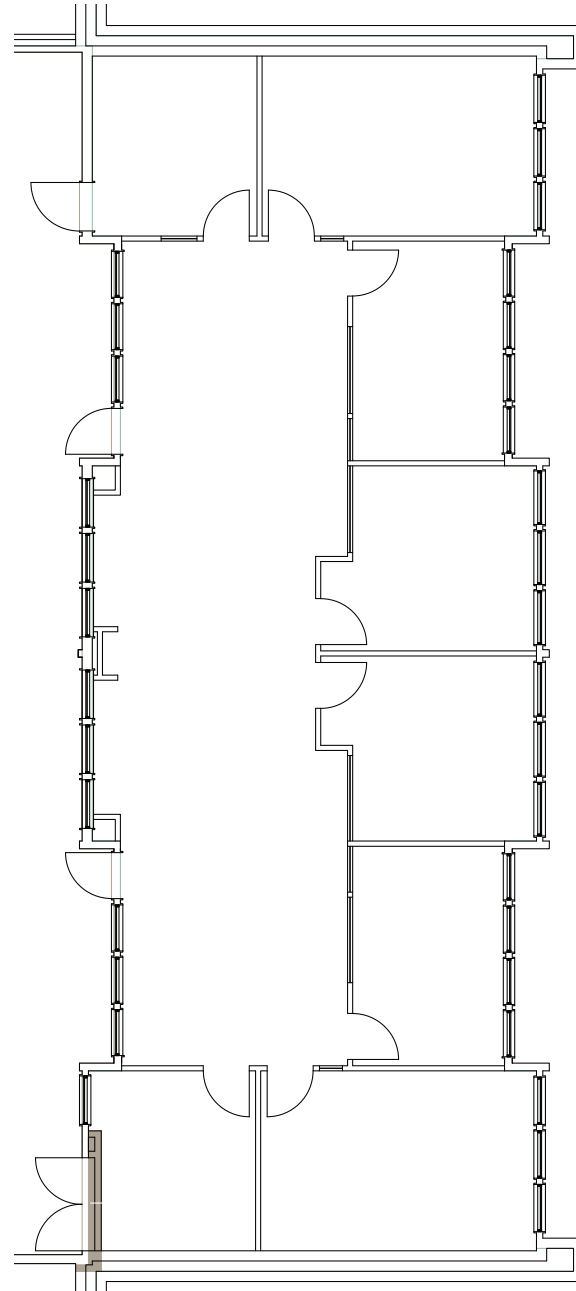
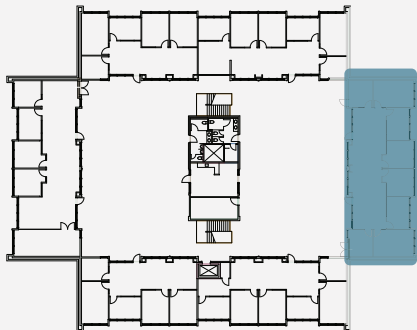


2nd FLOOR

Suite 230 | ±2,788 SF

Available NOW

Market Ready Work Completion
by Q1 2027



2755 SAND HILL ROAD

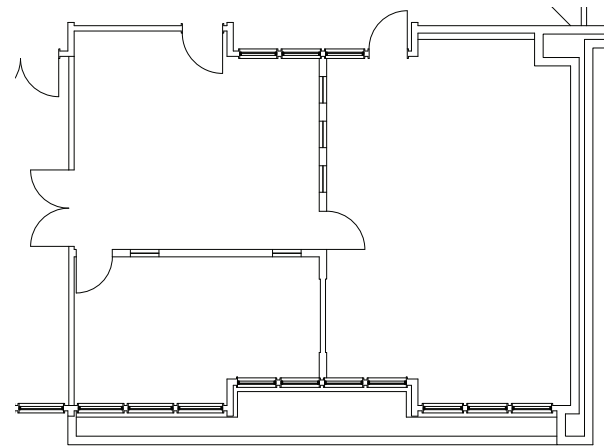
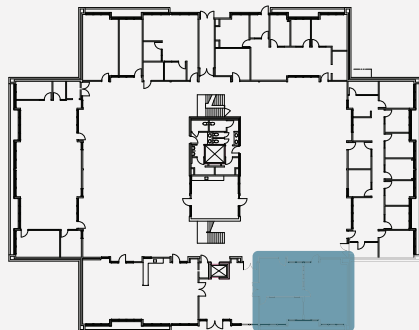


1st FLOOR

Suite 150 | ±1,423 SF

Available NOW

Market Ready Work Completion
by Q1 2027



2755 SAND HILL ROAD

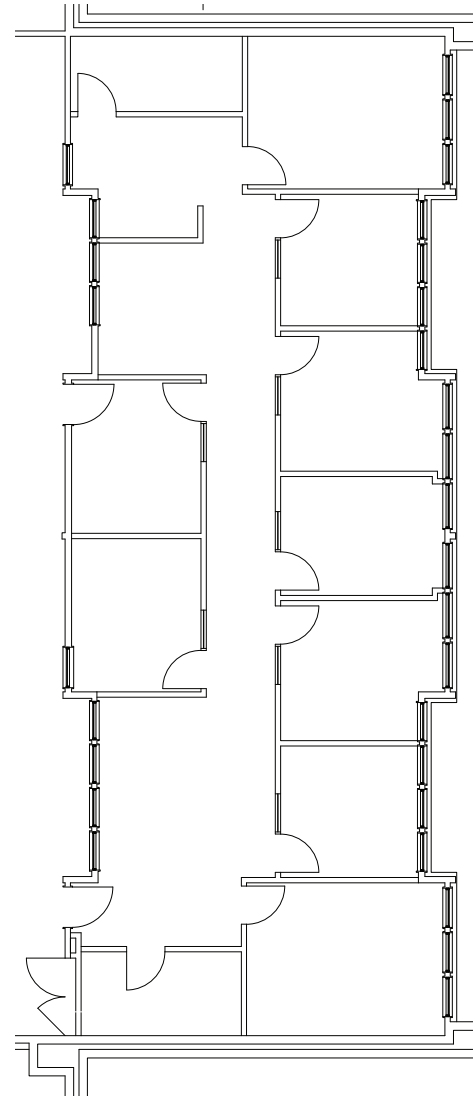
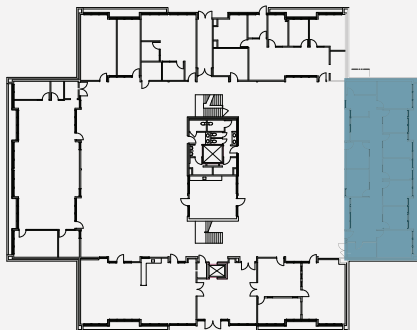


1st FLOOR

Suite 160 | ±2,901 SF

Available NOW

Market Ready Work Completion
by Q1 2027



2755 SAND HILL ROAD

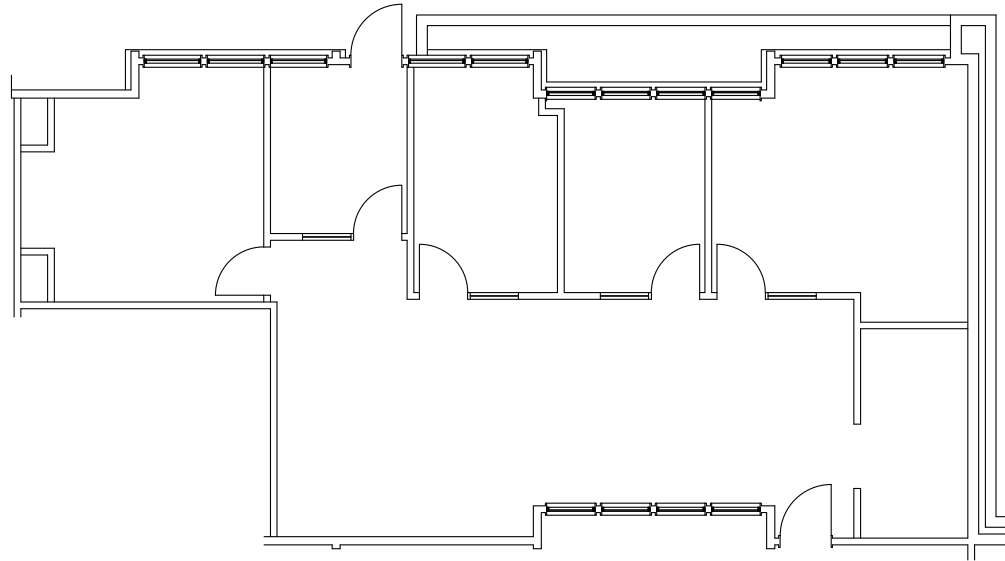
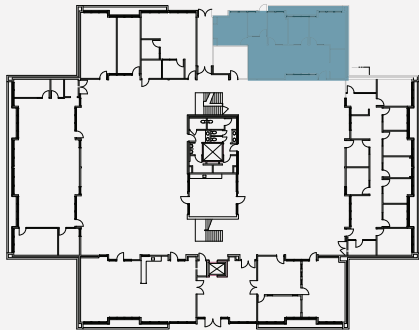


1st FLOOR

Suite 170 | ±1,906 SF

Available NOW

Market Ready Work Completion
by Q1 2027



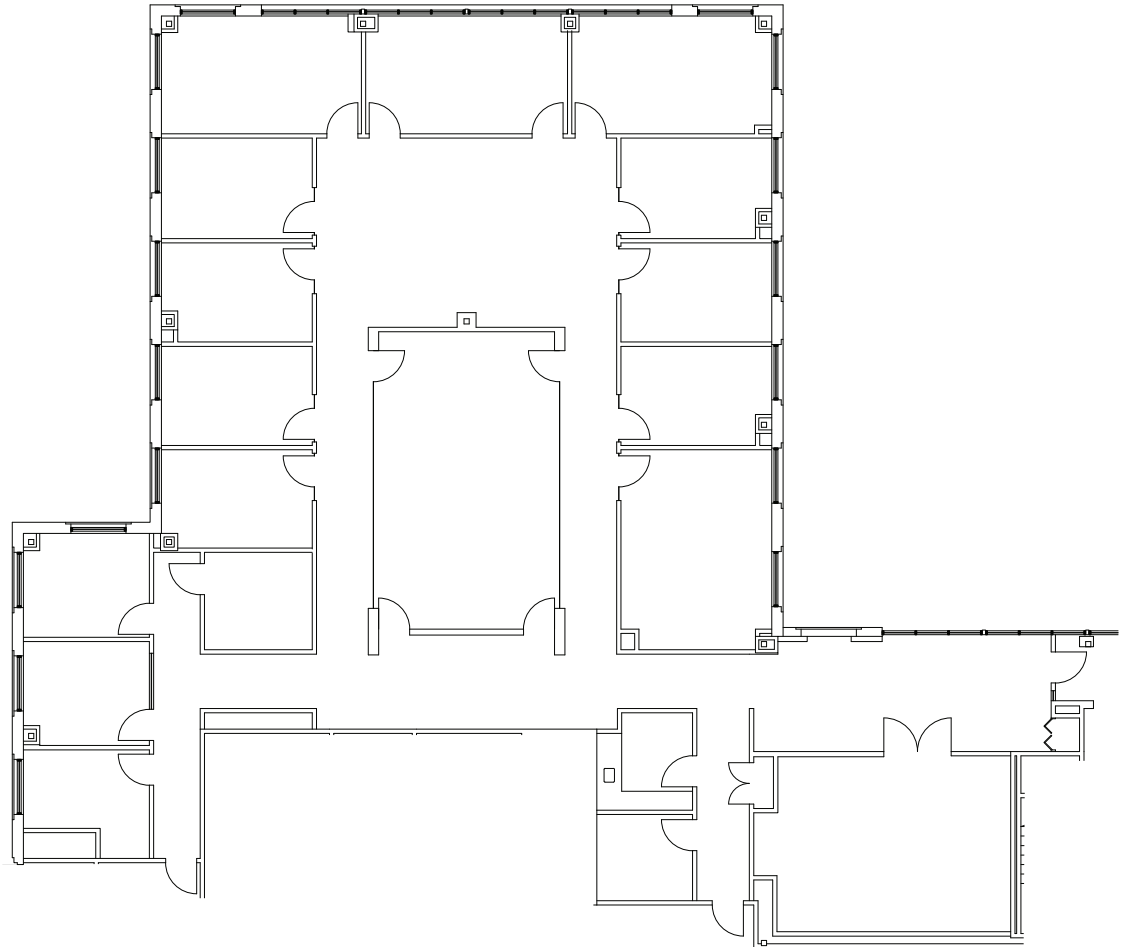
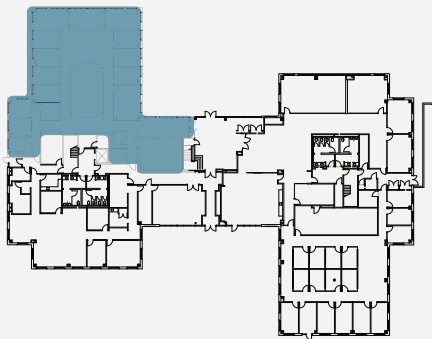
2765 SAND HILL ROAD



1st FLOOR

Partial | ±7,607 SF

Available June 1, 2026



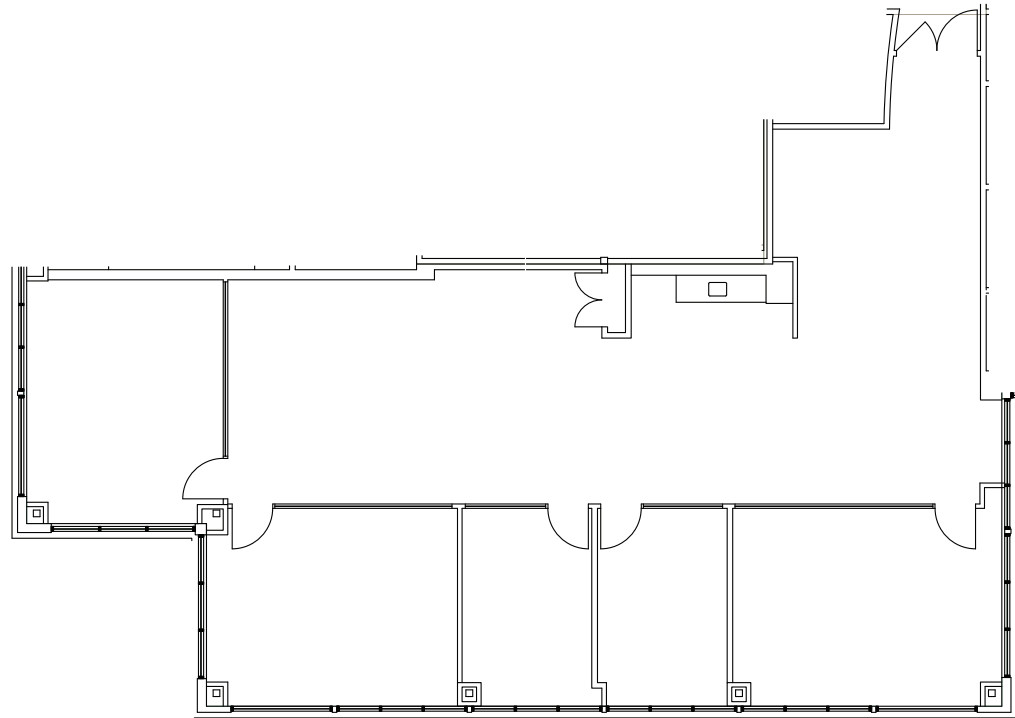
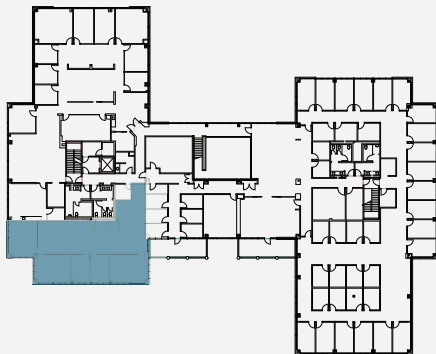
2765 SAND HILL ROAD



2nd FLOOR

Partial | ±2,415 SF

Available June 1, 2026



2865 SAND HILL ROAD



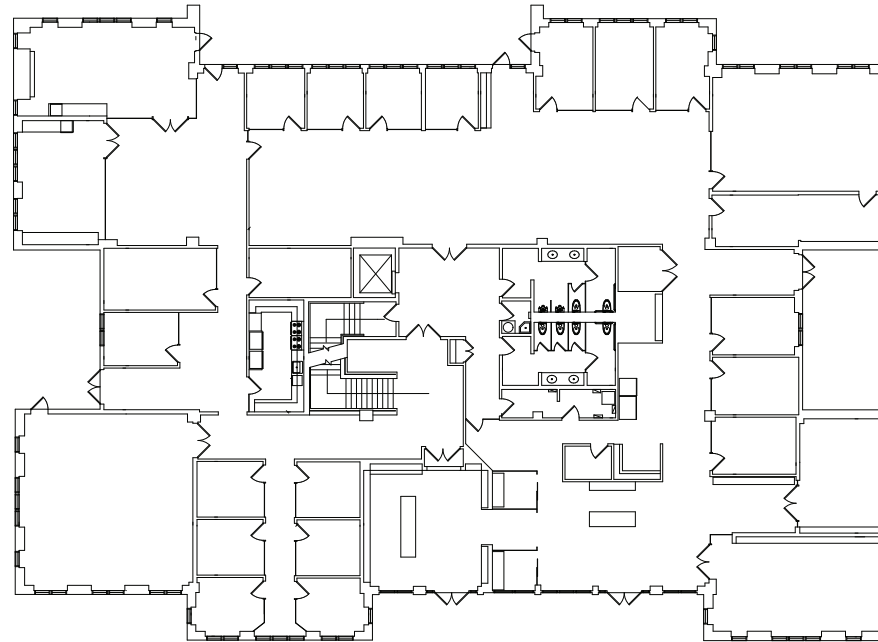
Full BUILDING

±25,723 SF

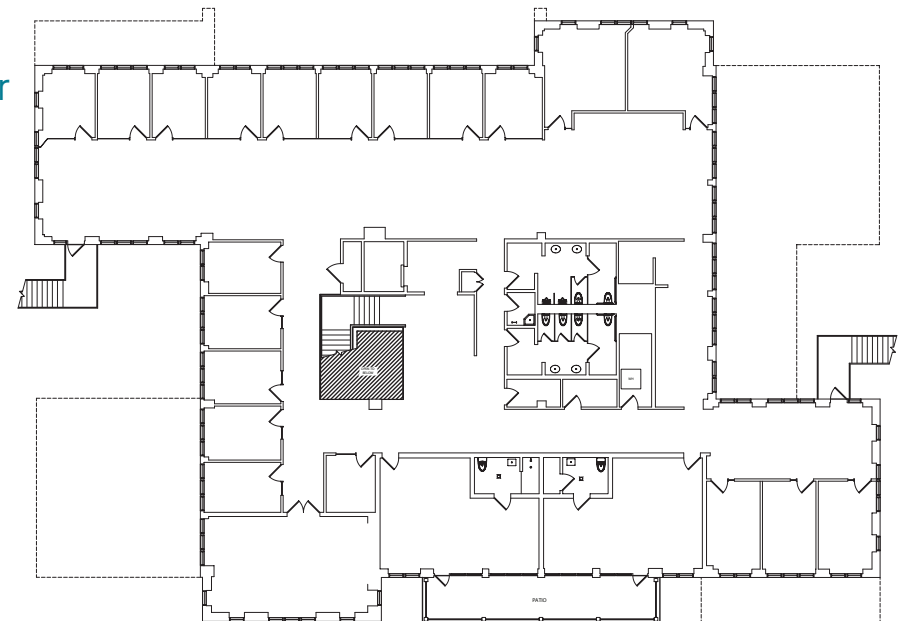
Available January 1, 2027



1st Floor



2nd Floor



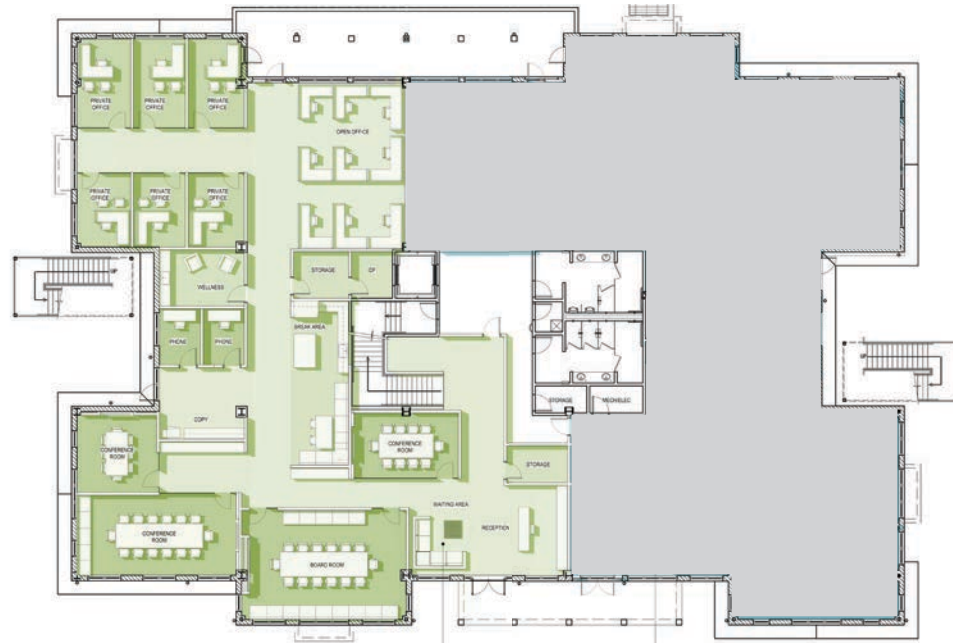
2865 SAND HILL ROAD



1st & 2nd FLOOR

±18,628 SF
(HYPOTHETICAL FLOORPLANS)

Available January 1, 2027



1ST FLOOR



2ND FLOOR



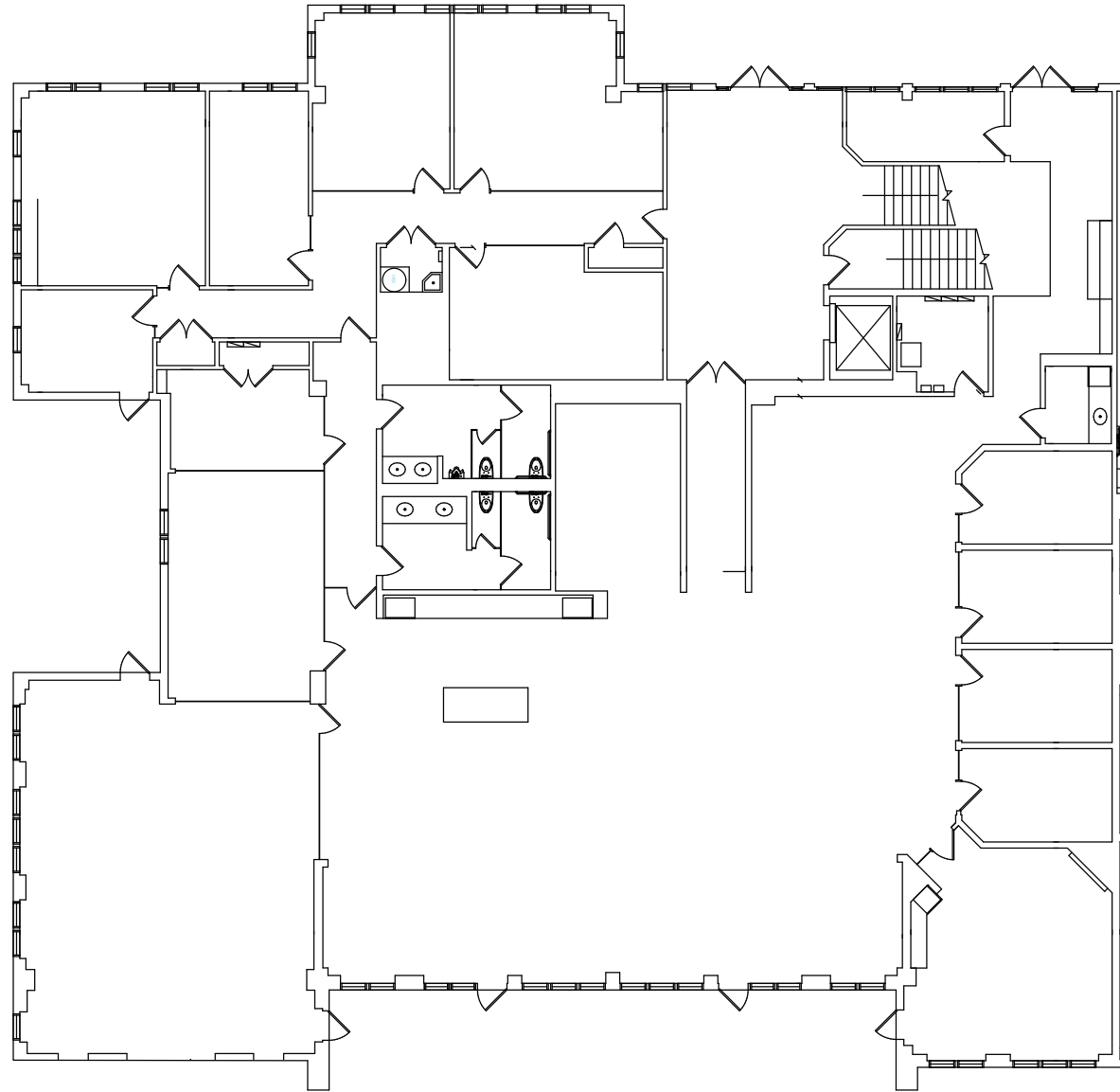
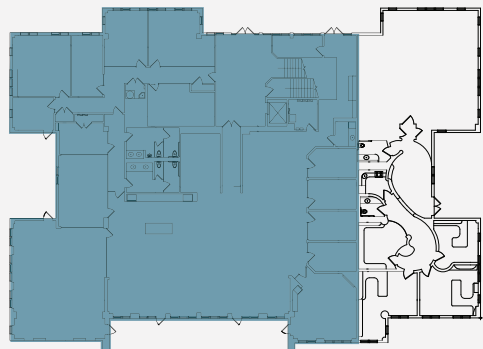
2875 SAND HILL ROAD



1st FLOOR

±10,195 SF

Available January 1, 2027



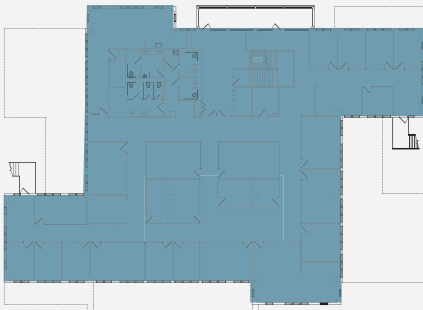


2nd FLOOR

±11,592 SF

(HYPOTHETICAL FLOORPLANS)

Available June 1, 2026





2725-2775 & 2855-2885

SAND HILL



For availabilities, contact exclusive listing agents:

Mike Courson
VICE CHAIRMAN

415.999.4909 | mike.courson@nrmk.com
CA RE Lic# 01358961

Colin Kloezeman
ASSOCIATE DIRECTOR

650.688.8532 | colin.kloezeman@nrmk.com
CA RE Lic# 02210827

NEWMARK

The distributor of this communication is performing acts for which a real estate license is required. The information contained herein has been obtained from sources deemed reliable but has not been verified and no guarantee, warranty or representation, either express or implied, is made with respect to such information. Terms of sale or lease and availability are subject to change or withdrawal without notice. 18236115485 | 04/26