

OLSON MEMORIAL CLINIC

16455 & 16463 Boones Ferry Rd | Lake Oswego, OR 97035

FOR LEASE



OFFICE SUITES AVAILABLE FOR LEASE

DETAILS

- Call for Rate

16455 Boones Ferry

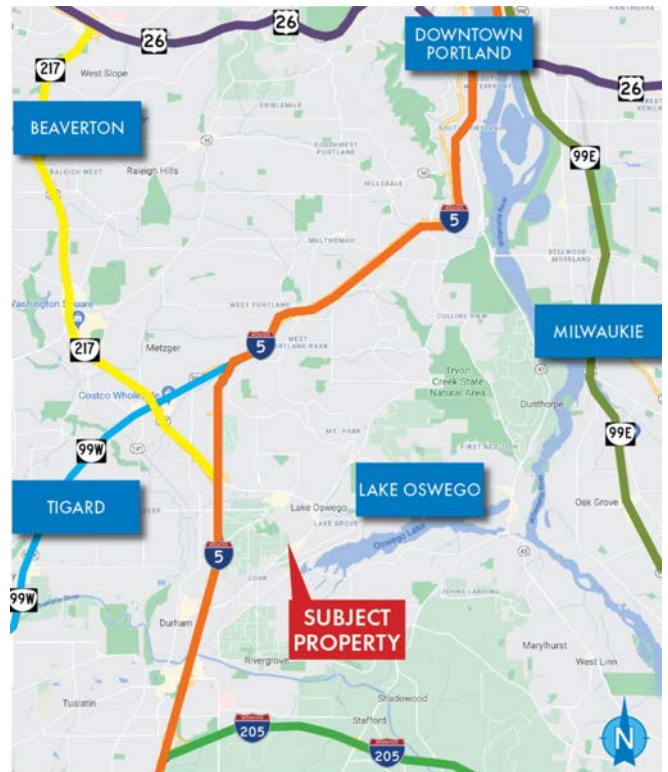
- Suite 500-A: ± 2,800 SF

16463 Boones Ferry

- Suite 300: ± 2,000 – 7,000 SF
 - Suite 400: ± 5,092 SF
- Available January 2027

FEATURES

- Medical office park
- Ample parking with 4.6/1,000
- Extremely visible in steady traffic area
- Easy access to I-5



06.05.2026

For more information or a property tour, please contact:

TIM PFEIFFER

503.225.8455

timp@norris-stevens.com



Information contained herein has been obtained from others and considered to be reliable; however, a prospective purchaser or lessee is expected to verify all information to their own satisfaction.

Norris & Stevens

INVESTMENT REAL ESTATE SERVICES

900 SW 5th Avenue • 17th Floor • Portland, OR 97204
503.223.3171 • norris-stevens.com

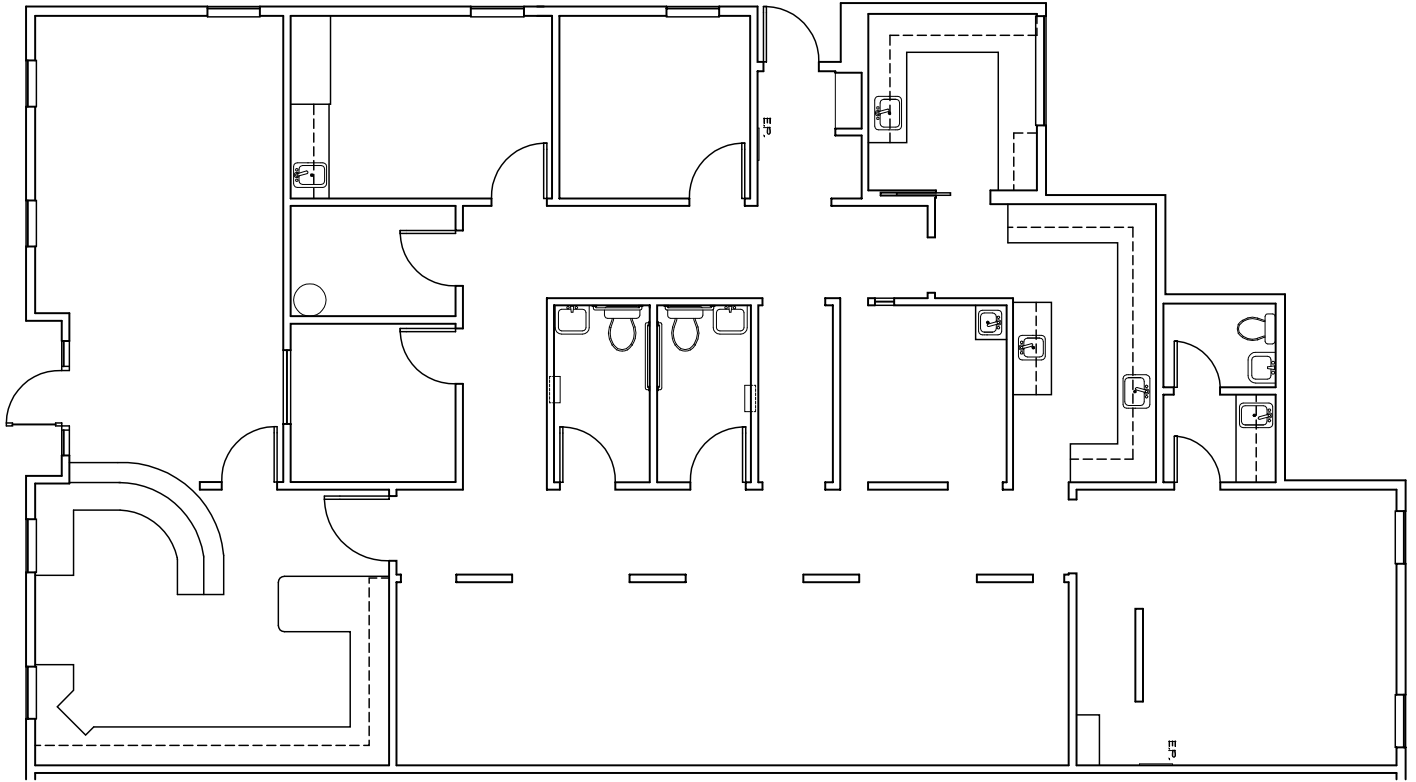
OLSON MEMORIAL CLINIC

16455 & 16463 Boones Ferry Rd | Lake Oswego, OR 97035

FOR LEASE

16455 - SUITE 500-A

± 2,800 SF



For more information or a property tour, please contact:

TIM PFEIFFER
503.225.8455
timp@norris-stevens.com

Norris & Stevens

INVESTMENT REAL ESTATE SERVICES



Information contained herein has been obtained from others and considered to be reliable; however, a prospective purchaser or lessee is expected to verify all information to their own satisfaction.

900 SW 5th Avenue • 17th Floor • Portland, OR 97204
503.223.3171 • norris-stevens.com

OLSON MEMORIAL CLINIC

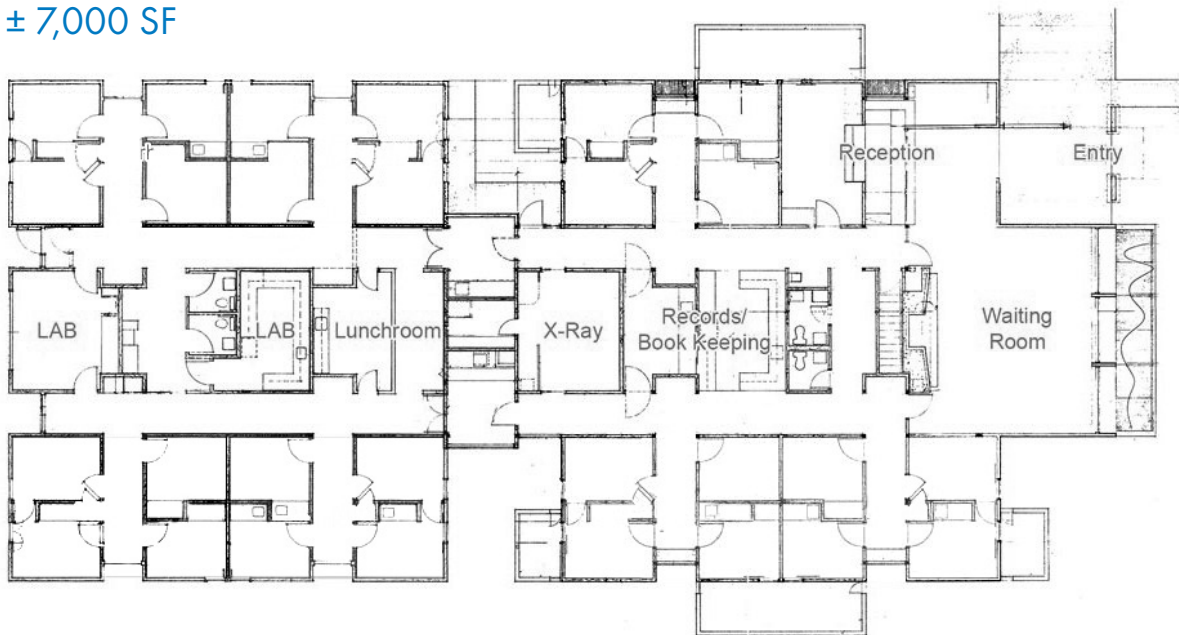
16455 & 16463 Boones Ferry Rd | Lake Oswego, OR 97035

FOR LEASE

16463 - SUITE 300



± 7,000 SF



For more information or a property tour, please contact:

TIM PFEIFFER

503.225.8455

timp@norris-stevens.com

Norris & Stevens

INVESTMENT REAL ESTATE SERVICES



Information contained herein has been obtained from others and considered to be reliable; however, a prospective purchaser or lessee is expected to verify all information to their own satisfaction.

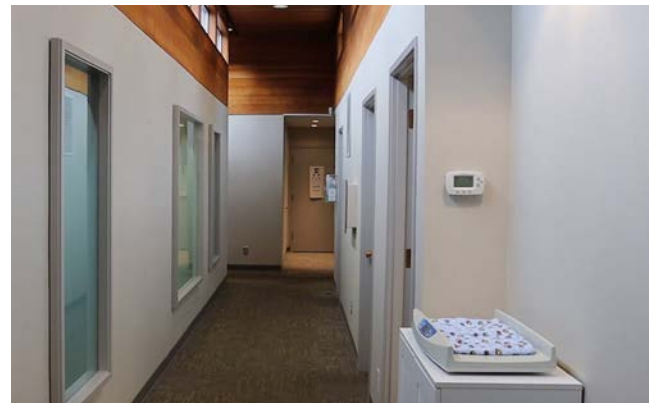
900 SW 5th Avenue • 17th Floor • Portland, OR 97204
503.223.3171 • norris-stevens.com

OLSON MEMORIAL CLINIC

16455 & 16463 Boones Ferry Rd | Lake Oswego, OR 97035

FOR LEASE

16463 - SUITE 400 ± 5,092 SF



For more information or a property tour, please contact:

TIM PFEIFFER

503.225.8455

timp@norris-stevens.com



Information contained herein has been obtained from others and considered to be reliable; however, a prospective purchaser or lessee is expected to verify all information to their own satisfaction.

Norris & Stevens

INVESTMENT REAL ESTATE SERVICES

900 SW 5th Avenue • 17th Floor • Portland, OR 97204
503.223.3171 • norris-stevens.com