



# 3120

NW 16th Terrace  
Pompano Beach, FL 33064



## POMPANO BEACH IOS SITE FOR LEASE

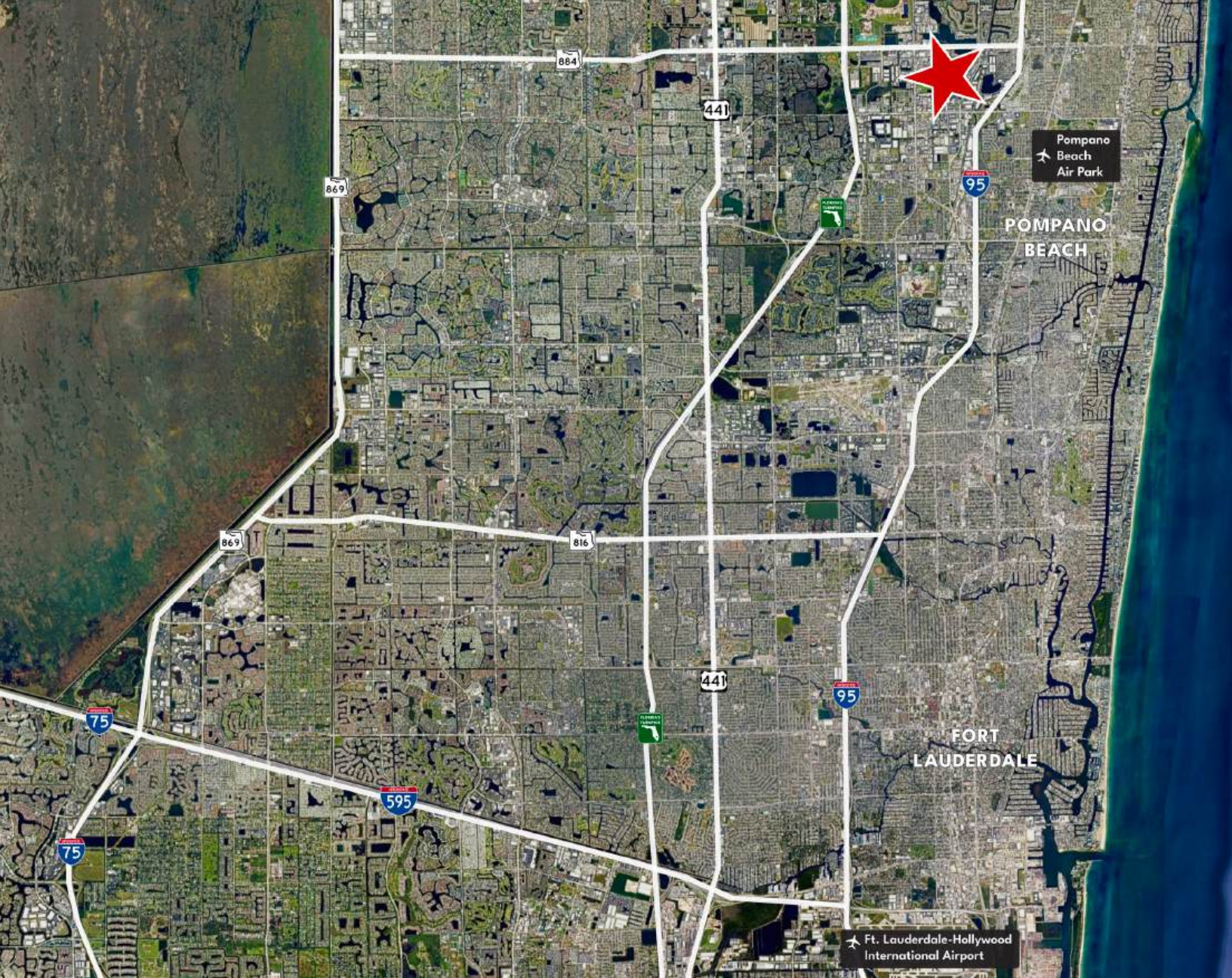
**+/- 4.8 Acres**

+/- 3,500 SF maintenance facility

**Chris Spear, SIOR, CCIM**  
cspear@comreal.com  
(305) 807-7662

**Pat McBride, SIOR, Esq.**  
pmcbride@comreal.com  
(305) 619-2937

Owned & Managed by:  
**REALTERM**



## PROPERTY OVERVIEW



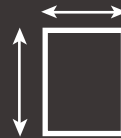
+/- 3,500 SF  
Maintenance Facility  
& +/- 1,500 SF Office



+/- 4.8 Acres  
of Land



2 Oversized Street  
Level Doors  
(16'X16' & 12'X16')



Fully Paved, Drained,  
Fenced & Lit



I-1 Pompano  
Beach Zoning

## DISTANCE TO

Florida Turnpike:	2.3 miles
I-95:	2.5 miles
Port Everglades:	14 miles
Fort Lauderdale-Hollywood Airport:	15 miles
I-595:	17 miles



Owned and Managed by:

**REALTERM**

For Leasing Inquiries, Contact:

**Chris Spear, SIOR, CCIM**

csppear@comreal.com

(305) 807-7662

**Pat McBride, SIOR, Esq.**

pmcbride@comreal.com

(305) 619-2937

**ComReal**

3470 NW 82nd Ave, Suite 605

Doral, FL 33122

Disclosure: All information provided herein is obtained from sources that we believe to be reliable, but has not been verified for accuracy or completeness. Any reliance on this information is solely at your own risk. Terms and conditions or change in price are subject to change without notice.