



Trammell Crow
Center

THIRTY
THREE

&

THIRTY
FOUR

FLOORS 33 AND 34 AVAILABLE
AT TRAMMELL CROW CENTER
56,059 SF CONTIGUOUS

THE DETAILS

BUILDING

Trammell Crow Center

2001 Ross Avenue
Located in the heart of the Arts District between
Ross Ave and Flora, and Olive St and Harwood St

YEAR BUILT

1984
Renovated in 2019

AVAILABLE SPACE

33rd Floor - 27,990 SF
34th Floor - 28,069 SF
Contiguous Space - 56,059SF

PARKING

3:1,000 covered parking

Ross Avenue Garage
Unreserved: \$170 + tax/month/space

Building Garage
Unreserved: \$190 + tax/month/space
Reserved: \$300 + tax/month/space

LEASING COMPANY

Stream Realty Partners

Chase Lopez
214.267.0465
clopez@streamrealty.com

Marissa Parkin
214-560-2435
marissa.parkin@streamrealty.com

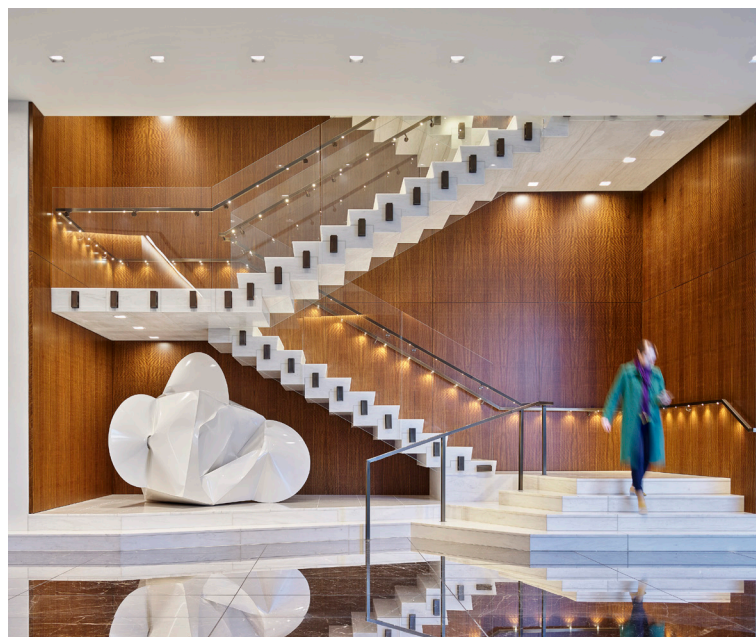
SECURITY

Trammell Crow Center offers on-site security on
a 24-hour, 7-day a week basis.

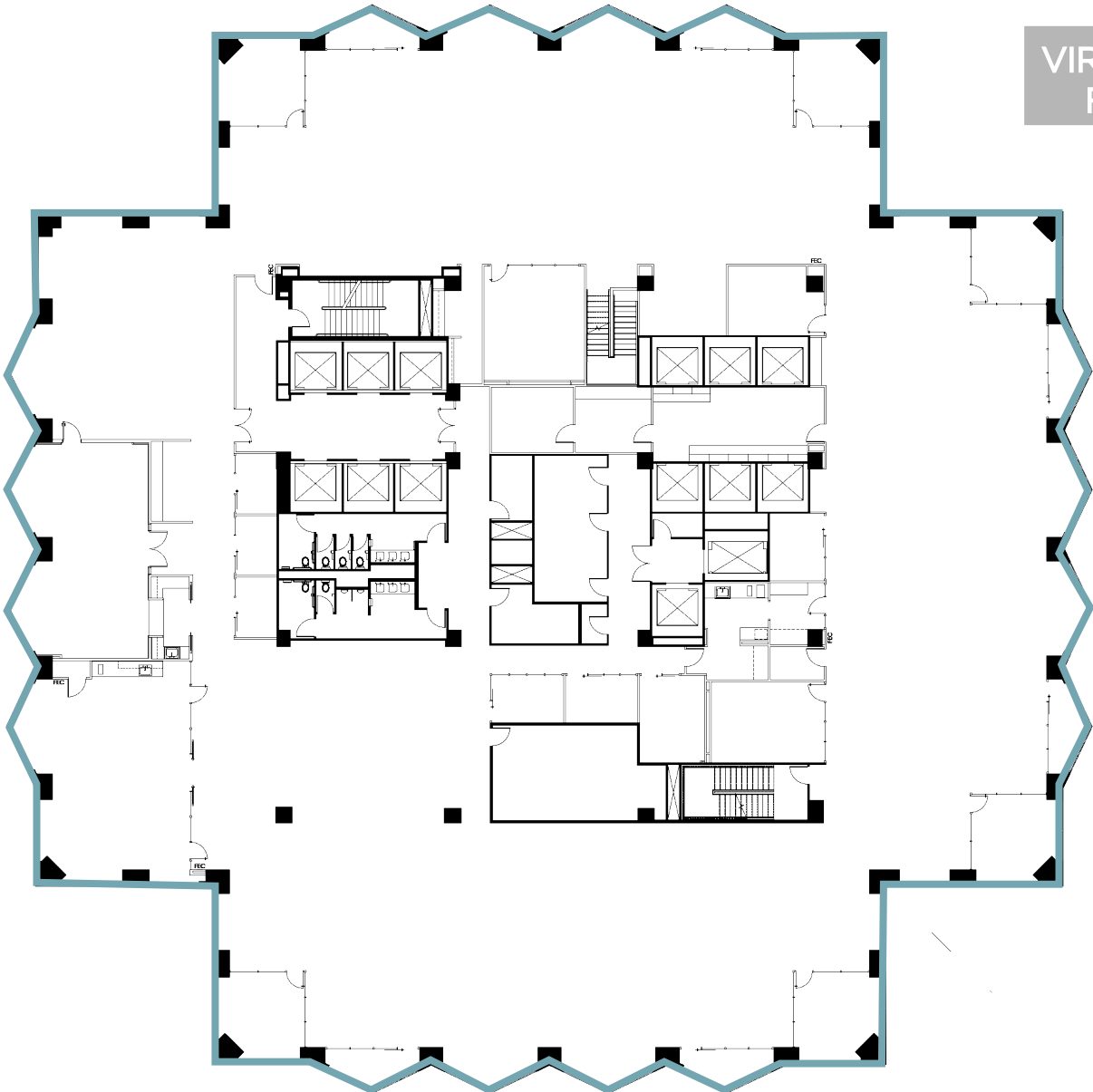
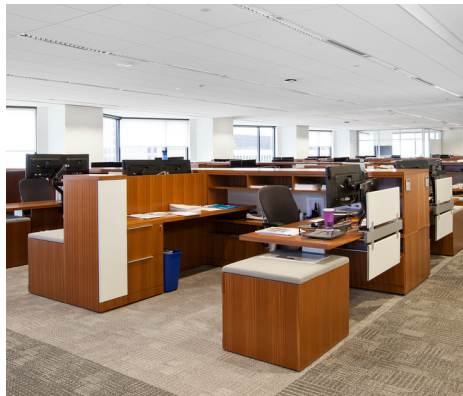
Cameras monitors, intercoms, and magnetic locks
are located on the main entrances.

OPERATING EXPENSES & ELECTRICITY

\$13.99/RSF OPEX (2025)
\$1.76/RSF Electric (2025)

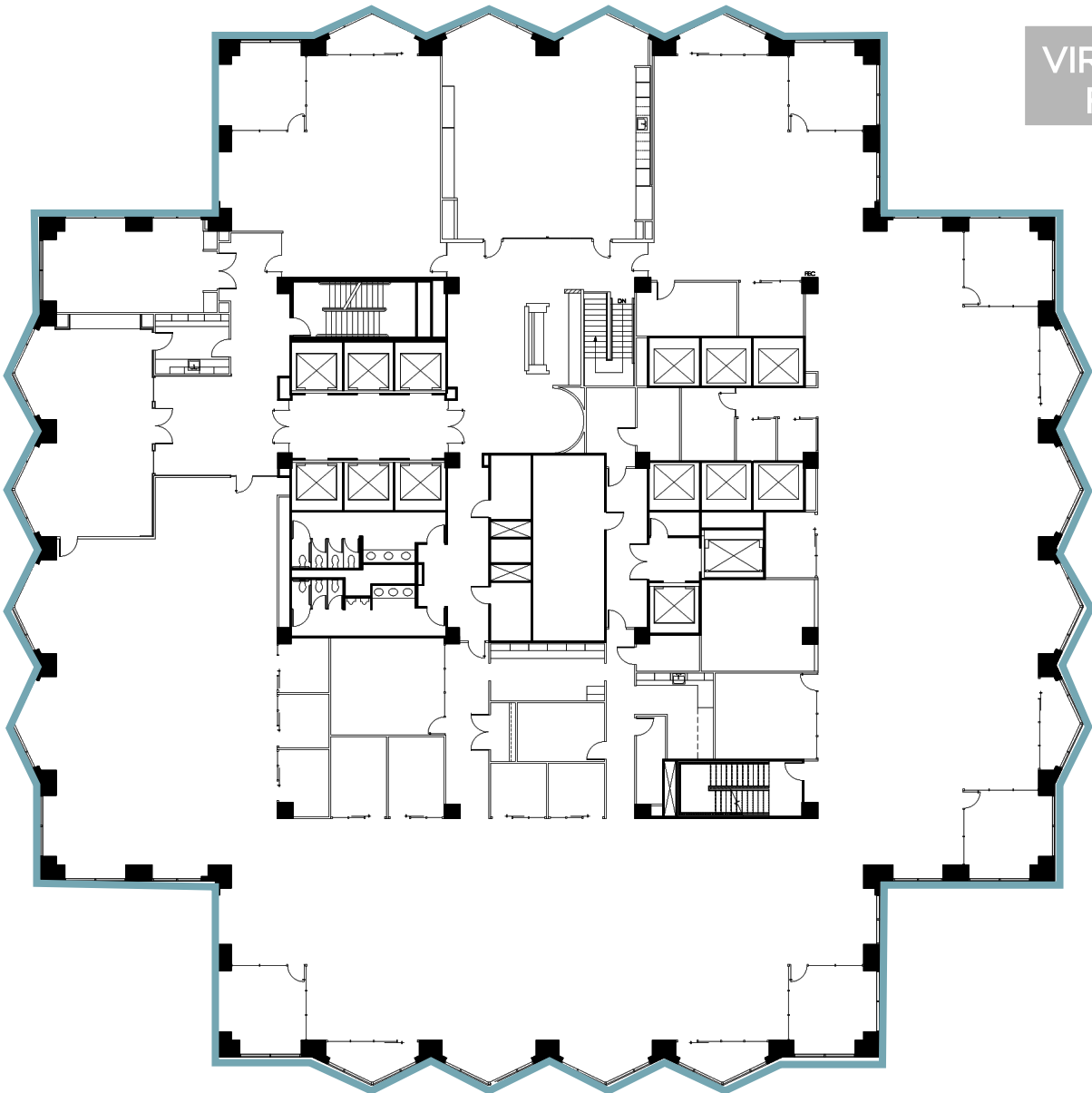


33RD FLOOR



VIRTUAL TOUR
FLOOR 33

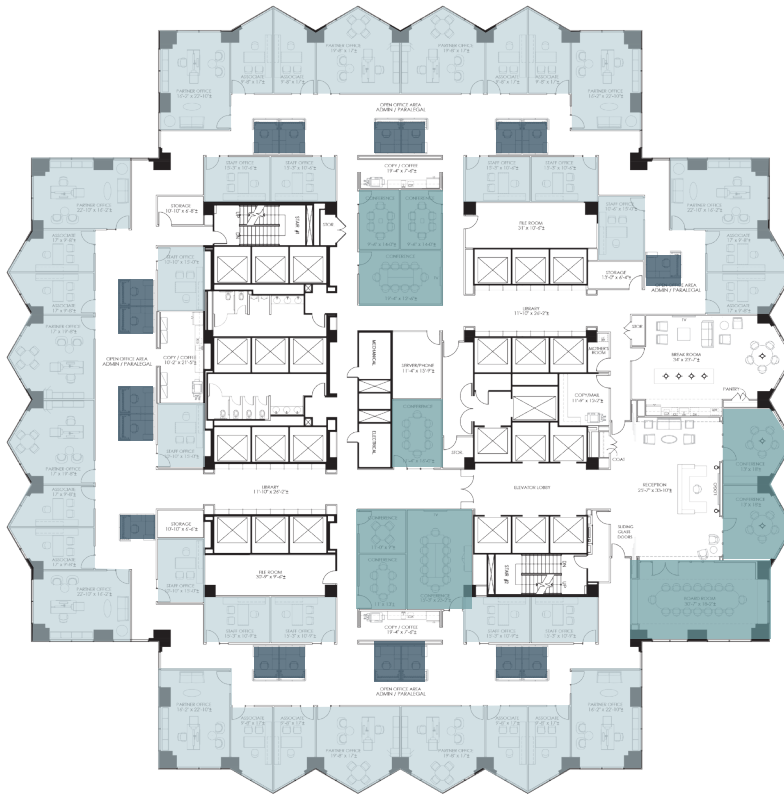
34TH FLOOR



VIRTUAL TOUR
FLOOR 34

HYPOTHETICAL TEST FITS

OFFICE INTENSIVE LAYOUT

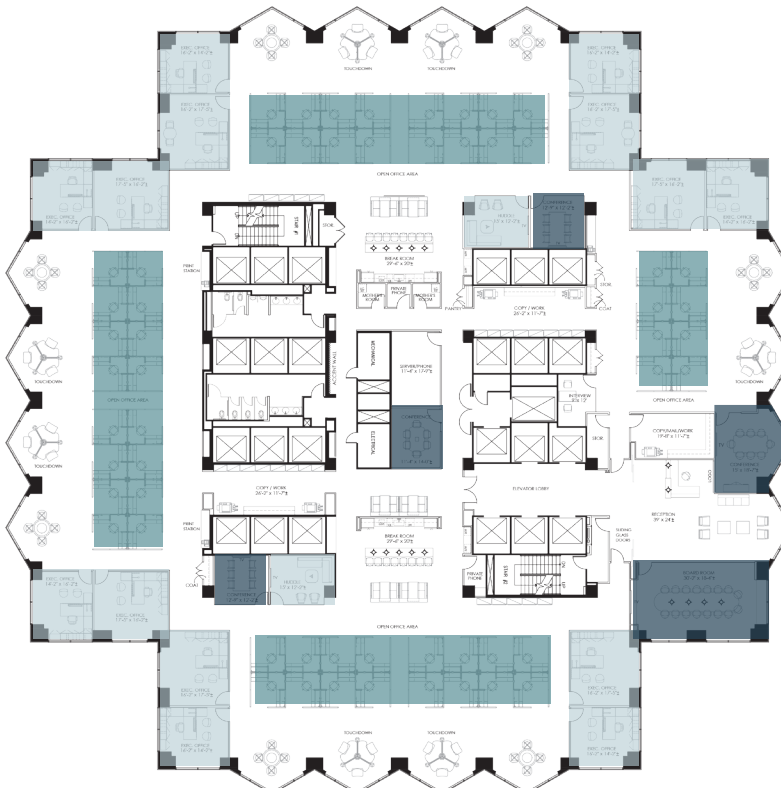


39 OFFICES

19 WORKSTATIONS

10 MEETING ROOMS

OPEN OFFICE LAYOUT



16 OFFICES

57 WORKSTATIONS

5 MEETING ROOMS



www.trammellcrowcenter.com

FOR MORE INFORMATION, CONTACT:

Chase Lopez or **Marissa Parkin** at 214.267.0400

leased by



owned and managed by

