

**GENERAL NOTES:**

- ALL TENANT DEMISING PARTITIONS SHALL BE SLAB TO STRUCTURE WITH SOUND ATTENUATION BATTS.
- ALL INTERIOR PARTITIONS SHALL BE SLAB TO CEILING WITHOUT SOUND ATTENUATION BATTS.
- FURNISH AND INSTALL BUILDING STANDARD FINISHES.
- ALL FURNITURE SHOWN IS FOR VISUAL PURPOSES ONLY.
- LOCATION AND DIMENSIONS OF PROPOSED ELEVATOR DESIGN TO BE DETERMINED - LL SHALL PROVIDE DETAILS PERTAINING TO SCOPE AND LOCATION.

**PROJECT NOTES:**

**BUILDING AMENITIES / BUILDING COMMON AREA**

- FURNISH AND INSTALL ADA COMPLIANT RESTROOM FIXTURES AND FITTINGS AS INDICATED ON PLAN.
- FURNISH AND INSTALL ADA COMPLIANT COUNTER, SINK, FAUCET AT BUILDING BREAK ROOM. PROVIDE PLASTIC LAMINATE COUNTER, UPPER AND LOWER CABINETS. PROVIDE SPACE IN CABINETS FOR MICROWAVE. DESIGN DETAILS TO FOLLOW.
- FURNISH AND INSTALL HI-LOW DRINKING FOUNTAIN AS INDICATED ON PLAN.

**SUITE 100**

1. FURNISH AND INSTALL DOUBLE ENTRY DOORS WITH GLASS INSET AND FILM.
2. FURNISH AND INSTALL CUSTOM RECEPTION DESK - DESIGN TO FOLLOW
3. FURNISH AND INSTALL PLASTIC LAMINATE COUNTER, LOWER AND UPPER CABINETS AT COPY AREA.

**SUITE 200**

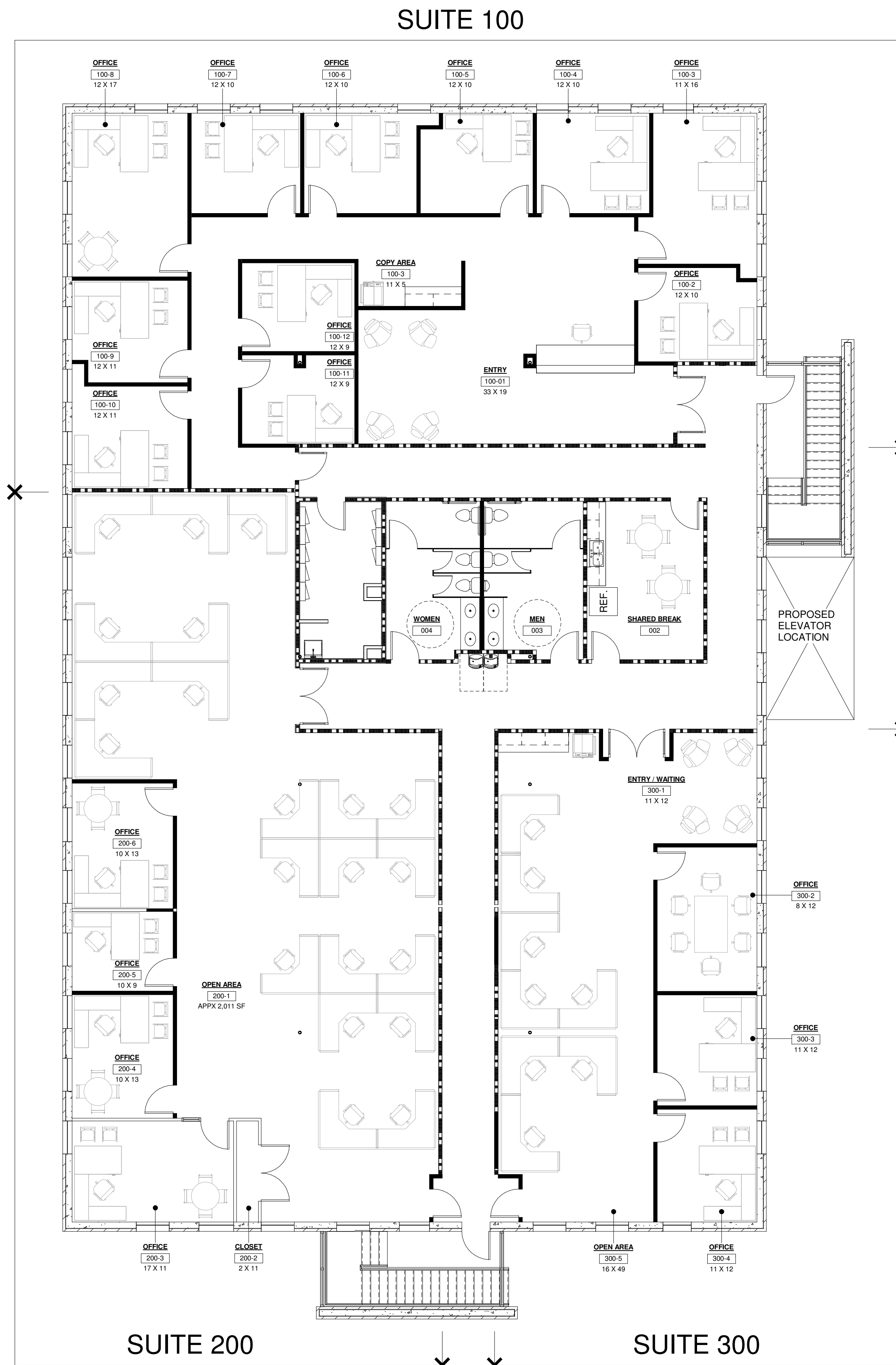
1. FURNISH AND INSTALL ENTRY DOOR WITH GLASS INSET AND FILM.

**SUITE 300**

1. FURNISH AND INSTALL ENTRY DOORS WITH GLASS INSET AND FILM.
2. FURNISH AND INSTALL PLASTIC LAMINATE COUNTER, LOWER AND UPPER CABINETS AT COPY AREA.

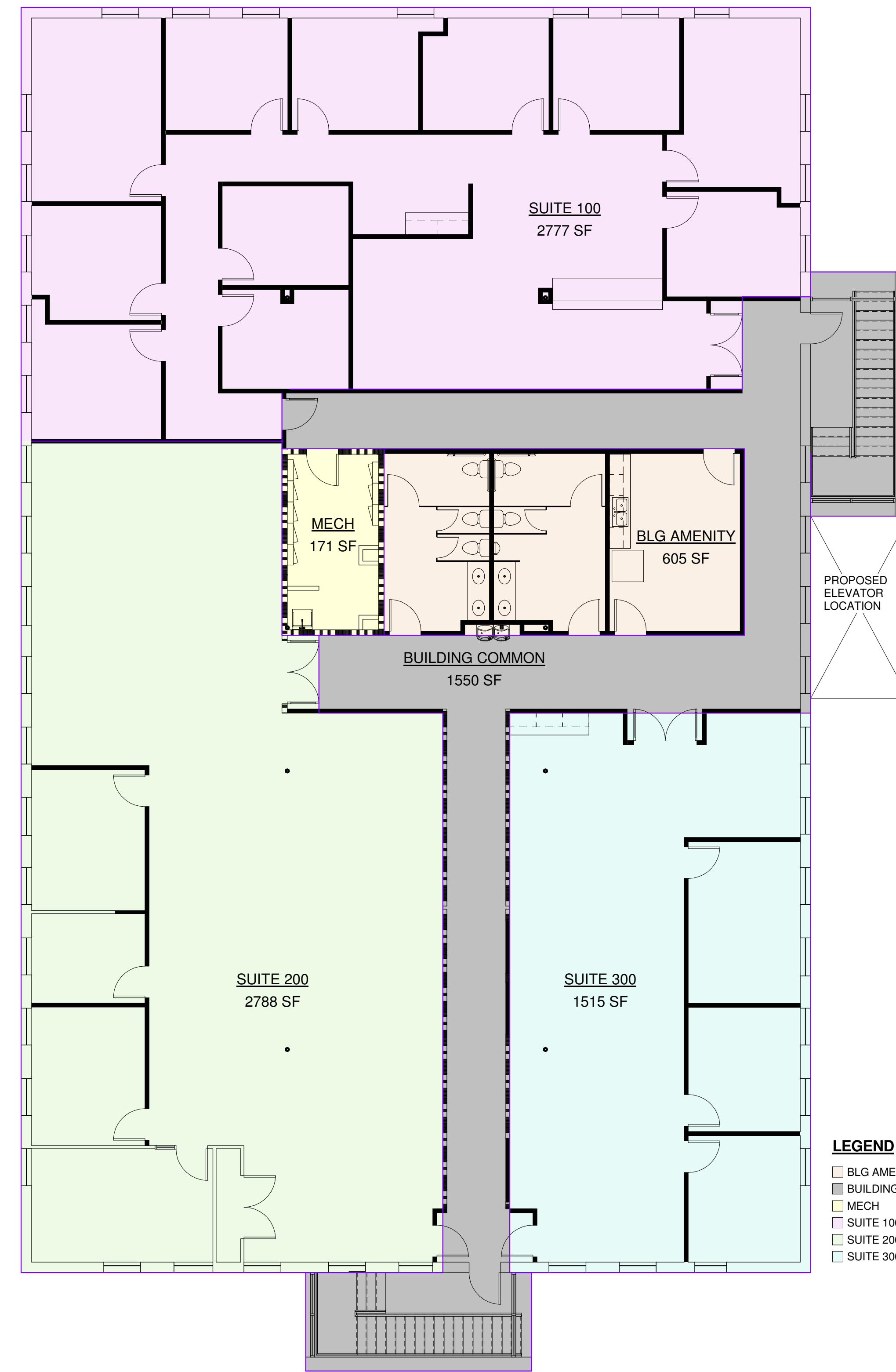
**NOTE WELL:**

ALL SQUARE FOOTAGES SHOWN ARE USABLE SQUARE FOOTAGE. BOMA HAS NOT BEEN CALCULATED FOR THIS SPACE.



1 PRELIMINARY PLAN  
1/8" = 1'-0"

2 AREA PLAN  
1/8" = 1'-0"



**LEGEND**

- BLG AMENITY
- BUILDING COMMON
- MECH
- SUITE 100
- SUITE 200
- SUITE 300

REVISION SCHEDULE	
NUMBER	DATE

PROJECT: **CORPORATE OFFICE RENOVATION**  
1706 NORTHEAST EXPRESSWAY  
BROOKHAVEN, GA 30029

CLIENT: **NELKIN REAL ESTATE**  
PRELIMINARY PLAN - REVISED 03.23.2023

STAMP:   
STAMP DATE:

PROJECT NUMBER: 7/01/19/23  
DATE: 03.14.2023  
DRAWN BY: BN  
SCALE: 1/8" = 1'-0"  
SHEET NUMBER: A-1.02  
REVIEW AND APPROVE:  NOT RELEASED FOR CONSTRUCTION  
RELEASED FOR CONSTRUCTION: