

# For Sale

## 5.75 Acres Rhinelander, WI

Commercial Development Opportunity Zoned B-3

Available  
5.75 Ac  
Navajo St

### \$599,000



Rhinelanders Wisconsin Is Growing!



### PROPERTY HIGHLIGHTS

- 5.75 Ac
- 283 Feet Road Frontage
- 10,200 traffic count
- Zoned B-3
- In the City of Rhinelander
- Off the Hwy 17 Bypass
- Close Proximity to Big Box and Hospital



### CONTACT US

**PETE TENDERHOLT**

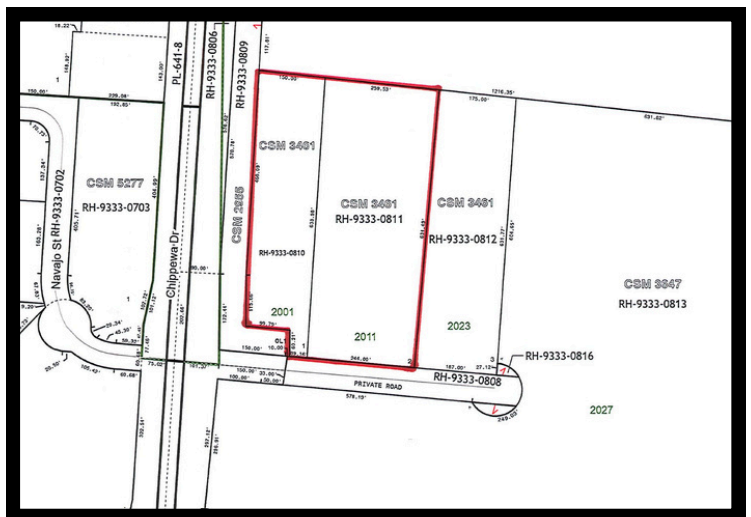
**715-360-0003**

**PTENDERHOLT@HOTMAIL.COM**

**DEB MANN**

**715-499-4470**

**DMANN@SHOREWEST.COM**



# 5.75 Acres Rhinelander , WI



PROPERTY **ARIEL**



# 5.75 Acres Rhinelander, WI



## Oneida County

### Population

Rhinelander Population: 8,185

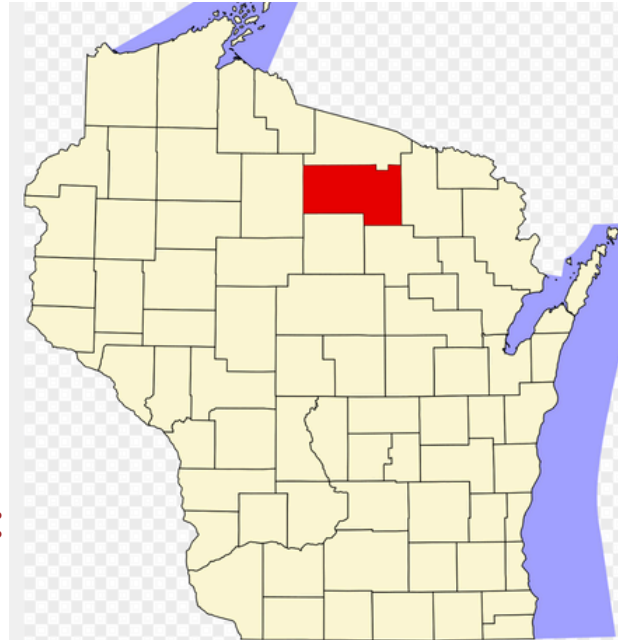
Oneida County Population: 37,845

### Median Family Income:

\$69,621

### Prominent Industries in the Region:

- Healthcare & Social Assistance
- Retail Trade
- Manufacturing
- Agriculture/Forestry/Fishing/Hunting
- Educational Services
- Mining/Quarrying/Oil/Gas Extraction
- Nicolet College




### Web links:

<https://explorerhinelander.com/>

<https://www.co.oneida.wi.us>

<https://oneidacountywi.com/>



**Pete Tenderholt**  
*Successful Real Estate Transactions*  
**Commercial/Residential/Land**  
**715-360-0003**  
**Ptenderholt@hotmail.com**

601 Lincoln St, Rhinelander, WI 54501



**Deb Mann**  
*Successful Real Estate Transactions*  
**Commercial/Residential/Land**  
**715-499-4470**  
**Dmann@Shorewest.Com**

601 Lincoln St, Rhinelander, WI 54501

This information has been obtained from sources believed reliable. We have not verified it and make no guarantee, warranty, or representation about it. Any projections, opinions, assumptions, or estimates used are for example only and do not represent the current or future performance of the property. You and your advisors should conduct a careful, independent investigation of the property to determine to your satisfaction the suitability of the property for your needs. Photos herein are the property of their respective owners and use of these images without the express written consent of the owner is prohibited.

