

**SUITE 404**  
**4,502 SF AVAILABLE**

**3615** WILLOWBEND

- 400
- 406 KAMHOS SEAFOOD OF TEXAS, LLC
- 408 FORMATIVE STRUCTURES LLC
- 412
- 414
- 416
- 420 EL SALVADOR PRODUCTS, INC
- 424 EL SALVADOR PRODUCTS, INC
- 426 PLAIN & HOPE SALES

**FOR LEASE**

**WILLOWBEND BUSINESS PARK**

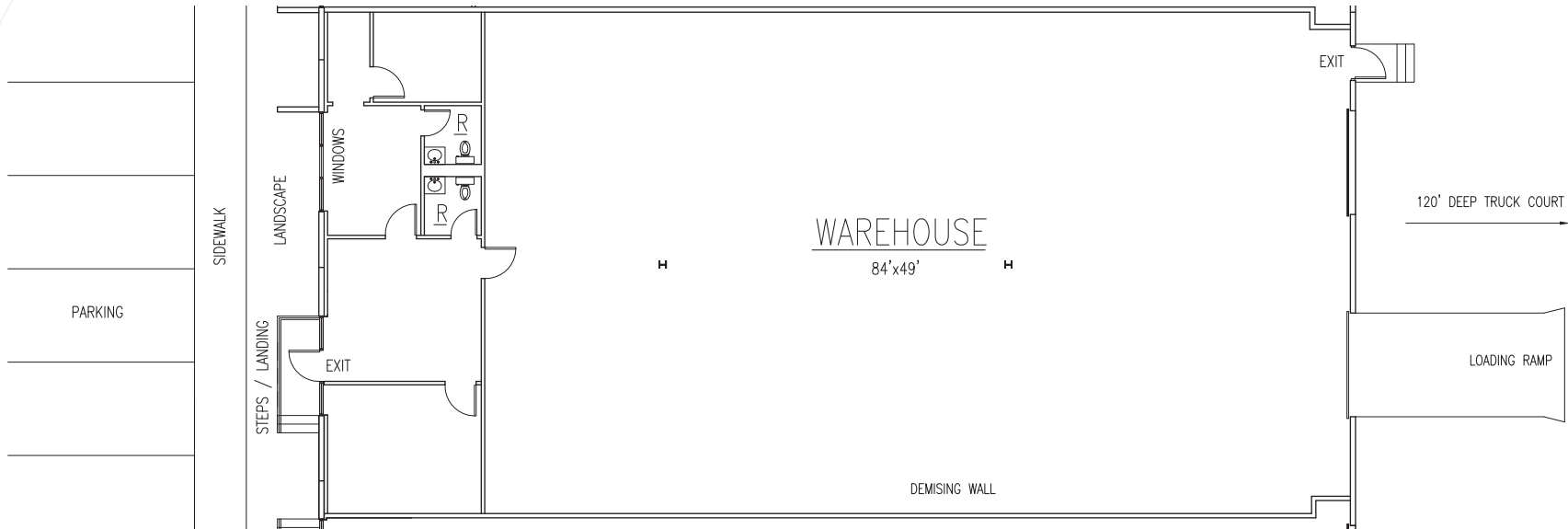
**3615 WILLOWBEND BLVD, HOUSTON, TX 77054**



# WILLOWBEND BUSINESS PARK

## 3615 WILLOWBEND BLVD., HOUSTON, TX 77054

4,502 SF AVAILABLE FOR LEASE



## SUITE 404

- 4,502 SF Total Available
- 1,038 SF Office
- 3,464 SF Warehouse
- (1) Semi-Dock Loading Door
- (1) Drive-In Loading Door
- 15' Clear Height
- Rear Load Configuration
- Great Access to 610 Loop & Highway 90
- Only 3 Miles from Texas Medical Center
- Only 2 Miles from NRG Stadium / Astrodome
- Only 5 Miles from Galleria / Uptown
- Only 7 Miles from CBD / Downtown

# LOCAL AERIAL



CBD (7 MILES)

MEDICAL CENTER (3 MILES)

NRG STADIUM (2 MILES)

610 (1.5 MILES)



STELLA LINK ROAD

HIGHWAY 90 / MAIN ST

BUFFALO SPEEDWAY  
WILLOWBEND BLVD.

HOLMES ROAD

3625

3647

3635

3615

3605

3639

**WILLOWBEND  
BUSINESS PARK**

3643

UNION-PACIFIC-RAIL

3651





# WILLOWBEND

## FOR MORE INFORMATION, PLEASE CONTACT:

**JOHN KRUSE**  
Managing Director  
713-304-4919  
john.kruse@cushwake.com

**CARTER HOLMES**  
Senior Director  
713-417-5447  
carter.holmes@cushwake.com

©2026 Cushman & Wakefield. All rights reserved. The information contained in this communication is strictly confidential. This information has been obtained from sources believed to be reliable but has not been verified. NO WARRANTY OR REPRESENTATION, EXPRESS OR IMPLIED, IS MADE AS TO THE CONDITION OF THE PROPERTY (OR PROPERTIES) REFERENCED HEREIN OR AS TO THE ACCURACY OR COMPLETENESS OF THE INFORMATION CONTAINED HEREIN, AND SAME IS SUBMITTED SUBJECT TO ERRORS, OMISSIONS, CHANGE OF PRICE, RENTAL OR OTHER CONDITIONS, WITHDRAWAL WITHOUT NOTICE, AND TO ANY SPECIAL LISTING CONDITIONS IMPOSED BY THE PROPERTY OWNER(S). ANY PROJECTIONS, OPINIONS OR ESTIMATES ARE SUBJECT TO UNCERTAINTY AND DO NOT SIGNIFY CURRENT OR FUTURE PROPERTY PERFORMANCE.

