

# PROFESSIONAL OFFICE SPACE - PARK PLAZA, UNIT P

## 1300 N Holopono Street, Kihei, HI 96753



### PROPERTY DESCRIPTION

Welcome to Park Plaza, an exceptional professional office environment located in the heart of the Maui Research and Technology Park in Central Kihei.

Surrounded by a thriving community of established businesses, Park Plaza offers modern infrastructure, abundant parking, and a beautifully landscaped central courtyard that creates a welcoming and productive atmosphere.

Unit P offers 730 square feet of versatile space, featuring expansive windows, that fill the interior with natural light and showcase ocean views - creating a bright and inspiring workspace for your team.

This is a rare opportunity to join a prestigious group of professional tenants in a well-maintained, centrally located building and convenient access to all of South Maui. Schedule a tour and secure your place in one of Kihei's most desirable office environments.

### PROPERTY HIGHLIGHTS

- Ample on-site parking
- Lush common area courtyard
- Central Kihei location
- Ideal for professional office or medical practitioners
- ADA access with 2 elevators on-site
- Tenant is to maintain A/C by Certified Air and replace if needed

### OFFERING SUMMARY

Lease Rate:	\$3.75 SF/month (NNN)
Property Taxes:	\$0.22 SF/month
OPEX Rate:	\$0.92 SF/month
Available SF:	730 SF
Total Monthly Rent:	\$3,569.70 plus GET
Lease Term:	4 years and 11 months
Annual Increases:	4.5%

**MOE A. SEARS, MBA R(B)** **GRANT E. HOWE, CCIM R(B)**

Realtor® Broker  
808.214.7776  
moe.sears@gmail.com

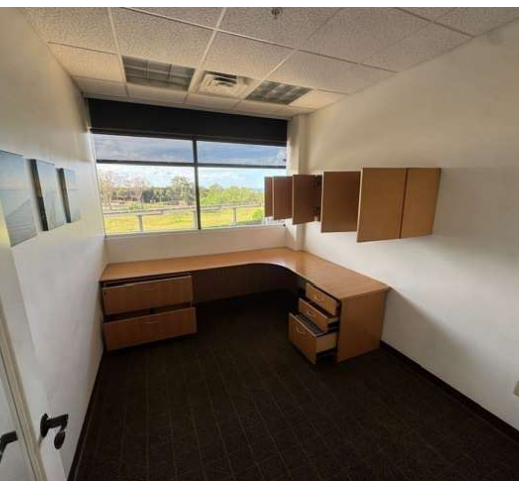
Member / Manager  
808.250.4864  
ghowe@mauibiz.com



COMMERCIAL PROPERTIES  
OF MAUI

# PROFESSIONAL OFFICE SPACE - PARK PLAZA, UNIT P

1300 N Holopono Street, Kihei, HI 96753



**MOE A. SEARS, MBA R(B)**

Realtor® Broker  
808.214.7776  
moe.sears@gmail.com

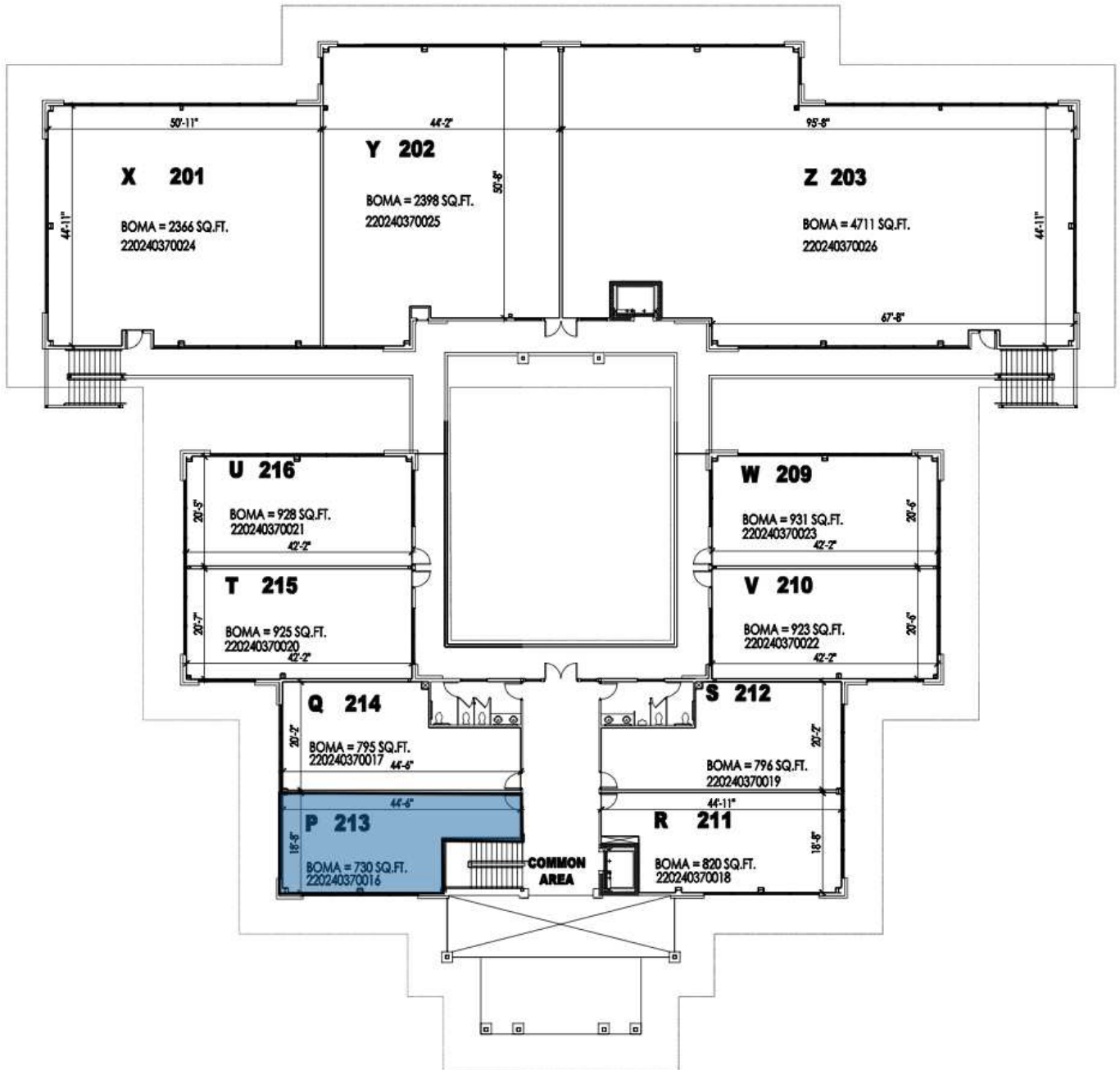
**GRANT E. HOWE, CCIM R(B)**

Member / Manager  
808.250.4864  
ghowe@mauibiz.com



COMMERCIAL PROPERTIES  
OF MAUI

**PROFESSIONAL OFFICE SPACE - PARK PLAZA, UNIT P**  
 1300 N Holopono Street, Kihei, HI 96753



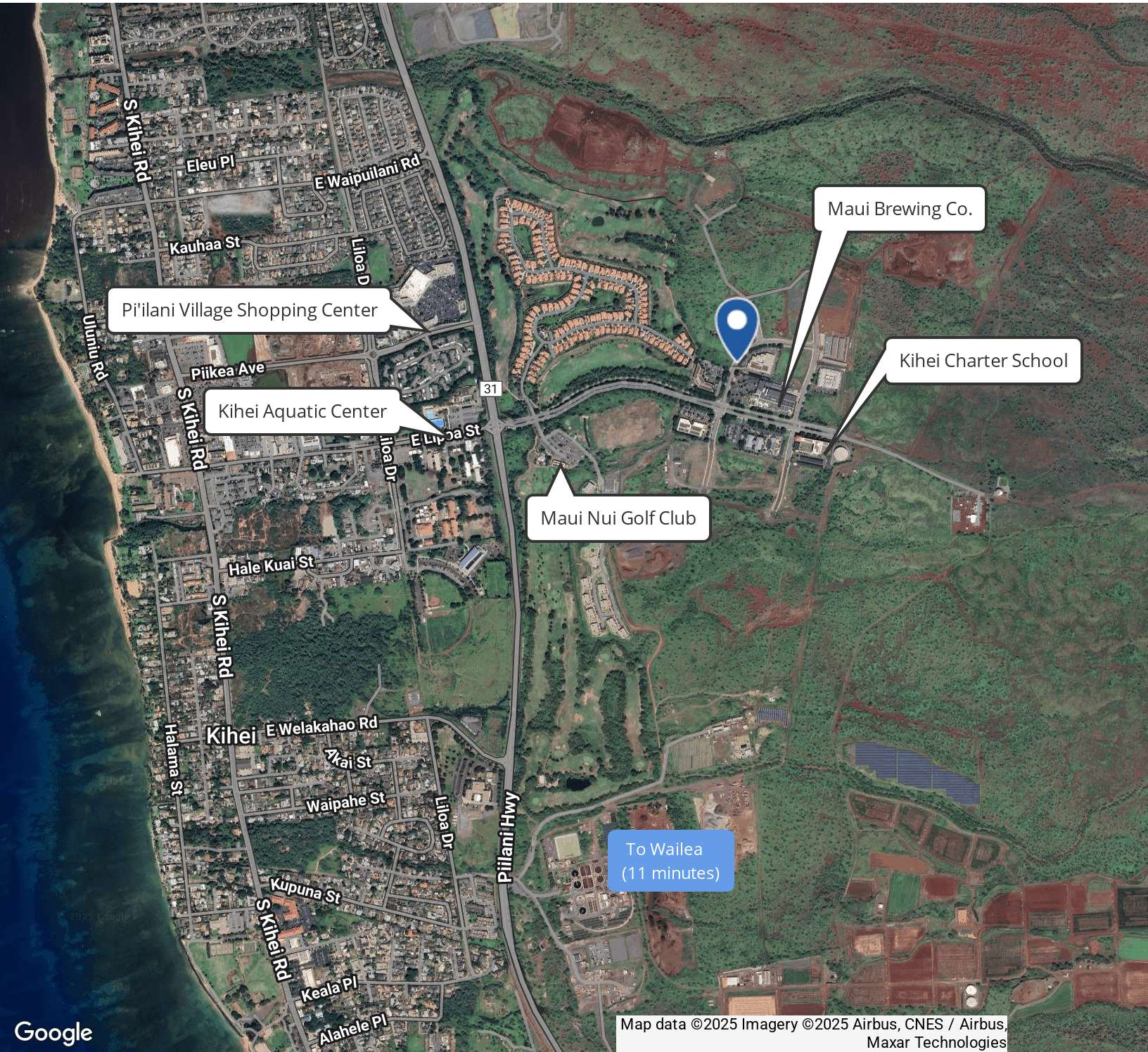
**MOE A. SEARS, MBA R(B) GRANT E. HOWE, CCIM R(B)**

Realtor® Broker  
 808.214.7776  
 moe.sears@gmail.com

Member / Manager  
 808.250.4864  
 ghowe@mauibiz.com



# PROFESSIONAL OFFICE SPACE - PARK PLAZA, UNIT P 1300 N Holopono Street, Kihei, HI 96753



Google

Map data ©2025 Imagery ©2025 Airbus, CNES / Airbus, Maxar Technologies

**MOE A. SEARS, MBA R(B) GRANT E. HOWE, CCIM R(B)**

Realtor® Broker  
808.214.7776  
moe.sears@gmail.com

Member / Manager  
808.250.4864  
ghowe@mauibiz.com



COMMERCIAL PROPERTIES  
OF MAUI