



HDOT Highways Program Status

Project Status (Current and Future Projects) updated nightly



In-Construction

Future Projects

Completed Projects

Pavement Condition

Traffic Volume

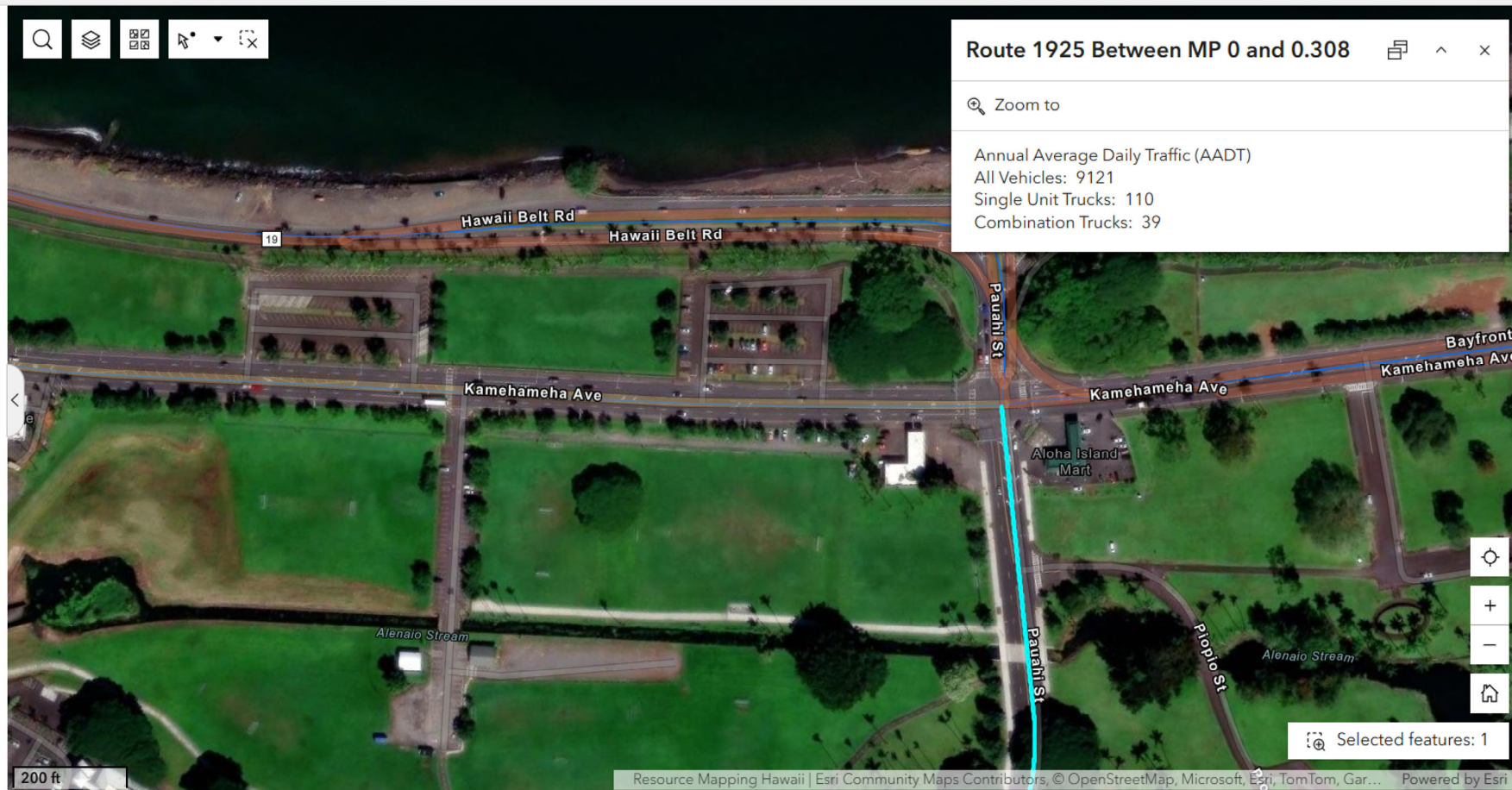
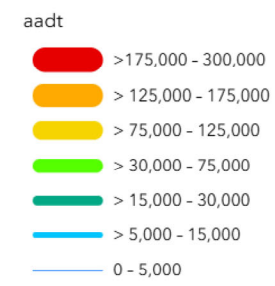
Bridge Priority

Fatal Crash

The annual average daily traffic (AADT) number represents a typical traffic volume number for any day of the year on the segment of interest.

Click on roadway section to get specific Volume for that section of road.

Traffic Volume HPMS 2024



Route 1925 Between MP 0 and 0.308

Zoom to

Annual Average Daily Traffic (AADT)
 All Vehicles: 9121
 Single Unit Trucks: 110
 Combination Trucks: 39

Selected features: 1