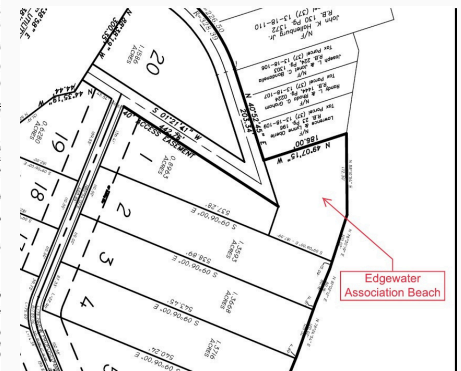
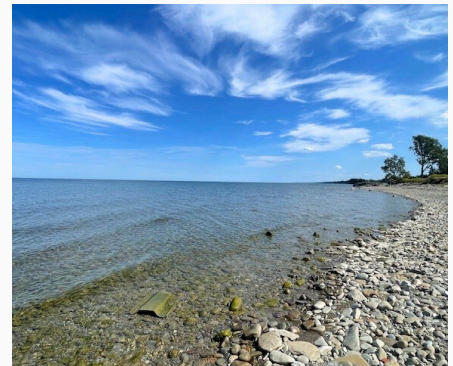
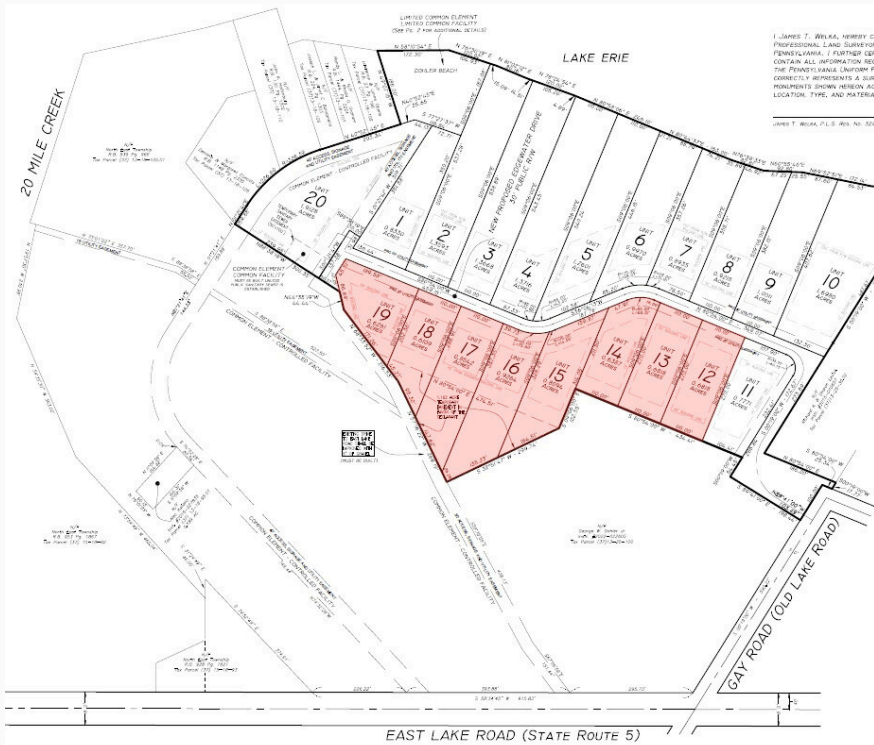




PASSPORT REALTY, LLC
COMMERCIAL REAL ESTATE
SPECIALISTS

\$200,000
PER LAKEVIEW LOT



101-115 Edgewater Drive

Located in beautiful Wine Country, Edgewater on the Beach is the newest private community coming to North East, Pennsylvania. Just off of East Lake Road (State Route 5), eight lakeview lots remain available for development, and the sites are truly shovel ready. All utilities have been installed and are available on the newly cut-in and paved street.

The available lots range from 0.61 to 0.93 acres in size and are truly lakeview allowing lot owners to enjoy a view of glittering Lake Erie. A dedicated private association beach is steps away and available for use by lakeview lot owners.

Featuring

- ✔ 8 Lakeview Lots Available
- ✔ 0.61-0.93 Acre Lots
- ✔ Shovel Ready
- ✔ All Utilities Installed
- ✔ Private Beach Access

Contact Information

- 👤 Gregory J. Rubino
License RS142766A
- ☎ (814) 454-1800
- ✉ grubino@lpassport.com

www.lpassport.com