



OFFICE SUITES FOR LEASE
100 – 35,500 SQUARE FEET AVAILABLE

23300 W. DAVISON STREET

DETROIT, MI

For more information, contact:

JOE STACK

(248) 359 0615

jstack@signatureassociates.com

DRAKE FILIPPIS

(248) 799 3161

dfilippis@signatureassociates.com



**SIGNATURE
ASSOCIATES**

KNOW SIGNATURE | KNOW RESULTS

Information is subject to verification and no liability for errors or omissions is assumed. Price is subject to change and listing withdrawal.



PROPERTY SUMMARY



OFFICE FOR LEASE

- 100 - 35,500 square feet available
- Individual artist/office suites in historic property with an attractive setting
- Church and sanctuary available
- Located on 5.53 acres
- Immediate access to I-96
- Available immediately
- Lease Rate: \$5.00/sq. ft. Gross



KITCHEN SPACE





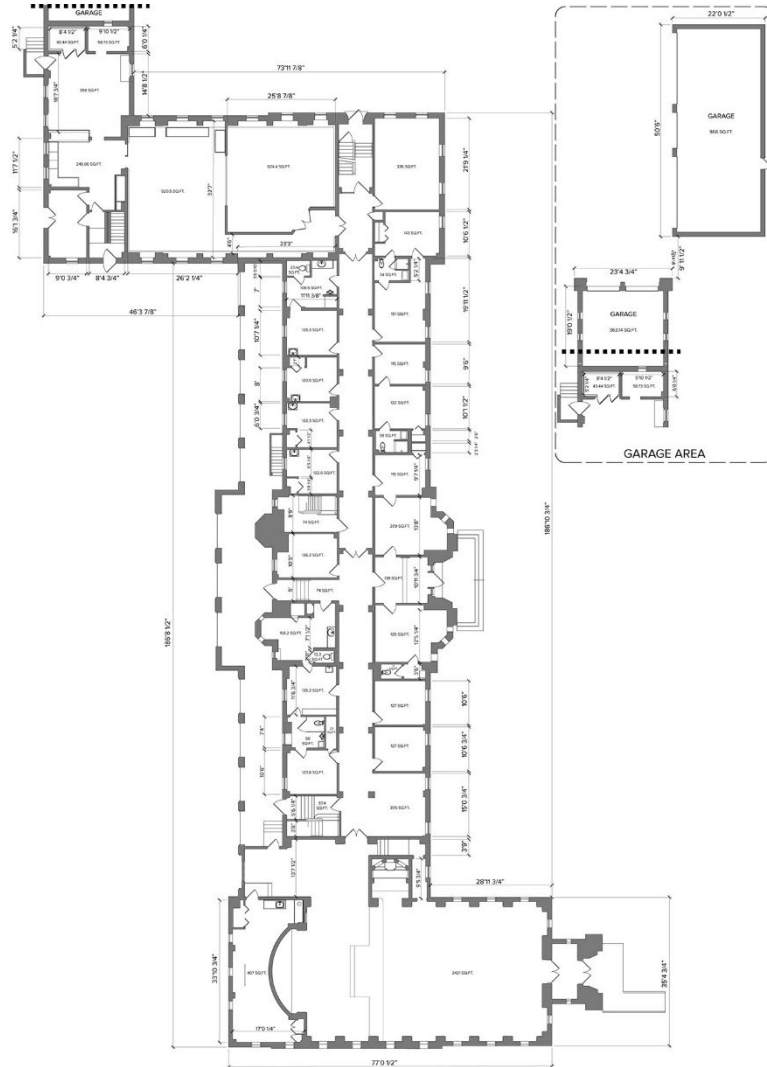
CHURCH SPACE



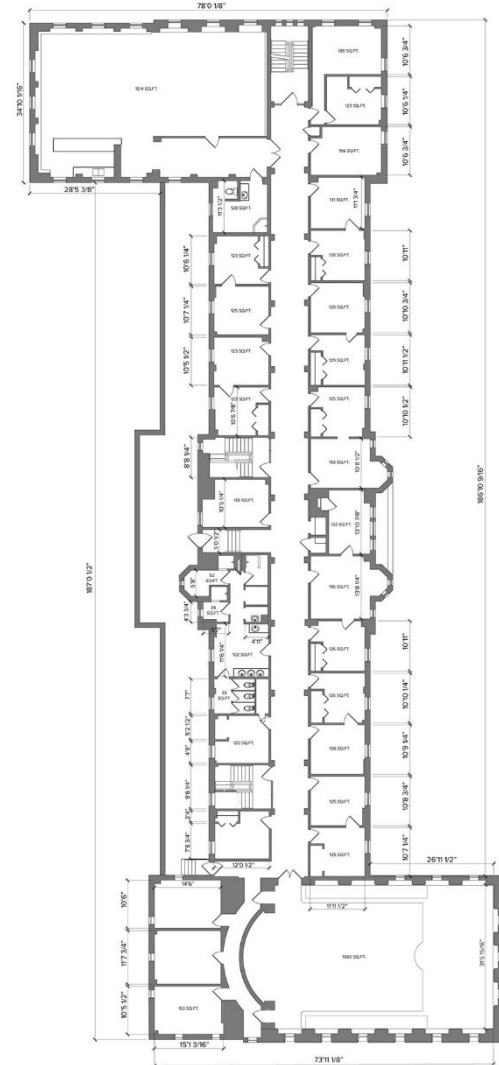


FLOOR PLANS

FIRST FLOOR



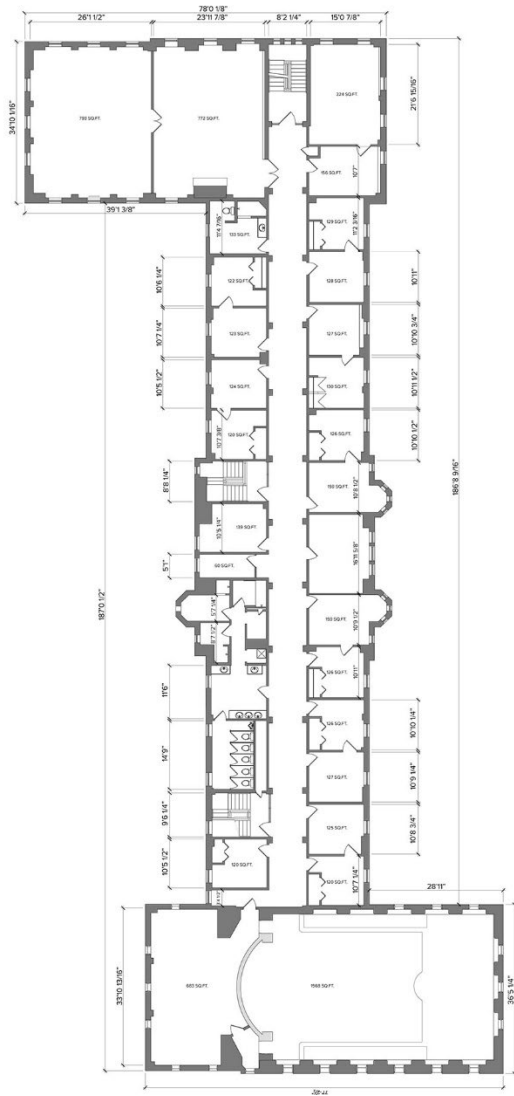
SECOND FLOOR



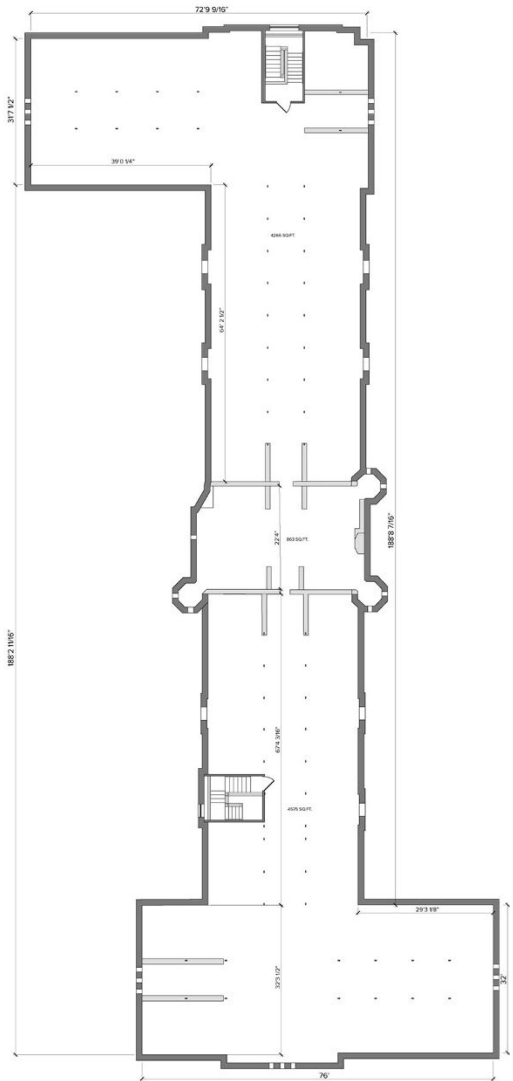


FLOOR PLANS

THIRD FLOOR



ATTIC





FLOOR PLANS - BASEMENT



NORTH



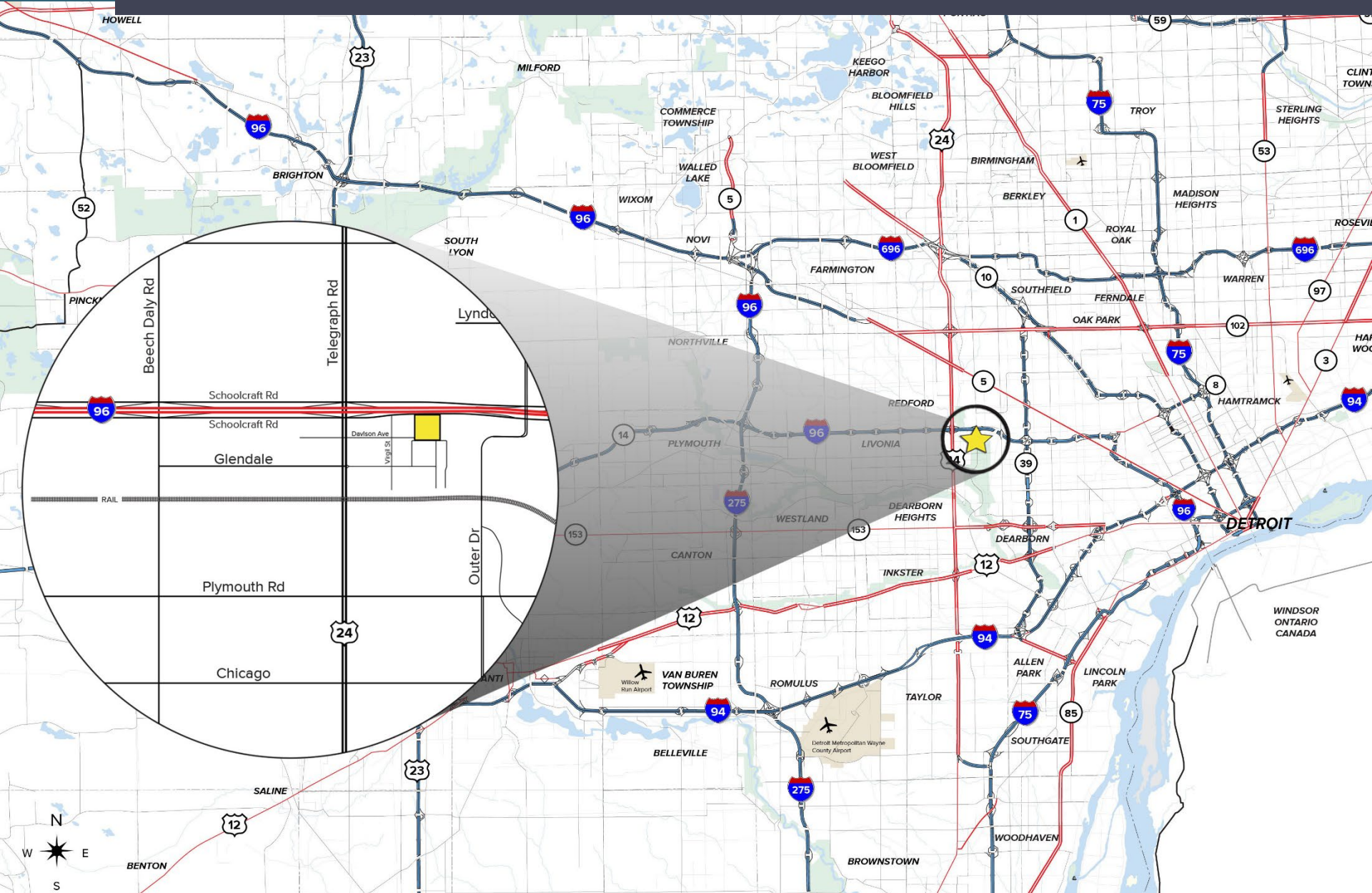
AERIAL VIEW



NORTH



AREA MAP



For more information, contact:

JOE STACK

(248) 799 3161

jstack@signatureassociates.com

DRAKE FILIPPIS

(248) 799 3161

dfilippis@signatureassociates.com

BROKERAGE SERVICES

TENANT REPRESENTATION

INVESTMENT SALES

BUSINESS SALES

VALUATION

ADVISORY SERVICES

PROPERTY/ASSET MANAGEMENT

CONSULTING

MARKET RESEARCH

MARKETING

SIGNATURE ASSOCIATES

One Towne Square, Suite 1200

Southfield, Michigan 48076

(248) 948 9000

www.signatureassociates.com