

# Medford, NY

## 2164 Route 112

Body Shop/Retail Buildings For Sale



### SIZE

2 Buildings,  $\pm 2,250$  SF and  $\pm 3,900$  SF, currently auto body and paint shops

2 Lots totaling 38,333 SF

### ASKING PRICE

\$1,250,000

### TAXES

Approximately \$28,000 per annum

### FRONTAGE

311' on Route 112

### COMMENTS

- Zoned J-2, partial A1
- Located within cluster of Auto Dealerships along Route 112

### DEMOGRAPHICS

2000-2010 Census, 2016 Estimates

	1 Mile	3 Miles	5 Miles
Population	6,168	74,504	198,242
Household	1,957	25,264	68,558
Median Household Income	\$91,735	\$86,725	\$86,662
Daytime Population	3,027	31,215	77,483

Contact Our Exclusive Agent:

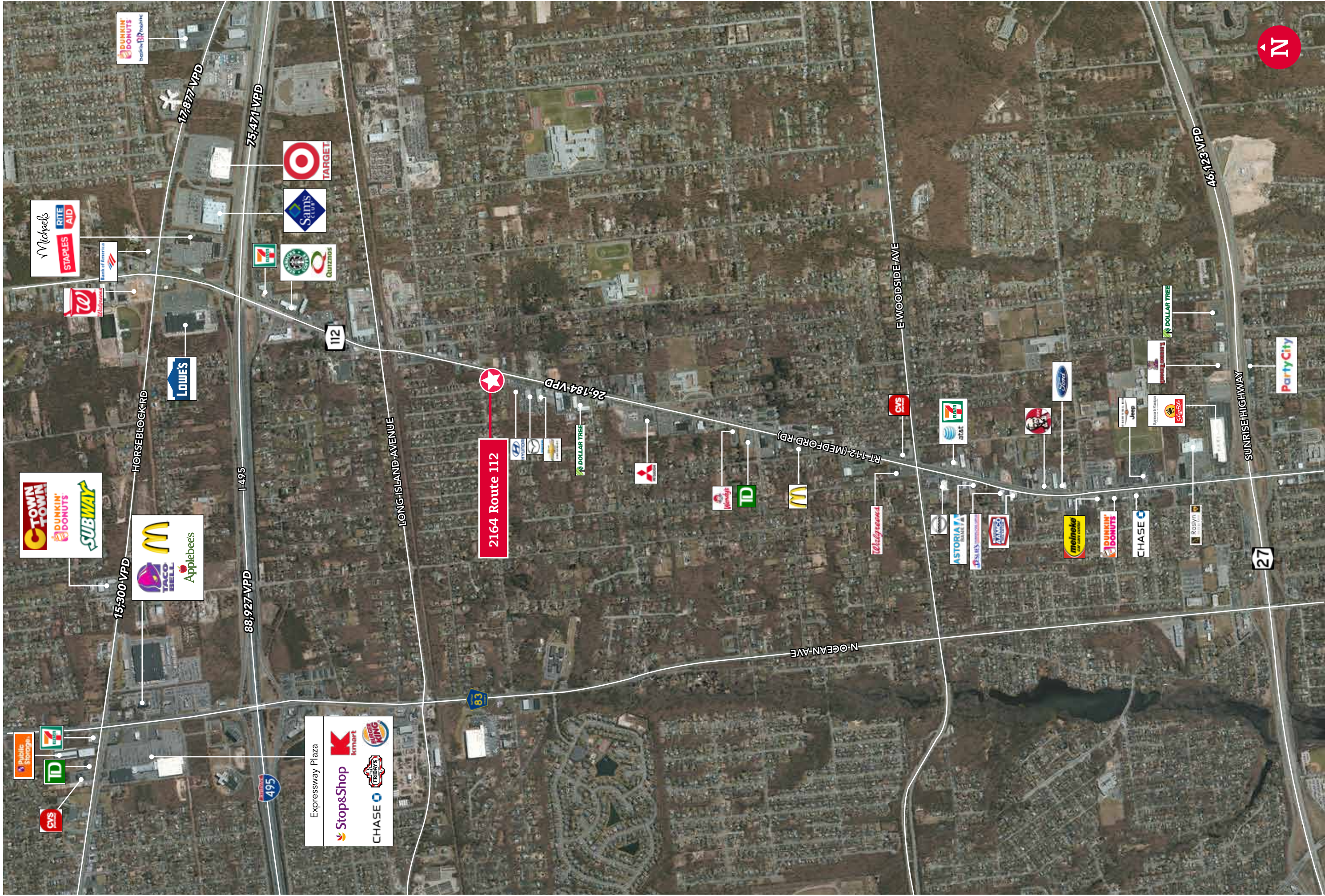
**Robert Brennan**

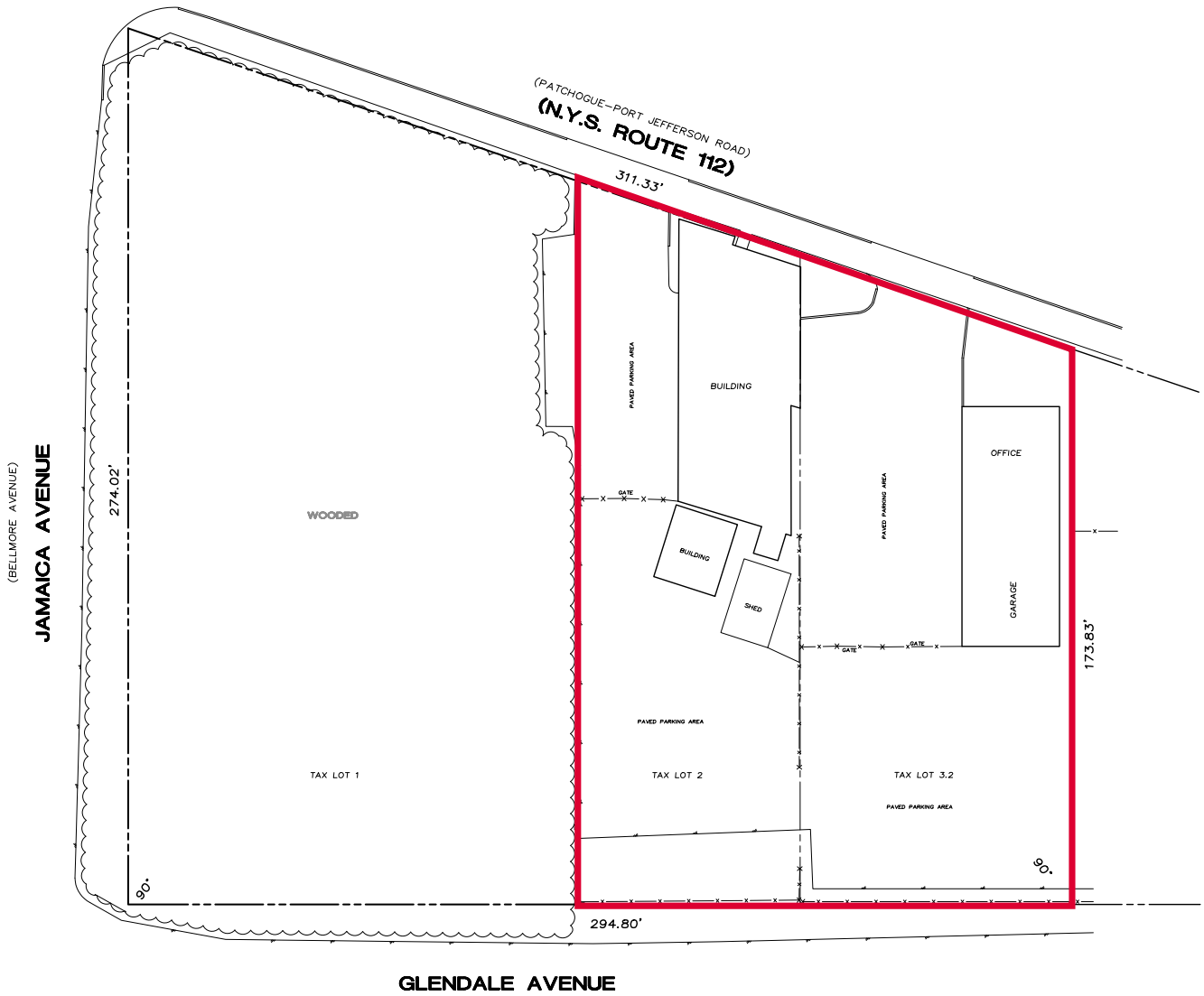
rbrennan@ripcony.com

516.933.8880

**Ripco**  
REAL ESTATE







**MANHATTAN**

150 East 58<sup>th</sup> Street  
15<sup>th</sup> Floor  
New York, NY 10155

T. 212.750.6565  
F. 212.750.6767

**LONG ISLAND**

100 Jericho Quadrangle  
Suite 120  
Jericho, NY 11753

T. 516.933.8880  
F. 516.933.2514

**NEW JERSEY**

125 Chubb Avenue  
Suite 150S  
Lyndhurst, NJ 07071

T. 201.777.2300  
F. 201.777.2314

**BROOKLYN**

32 Court Street  
10<sup>th</sup> Floor  
Brooklyn, NY 11201

T. 718.233.6565  
F. 718.663.2660

**Proudly serving**

Long Island  
New Jersey  
New York City  
Westchester  
Rockland  
Connecticut

[www.ripcony.com](http://www.ripcony.com)

\*All information is from sources deemed reliable and is submitted subject to errors, omissions, change of price, terms, rental prior sale and withdrawal notices.