

MEDICAL/OFFICE SPACE

FOR LEASE

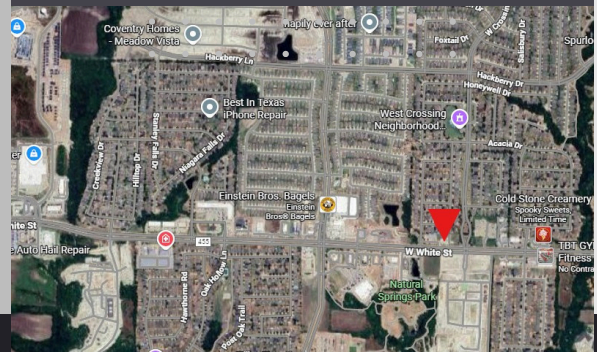
Prime Location!



FEATURES & BENEFITS:

- High Visibility on White St.
- Modern Facilities
- Prime Location in Fast Growing Anna
- New Construction Shell Space
- Flexible Suite Layout: 2,000-5,000 SF

*Lease Rate: \$25-\$27/SF
+\$.50 NNN
TI Allowance: \$35/SF*



CONTACT US:

Contact us now to schedule a tour or
learn more about our available options

C & E JACKMAN REALTY, LLC

Phone: 801-691-4732

Email: emily_jackman@hotmail.com