



FOR LEASE

OFFICE SPACE

Property Highlights

- 4,315 ± SF available
- \$21.00/SF MG
- Amenities include an on-site fitness center, mother's room, and bike storage
- Steps away from Osage Park's trails, food trucks, pickleball courts, dog parks, and more
- Less than 1.5 miles from the New Walmart Home Office and Sam's Club HQ
- Parking Ratio 4/1000

*information deemed reliable but not guaranteed

For more information, please contact:

Stephanie Farmer

+1 479 845 3022

sfarmer@sagepartners.com

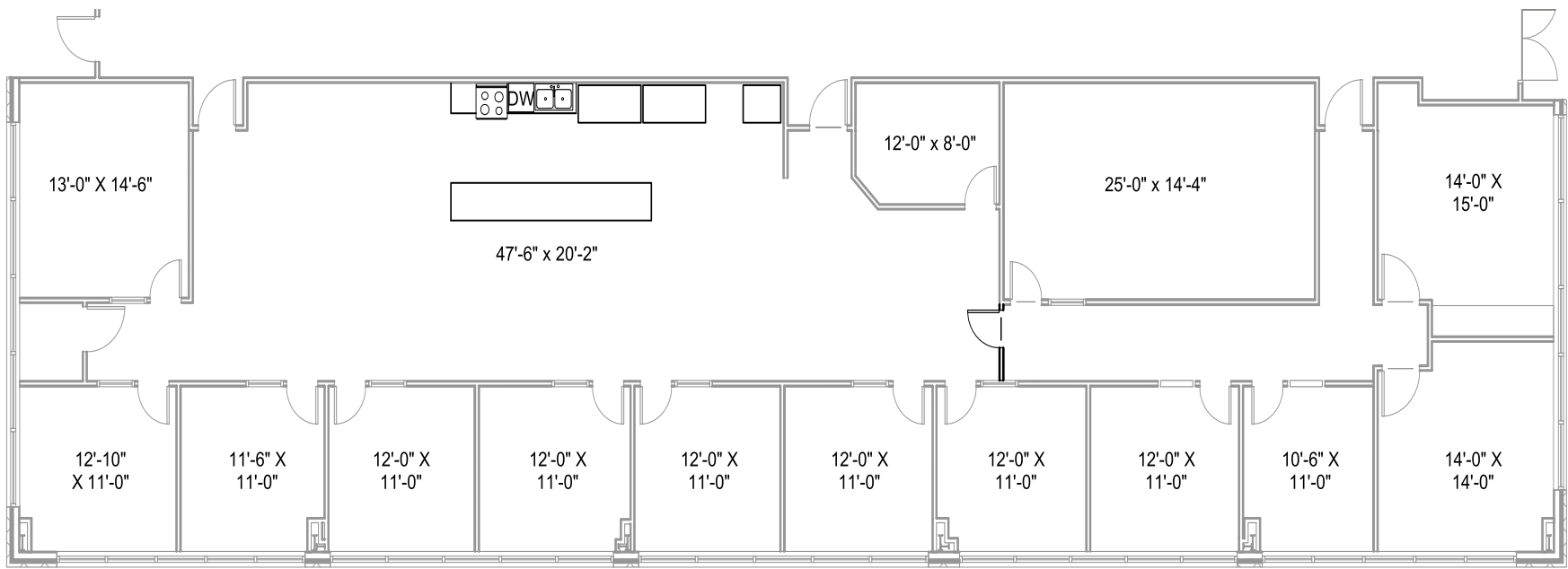
Olivia Funderburk

+1 417 818 6875

ofunderburk@sagepartners.com

479 845 3000

sagepartners.com



1 1710 COMMERCE DR - FLOOR PLAN
1" = 10'-0"

SUITE 24



