



KENT BUSINESS
CAMPUS

8 2 7 - 8 4 1 C E N T R A L A V E N | K E N T , W A 9 8 0 3 2

827 - 841 CENTRAL AVE N
KENT, WA 98032



498-3,527 SF

OFFICE SPACE AVAILABLE

CALL

FOR RATES



133k
TOTAL
POPULATION

104k
DAYTIME
POPULATION

\$133k
AVG. HOUSEHOLD
INCOME

6.5k
BUSINESSES

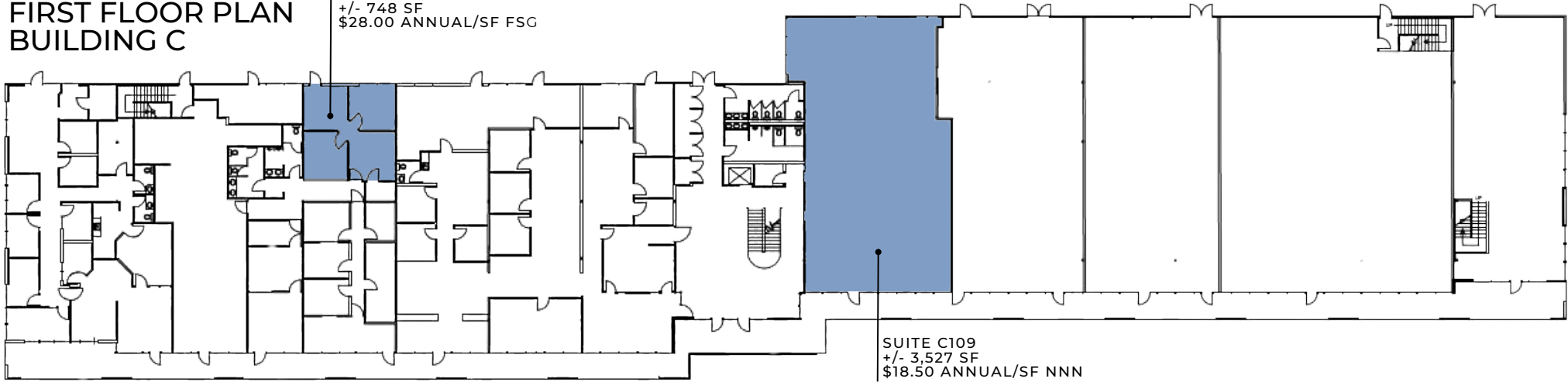
64%
ADULTS WITH
COLLEGE EDUCATION

66k
EMPLOYEES

*2024 PROJECTIONS FOR KENT, WA. COLLECTED VIA SITESUSA

FIRST FLOOR PLAN BUILDING C

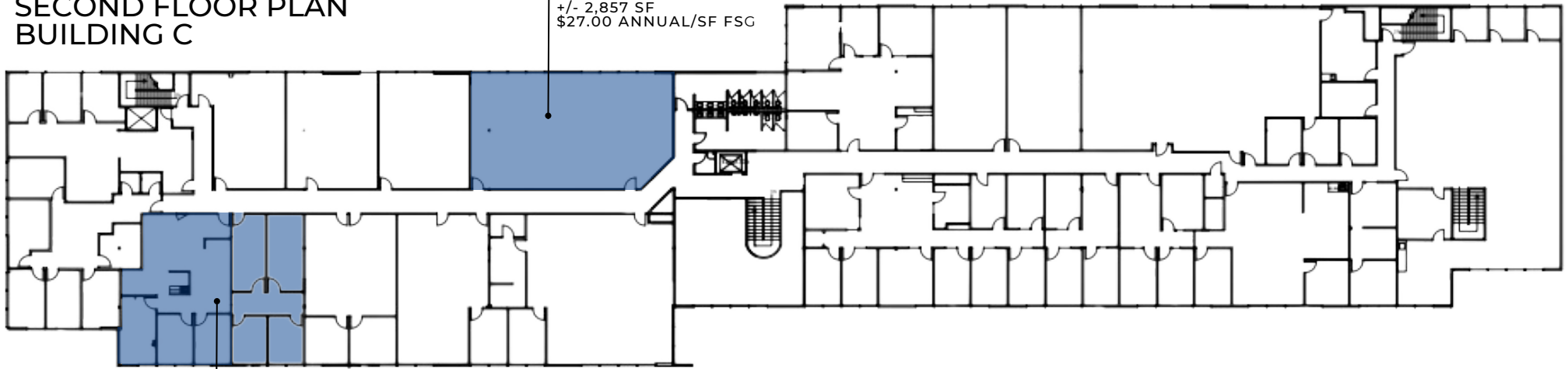
SUITE C132
+/- 748 SF
\$28.00 ANNUAL/SF FSG



SUITE C109
+/- 3,527 SF
\$18.50 ANNUAL/SF NNN

SECOND FLOOR PLAN BUILDING C

SUITE C215
+/- 2,857 SF
\$27.00 ANNUAL/SF FSG



SUITE C206
+/- 2,358 SF
\$27.00 ANNUAL/SF FSG

Quality office space with abundant parking and monument signage available on Central Ave



SEA Seattle-Tacoma International Airport

HOBBY LOBBY **Value Village** **BEST BUY**
TARGET **Michaels** **PET SMART** **ULTA**
BARNES & NOBLE **BOOKS** **Total Wine** **DISCS**
DOLLAR TREE **BeVMo!**

Lowe's **REI**
Books *...* *...*

Walmart
DOLLAR TREE
Dutch Bros

Fred Meyer
Costa

WALMART
UWAIWAYA
Applebee's

INTERSTATE 5

INTERSTATE 405

Costco

IKEA

HARBOR FREIGHT
RANCH MART

Lowe's



ShowWare

BIG LOTS

KENT STATION

amc DAIISO

LOP

SAFEWAY

GROCERY OUTLET
Ranch Mart

Fred Meyer
MUDBAY

Value Village
ihop



ADAM GREENBERG

SENIOR VICE PRESIDENT | PARTNER
ADAM@PAADVISORS.COM

425.503.1339



TYSON CLARKE

SENIOR VICE PRESIDENT | PARTNER
TYSON@PAADVISORS.COM

360.319.4855