



Moses Tucker
PARTNERS

Little Rock (HEADQUARTERS)
200 River Market Ave, Suite 300
Little Rock, AR 72201
501.376.6555

Bentonville (BRANCH)
805 S Walton Blvd, Suite 123
Bentonville, AR 72712
479.271.6118



RETAIL SPACE FOR LEASE
The Village at Heritage, Fort Smith, AR

CONTACT US TODAY
501.376.6555 | mosestucker.com



Chaffee Crossing is Fort Smith's premier economic development project with over \$2.4 billion in capital improvement since its inception. Filled with businesses, industry, revitalized historic buildings, and new residential construction, Chaffee Crossing is a rapidly growing community. Click [HERE](#) to see the Chaffee Crossing developments.

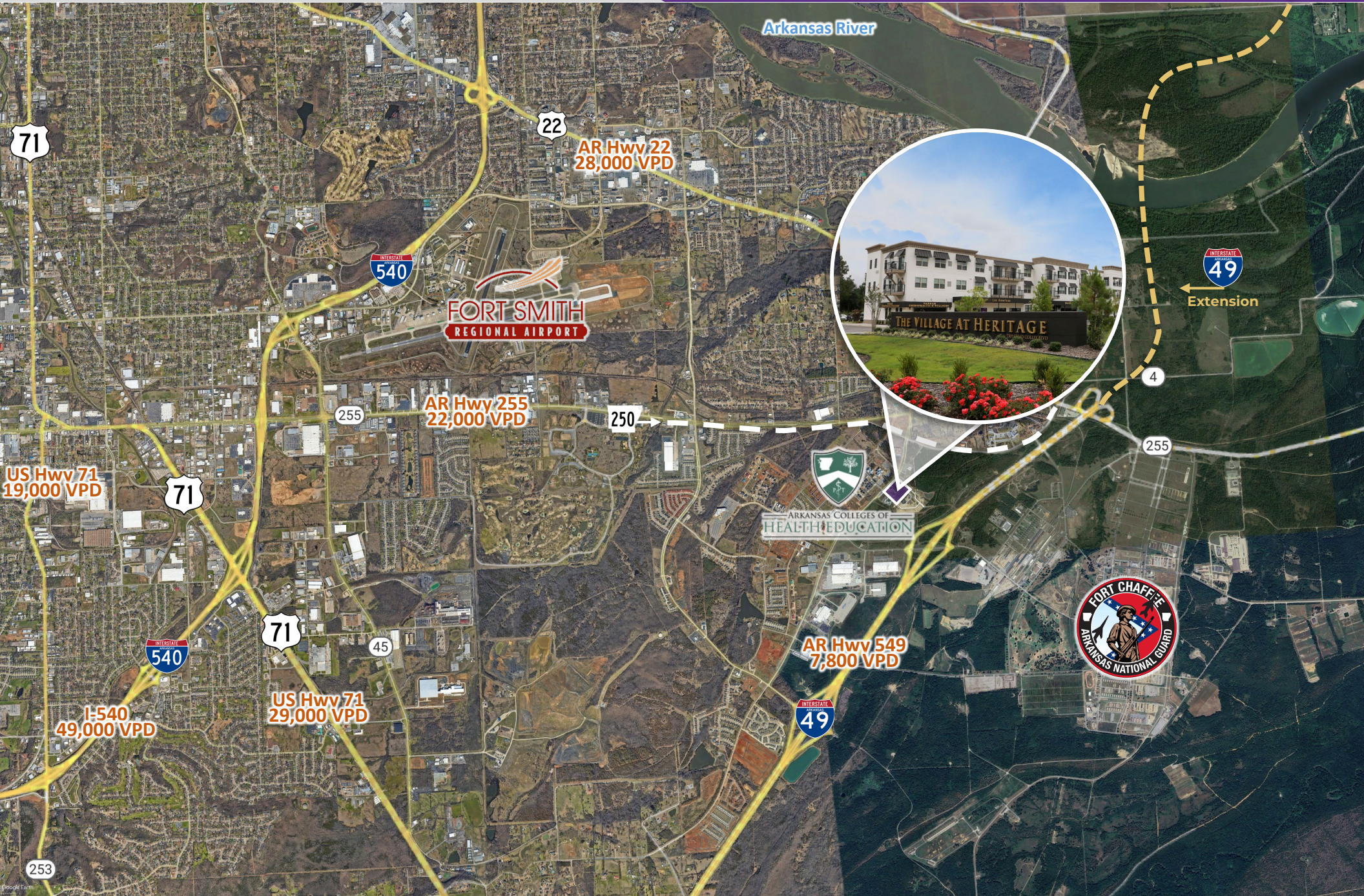
OFFERING SUMMARY

Available Space	<ul style="list-style-type: none"> o ±1,990 SF Retail Space (Bldg B) o ±4,677 SF Restaurant Space (Bldg B)
Lease Rate	\$14.00/SF & \$16.00/SF
Lease Type	NNN
CAM	\$3.00/SF
TI Allowance	Negotiable

PROPERTY HIGHLIGHTS

- o Located across the street from Arkansas Colleges of Health Education's main campus (approximately 1,000 students)
- o Last available restaurant space in this development
- o Access to grease trap, vent hood, and walk-in coolers for restaurant space
- o Easy access to I-49, Hwy 255 and Hwy 22
- o Attractive Rent Rate
- o Adjacent to Celebration Park and future trail system

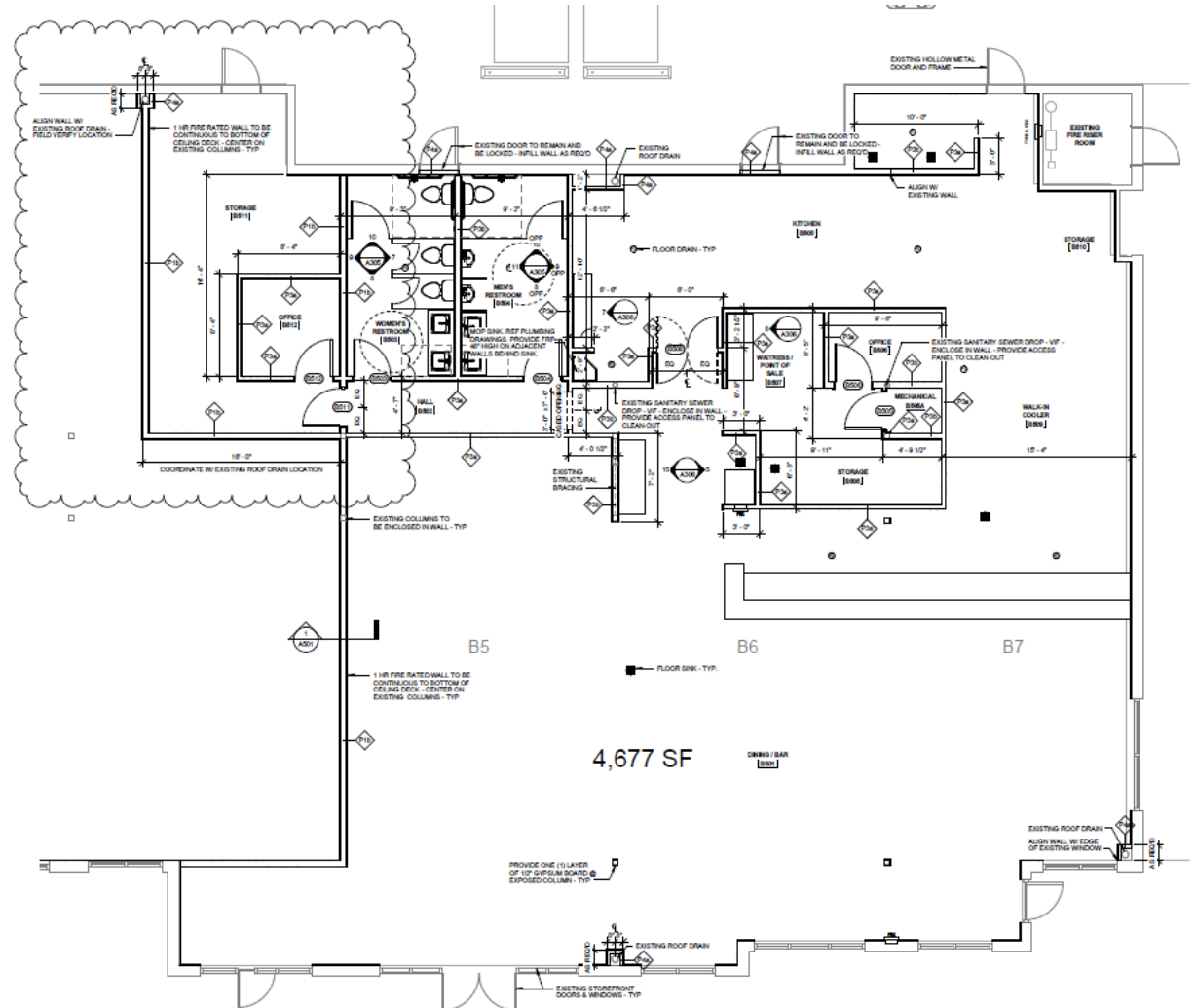


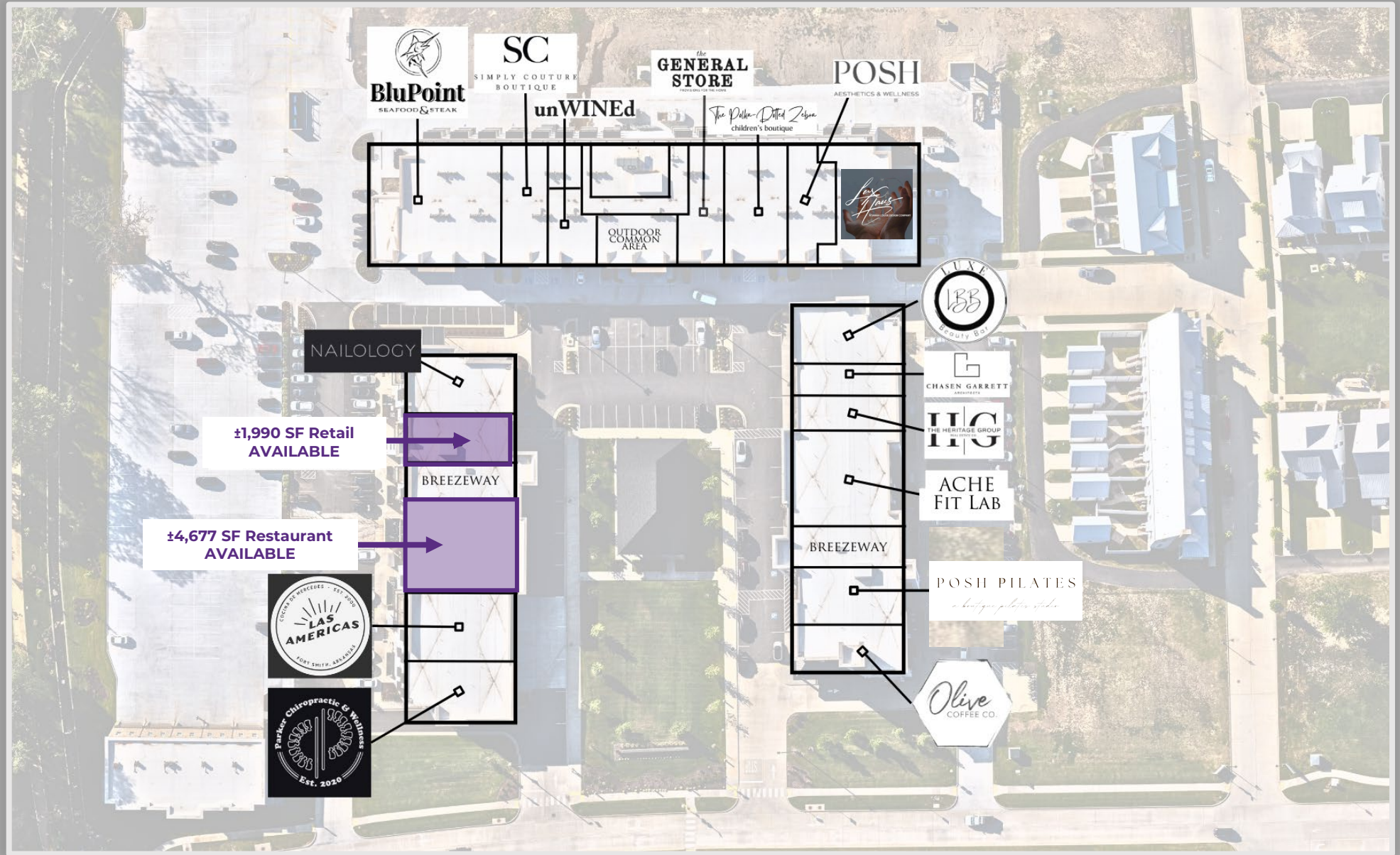


Available Space – Building B

1st Floor Restaurant Space

Available Space	Suite A
Size (SF)	± 4,677 SF
Lease Type	NNN
Lease Rate	\$14.00/SF
Notes	Turnkey 2 nd Generation restaurant opportunity with furniture equipment available. Includes additional patio space. Full-service kitchen with 26' vent hood, two walk-in coolers, ADA bathrooms, additional office/storage areas, and full bar area.











Fort Smith, AR



Spanning more than 68 square miles of River Valley farmland, Fort Smith is the largest city in Western Arkansas and ranks as the state's third-largest populated city. Nearly 90,000 people proudly call Fort Smith home, and nearly 300,000 residents of the surrounding metropolitan region look to Fort Smith for shopping, entertainment, employment, education, healthcare, and more.

In Fort Smith, the quality of life is high, and the cost of doing business is low. In 2019, Forbes ranked Fort Smith 8th in the nation's "Best Places in America – Cost of Doing Business." Over 11,000 companies choose to do business in Fort Smith,

Fort Smith supports exceptional education and learning opportunities for all residents. The city is home to several colleges and universities, as well as one of the largest K-12 school districts in Arkansas. In Fort Smith, no resident is more than 2 ½ miles from a library where extensive technology offerings are available. Fort Smith is also home to many museums, performing art venues, and visual art experiences. In 2007, Fort Smith was selected as the site of the new United States Marshals Museum, which was brought to life through the private donations of community members.

DEMOGRAPHICS*

Population

3 MILES

16,631

5 MILES

38,406

10 MILES

141,911

Households

7,245

16,543

56,722

Average Age

40.8

41.5

39.6

Average Household Income

\$89,772

\$108,298

\$79,878

Businesses


568

1,672

4,493

**Demographic details based on property location*

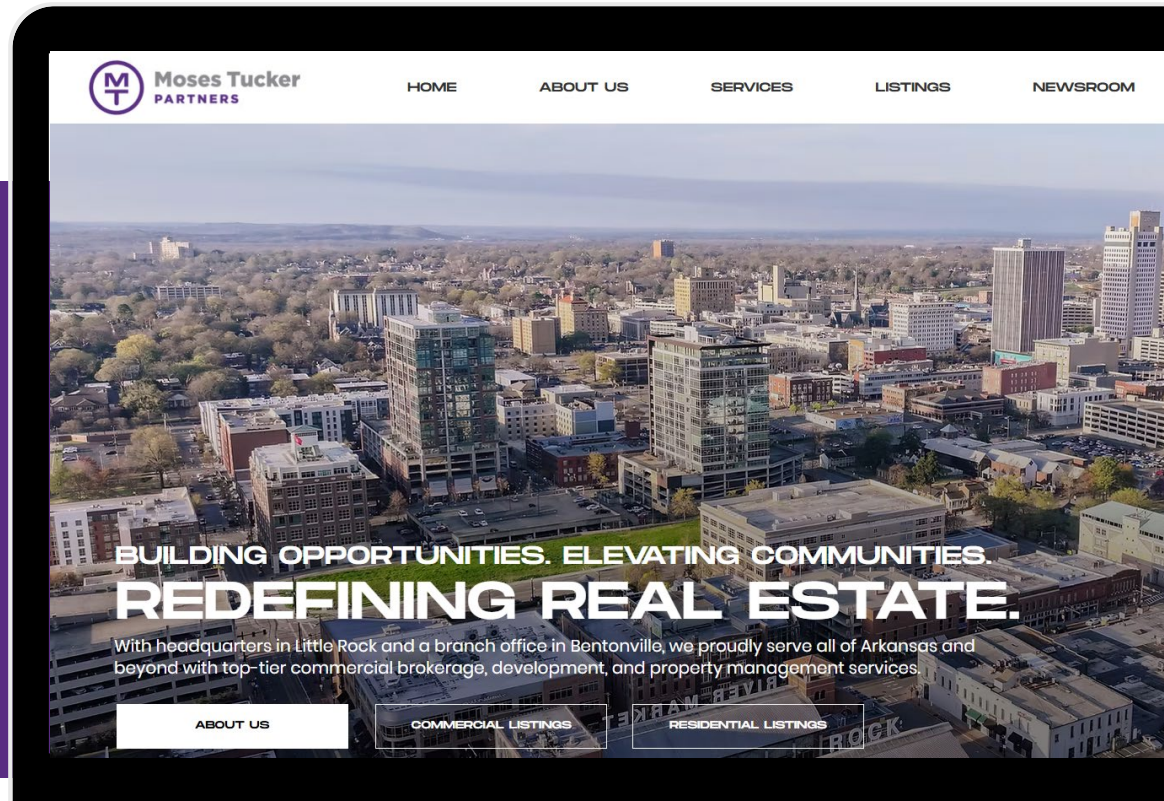
CONNECT

 (479) 271-6118

 www.mosestucker.com

 info@mosestucker.com

 805 S Walton Blvd, Suite 123,
Bentonville, AR 72712



Eric Nelson

Principal & Vice President of Brokerage

501.951.1802

enelson@mosestucker.com

Matt Beachboard

Brokerage Director

501.993.1576

mbeachboard@mosestucker.com

DISCLAIMER

Moses Tucker Partners represents the owner of the property represented herein. Although all information furnished regarding property for sale, rental, or financing is from sources deemed reliable, such information has not been verified and no express representation is made nor is any to be implied as to the accuracy thereof and it is submitted subject to errors, omissions, change of price, rental or other conditions, prior sale, lease or financing, or withdrawal without notice and to any special conditions imposed by our principal.