

# 15147 WOODLAWN AVENUE

Tustin, CA 92780



OFFICE SUBLEASE | AVAILABLE IMMEDIATELY

**2,500 RSF**

**WILL TOBER** | Senior Managing Director  
949.333.3111 | [will@hughesmarino.com](mailto:will@hughesmarino.com)

**HUGHES**MARINO

# BUILDING INFORMATION



## **BUILDING**

Pacific Business Center

## **ADDRESS**

15147 Woodlawn Avenue,  
Tustin, CA 92780

## **AVAILABLE**

Immediately

## **ASKING RATE**

\$2.50/MG

## **AVAILABLE THROUGH**

Negotiable

## **ADDITIONAL FEATURES**

- Free Parking
- Newly renovated common areas

# LOCATION HIGHLIGHTS



**FREWAY  
ACCESS**



**RETAIL &  
RESTAURANTS**



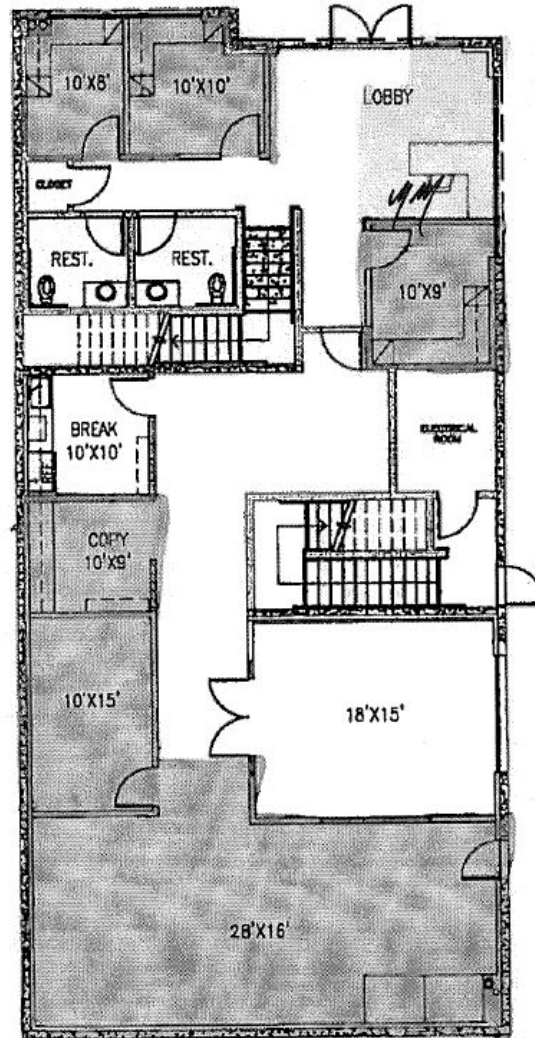
**HEALTH CLUB**



## KEY HIGHLIGHTS

- Excellent access to 55 and 5 freeways
- Abundant retail, restaurant, and other amenities nearby
- Minutes from Tustin Legacy
- Less than 10 Minutes from John Wayne Airport

# FLOOR PLAN



## SPACE HIGHLIGHTS

- 3 private window offices and 1 large interior office available
- Up to 6 workstations
- Shared areas include reception, kitchen, lounge, and copy/printer area

15147 WOODLAWN AVENUE



15147 WOODLAWN AVENUE



# CONTACT INFORMATION



**WILL TOBER**

[will@hughesmarino.com](mailto:will@hughesmarino.com)

949.333.3111

Broker Lic. #02001182

**2 PARK PLAZA, SUITE 750, IRVINE, CA 92614**

949.333.3111 | [hughesmarino.com](http://hughesmarino.com)

**HUGHESMARINO**