

Home data report

25 Crossing Lane, East Lexington, Lexington, Rockbridge County, Virginia, United States, 24450, 1



Total Area: 3922 sq. ft

1st Floor: 3922 sq. ft

Excluded: Storage 251 sq. ft, Walls: 158 sq. ft

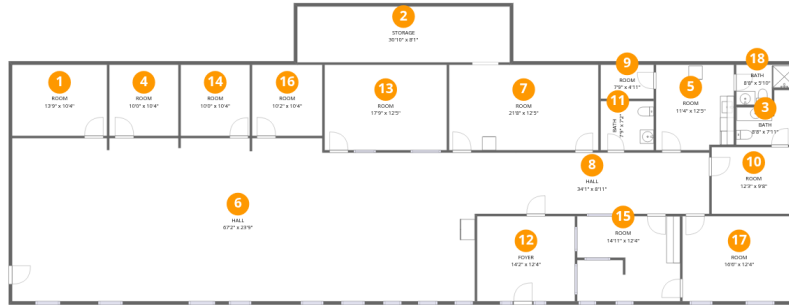
Property summary

 **1** Floors

 **1** Bathrooms

 **2** Half baths

25 Crossing Lane, East Lexington, Lexington, Rockbridge County, Virginia, United States, 24450, 1



Room dimensions

Floor 1

Total:3922sqft Excluded: 251sqft

#		Dimensions	sqft	Counted as living area
1	Room	13'9" x 10'4"	142 sq. ft	Yes
2	Storage	30'10" x 8'1"	251 sq. ft	No
3	Bath	8'8" x 7'11"	55 sq. ft	Yes
4	Room	10'0" x 10'4"	104 sq. ft	Yes
5	Room	11'4" x 12'5"	138 sq. ft	Yes
6	Hall	67'2" x 23'9"	1545 sq. ft	Yes
7	Room	21'8" x 12'5"	269 sq. ft	Yes
8	Hall	34'1" x 8'11"	304 sq. ft	Yes
9	Room	7'9" x 4'11"	38 sq. ft	Yes
10	Room	12'3" x 9'8"	119 sq. ft	Yes
11	Bath	7'9" x 7'2"	55 sq. ft	Yes

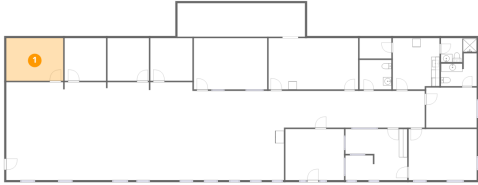
Home data report

**25 Crossing Lane, East Lexington, Lexington, Rockbridge
County, Virginia, United States, 24450, 1**

#		Dimensions	sqft	Counted as living area
12	Foyer	14'2" x 12'4"	176 sq. ft	Yes
13	Room	17'9" x 12'5"	221 sq. ft	Yes
14	Room	10'0" x 10'4"	104 sq. ft	Yes
15	Room	14'11" x 12'4"	182 sq. ft	Yes
16	Room	10'2" x 10'4"	105 sq. ft	Yes
17	Room	16'6" x 12'4"	204 sq. ft	Yes
18	Bath	8'8" x 5'10"	42 sq. ft	Yes

25 Crossing Lane, East Lexington, Lexington, Rockbridge County, Virginia, United States, 24450, 1

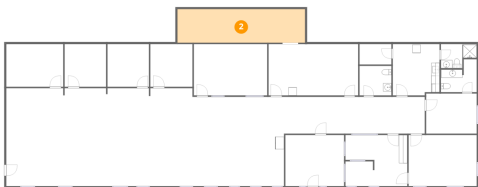
1 Floor 1 - Room



Dimensions: 13'9" x 10'4"
Area: 142 sq. ft
Counted as living area: Yes

Heated: Yes
Finished: Yes
Enclosed: Yes
Contiguous: Yes
Permitted: Yes
Wet space: No
Addition: No
Conversion: No

2 Floor 1 - Storage

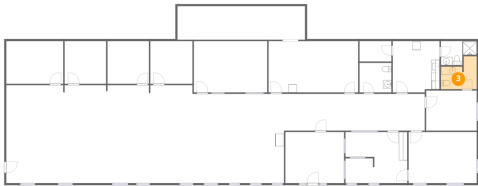


Dimensions: 30'10" x 8'1"
Area: 251 sq. ft
Counted as living area: No

Heated: No
Finished: No
Enclosed: No
Contiguous: Yes
Permitted: Yes
Wet space: No
Addition: No
Conversion: No

25 Crossing Lane, East Lexington, Lexington, Rockbridge County, Virginia, United States, 24450, 1

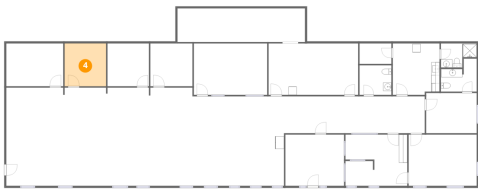
3 Floor 1 - Bath



Dimensions: 8'8" x 7'11"
Area: 55 sq. ft
Counted as living area: Yes

Heated: Yes
Finished: Yes
Enclosed: Yes
Contiguous: Yes
Permitted: Yes
Wet space: Yes
Addition: No
Conversion: No

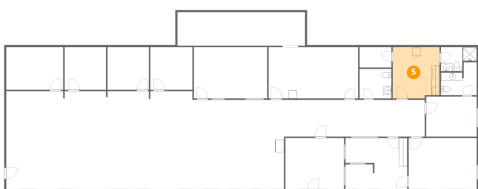
4 Floor 1 - Room



Dimensions: 10'0" x 10'4"
Area: 104 sq. ft
Counted as living area: Yes

Heated: Yes
Finished: Yes
Enclosed: Yes
Contiguous: Yes
Permitted: Yes
Wet space: No
Addition: No
Conversion: No

5 Floor 1 - Room

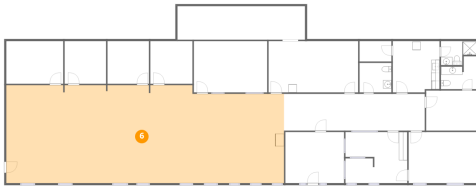


Dimensions: 11'4" x 12'5"
Area: 138 sq. ft
Counted as living area: Yes

Heated: Yes
Finished: Yes
Enclosed: Yes
Contiguous: Yes
Permitted: Yes
Wet space: No
Addition: No
Conversion: No

25 Crossing Lane, East Lexington, Lexington, Rockbridge County, Virginia, United States, 24450, 1

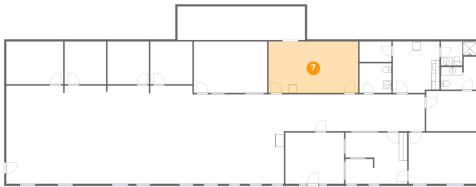
6 Floor 1 - Hall



Dimensions: 67'2" x 23'9"
Area: 1545 sq. ft
Counted as living area: Yes

Heated: Yes
Finished: Yes
Enclosed: Yes
Contiguous: Yes
Permitted: Yes
Wet space: No
Addition: No
Conversion: No

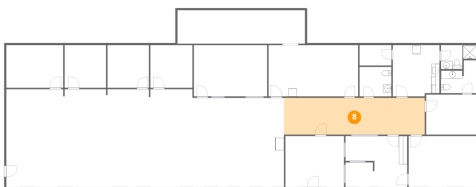
7 Floor 1 - Room



Dimensions: 21'8" x 12'5"
Area: 269 sq. ft
Counted as living area: Yes

Heated: Yes
Finished: Yes
Enclosed: Yes
Contiguous: Yes
Permitted: Yes
Wet space: No
Addition: No
Conversion: No

8 Floor 1 - Hall

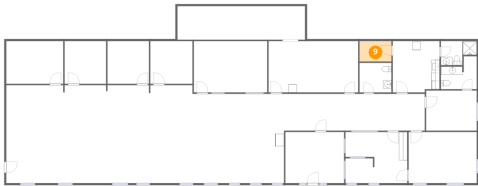


Dimensions: 34'1" x 8'11"
Area: 304 sq. ft
Counted as living area: Yes

Heated: Yes
Finished: Yes
Enclosed: Yes
Contiguous: Yes
Permitted: Yes
Wet space: No
Addition: No
Conversion: No

25 Crossing Lane, East Lexington, Lexington, Rockbridge County, Virginia, United States, 24450, 1

9 Floor 1 - Room



Dimensions: 7'9" x 4'11"
Area: 38 sq. ft
Counted as living area: Yes

Heated: Yes
Finished: Yes
Enclosed: Yes
Contiguous: Yes
Permitted: Yes
Wet space: No
Addition: No
Conversion: No

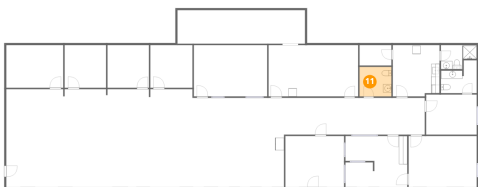
10 Floor 1 - Room



Dimensions: 12'3" x 9'8"
Area: 119 sq. ft
Counted as living area: Yes

Heated: Yes
Finished: Yes
Enclosed: Yes
Contiguous: Yes
Permitted: Yes
Wet space: No
Addition: No
Conversion: No

11 Floor 1 - Bath

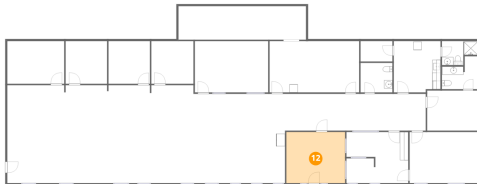


Dimensions: 7'9" x 7'2"
Area: 55 sq. ft
Counted as living area: Yes

Heated: Yes
Finished: Yes
Enclosed: Yes
Contiguous: Yes
Permitted: Yes
Wet space: Yes
Addition: No
Conversion: No

25 Crossing Lane, East Lexington, Lexington, Rockbridge County, Virginia, United States, 24450, 1

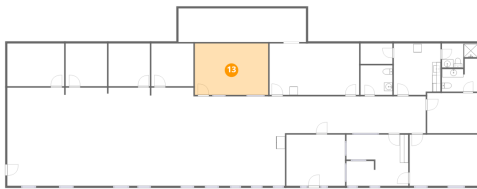
12 Floor 1 - Foyer



Dimensions: 14'2" x 12'4"
Area: 176 sq. ft
Counted as living area: Yes

Heated: Yes
Finished: Yes
Enclosed: Yes
Contiguous: Yes
Permitted: Yes
Wet space: No
Addition: No
Conversion: No

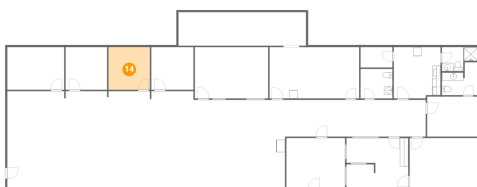
13 Floor 1 - Room



Dimensions: 17'9" x 12'5"
Area: 221 sq. ft
Counted as living area: Yes

Heated: Yes
Finished: Yes
Enclosed: Yes
Contiguous: Yes
Permitted: Yes
Wet space: No
Addition: No
Conversion: No

14 Floor 1 - Room

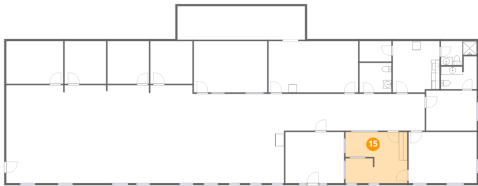


Dimensions: 10'0" x 10'4"
Area: 104 sq. ft
Counted as living area: Yes

Heated: Yes
Finished: Yes
Enclosed: Yes
Contiguous: Yes
Permitted: Yes
Wet space: No
Addition: No
Conversion: No

25 Crossing Lane, East Lexington, Lexington, Rockbridge County, Virginia, United States, 24450, 1

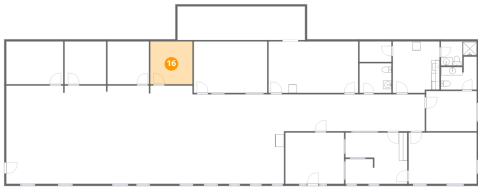
15 Floor 1 - Room



Dimensions: 14'11" x 12'4"
Area: 182 sq. ft
Counted as living area: Yes

Heated: Yes
Finished: Yes
Enclosed: Yes
Contiguous: Yes
Permitted: Yes
Wet space: No
Addition: No
Conversion: No

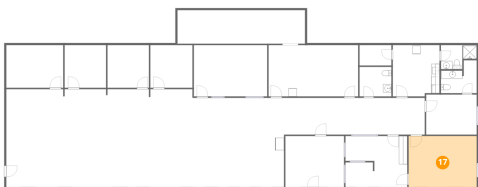
16 Floor 1 - Room



Dimensions: 10'2" x 10'4"
Area: 105 sq. ft
Counted as living area: Yes

Heated: Yes
Finished: Yes
Enclosed: Yes
Contiguous: Yes
Permitted: Yes
Wet space: No
Addition: No
Conversion: No

17 Floor 1 - Room

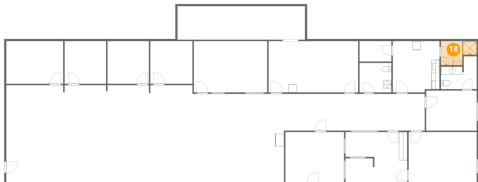


Dimensions: 16'6" x 12'4"
Area: 204 sq. ft
Counted as living area: Yes

Heated: Yes
Finished: Yes
Enclosed: Yes
Contiguous: Yes
Permitted: Yes
Wet space: No
Addition: No
Conversion: No

25 Crossing Lane, East Lexington, Lexington, Rockbridge County, Virginia, United States, 24450, 1

18 Floor 1 - Bath



Dimensions: 8'8" x 5'10"
Area: 42 sq. ft
Counted as living area: Yes

Heated: Yes
Finished: Yes
Enclosed: Yes
Contiguous: Yes
Permitted: Yes
Wet space: Yes
Addition: No
Conversion: No