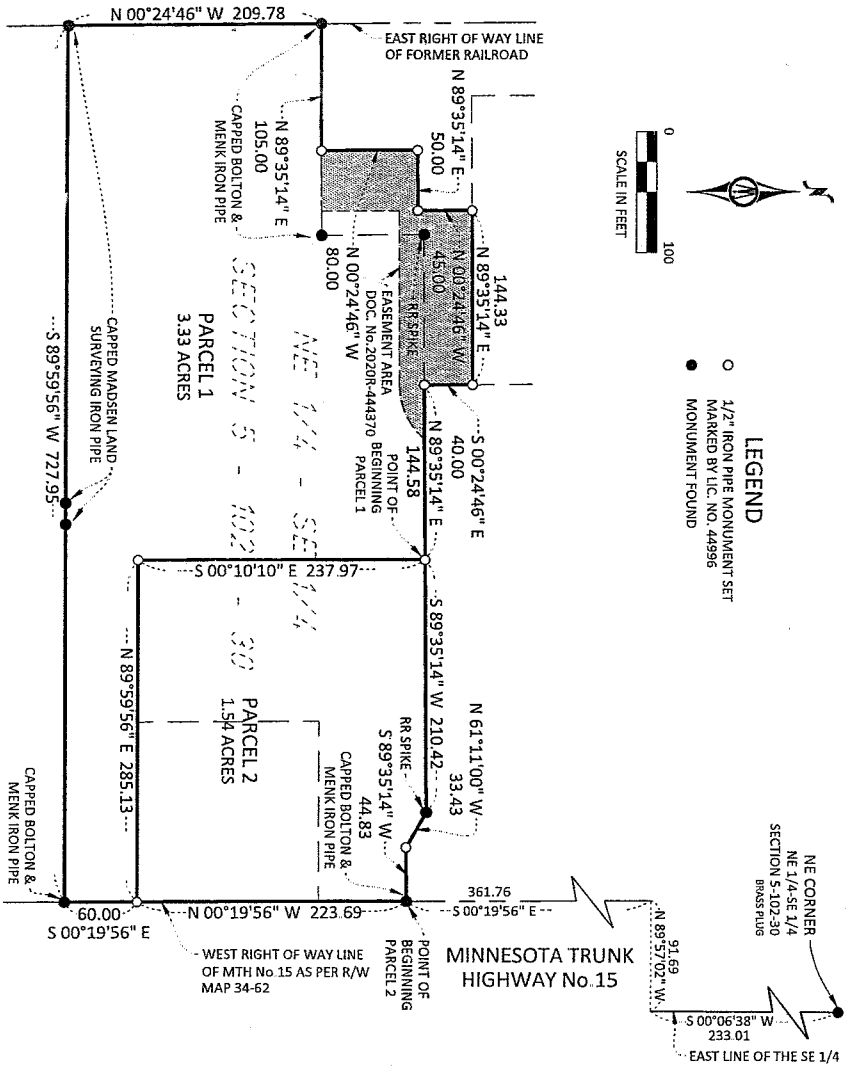


**LEGEND**  
 ○ 1/2" IRON PIPE MONUMENT SET  
 MARKED BY LIC. NO. 44996  
 ● MONUMENT FOUND



**PARCEL 1**  
**LEGAL DESCRIPTION**  
 That part of the Northeast Quarter of the Southeast Quarter of Section 5, Township 102 North, Range 30 West, City of Fairmont, Martin County, Minnesota described as follows:

Commencing at the Northeast corner of the Northeast Quarter of the Southeast Quarter of said Section 5, thence South 00 degrees 06 minutes 38 seconds West, bearing based on Martin County Coordinate System NAD83(11) on the east line of said Southeast Quarter of Section 5, a distance of 233.01 feet; thence North 89 degrees 57 minutes 02 seconds West a distance of 91.69 feet to the west right of way line of Minnesota Trunk Highway No. 15, as per R/W Map 34-62; thence South 00 degrees 19 minutes 56 seconds East, a distance of 361.76 feet on said west right of way line; thence South 89 degrees 35 minutes 14 seconds West, a distance of 44.83 feet; thence North 61 degrees 11 minutes 00 seconds East, a distance of 33.43 feet; thence North 89 degrees 11 minutes 00 seconds West, a distance of 210.42 feet to the point of beginning; thence South 00 degrees 10 minutes 10 seconds East, a distance of 237.97 feet; thence North 89 degrees 59 minutes 56 seconds East, a distance of 285.13 feet to said west right of way line of Minnesota Trunk Highway No. 15; thence South 00 degrees 19 minutes 56 seconds East on said west right of way line, a distance of 60.00 feet; thence South 89 degrees 59 minutes 56 seconds West, a distance of 223.69 feet; thence North 00 degrees 19 minutes 56 seconds West, a distance of 209.78 feet; thence North 89 degrees 35 minutes 14 seconds East, a distance of 105.00 feet; thence North 00 degrees 24 minutes 46 seconds West, a distance of 50.00 feet; thence North 89 degrees 35 minutes 14 seconds East, a distance of 144.33 feet; thence North 00 degrees 24 minutes 46 seconds West, a distance of 45.00 feet; thence North 89 degrees 35 minutes 14 seconds East, a distance of 144.58 feet to the point of beginning.

Contains 3.33 acres of land.

**PARCEL 2**  
**LEGAL DESCRIPTION**  
 That part of the Northeast Quarter of the Southeast Quarter of Section 5, Township 102 North, Range 30 West, City of Fairmont, Martin County, Minnesota described as follows:

Commencing at the Northeast corner of the Northeast Quarter of the Southeast Quarter of said Section 5, thence South 00 degrees 06 minutes 38 seconds West, bearing based on Martin County Coordinate System NAD83(11) on the east line of said Southeast Quarter of Section 5, a distance of 233.01 feet; thence North 89 degrees 57 minutes 02 seconds West, a distance of 91.69 feet to the west right of way line of Minnesota Trunk Highway No. 15, as per R/W Map 34-62; thence South 00 degrees 19 minutes 56 seconds East, a distance of 361.76 feet to the point of beginning; thence South 89 degrees 35 minutes 14 seconds West, a distance of 44.83 feet; thence North 61 degrees 11 minutes 00 seconds East, a distance of 33.43 feet; thence North 89 degrees 35 minutes 14 seconds West, a distance of 210.42 feet; thence South 00 degrees 10 minutes 10 seconds East, a distance of 237.97 feet; thence North 89 degrees 59 minutes 56 seconds East, a distance of 285.13 feet to said west right of way line of Minnesota Trunk Highway No. 15; thence North 00 degrees 19 minutes 56 seconds West on said west line, a distance of 223.69 feet to the point of beginning.

Contains 1.54 acres of land.

**SURVEYOR'S CERTIFICATION**  
 I hereby certify that this survey, plan, or report was prepared by me or under my direct supervision and that I am a duly Licensed Land Surveyor under the laws of the State of Minnesota.

*Legge D. Zeig*  
 10/10/2022  
 Date  
 License Number 44996

<b>CERTIFICATE OF SURVEY</b>	
CITY OF FAIRMONT, MARTIN COUNTY, MINNESOTA	
<b>BOLTON &amp; MENK</b>	1243 CEDAR STREET NE SLEEPY HILL, MINNESOTA 56085 (507) 794-5541
PART OF NE 1/4-SE 1/4 SECTION 5-102-30	FOR: PBR INVESTMENTS

