

# 8080 RAVINES EDGE CT

COLUMBUS, OH 43235

[WWW.WORTHINGTONMEDICALBUILDING.COM](http://WWW.WORTHINGTONMEDICALBUILDING.COM)



Scan or click here to  
view property website

## ***5,505 SF UP TO 15,988 SF OF MEDICAL OFFICE SPACE TENANT CONCESSIONS AVAILABLE BASED ON LEASE TERM***

8080 Ravines Edge Court is a 15,988 square foot, two-story medical office building located in the Worthington submarket. The property is situated in a park-like setting overlooking a serene wooded ravine. The building has two medical office suites available with the ability to combine suites for a single tenant. 8080 Ravines Edge Court features include monument signage, one passenger elevator, in-suite restrooms, and convenient parking. The location offers close proximity I-270, I-71, SR-315 and numerous amenities.

**Philip Bird, SIOR**  
614.629.5296  
pbird@ohioequities.com

**Matt Gregory, SIOR, CCIM**  
614.629.5234  
mgregory@ohioequities.com

**Mitchell Moore**  
614.629.5257  
mmoore@ohioequities.com

# AVAILABLE SPACE

Suite	SF	Lease Rate	Available
100	10,483	\$15.95/SF NNN	02/01/2026
200	5,505	\$15.95/SF NNN	07/01/2026
100+200	15,988	\$15.95/SF NNN	

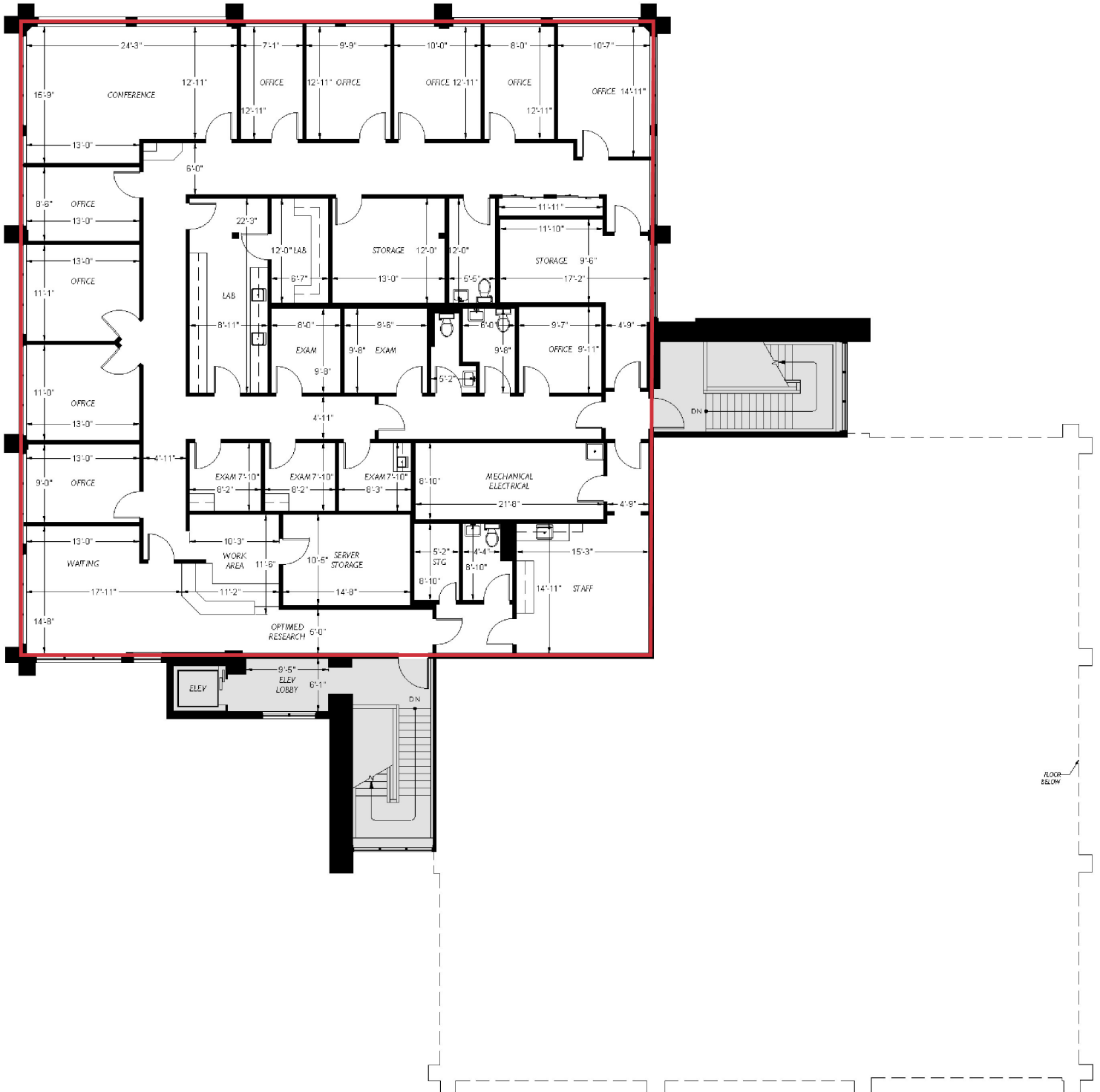
2025 Operating Expenses: \$11.16/SF



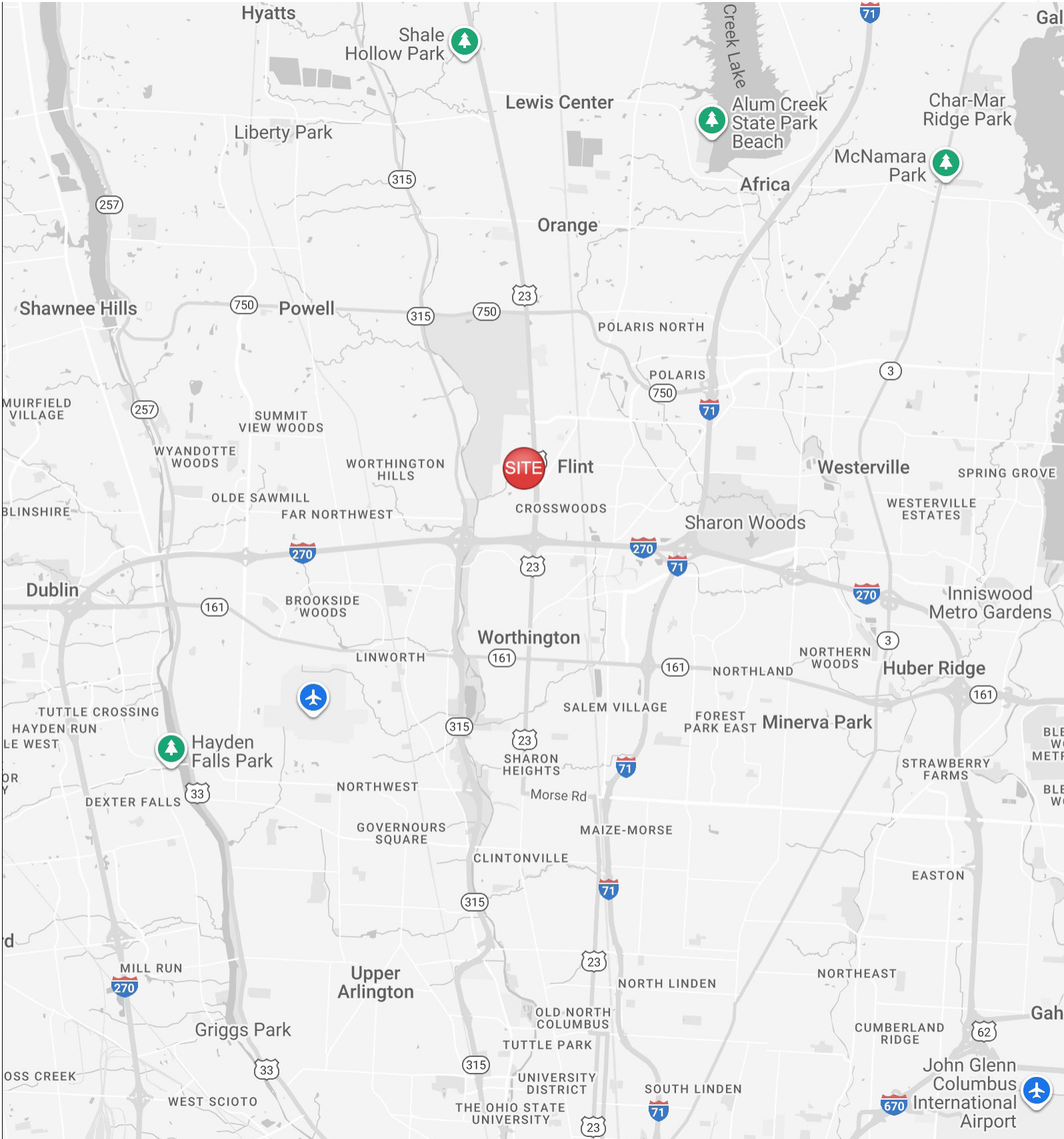
# SUITE 100 FLOOR PLAN | 10,483 SF



# SUITE 200 FLOOR PLAN | 5,505 SF



# LOCATION MAP





# CONTACT US

## PHILIP BIRD, SIOR

Vice President



614.629.5296



614.557.9967



[pbird@ohioequities.com](mailto:pbird@ohioequities.com)

## MATT GREGORY, SIOR, CCIM

Executive Managing Director



614.629.5234



614.937.6501



[mgregory@ohioequities.com](mailto:mgregory@ohioequities.com)

## MITCHELL MOORE

Senior Associate



614.629.5257



614.940.6139



[mmoore@ohioequities.com](mailto:mmoore@ohioequities.com)

