

FOR SUBLEASE

RARE HILLSBORO WAREHOUSE SUBLEASE SPACE

5401 NE CENTURY BLVD, HILLSBORO, OR

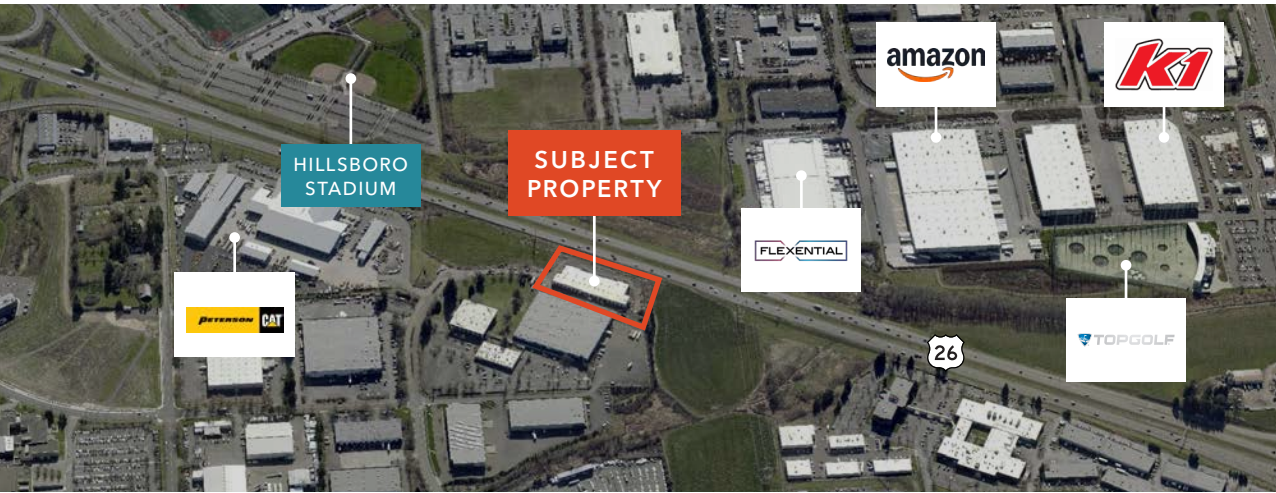


5401 NE CENTURY BLVD



Endcap warehouse unit with high visibility on HWY 26 in excellent condition.

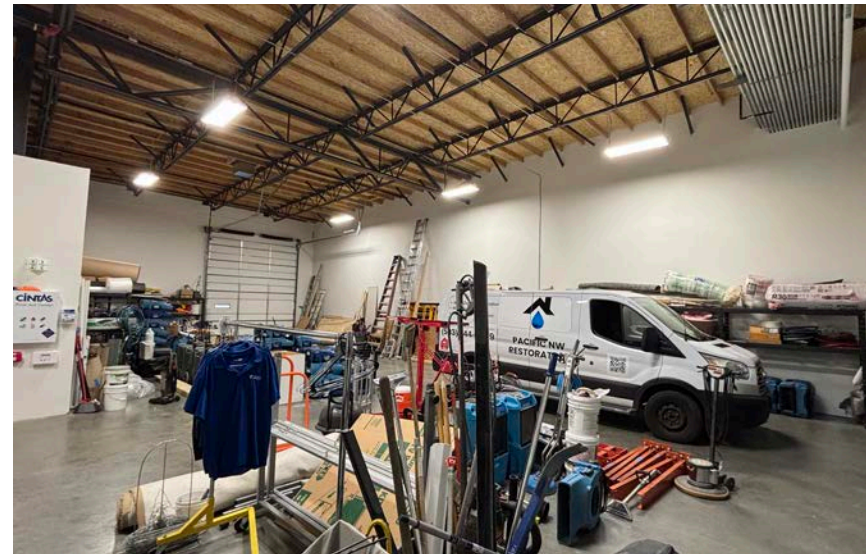
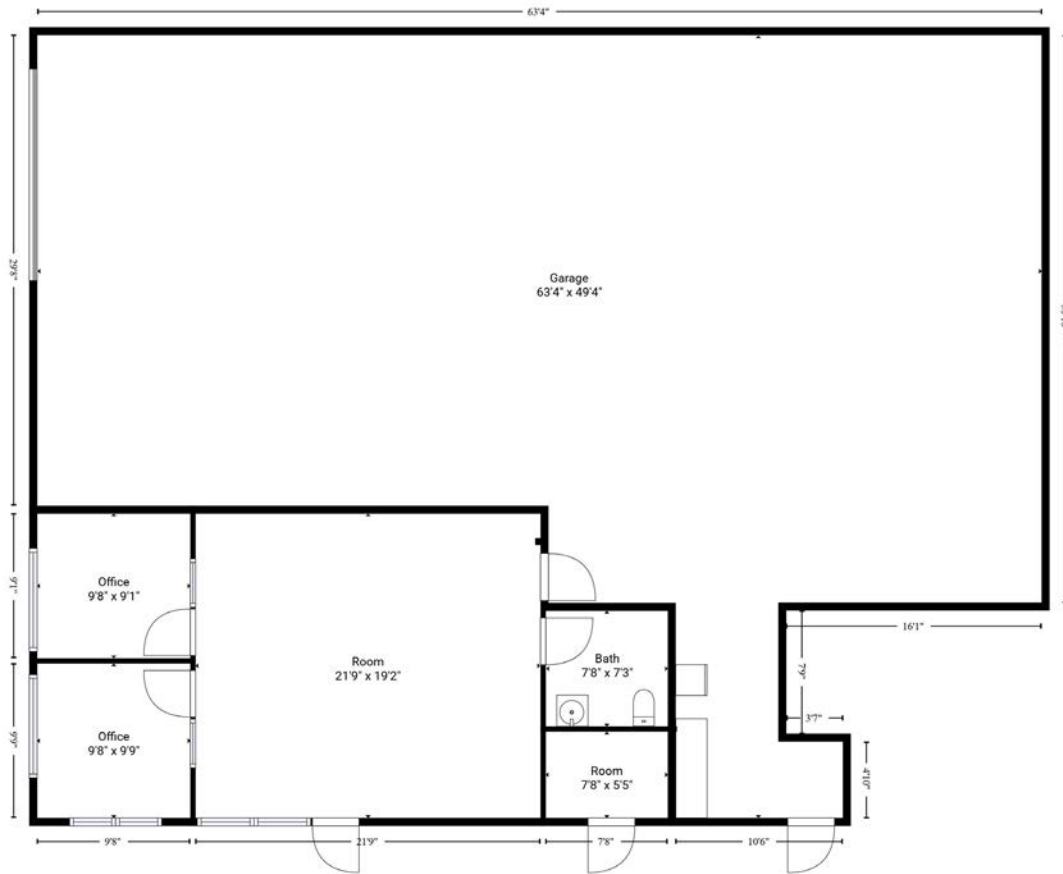
ADDRESS	5401 NE Century Blvd, Hillsboro, OR	
SIZE	Shell	±3,248 SF
	Warehouse	±2,631 SF
	Office	±617 SF
OFFICE BUILD OUT	Two private offices & open space	
LOADING	1 grade door	
CLEAR HEIGHT	16'	
ACCESS	Quick access off HWY 26	
YEAR BUILT	2024	
LEASE EXP.	Sublease runs through 7/31/2030 Potential direct deal with landlord	
BASE RENT	\$5,911/month Base Rent (\$1.82/SF/month) \$1,324/month Triple Nets	



3,248 SF
SPACE AVAILABLE

5401 NE CENTURY BLVD

FLOOR PLAN



AVAILABLE FOR SUBLEASE



5401 NE CENTURY BLVD

Exclusively listed by

CHRIS DOWHANIUK
503.789.5308
chris.dowhaniuk@kidder.com

ZACH FRANCIS
503.221.2290
zach.francis@kidder.com

KARLA HANSEN
503.721.2727
karla.hansen@kidder.com

KIDDER.COM

This information supplied herein is from sources we deem reliable. It is provided without any representation, warranty, or guarantee, expressed or implied as to its accuracy. Prospective Buyer or Tenant should conduct an independent investigation and verification of all matters deemed to be material, including, but not limited to, statements of income and expenses. Consult your attorney, accountant, or other professional advisor.

