

**FOR
LEASE**

DOCK HIGH WAREHOUSE SPACE

**5707 DOT COM, UNIT 1061
OVIEDO, FL 32765**



PROPERTY FEATURES

- 6,750 SF 4-Star Industrial Space
- 8.4 Acre Site, 1.4/1,000 Parking ratio
- Dock-high loading with overhead door
- Sublease space available from current tenant
- 28' Ceiling
- Partial showroom/office build-out
- Located just off Alafaya Trail, minutes from the Greenway (SR 417), with access to the Beachline (SR 528) and I-4.

C O N T A C T

Mek Greene
386.216.9466 mobile
mek@resultsrepartners.com

Results Real Estate Partners,
LLC

Licensed Commercial Real Estate Brokers
108 Commerce Street, Suite 200
Lake Mary, Florida 32746

407.647.0200 *main*
407.647.0205 *fax*

www.ResultsREPartners.com

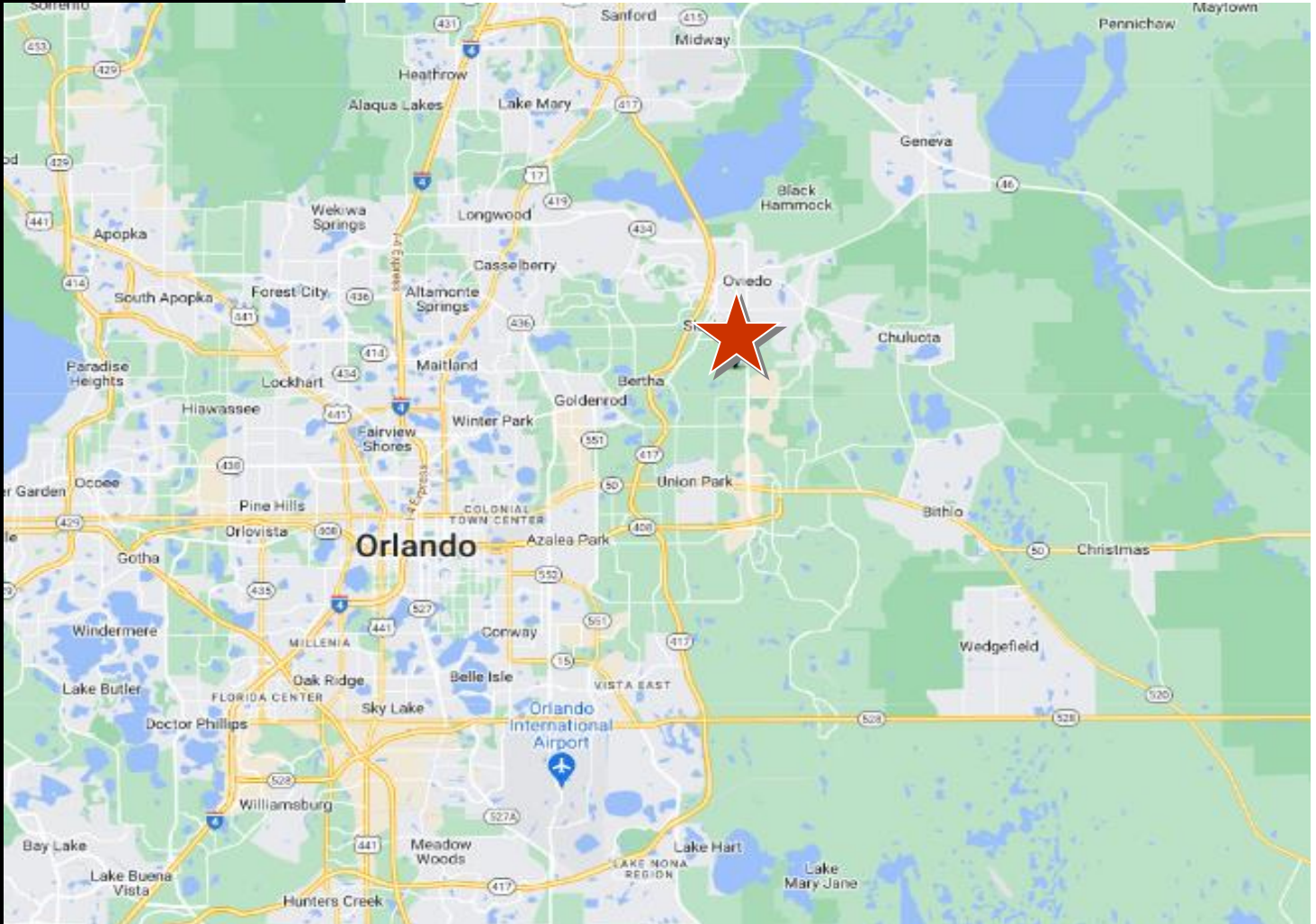
Lease Amount: \$5,075 NNN (\$9.27 SF/Yr)
(4 Year Term Remaining)

This information is from sources we deem reliable and is subject to prior sale, lease, withdrawal without notice, or change in prices, rates, or conditions. No representation is made as to the accuracy of any information furnished.

**FOR
LEASE**

DOCK HIGH WAREHOUSE SPACE

**5707 DOT COM, UNIT 1061
OVIEDO, FL 32765**



CONTACT

Mek Greene
386.216.9466 mobile
mek@resultsrepartners.com

Results Real Estate Partners, LLC
Licensed Commercial Real Estate Brokers
108 Commerce Street, Suite 200
Lake Mary, Florida 32746

407.647.0200 main
407.647.0205 fax

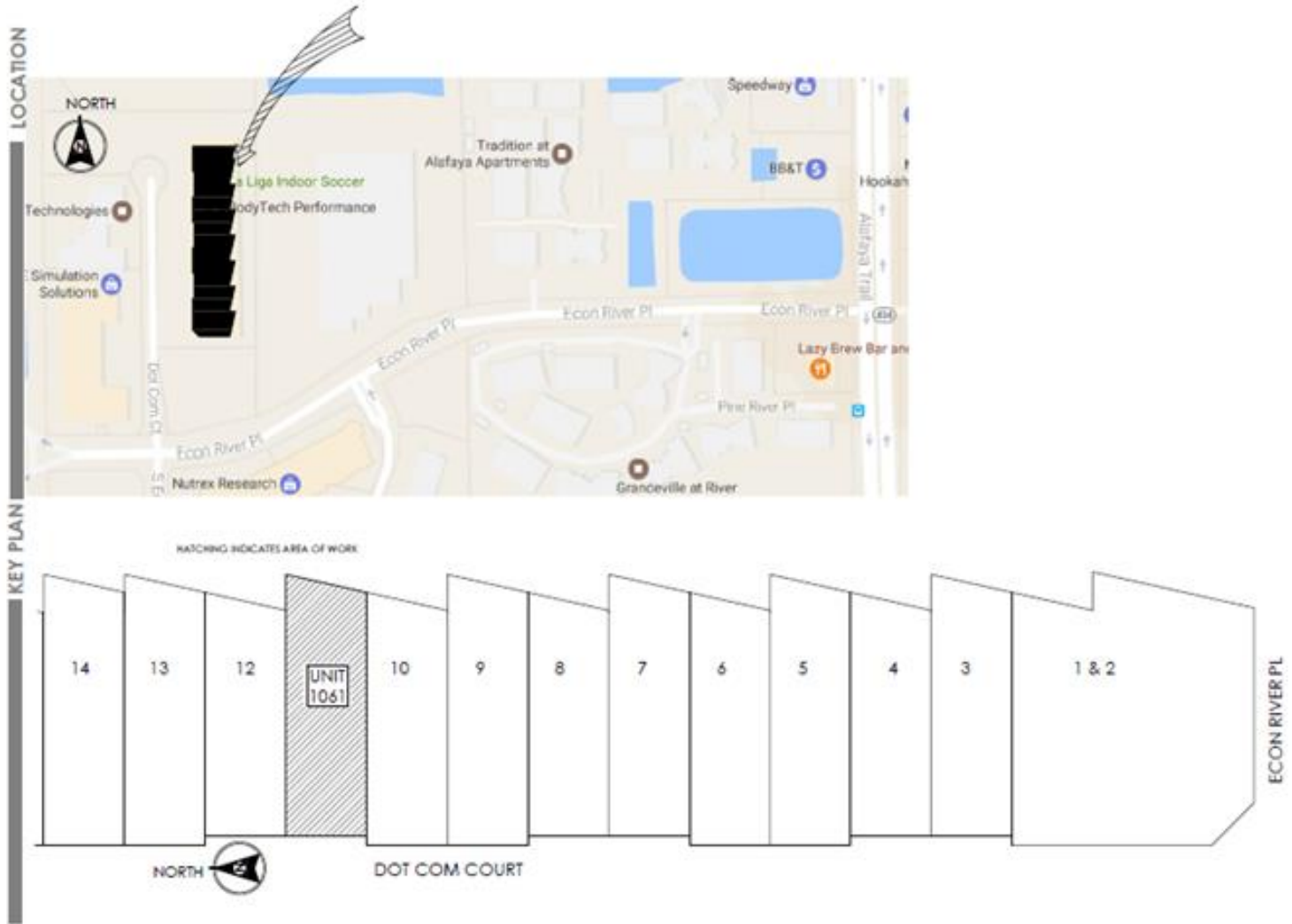
www.ResultsREPartners.com



**FOR
LEASE**

DOCK HIGH WAREHOUSE SPACE

**5707 DOT COM, UNIT 1061
OVIEDO, FL 32765**



CONTACT

Mek Greene
386.216.9466 mobile
mek@resultsrepartners.com

Results Real Estate Partners, LLC
Licensed Commercial Real Estate Brokers
108 Commerce Street, Suite 200
Lake Mary, Florida 32746

407.647.0200 main
407.647.0205 fax

www.ResultsREPartners.com

This information is from sources we deem reliable and is subject to prior sale, lease, withdrawal without notice, or change in prices, rates, or conditions. No representation is made as to the accuracy of any information furnished.

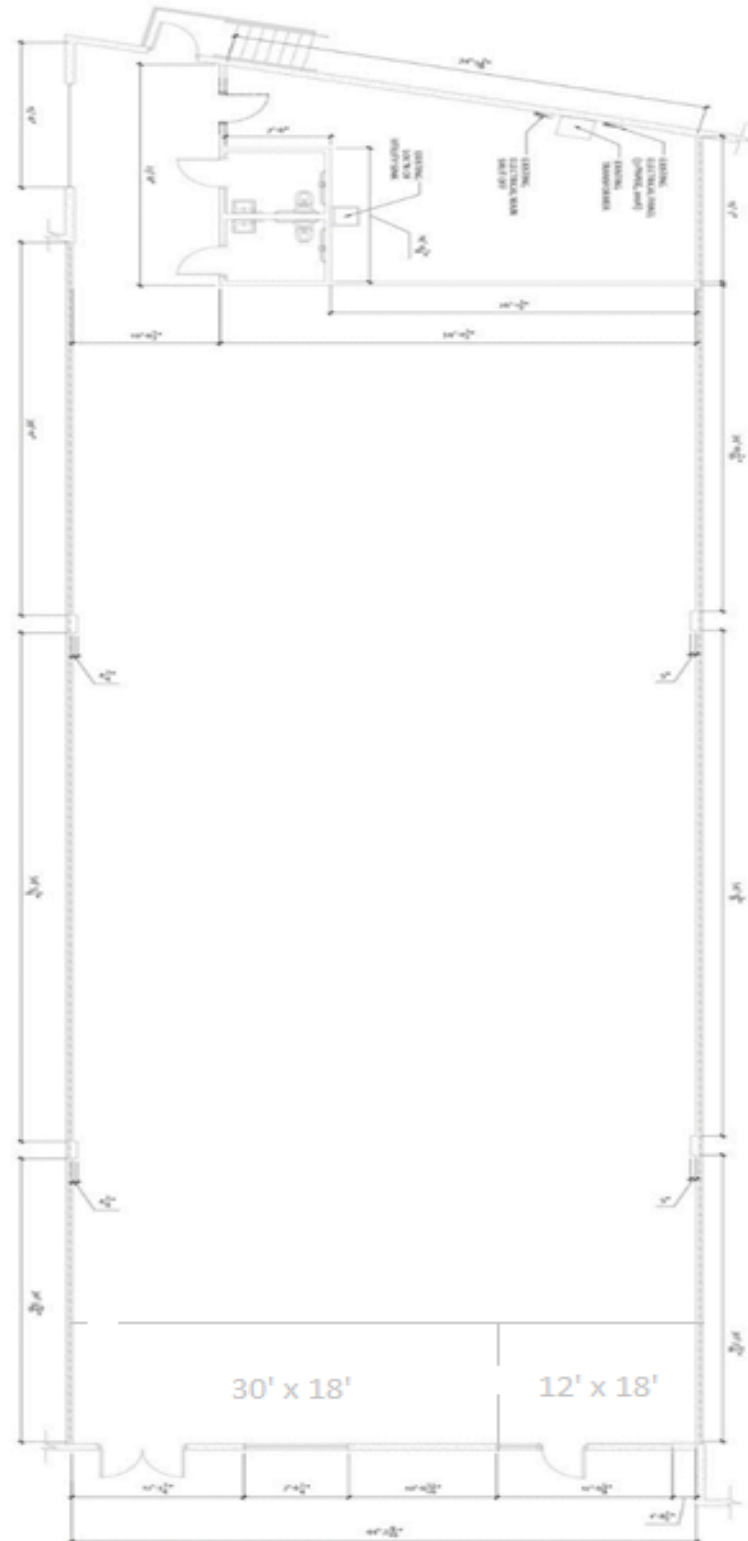
**FOR
LEASE**

DOCK HIGH WAREHOUSE SPACE

**5707 DOT COM, UNIT 1061
OVIEDO, FL 32765**



01 FLOOR PLAN - EXISTING CONDITIONS



CONTACT

Mek Greene
386.216.9466 mobile
mek@resultsrepartners.com

Results Real Estate Partners, LLC
Licensed Commercial Real Estate Brokers
108 Commerce Street, Suite 200
Lake Mary, Florida 32746

407.647.0200 main
407.647.0205 fax

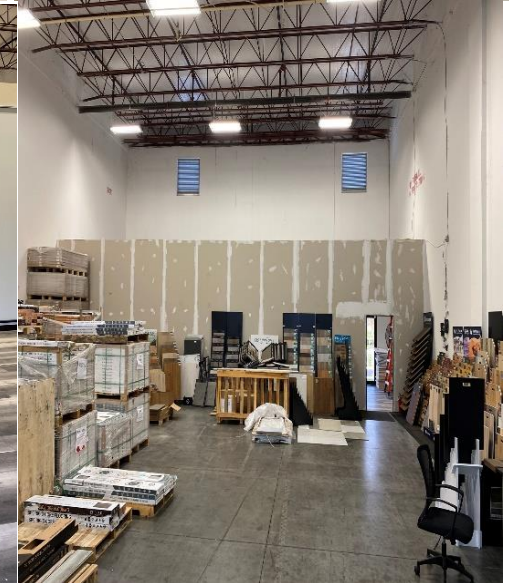
www.ResultsREPartners.com

This information is from sources we deem reliable and is subject to prior sale, lease, withdrawal without notice, or change in prices, rates, or conditions. No representation is made as to the accuracy of any information furnished.

**FOR
LEASE**

DOCK HIGH WAREHOUSE SPACE

**5707 DOT COM, UNIT 1061
OVIEDO, FL 32765**



This information is from sources we deem reliable and is subject to prior sale, lease, withdrawal without notice, or change in prices, rates, or conditions. No representation is made as to the accuracy of any information furnished.