

FOR LEASE/AVAILABLE

611 E. Villanow Street (HWY 136)
Lafayette, Georgia
Walker County



PROPERTY FEATURES

- ◆ 10,236 SF
- ◆ Multi Entrances for Easy Subdivision
- ◆ 6 Restrooms
- ◆ 14 Exam Rooms
- ◆ Ample Surface Parking
- ◆ Previously CHI Memorial
- ◆ Excellent Condition

LEASE RATE : \$14.00/SF NNN

FOR INFORMATION CONTACT

BILL RAINES, CCIM, CRX, CSM, RPA
PHONE: 423-875-3600
EMAIL: BRAINES@RAINESGROUP.COM

WWW.RAINESGROUP.COM



THE RAINES GROUP, INC.
1200 MOUNTAIN CREEK ROAD
SUITE 100
CHATTANOOGA, TN 37405

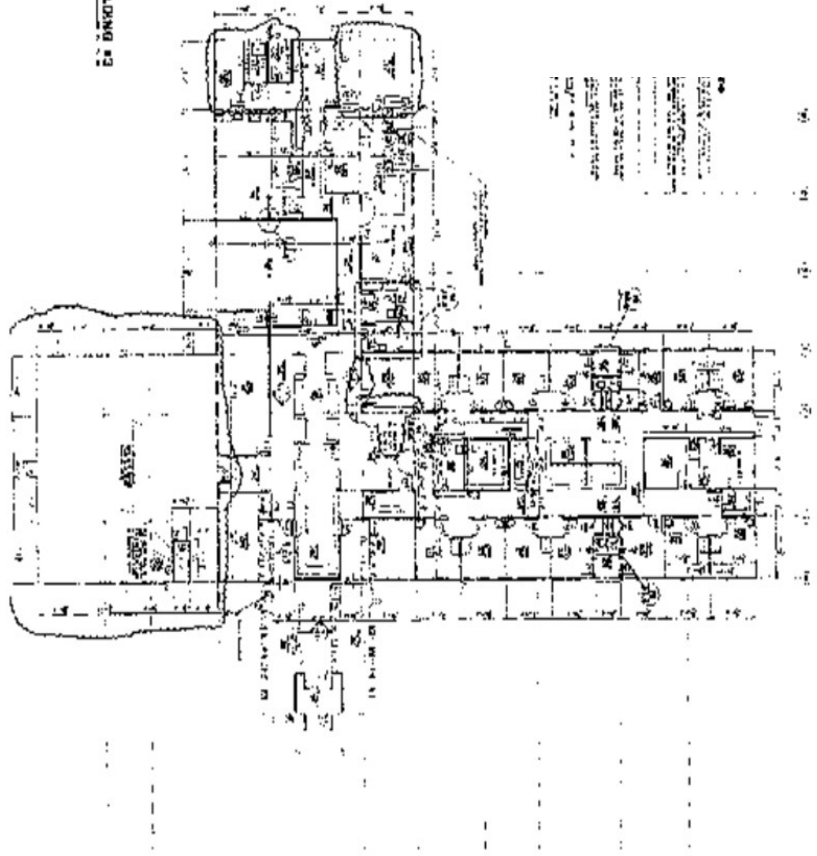
[TN LICENSE #00241927]
[GA LICENSE #H13090]

611 E. Villanow Street (HWY 136)
Lafayette, Georgia



11
10
9
8
7
6
5
4
3
2
1
OCCUPANCY PLAN - BUILDING #2

FLOOR PLAN

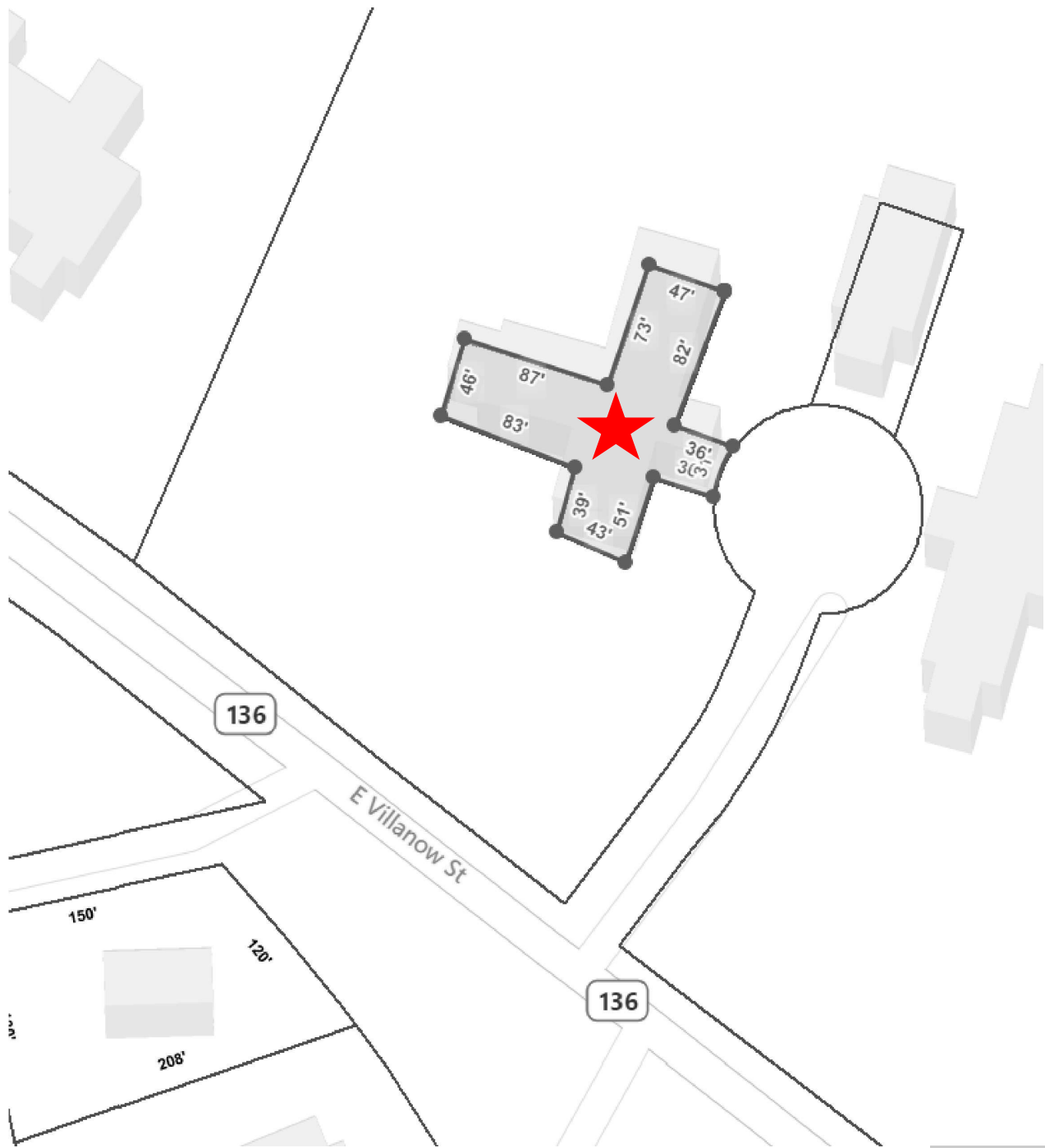


THE
RAINES
GROUP
REAL ESTATE
423-875-3600

Disclaimer: The data contained herein has been provided by reliable sources, however, they should be considered estimates and/or projections, are subject to change without notice, and are not warranted by The Raines Group, Inc. It is advised that the Investor or Tenant carry out his own due diligence through his own professional advisors before making any final decisions on the property in question.

611 E. Villanow Street (HWY 136)
Lafayette, Georgia

TAX MAP



611 E. Villanow Street (HWY 136)
Lafayette, Georgia

AERIAL MAP



611 E. Villanow Street (HWY 136)
Lafayette, Georgia

LOCATION MAP

