

12/01/23

GENERAL NOTES - FINISH PLAN

- A. REFER TO WALL SECTIONS & ELEVATIONS FOR ADDITIONAL INFORMATION & REQUIREMENTS.
- B. INTERIOR WALL & CEILING FINISH MATERIALS SHALL BE INSTALLED IN ACCORDANCE W/ ALL APPLICABLE CODES.
- C. ALL FINISHES SHALL MEET FLAMES SPREAD & SMOKE DEVELOPMENT RATING FOR THEIR USE AS REQUIRED BY LOCAL CODES.
- D. TAPE, BED, FLOAT & SAND GYP, BD. JOINTS, PAINT (1) COAT OF PRIMER & (2) COATS OF SCHEDULED COLOR WHERE PATCHING OCCURS IN A SMOOTH PAINTED SURFACE. EXTEND FINAL PAINT COAT OVER ENTIRE UNBROKEN SURFACE CONTAINING THE PATCH AFTER THE PATCHED AREA HAS RECEIVED PRIMER & SECOND COAT.
- E. G.C. SHALL CAULK JOINT BETWEEN CEILING GRID & FRP WALL PANELS IN ALL UTILITY AREAS.
- F. G.C. SHALL PREP & SMOOTH EXISTING CONCRETE SLAB PRIOR TO NEW FLOOR FINISH INSTALLATION.
- G. ALL HOLLOW METAL DOORS & FRAMES (U.N.O.) SHALL BE PRIMED & PAINTED.
- H. CHANGES IN LEVEL UP TO 1/4" BETWEEN DIFFERENT FLOOR FINISHES CAN BE MADE VERTICAL & W/O EDGE TREATMENT. CHANGES IN LEVEL OF 1/4" - 1/2" SHALL BE MADE W/A BEVELED TRANSITION OR OTHER MATERIAL W/ A SLOPE NO GREATER THAN 1/2. CHANGES IN LEVEL GREATER THAN 1/2" SHALL BE ACCOMPLISHED BY MEANS OF A RAMP. VERIFY FINISH OF TRANSITION STRIP MATERIAL W/ OWNER. G.C. SHALL FURNISH & INSTALL TRANSITION STRIP.
- I. TENANT'S G.C. SHALL PROVIDE SERVICES FOR THE FINAL CLEAN-UP PRIOR TO TURNING STUDIO OVER, TO INCLUDE: MOPPING & BROOM CLEAN-UP.
- J. THE CONTRACTOR SHALL PROTECT ALL ADJACENT MATERIALS & EQUIPMENT AGAINST DAMAGE FROM SPILLAGE, DRIPPING & SPATTER OF COATING MATERIALS. REPLACED DAMAGED TILE AS REQUIRED. ALL BUILDING MATERIALS & EQUIPMENT SHALL BE LEFT CLEAN WITH ALL DAMAGED SURFACES CORRECTED. PROVIDE "WET PAINT" SIGNS TO INDICATE NEWLY PAINTED SURFACES.
- K. ALL GROUT TO CONTAIN ACRYLIC ADDITIVE SEALER.
- L. WALLS & CEILINGS: LEVEL 4 FINISH - DURABLE, NON-ABSORBENT & WASHABLE.

NOTE: NO ALTERATIONS TO FINISHES WITHOUT OWNER APPROVAL.

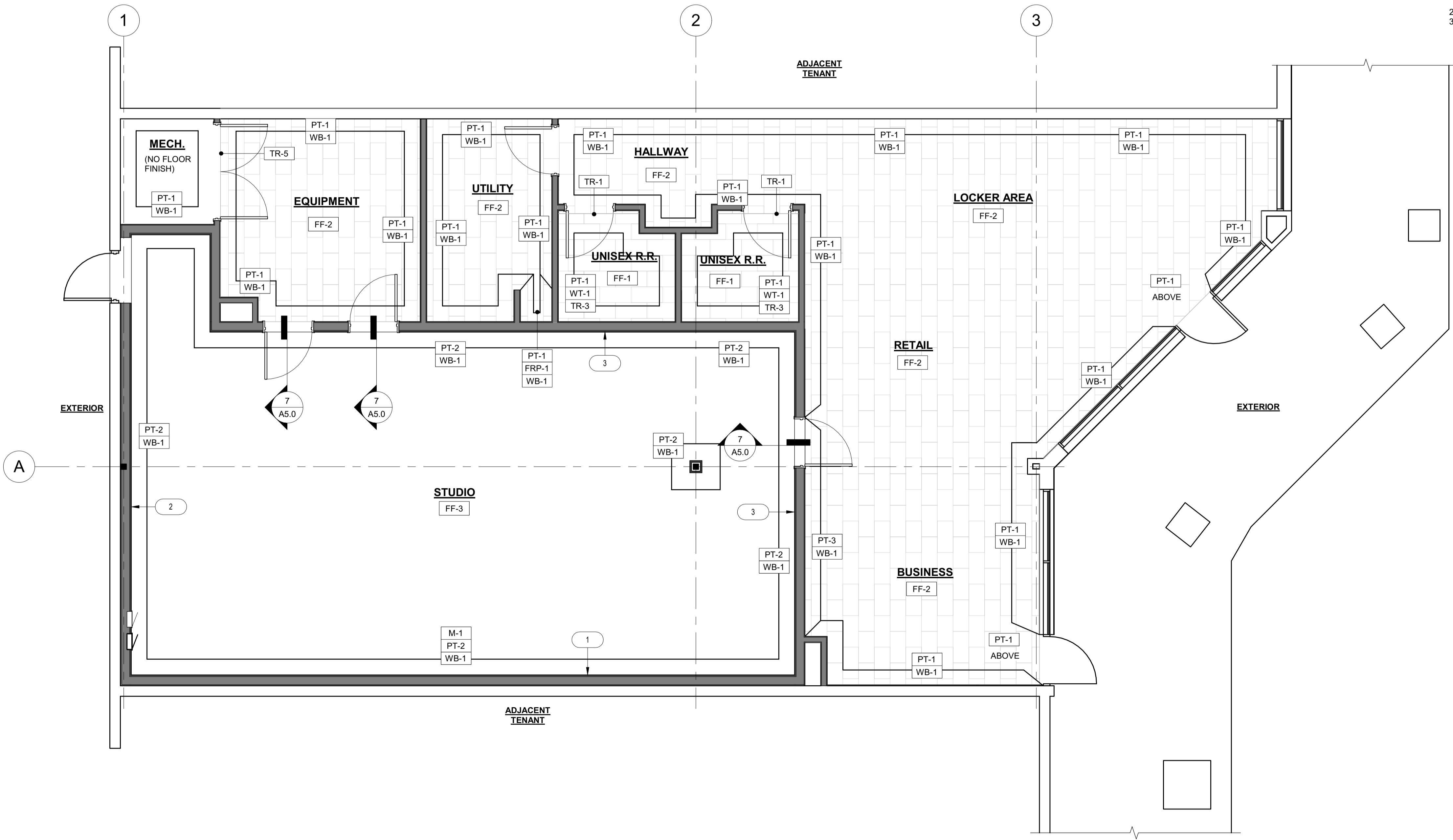
KEYNOTES - FINISH PLAN

- 1 MIRROR WALL - REFER TO SHEET A3.0
- 2 GRAPHICS / TRX WALL - REFER TO SHEET A3.0
- 3 TRX WALL - PROVIDE 2 X 12 BLOCKING - REFER TO SHEET A3.0 & DETAIL 6/A6.1

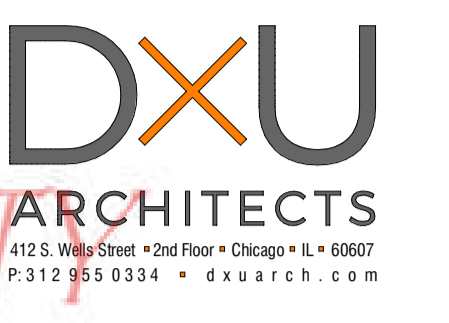
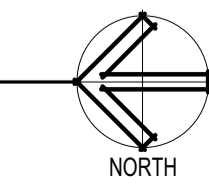
FINISH NOTES:

- 1. ALL WALL & CEILING FINISHES SHALL BE MIN. CLASS C, FLAME SPREAD INDEX 76-200; SMOKE DEVELOPED INDEX 0 - 450
- 2. MATERIALS SHALL BE CLASSIFIED IN ACCORDANCE W/ ASTM E84 OR UL 273
- 3. PAINT IS EXEMPT DUE TO THICKNESS OF LESS THAN 0.9 MM PER SECTION 803.2

| TAG | DESCRIPTION | MANUFACTURER | PRODUCT INFO | COMMENTS |
|----------------------------------|---|---------------------|-------------------------------|--|
| FLOOR FINISH: | | | | |
| FF-1 | COLOR: GRAY - SPS CERAMIC FLOOR TILE | SPORT PRO SURFACING | SIZE: 12" X 24" | GROUT: GR-1 1/8" RUNNING BOND |
| FF-2 | COLOR: GRAY - LUXURY VINYL TILE | SPORT PRO SURFACING | SIZE: 12" X 24" | INSTALLATION: PARALLEL TO STOREFRONT 1/3 OFFSET PATTERN |
| FF-3 | COLOR: GRAY - SPS CUSTOM YOGA FLOOR | SPORT PRO SURFACING | - | - |
| WALL TILE: | | | | |
| WT-1 | COLOR: WHITE - CERAMIC WALL TILE | SPORT PRO SURFACING | SIZE: 4" X 16" | INSTALLATION: STACKED PATTERN - 5' - 0" WAINSCOTT, GROUT: GR-2 1/8" |
| GROUT: | | | | |
| GR-1 | COLOR: SANDSTONE #34 | LATICRETE | SANDED | JOINT SPACING: 1/8" |
| GR-2 | COLOR: BRIGHT WHITE #44 | LATICRETE | NONSANDED | JOINT SPACING: 1/8" |
| FIBER REINFORCED PLASTIC: | | | | |
| FRP-1 | COLOR: WHITE - SMOOTH, SPECIFICATION: S100G | MARLITE OR EQUAL | S100/S2/S | INSTALLATION: W/ PVC TRIM @ 4'-0" A.F.F. CLASS C PER ASTM E84 |
| WALL BASE: | | | | |
| WB-1 | COLOR: CHARCOAL - SERIES: 700 | ROPPE | 4" COVE | - |
| WALL FINISH: | | | | |
| PT-1 | COLOR: PURE WHITE - SW 7005, SHEEN: SEMI-GLOSS, FINISH: EGGSHELL | SHERWIN WILLIAMS | - | ROOM LOCATIONS: LOBBY, EQUIPMENT, MECHANICAL, RESTROOMS & UTILITY |
| PT-2 | COLOR: PURE WHITE - SW 7005, SHEEN: SEMI-GLOSS, FINISH: EGGSHELL | SHERWIN WILLIAMS | - | ROOM LOCATION: STUDIO |
| PT-3 | COLOR: SW CUSTOM BLUE, SHEEN: SEMI-GLOSS, FINISH: EGGSHELL | SHERWIN WILLIAMS | - | LOCATIONS: DOORS & LOBBY DIAGONAL WALL |
| ACOUSTICAL CEILING TILE: | | | | |
| ACT-1 | COLOR: WHITE ACOUSTIC CEILING PANEL & GRID, FINISH: SMOOTH, SIZE: 24" X 24" | ARMSTRONG | CALLA - MOISTURE RESISTANT | GRID: PRELUDE XL 15/16" EXPOSED TEE SYSTEM CLASS A PER ASTM E84 FLAME SPREAD: 25 SMOKE DEVELOPED: 50 |
| TRANSITION: | | | | |
| TR-1 | FINISH: SATIN ANODIZED ALUMINUM | SCHLUTER | RENO-U-AEU80 | SEE DETAIL 8A/A6.1 |
| TR-2 | FINISH: SATIN ANODIZED ALUMINUM | SCHLUTER | QUADEC | SEE DETAIL 4/A6.1 |
| TR-3 | FINISH: SATIN ANODIZED ALUMINUM | SCHLUTER | AHKA | SEE DETAIL 3/A6.1 |
| TR-4 | COLOR: BLACK #100 | ROPPE | #66 | SEE DETAIL 8B/A6.1 |
| TR-5 | COLOR: BLACK | ROPPE | #22 | SEE DETAIL 8B/A6.1 |
| MISCELLANEOUS | | | | |
| M-1 | MIRROR - FINISH: POLISHED, EDGES: PENCIL POLISHED | SOURCED BY G.C. | SIZE: 48"L X 96"H X 3/16"THK. | LOCATION: STUDIO MIRROR WALL - SEE SHEET A3.0 |



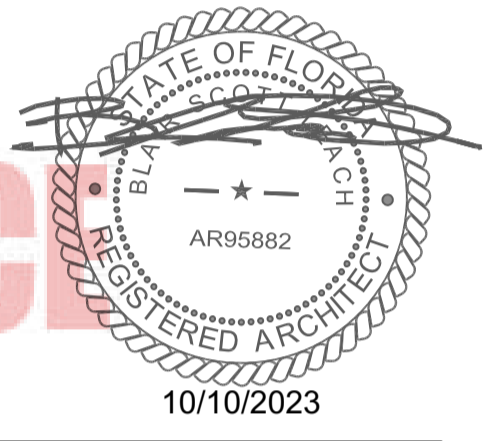
1 FINISH PLAN
SCALE: 1/4" = 1'-0"



PROVIDING A NATURAL CHOICE
FOR THE PEOPLE OF COUNTY
FIRE PREVENTION DIVISION AND
FIRE PREVENTION BUREAU

Blair S. Leach

Digitally signed by Blair S. Leach
Date: 2023.10.10 15:11:50 -07'00'



THESE PLANS ARE
CONDITIONALLY
ACCEPTED FOR PERMIT
AND ARE CONDITIONED TO
ANY CORRECTION NOTES
ON PLANS.

ISSUANCE OF PERMIT IS
LICENSE TO CONSTRUCT
ONLY IN ACCORDANCE
WITH ADOPTED CODES
AND DOES NOT WAIVE ANY
CODE REQUIREMENT NOT
NOTED IN PLANS OR
REVIEW COMMENTS.

ISSUANCE OF PERMIT
DOES NOT PREVENT FIELD
INSPECTORS FROM
REQUIRING CORRECTIONS
TO MEET ADOPTED CODES.

| NO. | DESCRIPTION | DATE |
|-----|-------------|------|
| | | |

TITLE:
FINISH PLAN

DATE:
07.20.2023

PROJECT NO.
23-142

SHEET NO.
A2.1

