

# 325 JOHN H. MCCONNELL BLVD.

# ARENA • DISTRICT

DOWNTOWN COLUMBUS

FLOOR 4 | SUITE 400 + SUITE 415

±7,700 RSF ±2,950 RSF | CAN BE COMBINED ±10,650 RSF

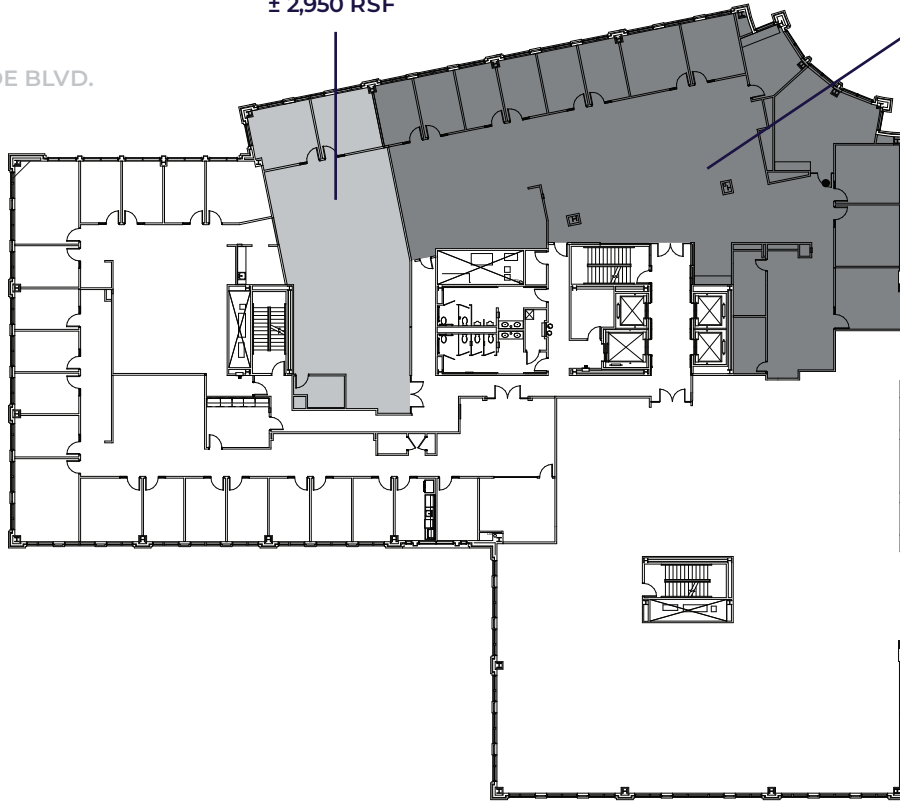
ARENA DISTRICT | 325 JOHN H. MCCONNELL BLVD.

W. NATIONWIDE BLVD.

AVAILABLE  
SUITE 415  
± 2,950 RSF

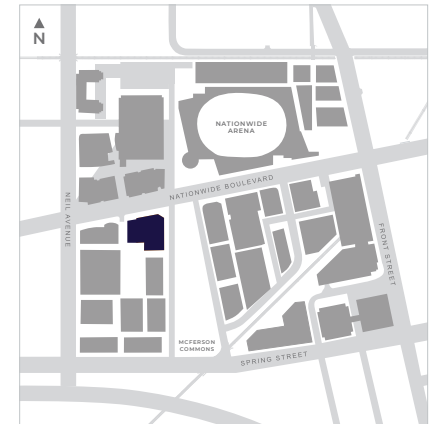
CAN BE  
COMBINED FOR  
± 10,650 RSF

AVAILABLE  
SUITE 400  
± 7,700 RSF



MCFERSON COMMONS

## ARENA DISTRICT LOCATION



## DEVELOPER



Owned and developed by  
NATIONWIDE REALTY INVESTORS

Chris Thompson

thompscj@nationwide.com

614.857.2330

## OFFICE LEASING

# NEWMARK

Wayne Harer

wayne.harer@nrmk.com

614.883.1200

Ken Isenbarger

kenneth.isenbarger@nrmk.com

614.883.1200