



# 900 Bank Street

Ottawa, Ontario

**2,583 SF OF RETAIL SPACE AVAILABLE**

 **Canderel**

For more information:  
Jordan Allen  
Senior Manager, Investments &  
Development, Broker of Record  
Email: [jallen@canderel.com](mailto:jallen@canderel.com)

# PROPERTY DESCRIPTION

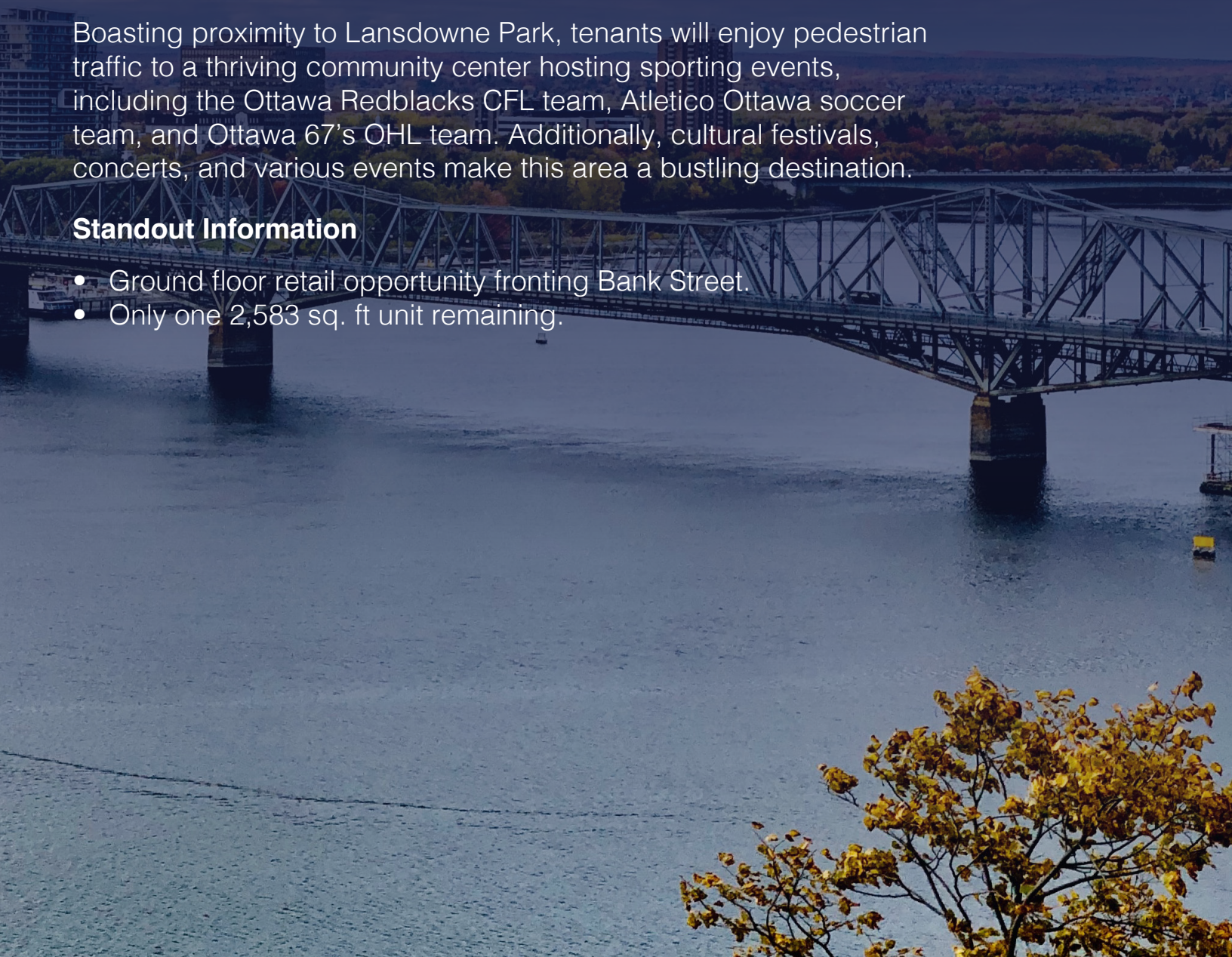
900 Bank Street provides an opportunity to lease prime retail space in a vibrant mid-rise mixed-use project developed by Canderel in collaboration with Succession Development Corporation. Boasting approximately 17,000 square feet of premium retail space, this prime location in the affluent Glebe neighborhood offers an exceptional leasing opportunity.

Situated with frontage on Bank Street, this development is 85% leased with one unit remaining consisting of 2,583 SF. The unit is designed to cater to the needs of retailers, providing efficiency and flexibility for various business types.

Boasting proximity to Lansdowne Park, tenants will enjoy pedestrian traffic to a thriving community center hosting sporting events, including the Ottawa Redblacks CFL team, Atletico Ottawa soccer team, and Ottawa 67's OHL team. Additionally, cultural festivals, concerts, and various events make this area a bustling destination.

## **Standout Information**

- Ground floor retail opportunity fronting Bank Street.
- Only one 2,583 sq. ft unit remaining.





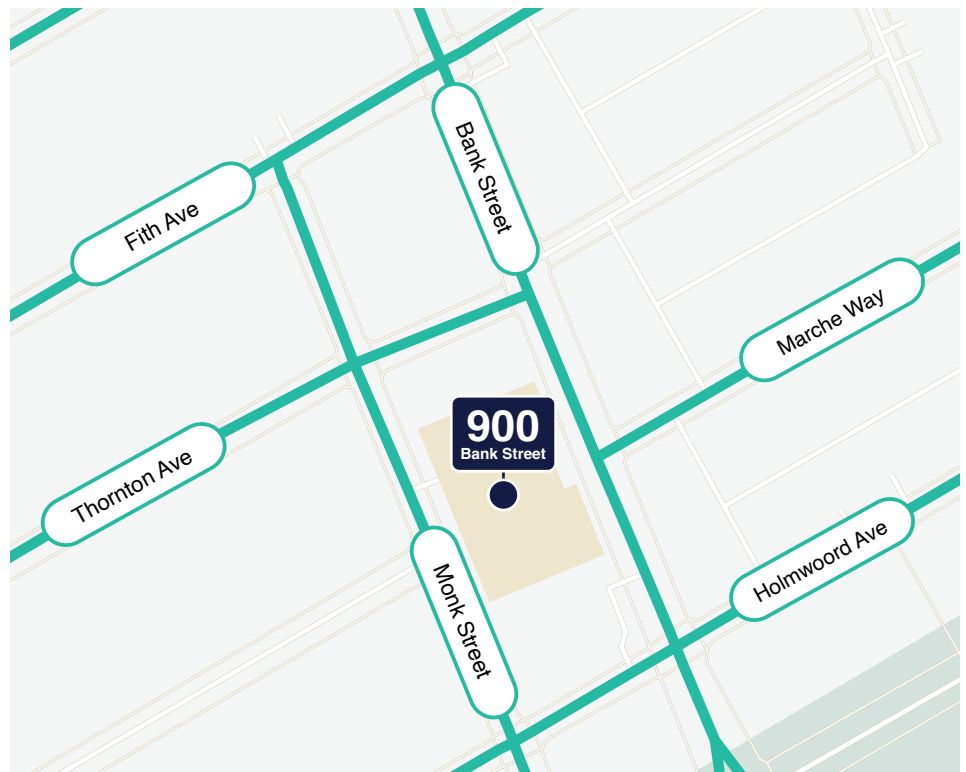
## Local Amenities



## Features

- New development retail space
- Bank Street frontage
- Ground floor signage and branding opportunities
- Ready for tenant-fit-up
- Located within the heart of the Glebe
- Walking distance to Lansdowne Park amenities such as the Ottawa 67's hockey team, Ottawa Redblacks CFL team, over 130,000 SF of office space and multiple residential buildings within the park

## Location



For more information:

Jordan Allen

Senior Manager, Investments &  
Development, Broker of Record

Email: [jallen@canderel.com](mailto:jallen@canderel.com)

## Neighbouring Tenants

*Tim Hortons*

Suite: #100



Suite: #110

Removery

Suite: #130



Suite: #140

BEER  
STORE

Suite: #170

## Features

- Area Available: 2,583 SF certified
- Asking Rent : Contact for more details.
- Additional Rent: (2024 Est): \$15.56 PSF

## Space Preview



For more information:

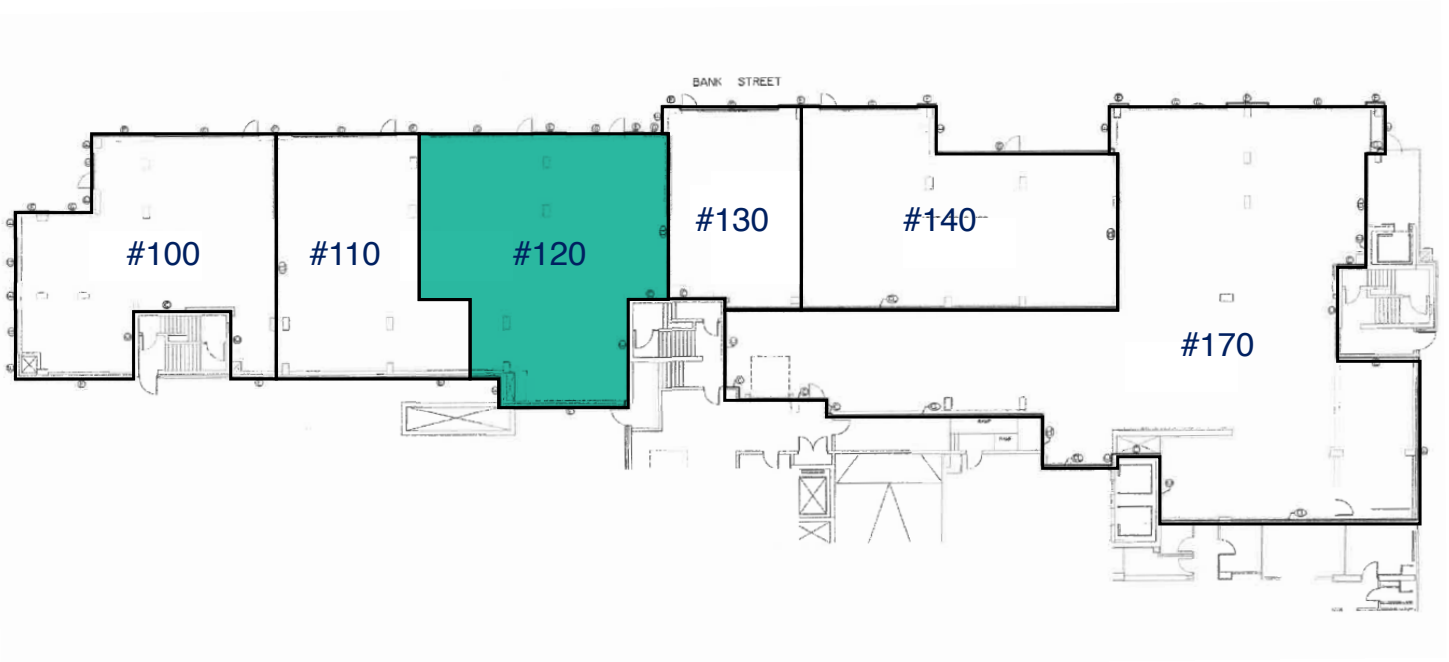
Jordan Allen

Senior Manager, Investments &  
Development, Broker of Record

Email: [jallen@canderel.com](mailto:jallen@canderel.com)

## Street Level Availabilities

---



Suite	Area
#120	Certified, 2,583 SF

Errors and Omissions Excepted

For more information:  
Jordan Allen  
Senior Manager, Investments &  
Development, Broker of Record  
Email: [jallen@canderel.com](mailto:jallen@canderel.com)