

# HIGH-VISIBILITY OFFICE SPACE FOR LEASE

## 1200 SF

6810 W Layton Ave, Greenfield WI 53220



**1200 SF available in brand new, single-story office building located in one of the best parts of the metro Milwaukee. The building is in a highly visible location with off-street parking and great co-tenancy.**



**Grant Bradley | Senior Advisor**

 608-886-0899

 [Grant.Bradley@ryzoCRE.com](mailto:Grant.Bradley@ryzoCRE.com)

**Amy Hotter | Advisor**

 608-640-7410

 [Amy.Hotter@ryzoCRE.com](mailto:Amy.Hotter@ryzoCRE.com)



# BUILDING INFO

## Features:

- New Medical/Office Building – Available now
- Tremendous signage/visibility
- Strong co-tenancy
- Dense area demographics
- Free surface parking

Net Rental Rate: Negotiable  
Operating Expenses: \$7.48 per SF  
Real Estate Taxes: \$2.50 per SF

**Grant Bradley**  
Senior Advisor  
608-886-0899  
Grant.Bradley@ryzoCRE.com

**Amy Hotter**  
Advisor  
608-640-7410  
Amy.Hotter@ryzoCRE.com



**ADDRESS**  
6810 W Layton Ave  
Greenfield, WI



**BUILDING SIZE**  
4000 SF



**SPACE AVAILABLE**  
1200 SF



**YEAR BUILT**  
2023



**TRAFFIC COUNT**  
21,653



**BUILDING TENANTS**  
Greater Milwaukee Oral  
Surgery




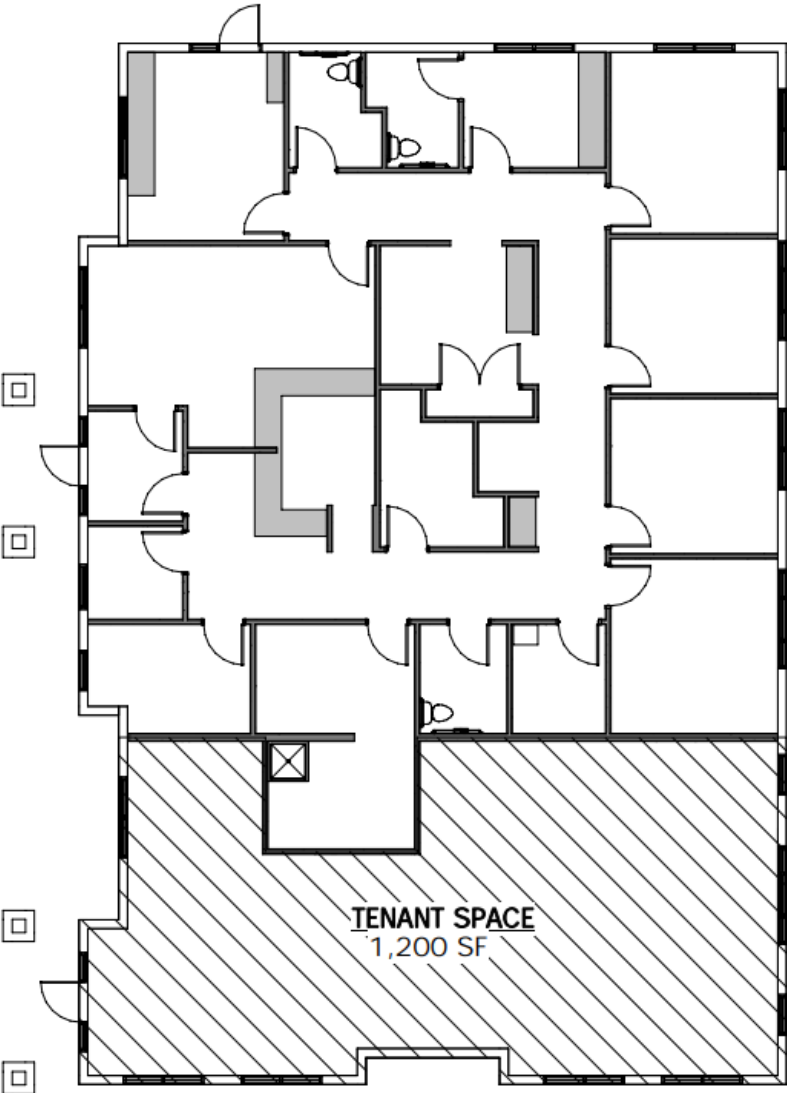
**Parking**  
25 total spaces (7+ per  
1000 SF)



**Signage**  
Monument

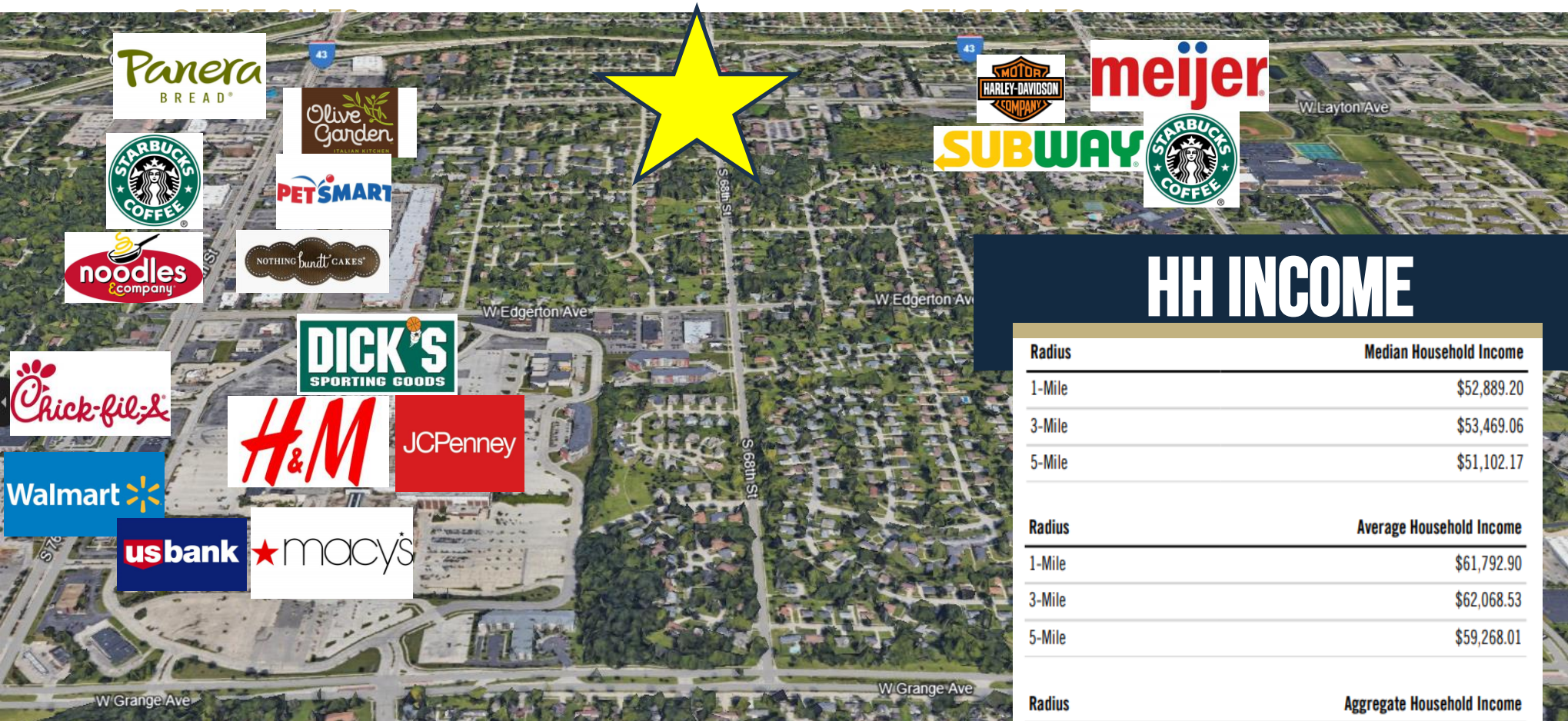
# FLOOR PLAN

 Vacant Space



# AREA OVERVIEW

As one of the strongest parts of Milwaukee County, Greenfield is a strategic location in the heart of a vibrant suburban community and connected to major highways. With excellent schools and recreation facilities, while still accessible from downtown Milwaukee, the area creates a strong demand for families and professionals. The economic and geographical makeup of the area creates an ideal location for a healthcare practice, general office user, or professional firm.



## HH INCOME

Radius	Median Household Income
1-Mile	\$52,889.20
3-Mile	\$53,469.06
5-Mile	\$51,102.17

Radius	Average Household Income
1-Mile	\$61,792.90
3-Mile	\$62,068.53
5-Mile	\$59,268.01

Radius	Aggregate Household Income
1-Mile	\$144,758,914.54
3-Mile	\$1,572,630,765.25
5-Mile	\$3,962,013,396.91

**154K** GREENFIELD POPULATION

**\$3B** ANNUAL EXPENDITURES IN 5 MILE RADIUS

# DEMOGRAPHIC INFO

## CITY, STATE

**Greenfield, WI**

## POPULATION

**153,954**

## AVG. HH SIZE

**2.32**

## MEDIAN HH INCOME

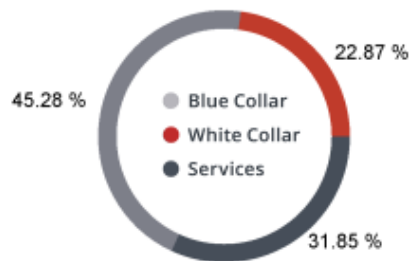
**\$51,876**

## HOME OWNERSHIP

Renters: **24,836**

Owners: **42,042**

## EMPLOYMENT



**49.71 %**

Employed

**1.66 %**

Unemployed

## EDUCATION

High School Grad: **32.87 %**

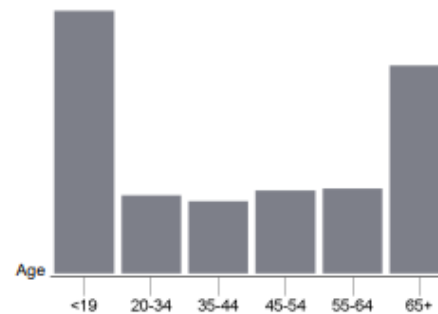
Some College: **22.70 %**

Associates: **7.00 %**

Bachelors: **24.06 %**

## GENDER & AGE

**48.67 %**   **51.33 %**



## RACE & ETHNICITY

White: **81.34 %**

Asian: **1.87 %**

Native American: **0.20 %**

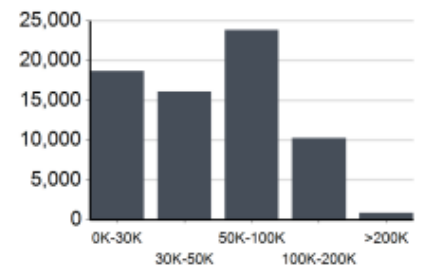
Pacific Islanders: **0.00 %**

African-American: **1.80 %**

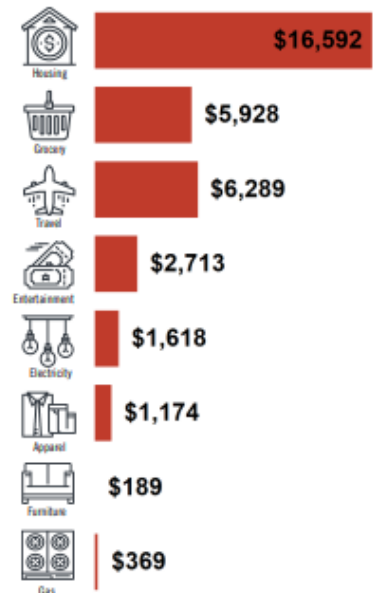
Hispanic: **9.97 %**

Two or More Races: **4.82 %**

## INCOME BY HOUSEHOLD



## HH SPENDING



# DISCLOSURE

## DISCLOSURE TO NON-RESIDENTIAL CUSTOMERS

Prior to negotiating on your behalf the brokerage firm, or an agent associated with the firm, must provide you the following disclosure statement:

## DISCLOSURE TO CUSTOMERS

You are a customer of the brokerage firm (hereinafter Firm). The Firm is either an agent of another party in the transaction or a subagent of another firm that is the agent of another party in the transaction. A broker or a salesperson acting on behalf of the Firm may provide brokerage services to you. Whenever the Firm is providing brokerage services to you, the Firm and its brokers and salespersons (hereinafter Agents) owe you, the customer, the following duties:

- (a) The duty to provide brokerage services to you fairly and honestly.
- (b) The duty to exercise reasonable skill and care in providing brokerage services to you.
- (c) The duty to provide you with accurate information about market conditions within a reasonable time if you request it, unless disclosure of the information is prohibited by law.
- (d) The duty to disclose to you in writing certain Material Adverse Facts about a property, unless disclosure of the information is prohibited by law (see lines 42-51).
- (e) The duty to protect your confidentiality. Unless the law requires it, the Firm and its Agents will not disclose your confidential information or the confidential information of other parties (see lines 23-41).
- (f) The duty to safeguard trust funds and other property held by the Firm or its Agents.
- (g) The duty, when negotiating, to present contract proposals in an objective and unbiased manner and disclose the advantages and disadvantages of the proposals.

Please review this information carefully. An Agent of the Firm can answer your questions about brokerage services, but if you need legal advice, tax advice, or a professional home inspection, contact an attorney, tax advisor, or home inspector. This disclosure is required by section 452.135 of the Wisconsin statutes and is for information only. It is a plain-language summary of the duties owed to a customer under section 452.133(1) of the Wisconsin statutes.

## CONFIDENTIALITY NOTICE TO CUSTOMERS

The Firm and its Agents will keep confidential any information given to the Firm or its Agents in confidence, or any information obtained by the Firm and its Agents that a reasonable person would want to be kept confidential, unless the information must be disclosed by law or you authorize the Firm to disclose particular information. The Firm and its Agents shall continue to keep the information confidential after the Firm is no longer providing brokerage services to you.

The following information is required to be disclosed by law:

1. Material Adverse Facts, as defined in Wis. Stat. § 452.01(5g) (see lines 42-51).
2. Any facts known by the Firm or its Agents that contradict any information included in a written inspection report on the property or real estate that is the subject of the transaction. To ensure that the Firm and its Agents are aware of what specific information you consider confidential, you may list that information below (see lines 35-41) or provide that information to the Firm or its Agents by other means. At a later time, you may also provide the Firm or its Agents with other information you consider to be confidential.

## CONFIDENTIAL INFORMATION: \_\_\_\_\_

**NON-CONFIDENTIAL INFORMATION** (the following information may be disclosed by the Firm and its Agents): *(Insert information you authorize to be disclosed, such as financial qualification information.)* \_\_\_\_\_

## DEFINITION OF MATERIAL ADVERSE FACTS

A "Material Adverse Fact" is defined in Wis. Stat. § 452.01(5g) as an Adverse Fact that a party indicates is of such significance, or that is generally recognized by a competent licensee as being of such significance to a reasonable party, that it affects or would affect the party's decision to enter into a contract or agreement concerning a transaction or affects or would affect the party's decision about the terms of such a contract or agreement. An "Adverse Fact" is defined in Wis. Stat. § 452.01(1e) as a condition or occurrence that a competent licensee generally recognizes will significantly and adversely affect the value of the property, significantly reduce the structural integrity of improvements to real estate, or present a significant health risk to occupants of the property; or information that indicates that a party to a transaction is not able to or does not intend to meet his or her obligations under a contract or agreement made concerning the transaction.

## NOTICE ABOUT SEX OFFENDER REGISTRY

You may obtain information about the sex offender registry and persons registered with the registry by contacting the Wisconsin Department of Corrections on the Internet at <http://www.doc.wi.gov> or by telephone at 608-240-5830.

# HIGH-VISIBILITY OFFICE BUILDING



**EXCLUSIVELY LISTED BY:**



**GRANT BRADLEY**  
Senior Advisor

📞 608-886-0899

✉️ [Grant.Bradley@ryzoCRE.com](mailto:Grant.Bradley@ryzoCRE.com)



**AMY HOTTER**  
Advisor

📞 608-640-7410

✉️ [Amy.Hotter@ryzoCRE.com](mailto:Amy.Hotter@ryzoCRE.com)