

**FOR
LEASE**

600

ANDOVER PARK EAST

TUKWILA, WA



GEORGE ROCKWELL, SIOR | PRINCIPAL

C: 206.679.7625

E: grockwell@andoverco.com

The information contained herein was obtained from sources believed reliable; however, The Andover Company, Inc. makes no guarantees, warranties or representations as to the completeness or accuracy thereof. The presentation of this property is submitted subject to errors, omissions, change of price or conditions, prior to sale or lease, or withdrawal without notice.



600

ANDOVER PARK EAST

PROPERTY HIGHLIGHTS

- 21,608 SF BUILDING
- 3,535 SF OFFICE
- 1,213 SF MEZZANINE DECK
- FREESTANDING BUILDING
- 24' CLEAR WAREHOUSE CEILINGS
- 4 DOCK HEIGHT DOORS
- 2 GRADE LEVEL DOORS
- CENTRAL TUKWILA LOCATION

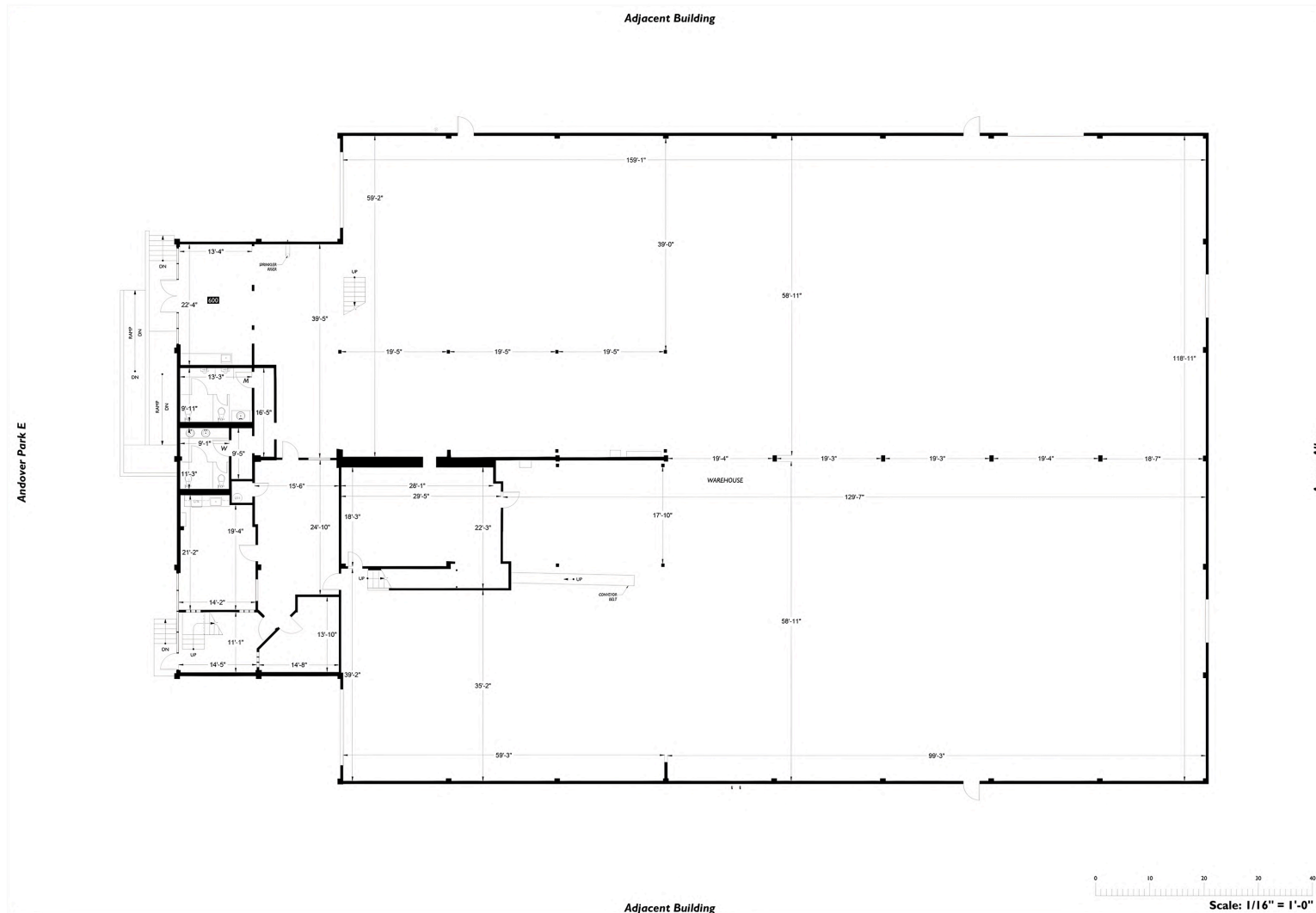


600 ANDOVER PARK EAST | TUKWILA, WA

FLOOR PLAN - SUITE 600

600

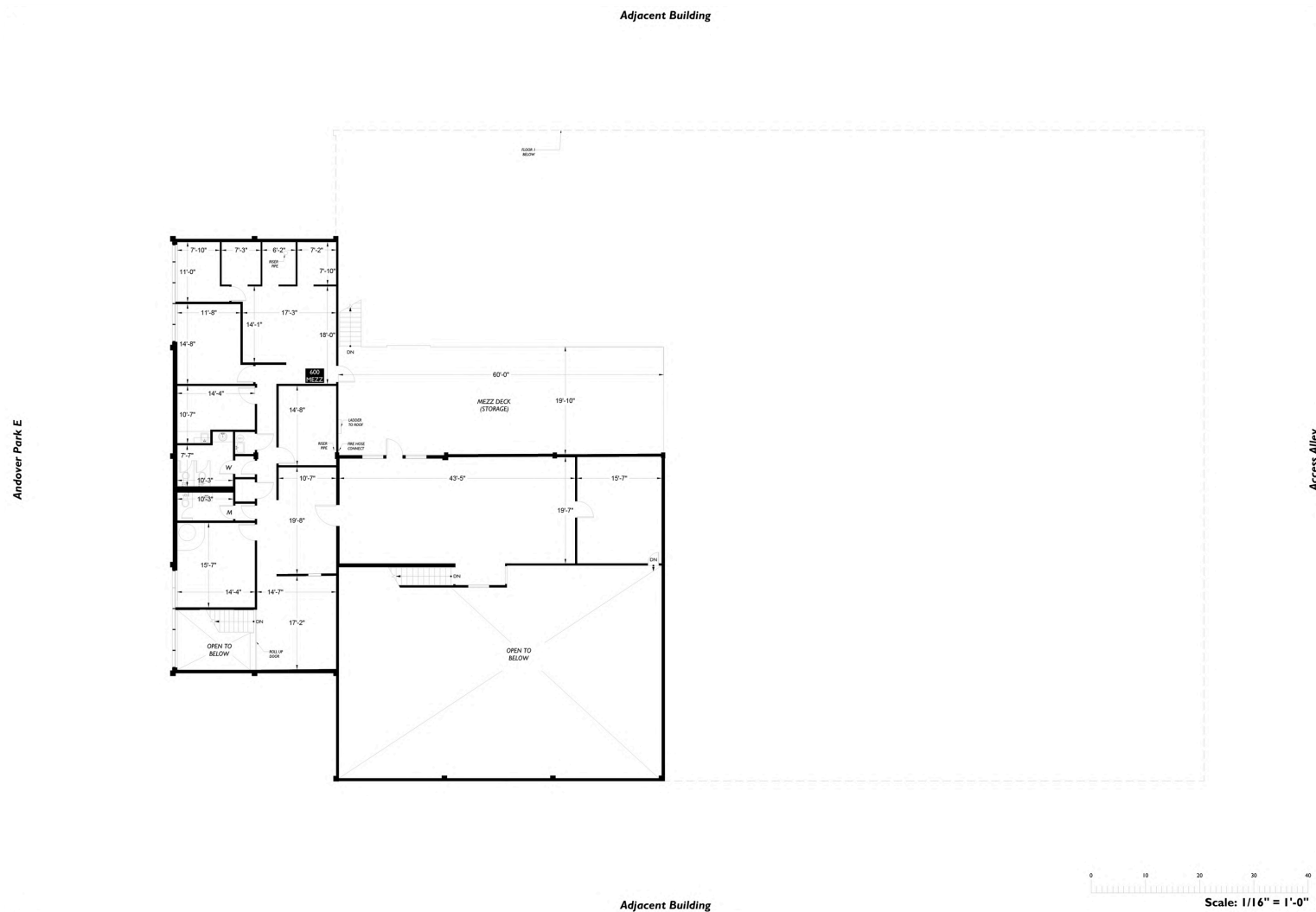
ANDOVER PARK EAST



FLOOR PLAN - MEZZANINE

600

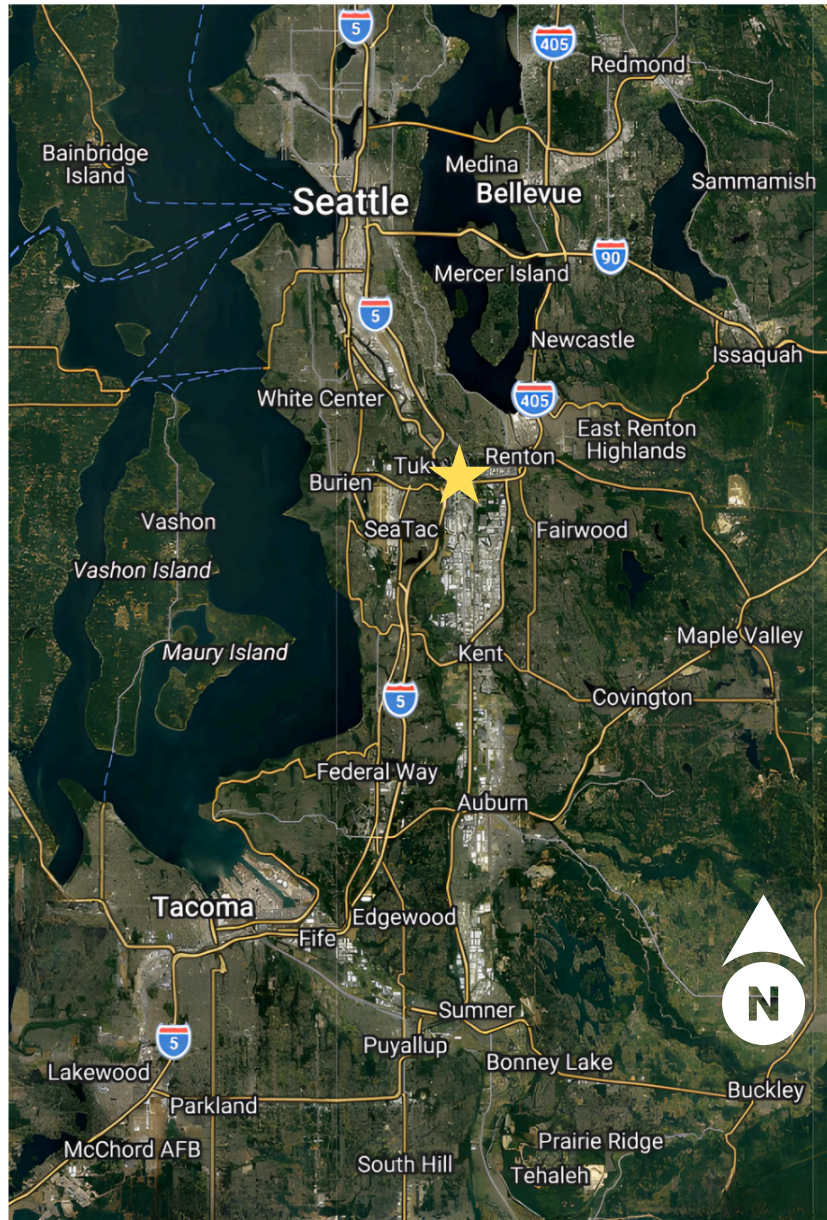
ANDOVER PARK EAST



DRIVE TIMES

600

ANDOVER PARK EAST



- HWY 18- 4 MIN
- I-5- 4 MIN
- I-405- 4 MIN
- HWY 167- 6 MIN
- SEATAC AIRPORT- 10 MIN
- PORT OF SEATTLE- 20 MIN
- PORT OF TACOMA- 30 MIN



**THE ANDOVER
COMPANY, INC.**

CORFAC INTERNATIONAL

GEORGE ROCKWELL, SIOR | PRINCIPAL

C: 206.679.7625

E: grockwell@andoverco.com

600

ANDOVER PARK EAST

TUKWILA, WA