

FOR LEASE

# OFFICE WITH YARD FOR LEASE

923-927 ARGUELLO ST, REDWOOD CITY, CA



## *Perfect Contractor's Office with Yard Space in Downtown Redwood City*

3 separate structures onsite

±3,300 SF building

±1,800 SF office

±1,500 SF warehouse

±500 SF storage trailer

±8,400 SF lot

**BRETT WEBER**

650.771.3000

brett.weber@kidder.com

LIC N° 00901454

**JOHN MCLELLAN**

415.418.9880

john.mclellan@kidder.com

LIC N° 01869489

**DREW RAMIREZ**

650.430.1433

drew.ramirez@kidder.com

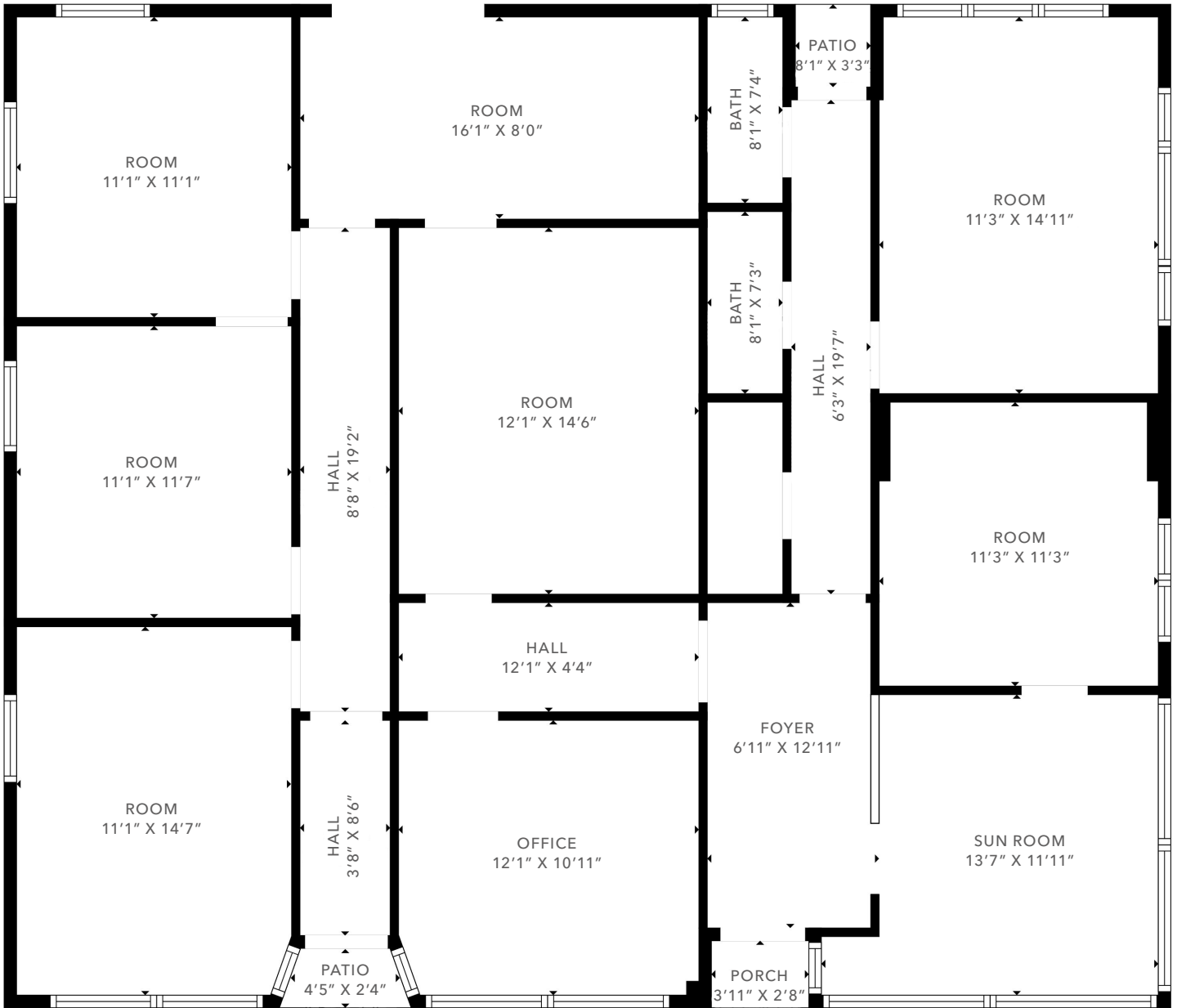
LIC N° 02209477

**KIDDER.COM**

This information supplied herein is from sources we deem reliable. It is provided without any representation, warranty, or guarantee, expressed or implied as to its accuracy. Prospective Buyer or Tenant should conduct an independent investigation and verification of all matters deemed to be material, including, but not limited to, statements of income and expenses. Consult your attorney, accountant, or other professional advisor.



# FLOOR PLAN



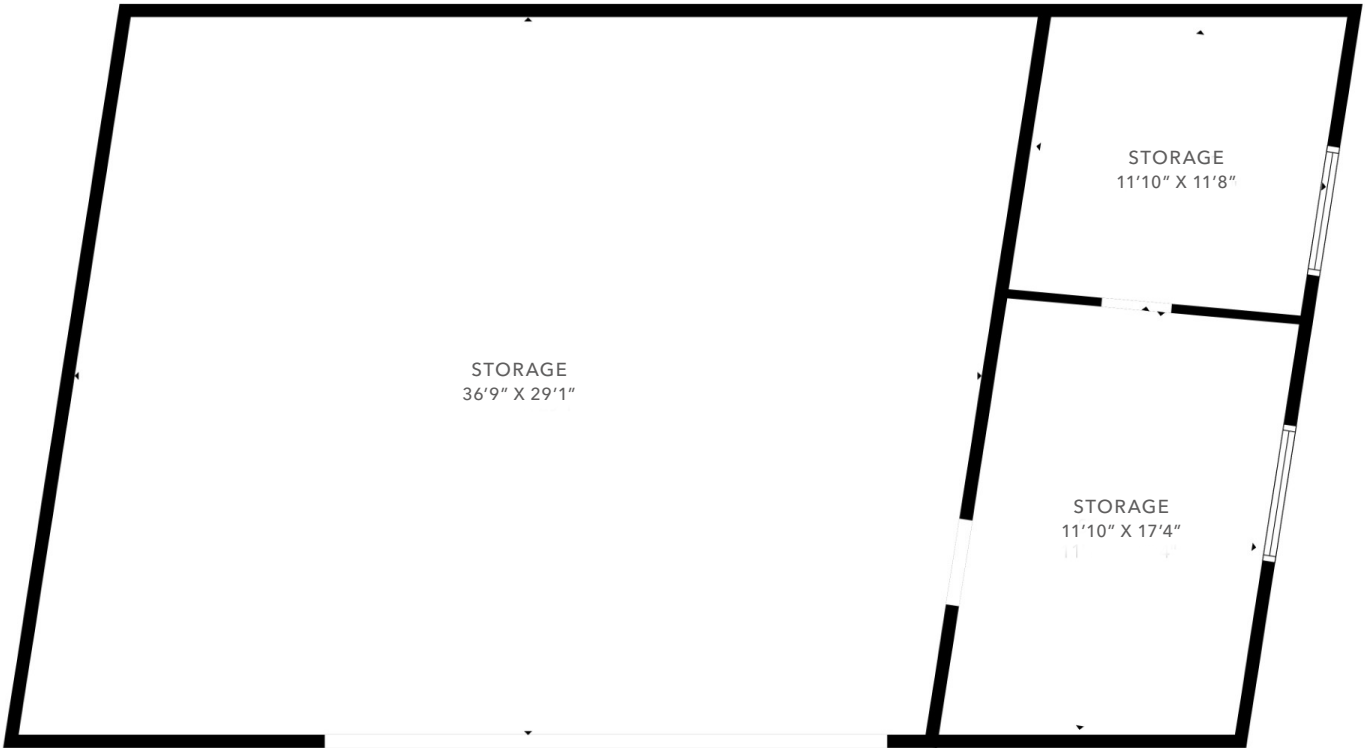
FLOOR PLAN NOT TO SCALE

[KIDDER.COM](http://KIDDER.COM)

This information supplied herein is from sources we deem reliable. It is provided without any representation, warranty, or guarantee, expressed or implied as to its accuracy. Prospective Buyer or Tenant should conduct an independent investigation and verification of all matters deemed to be material, including, but not limited to, statements of income and expenses. Consult your attorney, accountant, or other professional advisor.



# 2ND BLDG FLOOR PLAN

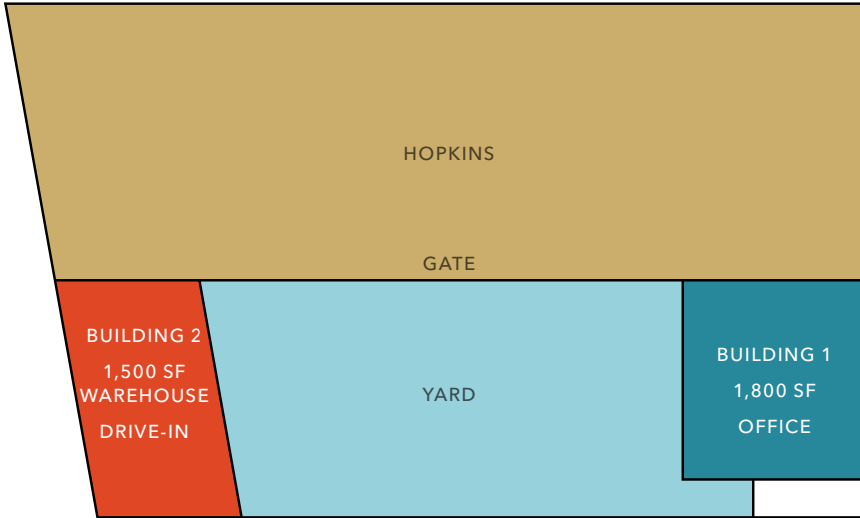


FLOOR PLAN NOT TO SCALE

[KIDDER.COM](http://KIDDER.COM)

This information supplied herein is from sources we deem reliable. It is provided without any representation, warranty, or guarantee, expressed or implied as to its accuracy. Prospective Buyer or Tenant should conduct an independent investigation and verification of all matters deemed to be material, including, but not limited to, statements of income and expenses. Consult your attorney, accountant, or other professional advisor.





SITE PLAN NOT TO SCALE

*±3,300 SF*

BUILDING SIZE

*±8,400 SF*

LOT SIZE

*NOW*

AVAILABLE



**KIDDER.COM**

This information supplied herein is from sources we deem reliable. It is provided without any representation, warranty, or guarantee, expressed or implied as to its accuracy. Prospective Buyer or Tenant should conduct an independent investigation and verification of all matters deemed to be material, including, but not limited to, statements of income and expenses. Consult your attorney, accountant, or other professional advisor.

**km** Kidder Mathews



This information supplied herein is from sources we deem reliable. It is provided without any representation, warranty, or guarantee, expressed or implied as to its accuracy. Prospective Buyer or Tenant should conduct an independent investigation and verification of all matters deemed to be material, including, but not limited to, statements of income and expenses. Consult your attorney, accountant, or other professional advisor.