

FOR SALE



COLDWELL BANKER
COMMERCIAL

PRIME
PROPERTIES

TOUR
HERE

1901 Railroad Avenue, Rifle, CO

- 4,160 SF Office Space & 4,686 SF Shop/Warehouse
- 4 - Parcel Subdivision for Commercial Development
 - 1.6 AC Zoned CS
 - **\$1,600,000**



Mike Foster, CCIM | mfoster@cbwest.com
Coldwell Banker Commercial Prime Properties

Direct: 970-244-6602
Mobile: 970-433-8374

131 N. 6th, St., Suite 2 00
Grand Junction, CO 81501

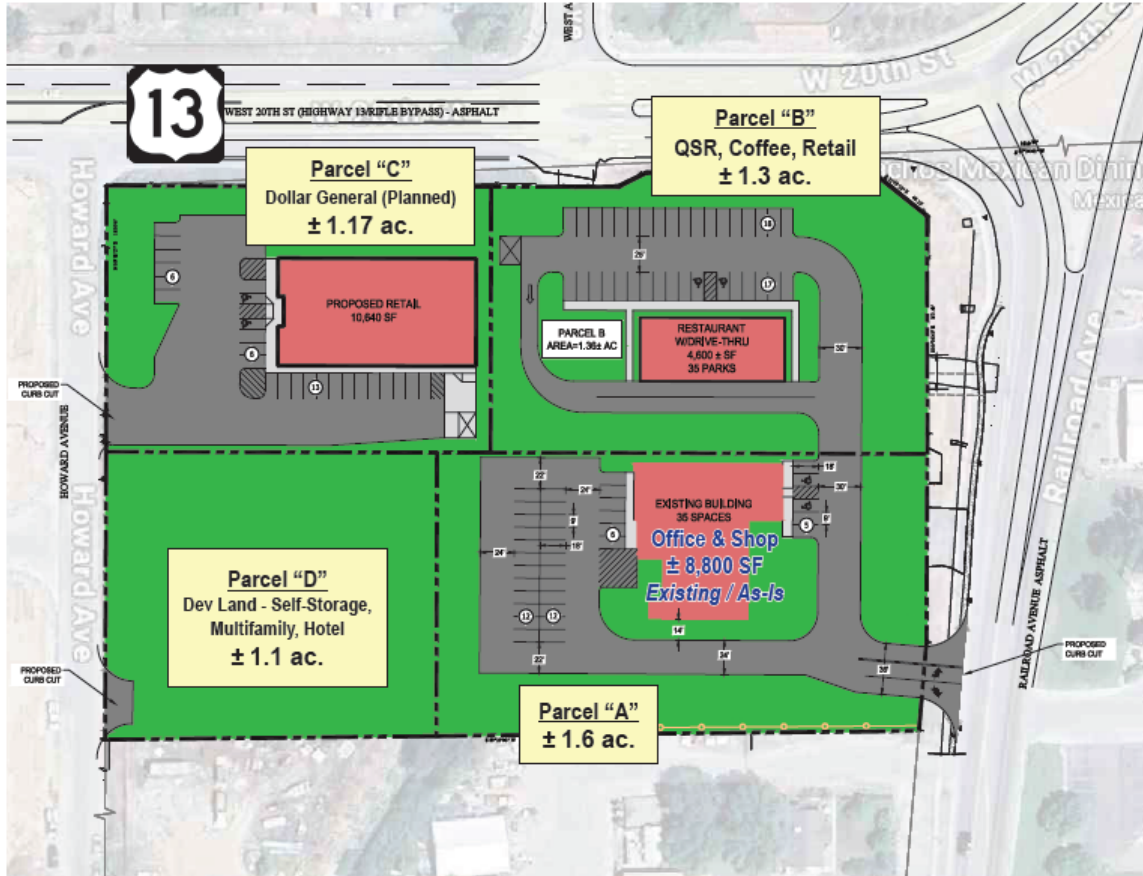
This information has been secured from sources we believe to be reliable, but we make no representations or warranties, expressed or implied, as to the accuracy of the information. References to square footage or age are approximate. Buyer must verify the information and bears all risk for any inaccuracies.

FOR SALE



COLDWELL BANKER COMMERCIAL

PRIME PROPERTIES



SALES PRICING

Parcel A - \$1.60 million

- 1.6 acres
- 4,800 SF office; 4,000 SF warehouse/shop space

Parcel B - \$550k

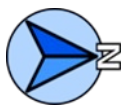
- 1.3 acres
- Development (QSR, Coffee)

Parcel C - UNDER CONTRACT

- 1.17 acres
- Dollar General (Planned)

Parcel D - \$250k

- 1.1 acres
- Commercial Development (Office, Hotel, Self-storage, many uses allowed)



Mike Foster, CCIM | mfoster@cbwest.com
Coldwell Banker Commercial Prime Properties

Direct: 970-244-6602
Mobile: 970-433-8374

131 N. 6th, St., Suite 200
Grand Junction, CO 81501

This information has been secured from sources we believe to be reliable, but we make no representations or warranties, expressed or implied, as to the accuracy of the information. References to square footage or age are approximate. Buyer must verify the information and bears all risk for any inaccuracies.



**COLDWELL BANKER
COMMERCIAL**

**PRIME
PROPERTIES**



Existing office/Warehouse



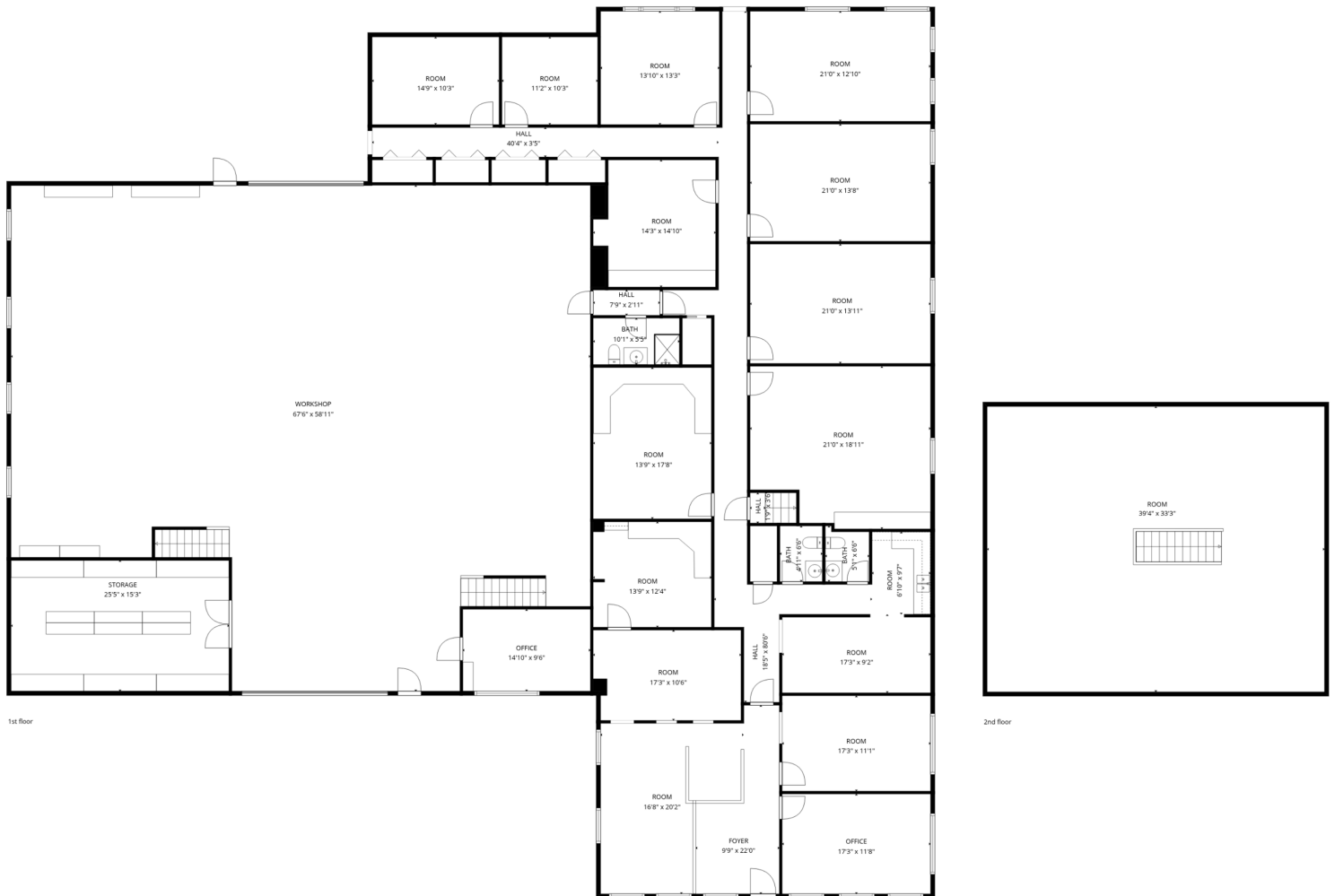
- Reception
- Twelve Offices
- Two Restrooms
- Inside Storage

- Two OH Doors
- Mezzanine Storage
- Office Access





1901 Railroad Avenue – Floor Plan



TOTAL: 5926 sq. ft

1st floor: 4619 sq. ft, 2nd floor: 1307 sq. ft

EXCLUDED AREAS: STORAGE: 401 sq. ft, WORKSHOP: 3438 sq. ft, WALLS: 284 sq. ft

SIZES AND DIMENSIONS ARE APPROXIMATE, ACTUAL MAY VARY.



**COLDWELL BANKER
COMMERCIAL**

**PRIME
PROPERTIES**



Mike Foster, CCIM | mfooster@cbcwest.com
Coldwell Banker Commercial Prime Properties

Direct: 970-244-6602
Mobile: 970-433-8374

131 N. 6th, St., Suite 2 00
Grand Junction, CO 81501

This information has been secured from sources we believe to be reliable, but we make no representations or warranties, expressed or implied, as to the accuracy of the information. References to square footage or age are approximate. Buyer must verify the information and bears all risk for any inaccuracies.