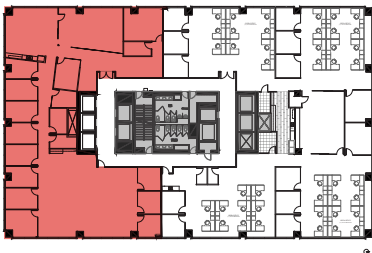
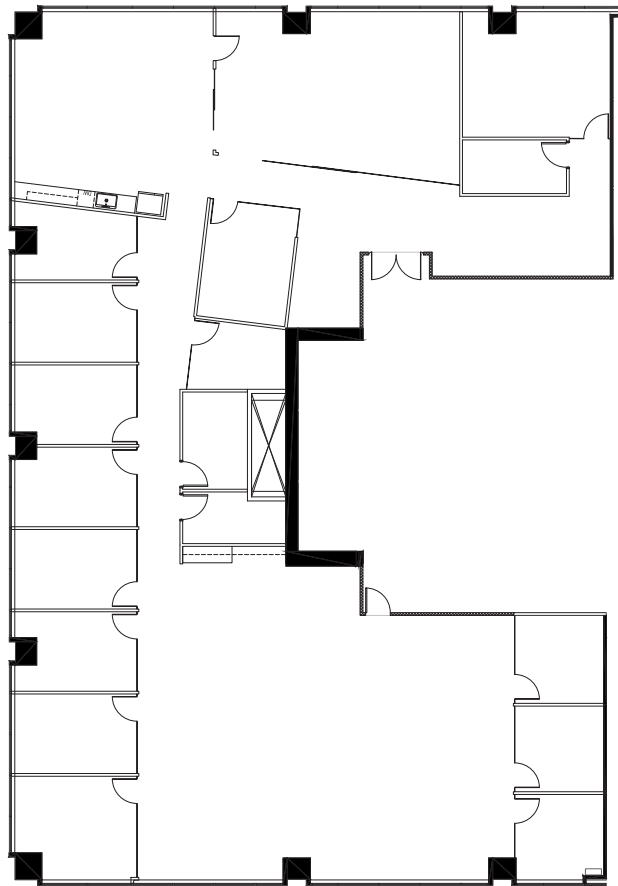


**refined,
curated
& capitalized.**

SUITE **1200** AREA **7,744 RSF**

the **410**

**410 17TH STREET
DENVER, COLORADO**



KEY PLAN

Jamie Gard
303.260.4341
Jamie.Gard@nmrk.com

Whitney Hake
303.260.4202
Whitney.Hake@nmrk.com

Grace Lessard
303.260.4210
Grace.Lessard@nmrk.com

NEWMARK

 **Cress Capital**