

PROPERTY INFORMATION

Property: 2758 Danley Court, Suite E
Paso Robles, CA

Lease Rate: \$1.00 /SF NNN (Est\$.25)

Lease Size: ± 3,648 sq. ft. (can be divided)

Type: Industrial

Zoning: I (Industrial Services)

Available: Now

APN/Parcel ID: 025-425-003

HIGHLIGHTS:

- Cutting-edge facility Includes 3,648/sf of warehouse space, including two offices and a reception space.
- Excellent 20-foot-high ceilings in the warehouse.
- Generous parking available on property.
- HVAC unit throughout space.
- Neighbors include JUSTIN Vineyards, San Antonio Winery, and IQMS. Close to Highways 101 and 46.

CONTACT:

ROD TRUJILLO

OWNER/BROKER

DRE #01388764

OFFICE: 805.439.4733 | CELL: 805.703.0999

ROD@TRUJILLO-GROUP.COM

The information contained herein has been obtained from the property's owner or other sources deemed reliable. While we have no reason to doubt its accuracy, we do not guarantee it.

FOR LEASE

±3,648 SQ. FT.

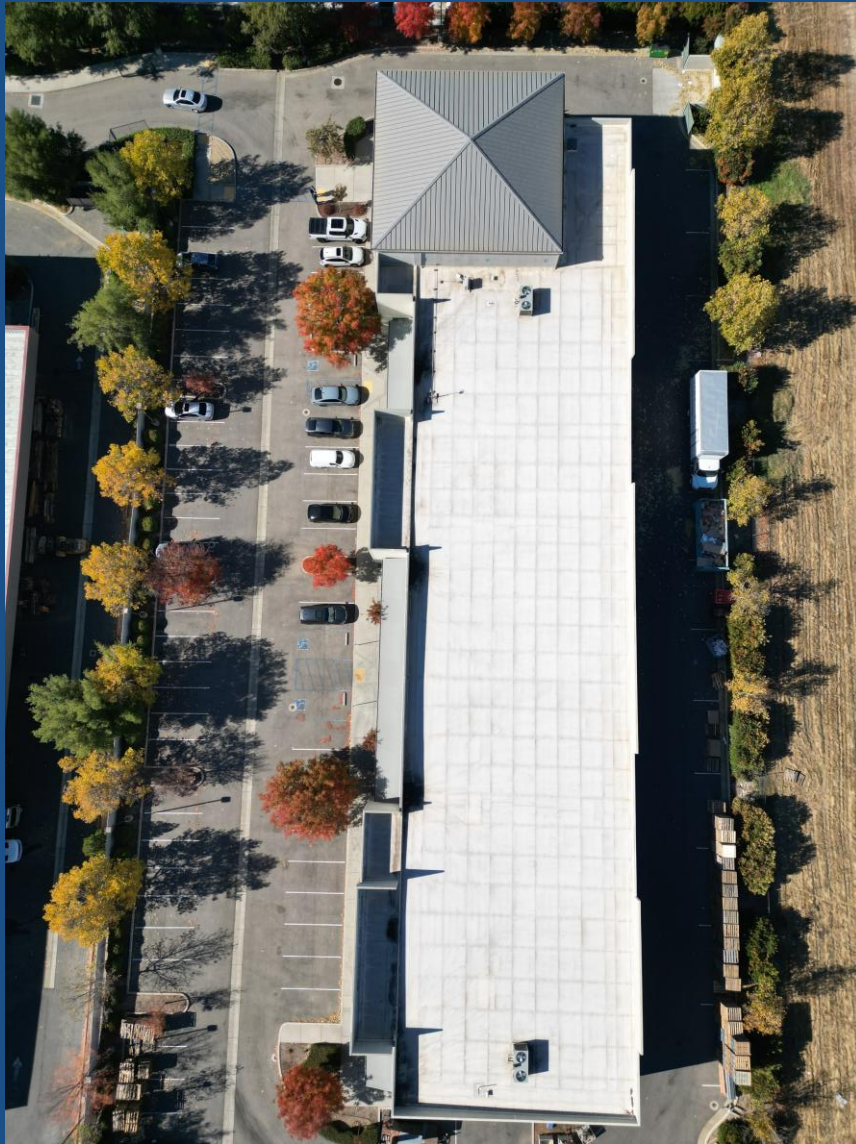
PRIME WAREHOUSE SPACE



TRUJILLO 
Commercial Real Estate
GROUP

570 Marsh St. | San Luis Obispo, CA 93401
www.Trujillo-Group.com

PROPERTY PHOTOS



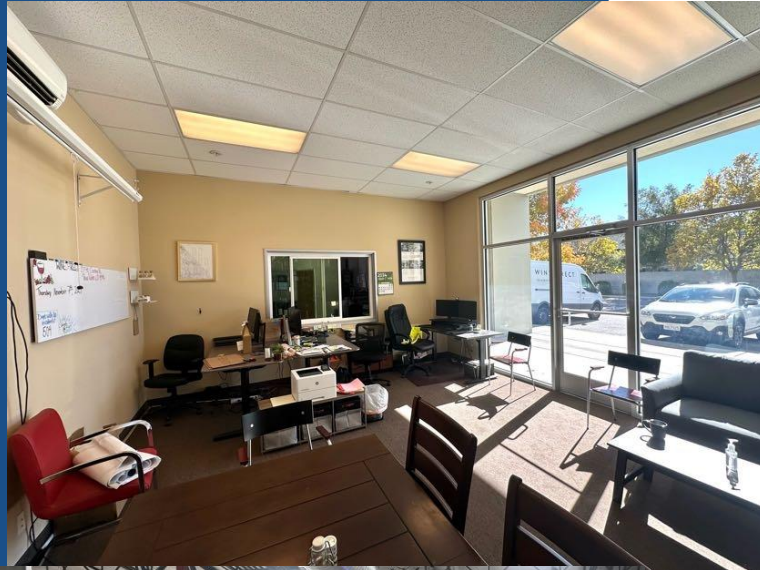
FOR LEASE
±3,648 SQ. FT.
PRIME WAREHOUSE SPACE

TRUJILLO 
Commercial Real Estate
GROUP

570 Marsh St., San Luis Obispo, CA 93401
www.Trujillo-Group.com

The information contained herein has been obtained from the property's owner or other sources deemed reliable. While we have no reason to doubt its accuracy, we do not guarantee it.

FOR LEASE
±3,648 SQ. FT.
PRIME WAREHOUSE SPACE



CONTACT:

ROD TRUJILLO

OWNER/BROKER : DRE #01388764

OFFICE: 805.439.4733 | CELL: 805.703.0999

ROD@TRUJILLO-GROUP.COM

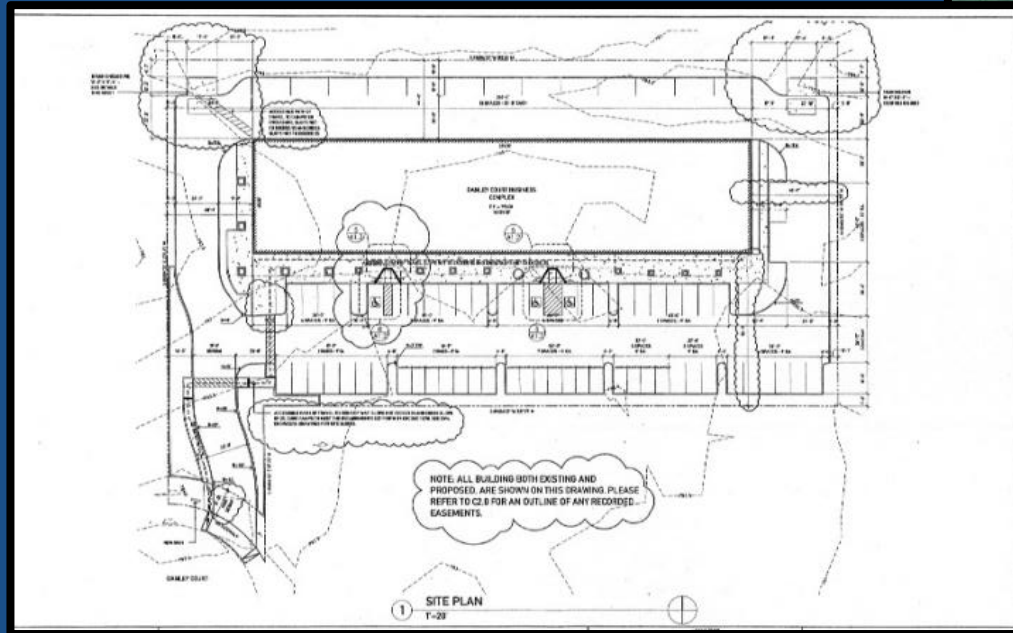
The information contained herein has been obtained from the property's owner or other sources deemed reliable. While we have no reason to doubt its accuracy, we do not guarantee it.

TRUJILLO
Commercial Real Estate
GROUP

570 Marsh St. | San Luis Obispo, CA 93401
www.Trujillo-Group.com

SITE MAP

FOR LEASE
±3,648 SQ. FT.
PRIME WAREHOUSE SPACE



CONTACT:

ROD TRUJILLO

OWNER/BROKER : DRE #01388764

OFFICE: 805.439.4733 | CELL: 805.703.0999

ROD@TRUJILLO-GROUP.COM

TRUJILLO 
Commercial Real Estate
GROUP

570 Marsh St. San Luis Obispo, CA 93401

www.Trujillo-Group.com

The information contained herein has been obtained from the property's owner or other sources deemed reliable. While we have no reason to doubt its accuracy, we do not guarantee it.