

## PROPERTY INFORMATION

Property: 2758 Danley Court Suite A  
Paso Robles, CA

Lease Rate: \$1.25/SF, NNN (Est. \$.25)

Lease Size: ± 3,584 sq. ft.

Type: Industrial

Zoning: I (Industrial Services)

Available: Now

APN/Parcel ID: 025-425-003

### HIGHLIGHTS:

- Cutting-edge facility Includes 3,584/sf of warehouse space, including two offices and a reception space.
- Excellent 20-foot-high ceilings in the warehouse.
- Generous parking available on property.
- HVAC unit throughout space.
- Neighbors include JUSTIN Vineyards, San Antonio Winery, and IQMS. Close to Highways 101 and 46.

### CONTACT:

ROD TRUJILLO

OWNER/BROKER

DRE #01388764

OFFICE: 805.439.4733 | CELL: 805.703.0999

ROD@TRUJILLO-GROUP.COM

**FOR LEASE**

±3,584 SQ. FT.

PRIME WAREHOUSE SPACE



**TRUJILLO**   
Commercial Real Estate  
**GROUP**

570 Marsh St. San Luis Obispo, CA 93401

[www.Trujillo-Group.com](http://www.Trujillo-Group.com)

# PROPERTY PHOTOS



FOR LEASE  
PRIME WAREHOUSE SPACE

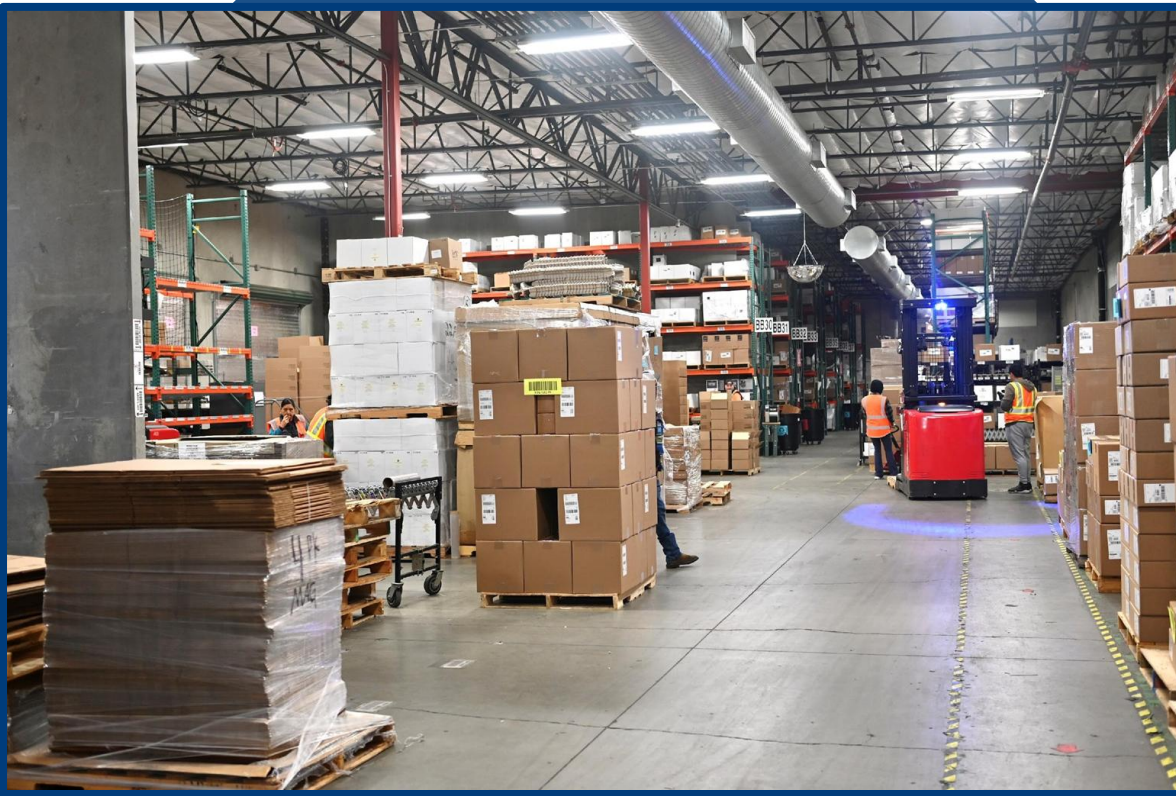


570 Marsh St., San Luis Obispo, CA

93401

[www.Trujillo-Group.com](http://www.Trujillo-Group.com)

The information contained herein has been obtained from the property's owner or other sources deemed reliable. While we have no reason to doubt its accuracy, we do not guarantee it.



FOR LEASE  
PRIME WAREHOUSE SPACE



**CONTACT:**

ROD TRUJILLO

OWNER/BROKER : DRE #01388764

OFFICE: 805.439.4733 | CELL: 805.703.0999

ROD@TRUJILLO-GROUP.COM

The information contained herein has been obtained from the property's owner or other sources deemed reliable. While we have no reason to doubt its accuracy, we do not guarantee it.

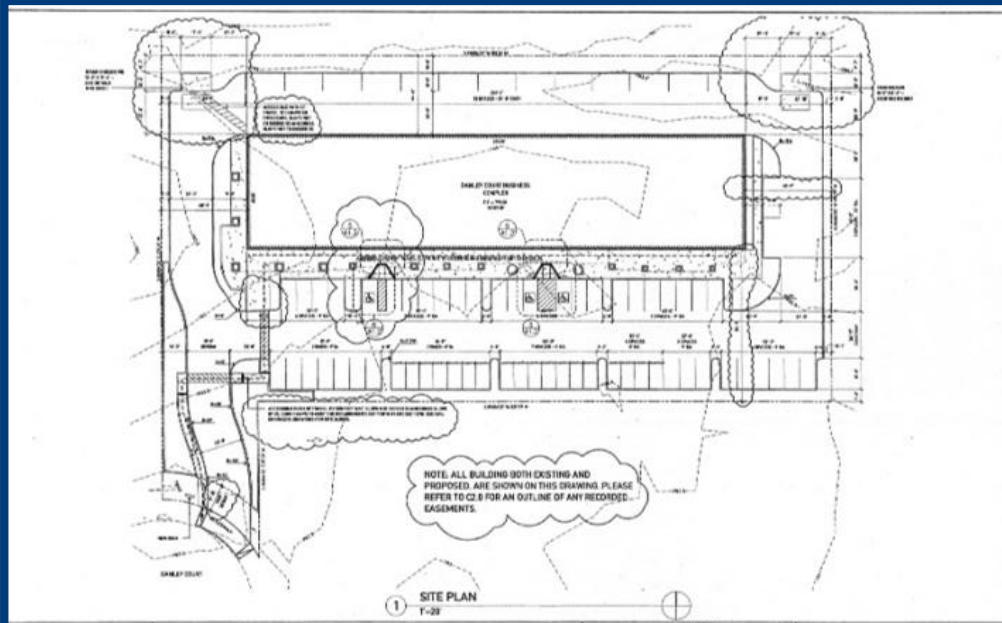
**TRUJILLO**   
Commercial Real Estate  
**GROUP**

570 Marsh St. San Luis Obispo, CA 93401

[www.Trujillo-Group.com](http://www.Trujillo-Group.com)

## SITE MAP

FOR LEASE  
PRIME WAREHOUSE SPACE



### CONTACT:

ROD TRUJILLO

OWNER/BROKER : DRE #01388764

OFFICE: 805.439.4733 | CELL: 805.703.0999

ROD@TRUJILLO-GROUP.COM

The information contained herein has been obtained from the property's owner or other sources deemed reliable. While we have no reason to doubt its accuracy, we do not guarantee it.

**TRUJILLO**   
Commercial Real Estate  
**GROUP**

570 Marsh St. San Luis Obispo, CA 93401  
[www.Trujillo-Group.com](http://www.Trujillo-Group.com)