

Industrial ★ SALE

LanCarte.com

328 THOMAS PL EVERMAN, TX 76140

10,000 SF ON 1.92 AC



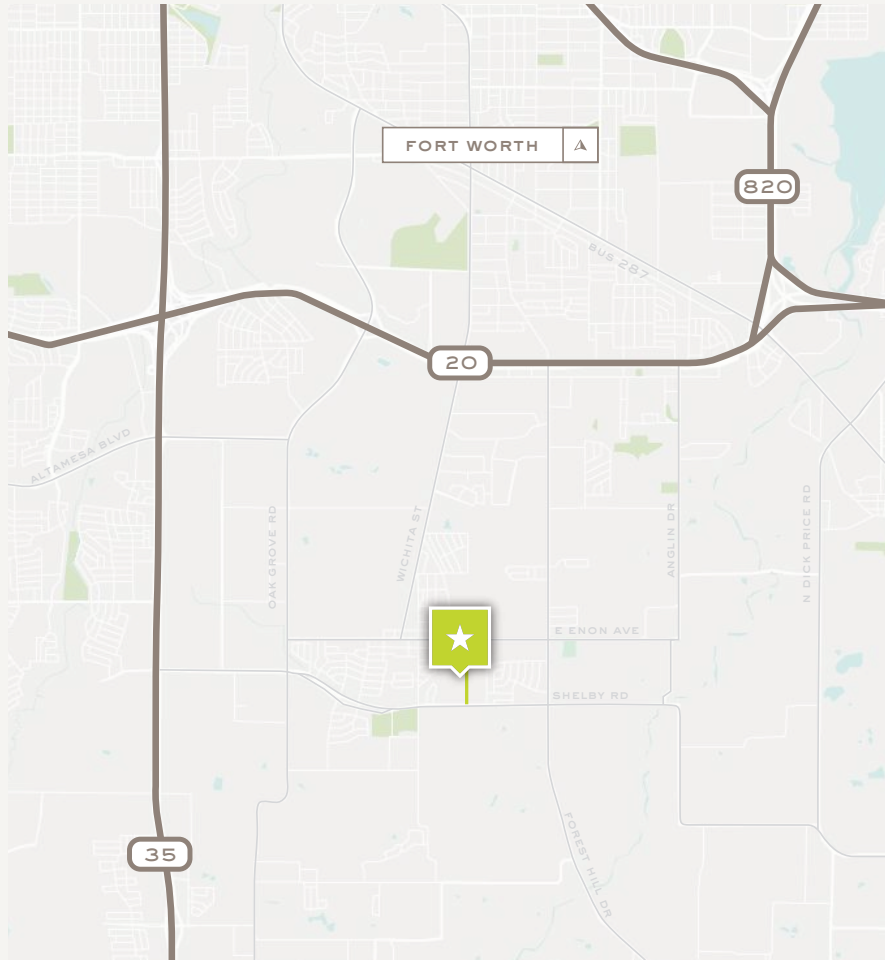
Daniel Shelley
512-461-5363
dshelley@lancarte.com

Riley Dow
817-681-2022
rdow@lancarte.com

Industrial ★ SALE

328 THOMAS PL

LanCarte.com



PROPERTY FEATURES

- 10,000 SF
 - 1,200 SF of Office
- 1.92 AC
- Three 20' x 14' Grade Level Doors
- One 20' x 14' Dock High Door
- 3 Phase 800 Amp Power
- Large, sprinklered, paint booth
- 14'-22.5' Clear Height
- Zoning: LI - Light Industrial
- Paint Booth (23'L x 13.6"W x 9'H)

LOCATION OVERVIEW

This property is strategically located near I-35W and I-20, offering prime access to the Dallas-Fort Worth metroplex. The area is known for its industrial growth, making it a prime spot for distribution, manufacturing, or logistics operations. Additionally, the property's location within Everman ensures proximity to a skilled workforce and local amenities.

SALE PRICE

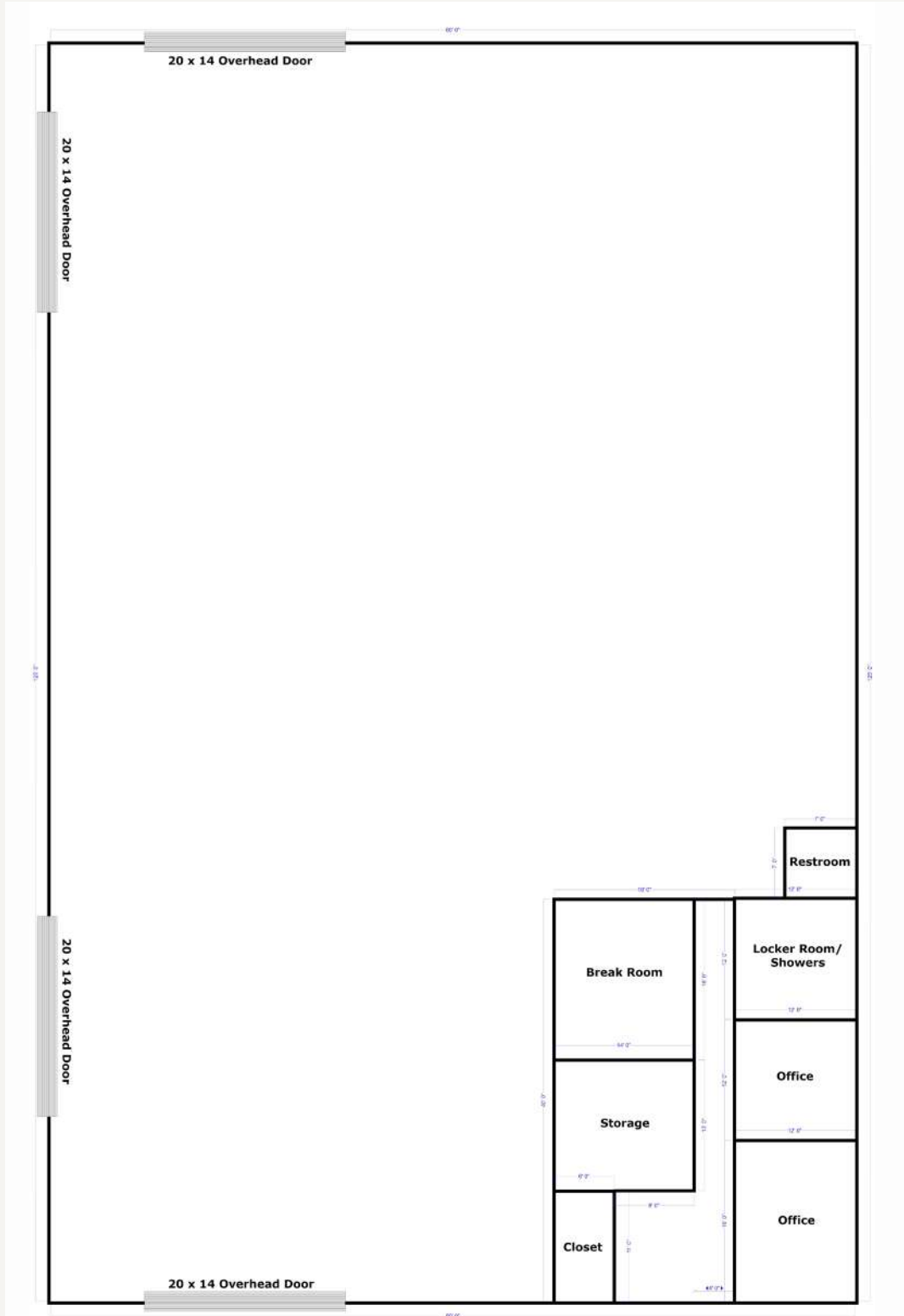
Contact Broker

Industrial ★ SALE

328 THOMAS PL

LanCarte.com

FLOOR PLAN



Industrial ★ SALE

328 THOMAS PL

LanCarte.com

EXTERIOR PHOTOS



Industrial ★ SALE

328 THOMAS PL

LanCarte.com

INTERIOR PHOTOS





LANCARTE

COMMERCIAL

BROKERAGE ★ PROPERTY MANAGEMENT

Relentlessly Pursuing What Matters

Riley Dow

817-681-2022

rdow@lancarte.com

Daniel Shelley

512-461-5363

dshelley@lancarte.com

The information provided herein was obtained from sources believed to be reliable. However, LanCarte Commercial makes no guaranties, warranties or representations as to the completeness or accuracy thereof. The presentation of this property is submitted subject to errors, omissions, change of price or conditions, prior to sale or lease, or withdrawal without notice. Copyright 2026 LanCarte Commercial Real Estate, LLC.