

PROPERTY FOR LEASE

Complete Care Building

18200 Ten Mile Road Eastpointe, MI 48021



CORFAC INTERNATIONAL



Property Highlights

- Professional Office Building
- 1,639 Square Feet For Lease
- 4 Exam Room Medical Suite
- Available for Medical or Dental
- Close Proximity to I-94
- Building Signage



FOR MORE INFORMATION:

Al Iafrate, SIOR
Senior Vice President
248.637.7791
aiafrate@lmcap.com



CONNECT WITH US

248.637.9700 | www.Lmcap.com

Information contained herein was obtained from sources deemed to be reliable but is not guaranteed. Subjects to prior sales, changes of price or withdrawal.

PROPERTY FOR LEASE

Complete Care Building

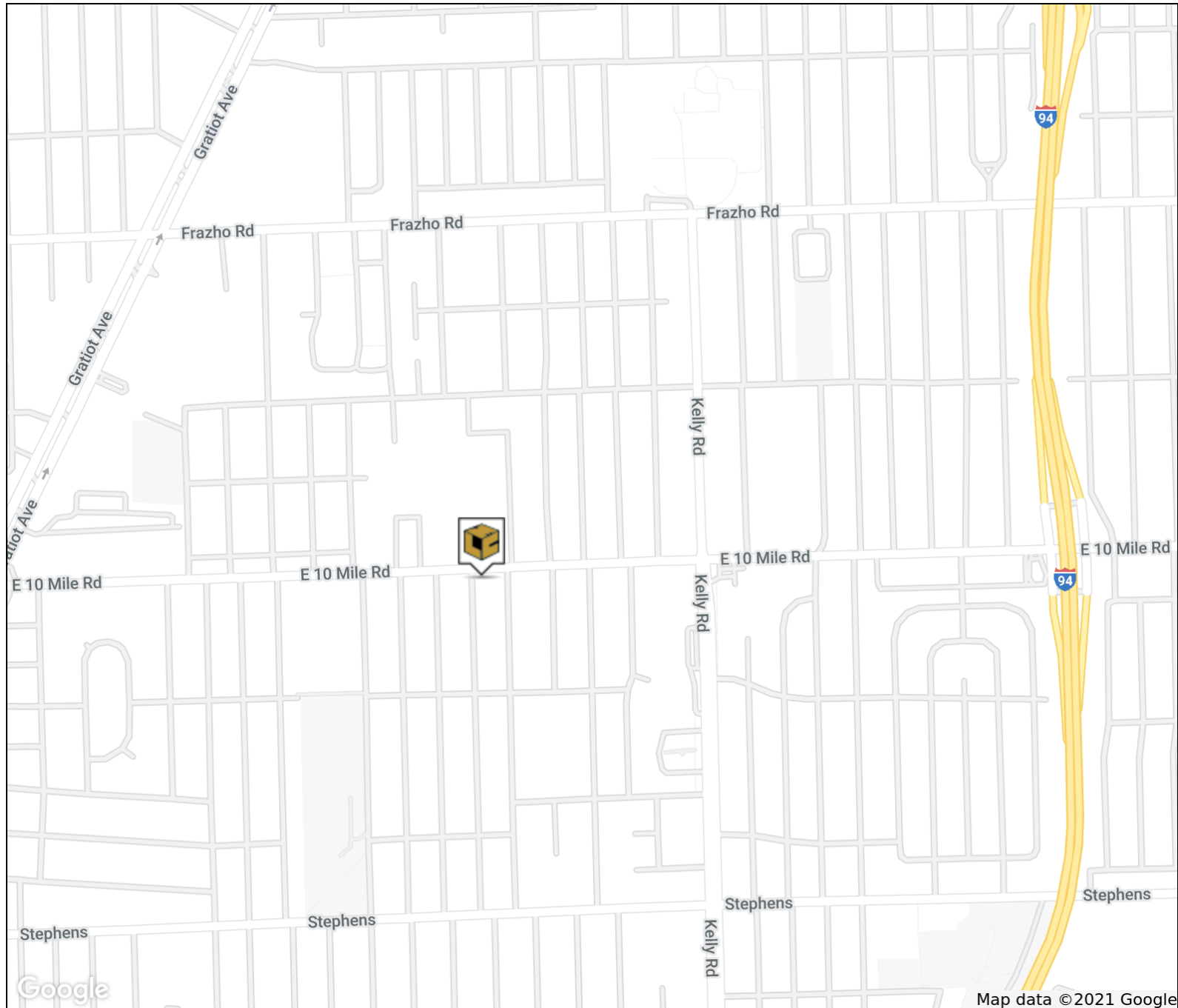
18200 Ten Mile Road Eastpointe, MI 48021



L. MASON CAPITANI

CORFAC INTERNATIONAL

RETAILER MAP



FOR MORE INFORMATION:

Al Iafrate, SIOR
Senior Vice President
248.637.7791
aiafrate@Lmcap.com



CONNECT WITH US

248.637.9700 | www.Lmcap.com

Information contained herein was obtained from sources deemed to be reliable but is not guaranteed. Subjects to prior sales, changes of price or withdrawal.

PROPERTY FOR LEASE

Complete Care Building

18200 Ten Mile Road Eastpointe, MI 48021



CORFAC INTERNATIONAL

OFFICE PROPERTY DETAILS

Location Information

Street Address	18200 Ten Mile Road
City, State, Zip	Eastpointe, MI 48021
County	Macomb
Cross-Streets	10 Mile Rd & Kelly Rd
Nearest Highway	I-94 & I-696

Building Information

Building Size	4,125 SF
Building Class	C
Occupancy %	61%
Tenancy	Multiple
Number of Floors	1
Year Built	1988
Gross Leasable Area	4,125 SF
Load Factor	0.0%
Annual Escalations	\$0.50/SF
Partition Allowance	Negotiable

Lease Rate:

**\$21.50 SF/yr
Modified Gross**

Annual Escalations:

\$0.50

Property Information

Property Type	Office
Property Subtype	Medical
Zoning	O-1
Lot Size	4,125 SF
APN #	02-14-29-204-001

Parking & Transportation

Parking Type	Surface
Parking Ratio	7.27

Available Suites

Suite 100 - 1,639 RSF	\$21.50 Modified Gross
-----------------------	------------------------

FOR MORE INFORMATION:

Al Iafrate, SIOR
Senior Vice President
248.637.7791
aiafrate@Lmcap.com



CONNECT WITH US

248.637.9700 | www.Lmcap.com

Information contained herein was obtained from sources deemed to be reliable but is not guaranteed. Subjects to prior sales, changes of price or withdrawal.

PROPERTY FOR LEASE

Complete Care Building

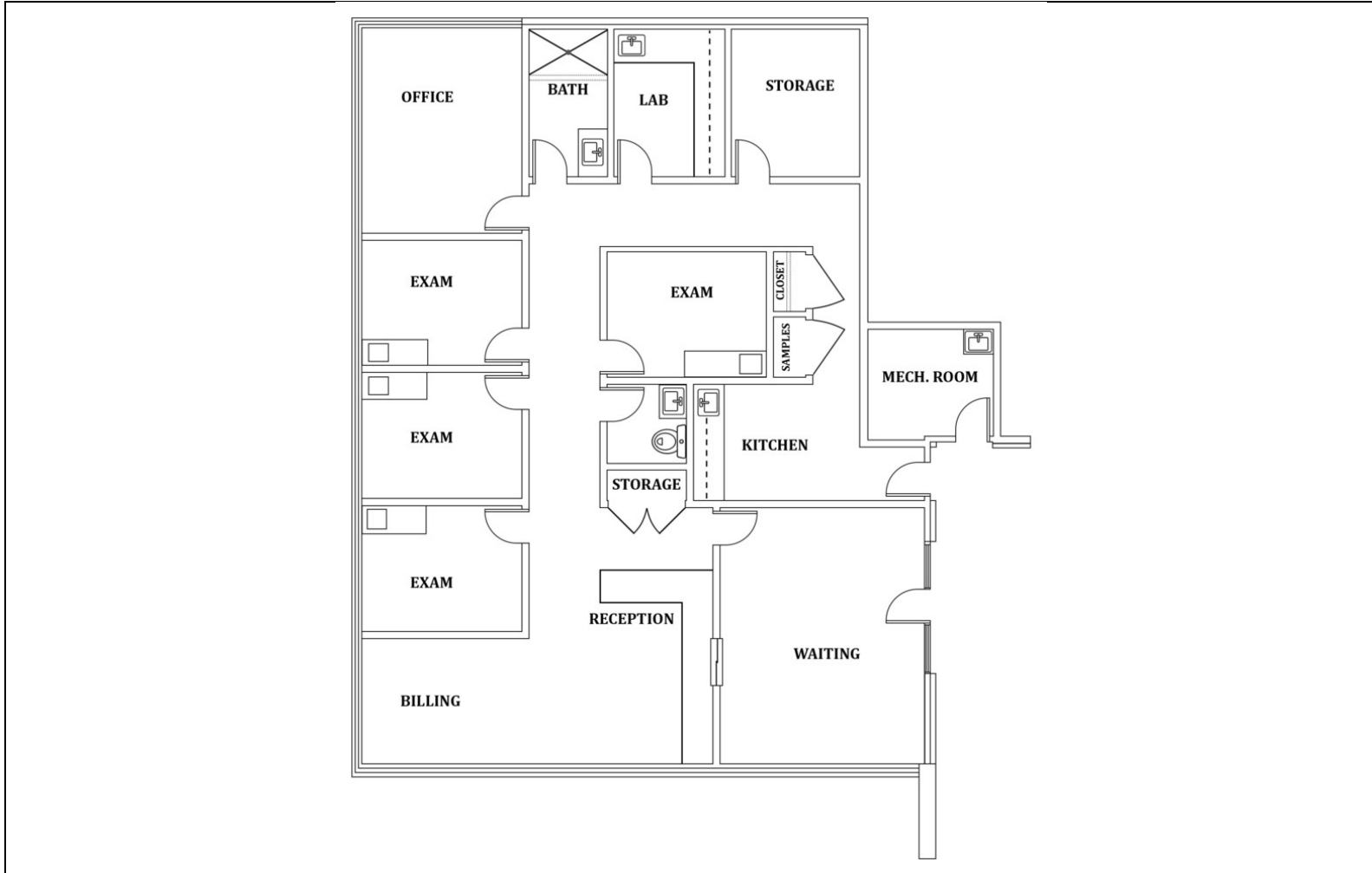
18200 Ten Mile Road Eastpointe, MI 48021



L. MASON CAPITANI

CORFAC INTERNATIONAL

SUITE 100 FLOOR PLAN



Available Space

Suite	Tenant	Lease Type	Lease Rate	Size (SF)
Suite 100	Available	Modified Gross	\$21.50 SF/yr	1,639 RSF

FOR MORE INFORMATION:

Al Iafrate, SIOR
Senior Vice President
248.637.7791
aiafrate@Lmcap.com



CONNECT WITH US

248.637.9700 | www.Lmcap.com

Information contained herein was obtained from sources deemed to be reliable but is not guaranteed. Subjects to prior sales, changes of price or withdrawal.