



BOYNTON BEACH QUADPLEX

2651 SE 2nd St, Boynton Beach, FL 33435

FOR SALE



ABOUT APEX CAPITAL REALTY

APEX Capital Realty is an independent commercial real estate brokerage firm. We work directly with a diverse number of real estate and business owners in order to create unique, fulfilling, and lucrative opportunities in the market.

APEX Capital Realty is composed of industry experts and specialists which possess an unparalleled understanding of the unique dynamics and trends that drive the current real estate and business markets. We believe in having a transformative impact in our industry through leadership and advocacy which helps push the creative boundary of what can be achieved. With collaboration ingrained in our company culture, our commercial advisors work hand-in-hand with our clients in order to reach optimal results.



EXECUTIVE SUMMARY

Apex capital realty is excited to present 2651 SE 2nd St, Boynton Beach, FL, a well kept, income-producing quadplex in a thriving pocket of Palm Beach county

This investment property offers a rare opportunity to acquire a fully leased quadplex generating consistent monthly income in a high demand palm beach county neighborhood. With 4 tenants and a history of reliable payments, this property is perfect for investors seeking stable, hassle-free cash flow with room to increase the value through rental upside.

PROPERTY OVERVIEW

FULLY LEASED

Enjoy peace of mind with a low maintenance, move-in-ready property.

UNIT MIX

Three Studios \$1400,\$1000,\$900
3-Bathroom Units: Rented at \$2,900

BUILDING SIZE

2,298 SF

LOT SIZE

10,110 SF

GROSS REVENUE

\$6,200/month or \$66,350,000/year.

ZONING

R2

ASKING PRICE

\$750,000



PROPERTY HIGHLIGHTS



Dependable Income Stream

Apex Capital Realty is pleased to present 2651 SE 2nd St, Boynton Beach, FL, a fully leased, income-producing quadplex located in a strong Palm Beach County submarket. The property delivers consistent monthly cash flow with four in-place tenants and a solid history of reliable rent payments, making it an ideal hands-off investment.

Prime Palm Beach County Location

Situated in a thriving pocket of Boynton Beach, this property benefits from strong rental demand driven by its proximity to major roadways, employment centers, retail, and coastal amenities. The area continues to attract renters seeking affordability without sacrificing access to South Florida's lifestyle.

Investment Opportunity

This fully renovated and fully leased quadplex offers immediate income with minimal maintenance. The unit mix provides built-in diversification and future rental upside, positioning the asset well for long-term appreciation and stable returns.

Don't Miss This Opportunity

This is a rare chance to acquire a stabilized, well-kept multifamily asset in a growing Palm Beach County market. Ideal for investors seeking dependable income today with upside potential tomorrow.

BOYNTON BEACH, FL: PALM BEACH COUNTY'S COASTAL SWEET SPOT



Small-Town Feel with Coastal Convenience

Boynton Beach delivers a relaxed seaside lifestyle while remaining centrally positioned between West Palm Beach and Delray Beach. Known for its laid-back vibe, strong neighborhoods, and accessibility, Boynton Beach offers residents an easygoing coastal atmosphere without giving up convenience.

Outdoor & Waterfront Lifestyle

From pristine beaches and Oceanfront Park to boating, fishing, and watersports along the Intracoastal Waterway, Boynton Beach is built for outdoor living. Miles of shoreline, parks, and nature preserves make it ideal for those who value sunshine, fresh air, and an active lifestyle year-round.

Dining, Shopping & Entertainment

Boynton Beach features a growing mix of waterfront dining, local favorites, and everyday conveniences along Federal Highway and nearby town centers. Whether it's fresh seafood, casual cafés, or live music events, the area offers a comfortable yet lively social scene.

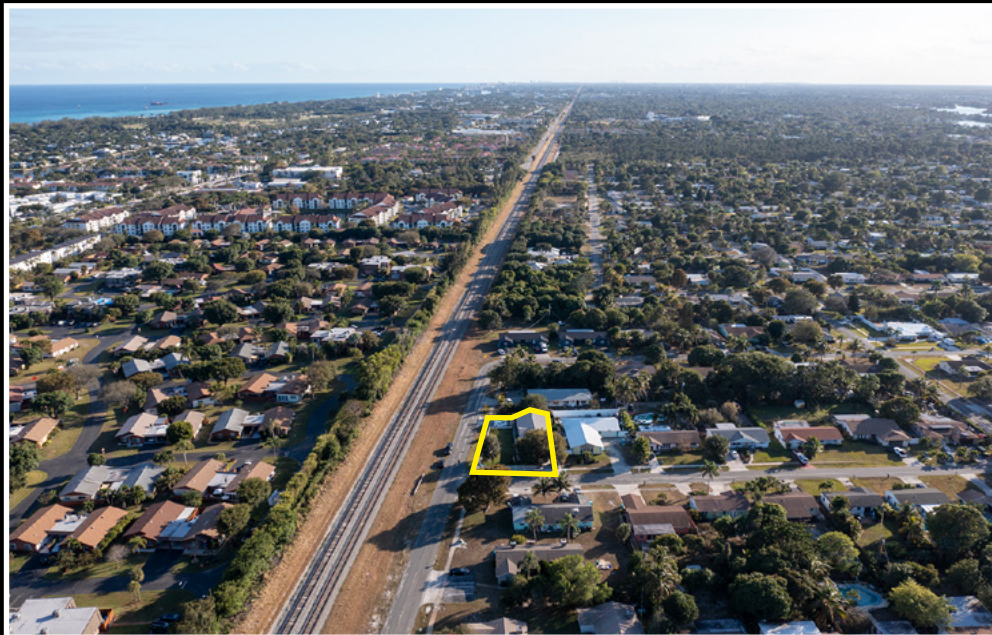
Strong Community Feel

The city is known for its welcoming, community-oriented character. Seasonal festivals, farmers markets, and neighborhood events create a connected environment that appeals to families, professionals, and retirees alike.

Strategic Location in South Palm Beach County

Living in Boynton Beach means easy access to major employment hubs, beaches, and cultural destinations throughout Palm Beach County—while still enjoying a more affordable, less congested alternative to neighboring coastal cities.

AERIAL PHOTOS



INTERIOR PHOTOS



RETAIL MAP





561 NE 79 ST - SUITE 420

Miami, FL 33138

www.APEXCAPITALREALTY.com

CARL GORMAN

COMMERCIAL ADVISOR
(305) 302-9787

CARL@APEXCAPITALREALTY.COM

RICARDO LAY

COMMERCIAL ADVISOR
(305) 934-4977

RECARDO@APEXCAPITALREALTY.COM

LET'S SIMPLIFY YOUR DEAL!

REAL ESTATE + COMMERCIAL INSURANCE
IN ONE SEAMLESS PROCESS.

**GET A QUOTE FROM
APEX INSURANCE TODAY!**