



NORTHRIDGE PARK

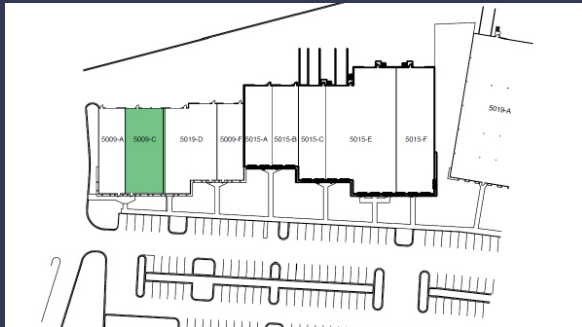
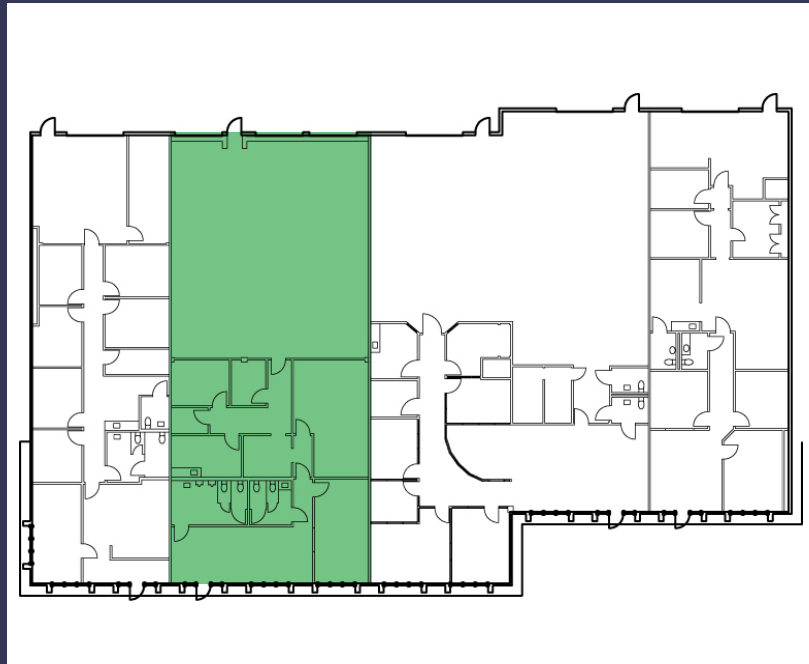
SPACE AVAILABLE



BACK TO HOME

5009-C W. W.T. HARRIS BLVD.

SF AVAILABLE	3,989 SF
OFFICE AREA	2,084 SF
GRADE LEVEL DOORS	3
CLEAR HEIGHT	13' 6"



5009-C
3,989 SF

