

ENLARGED EGRESS FLOOR PLAN - WEST SIDE UPPER LEVEL

SCALE: 1/4" = 1'-0"

HATCH DESIGN ARCHITECTURE
 200 WEST 36TH ST. BOISE, IDAHO 83714
 OFFICE: (208) 475-5204
 HATCH DESIGN ARCHITECTURE

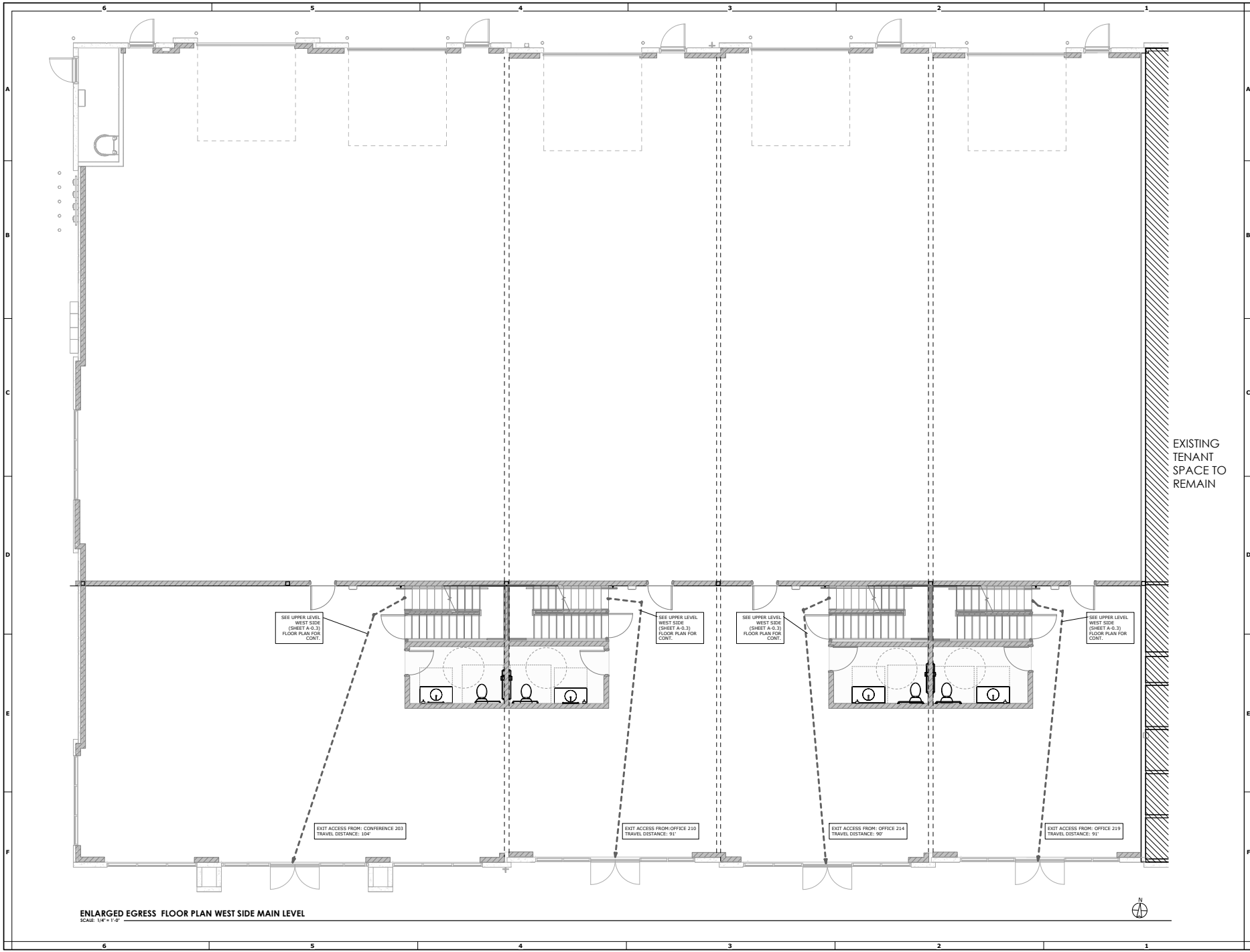
REGISTERED ARCHITECT
 STATE OF IDAHO
 ARCHITECT NO. 10000

NEW TENANT IMPROVEMENT FOR:
CHISHOLM TI - NAMPA
 EAST CHISHOLM DRIVE, NAMPA, ID

DATE: SEPT. 2025
 DRAWN BY: WS
 CHECKED BY: CS
 JOB NUMBER: MKT25

EGRESS FLOOR PLAN
 WEST SIDE
 UPPER LEVEL

A-0.3



ENLARGED EGRESS FLOOR PLAN WEST SIDE MAIN LEVEL
SCALE: 1/4" = 1'-0"

EXISTING
TENANT
SPACE TO
REMAIN

HATCH DESIGN ARCHITECTURE
200 WEST 36TH ST. BOISE, IDAHO 83714
OFFICE: (208) 475-5204
HATCH DESIGN ARCHITECTURE



PROFESSIONAL ARCHITECT
STATE OF IDAHO
NO. 10000
EXPIRES 12/31/2025
HATCH DESIGN ARCHITECTURE
200 WEST 36TH ST. BOISE, IDAHO 83714
OFFICE: (208) 475-5204
HATCH DESIGN ARCHITECTURE

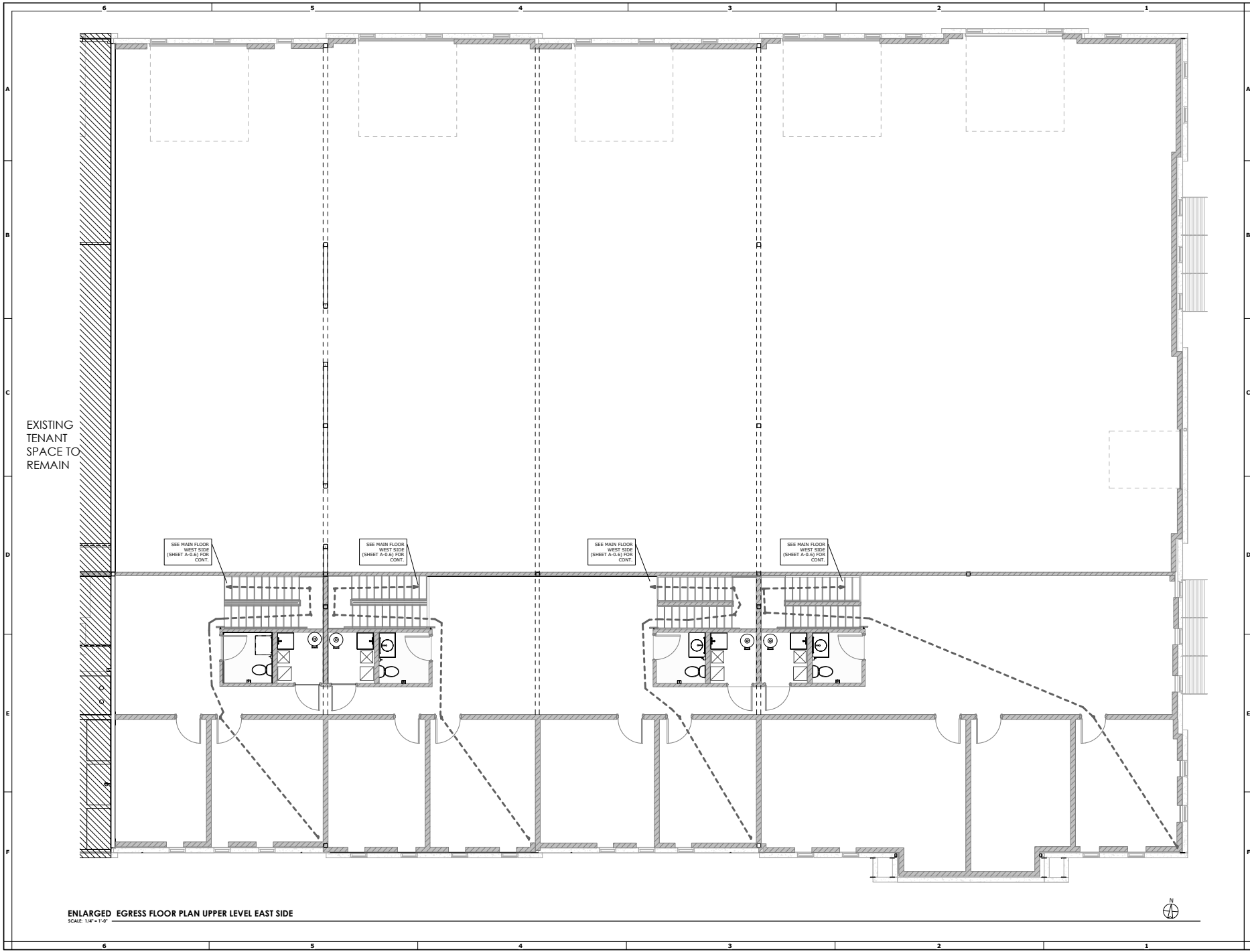


NEW TENANT IMPROVEMENT FOR:
CHISHOLM TI - NAMPA
EAST CHISHOLM DRIVE, NAMPA, ID

DATE: SEPT. 2025
DRAWN BY: WS
CHECKED BY: CS
JOB NUMBER: MKT25

EGRESS
FLOOR PLAN
WEST SIDE
MAIN LEVEL

A-0.4



EXISTING
TENANT
SPACE TO
REMAIN

SEE MAIN FLOOR
WEST SIDE
(SHEET A-0.6) FOR
CONT.

SEE MAIN FLOOR
WEST SIDE
(SHEET A-0.6) FOR
CONT.

SEE MAIN FLOOR
WEST SIDE
(SHEET A-0.6) FOR
CONT.

SEE MAIN FLOOR
WEST SIDE
(SHEET A-0.6) FOR
CONT.

ENLARGED EGRESS FLOOR PLAN UPPER LEVEL EAST SIDE

SCALE: 1/4" = 1'-0"



HATCH DESIGN ARCHITECTURE
 200 WEST 36TH ST. BOISE, IDAHO 83714
 OFFICE: (208) 475-5204
 HATCH DESIGN ARCHITECTURE

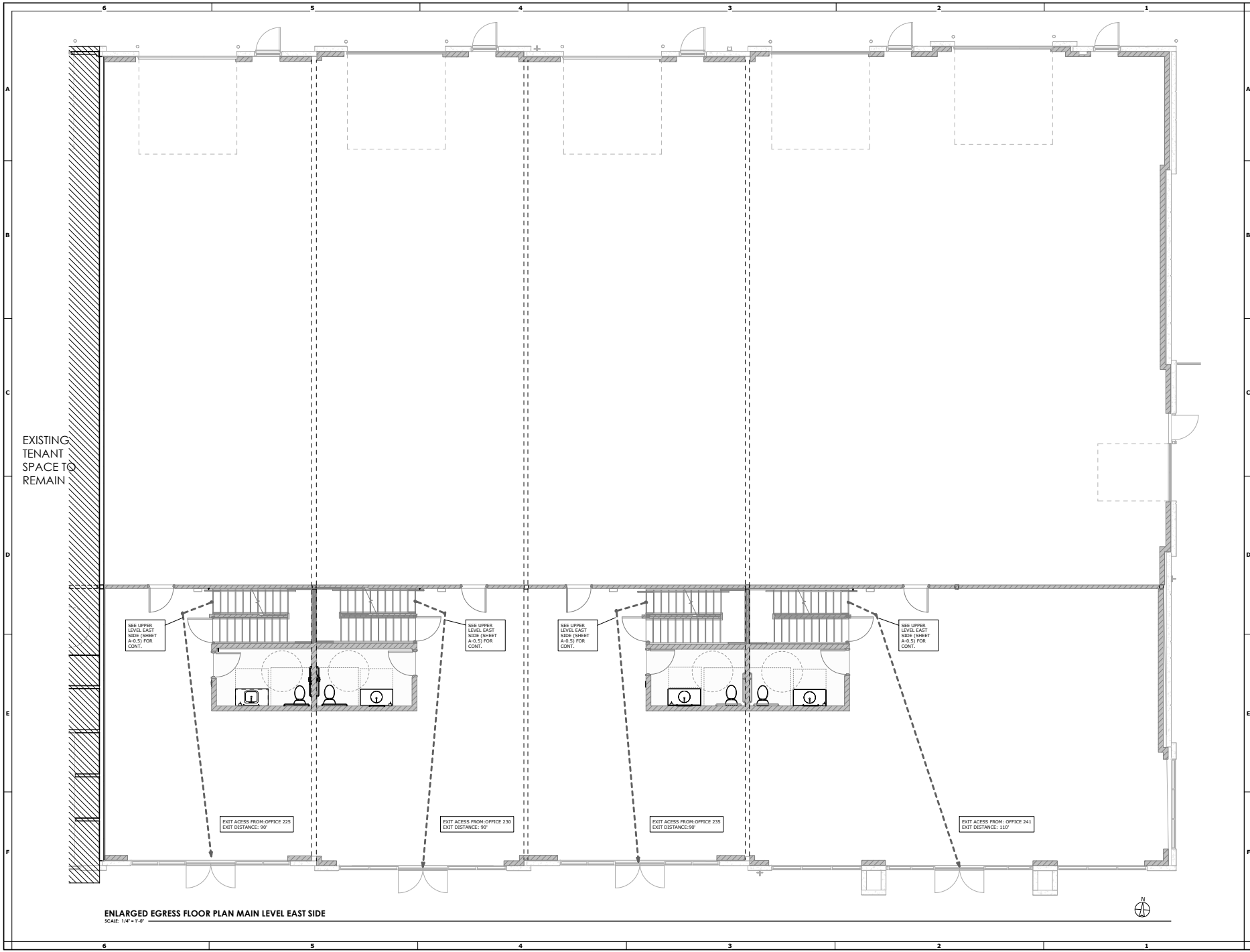
REGISTERED ARCHITECT
 STATE OF IDAHO
 LICENSE NUMBER: AR-86333

NEW TENANT IMPROVEMENT FOR:
CHISHOLM TI - NAMPA
 EAST CHISHOLM DRIVE, NAMPA, ID

DATE:	SEPT. 2025
DRAWN BY:	WS
CHECKED BY:	CS
JOB NUMBER:	MKT25

EGRESS FLOOR PLAN
 EAST SIDE
 UPPER LEVEL

A-0.5



ENLARGED EGRESS FLOOR PLAN MAIN LEVEL EAST SIDE

SCALE: 1/4" = 1'-0"

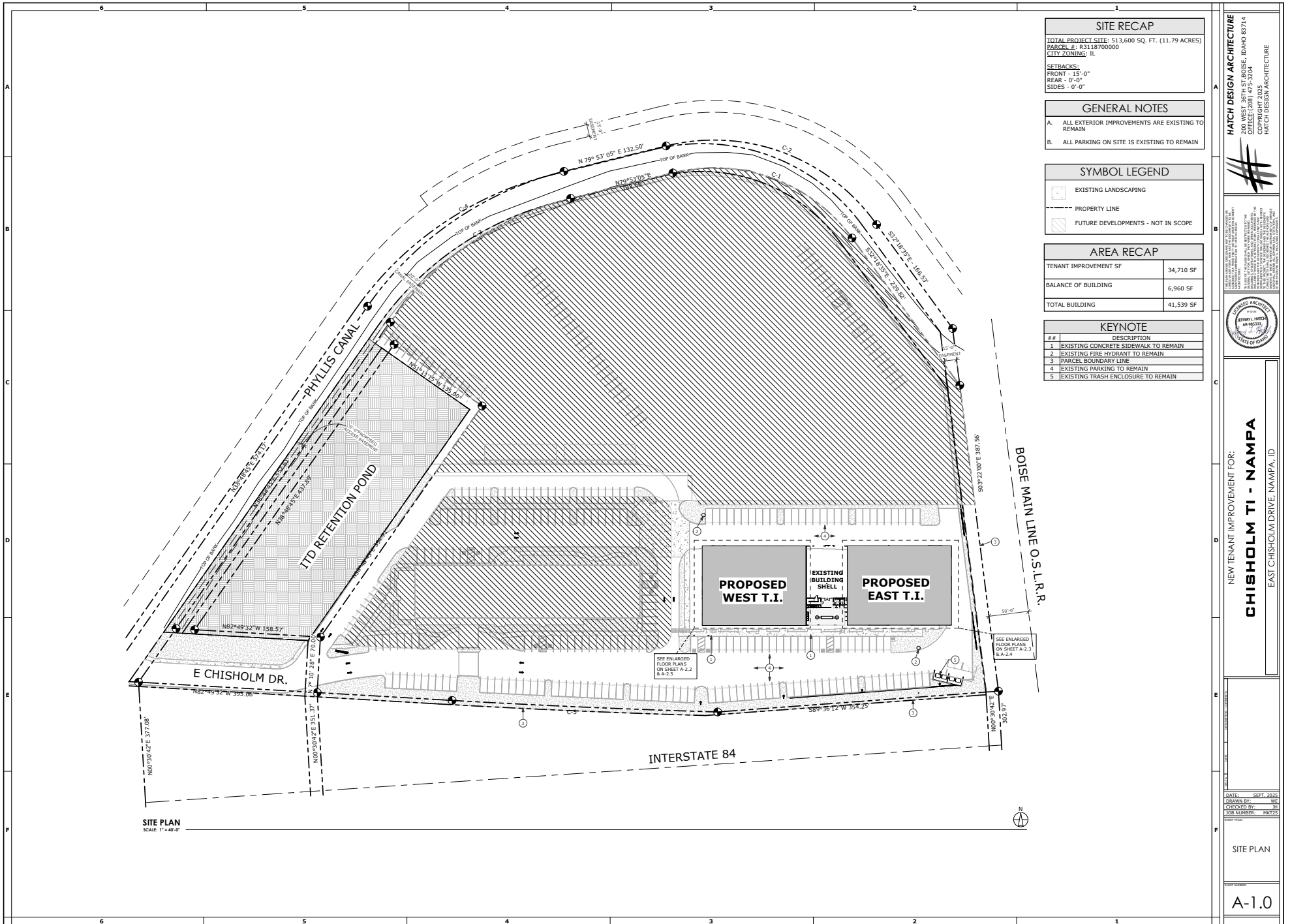
HATCH DESIGN ARCHITECTURE
 200 WEST 36TH ST. BOISE, IDAHO 83714
 OFFICE: (208) 475-504
 HATCH DESIGN ARCHITECTURE

NEW TENANT IMPROVEMENT FOR:
CHISHOLM TI - NAMPA
 EAST CHISHOLM DRIVE, NAMPA, ID

DATE:	SEPT. 2025
DRAWN BY:	WS
CHECKED BY:	CS
JOB NUMBER:	MKT25

EGRESS FLOOR PLAN
 EAST SIDE
 MAIN LEVEL

A-0.6



SITE PLAN
SCALE: 1" = 40'-0"

SITE RECAP	
TOTAL PROJECT SITE:	513,600 SQ. FT. (11.79 ACRES)
PARCEL #:	R3118700000
CITY ZONING:	IL
SETBACKS:	
FRONT -	15'-0"
REAR -	0'-0"
SIDES -	0'-0"

GENERAL NOTES	
A.	ALL EXTERIOR IMPROVEMENTS ARE EXISTING TO REMAIN
B.	ALL PARKING ON SITE IS EXISTING TO REMAIN

SYMBOL LEGEND	
	EXISTING LANDSCAPING
	PROPERTY LINE
	FUTURE DEVELOPMENTS - NOT IN SCOPE

AREA RECAP	
TENANT IMPROVEMENT SF	34,710 SF
BALANCE OF BUILDING	6,960 SF
TOTAL BUILDING	41,539 SF

KEYNOTE	
#	DESCRIPTION
1	EXISTING CONCRETE SIDEWALK TO REMAIN
2	EXISTING FIRE HYDRANT TO REMAIN
3	PARCEL BOUNDARY LINE
4	EXISTING PARKING TO REMAIN
5	EXISTING TRASH ENCLOSURE TO REMAIN

HATCH DESIGN ARCHITECTURE
200 WEST 36TH ST. BOISE, IDAHO 83714
OFFICE: (208) 475-5204
HATCH DESIGN ARCHITECTURE

NEW TENANT IMPROVEMENT FOR:
CHISHOLM TI - NAMPA
EAST CHISHOLM DRIVE, NAMPA, ID

DATE: SEPT. 2025
DRAWN BY: WE
CHECKED BY: JL
JOB NUMBER: MKT25

SITE PLAN

A-1.0