

**FOR SALE OR LEASE**

Owned and Operated by



# Savannah River International Trade Park

301 Little Hearst Parkway, Port Wentworth, Georgia

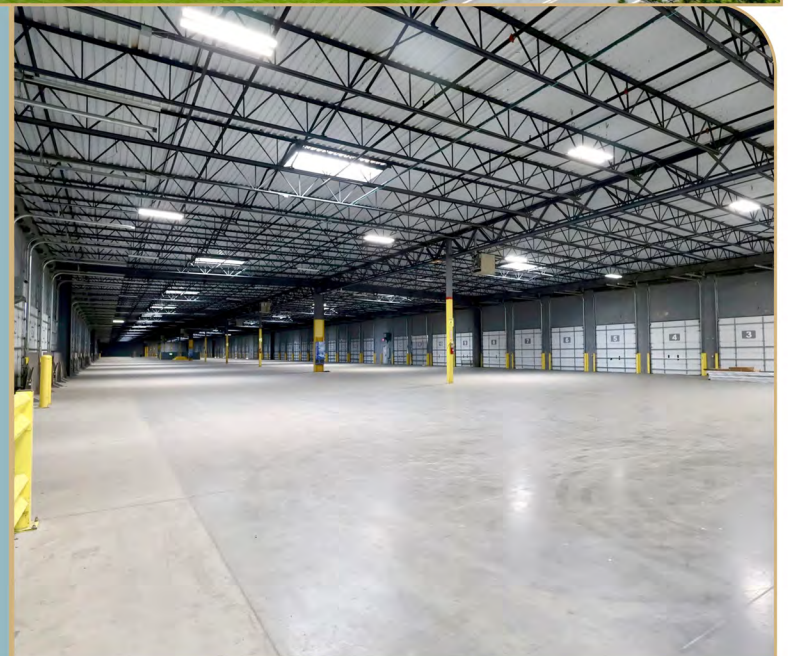
## ±70,198 SF Transload Facility

Less than 6 miles from GPA Garden City Terminal



### SPECIFICATIONS

<b>Building Size</b>	70,198 SF
<b>Office Size</b>	2,525 SF
<b>Dock Doors</b>	100 Doors
<b>Car Parking</b>	142 Spaces
<b>Trailer Parking</b>	251 Spaces
<b>Additional Trailer Yard Parking</b>	241 Spaces



### BROKER INFO & CONTACT

**Hilary Shipley, SIOR**

(912) 662-8013 / [hilary.shipley@colliers.com](mailto:hilary.shipley@colliers.com)





±2,525 SF Office



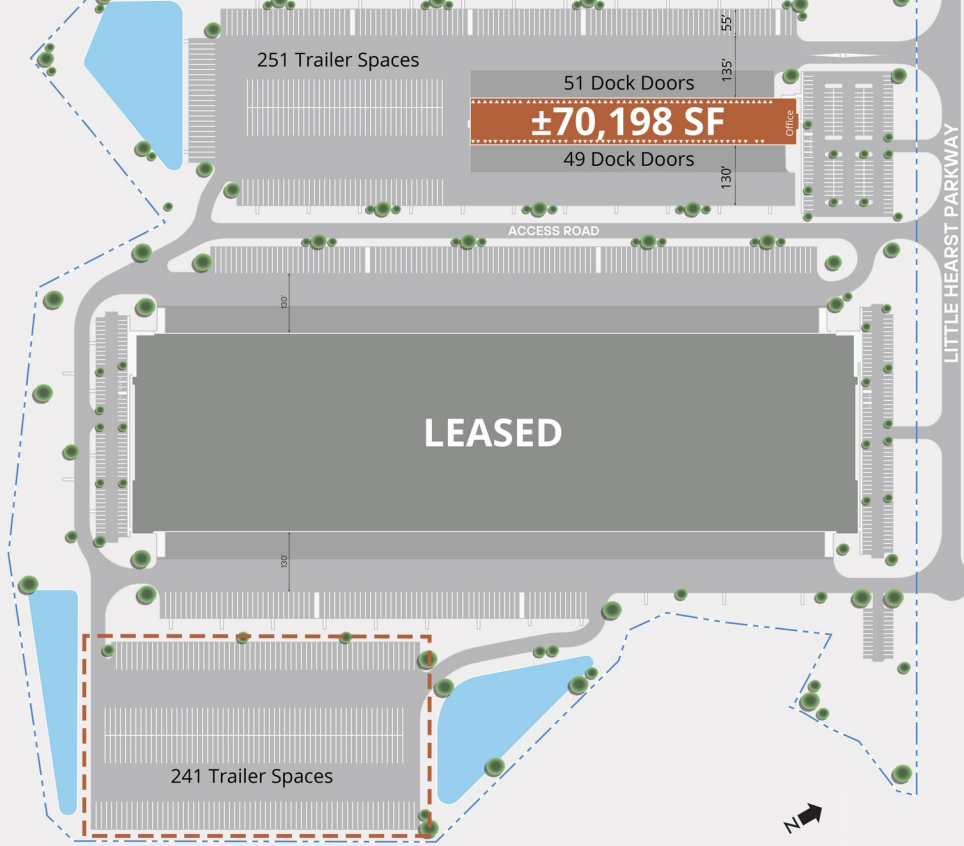
Additional Trailer Yard Parking: 241 Spaces

## Property Overview

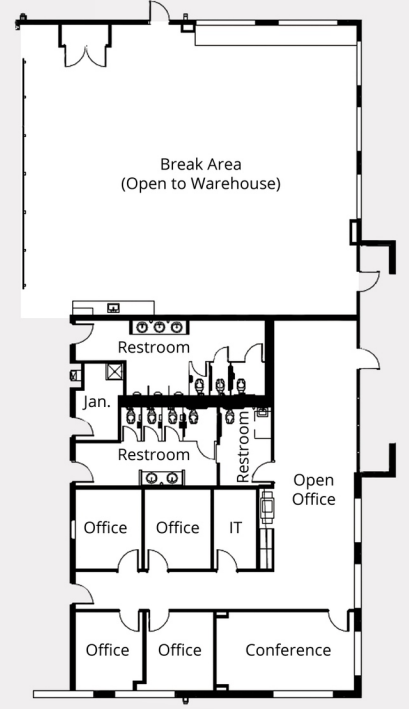
Located just minutes from the Port of Savannah, 301 Little Hearst Parkway is a ±70,198 SF state-of-the-art transload facility available for lease or sale in Port Wentworth, GA. Designed for high-volume logistics operations, the property features 2,525 SF of office space, 100 dock doors, 251 on-site trailer parking spaces, and access to an additional 241 trailer spaces at a nearby yard. This premier location offers unmatched access to major transportation routes, including Interstate 95 (2.3 miles), Interstate 16 (11.4 miles), Highway 21, and Jimmy DeLoach Parkway—making it an ideal solution for port-centric distribution and cross-dock users.



SITE PLAN



OFFICE PLAN - ±2,525 SF



LOCATION OVERVIEW

Highway 21	1.3 Miles
Interstate 95	2.3 Miles
Jimmy Deloach Parkway	4.4 Miles
GPA Garden City Terminal	5.3 Miles
SAV/HH International Airport	6.2 Miles
GPA Ocean Terminal	10.1 Miles
Interstate 16	11.4 Miles
Hyundai Motor Group EV Plant	27.2 Miles
Charleston, SC	103 Miles
Jacksonville, FL	141 Miles
Atlanta, GA	247 Miles

