

AGRICULTURAL INDUSTRIAL

42,500SF ON 4.29 ACRES JUST OUTSIDE CORVALLIS



27630 LLEWELLYN RD
CORVALLIS, OR 97333

PRESENTED BY TRADITION REAL ESTATE PARTNERS

TABLE OF CONTENTS

1. PROPERTY DESCRIPTION

2. LOCATION

3. ZONING

4. PROPERTY HIGHLIGHTS

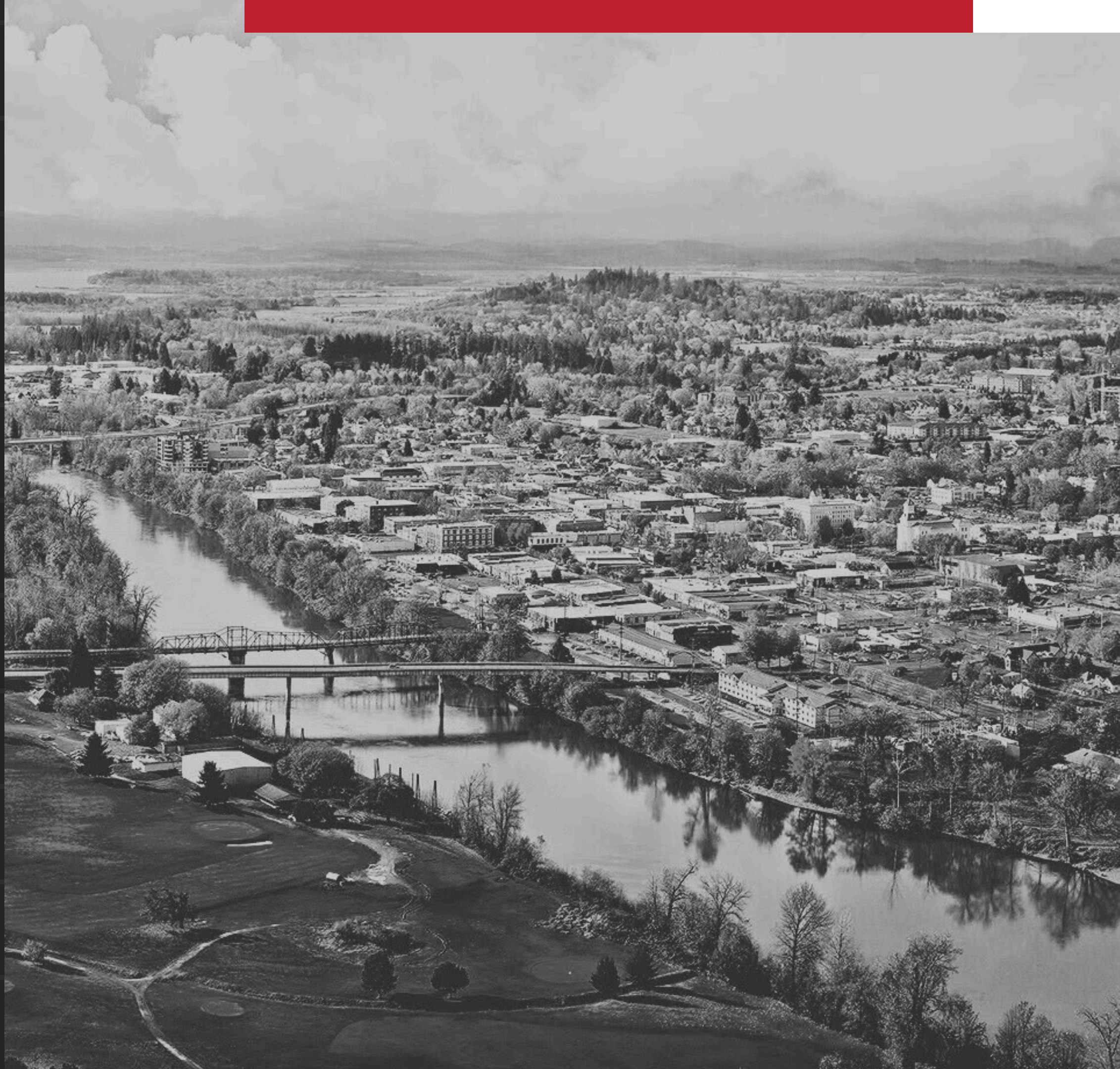
5. LEASED SPACE

6. FLOORPLAN

7. IMAGES

8. NEARBY AMENITIES

9. BROKERS



PROPERTY DESCRIPTION



27630 LLEWELLYN RD PRESENTS A PRIME 4.29-ACRE AGRICULTURAL-INDUSTRIAL PROPERTY FOR SALE OR LEASE IN THE HEART OF THE WILLAMETTE VALLEY. BOASTING PROMINENT HWY 99 FRONTAGE, THIS 42,500 SF FACILITY OFFERS EXCEPTIONAL VISIBILITY AND ACCESSIBILITY, MAKING IT IDEAL FOR AGRICULTURAL PROCESSING, STORAGE, MANUFACTURING, OR DISTRIBUTION. THE PROPERTY FEATURES EXPANSIVE WAREHOUSE SPACES, PLENTIFUL OFFICE AREAS, 3-PHASE 800-AMP POWER, 18' CLEAR HEIGHT, AND MULTIPLE DOCK-HIGH AND GRADE-LEVEL DOORS TO SUPPORT EFFICIENT OPERATIONS. WITH APPROXIMATELY 32,427SF OF AVAILABLE WAREHOUSE SPACE AND ITS STRATEGIC LOCATION IN A THRIVING AGRICULTURAL HUB, THIS PROPERTY COMBINES VERSATILITY, CONNECTIVITY, AND GROWTH OPPORTUNITIES.



LOCATION

- **LOCATION: 27630 LLEWELLYN RD, CORVALLIS, OR 97330**
- **BUILDING SIZE: 42,500 SQFT**
- **LOT SIZE: 4.29 ACRES**
- **ZONING: AGRICULTURAL INDUSTRIAL (AI)**
- **ACCESSIBILITY: 4 MILES FROM CORVALLIS, 16 MILES FROM I-5, 30 MILES TO EUGENE**



CORVALLIS



**SURROUNDED BY OVER 8000
ACRES OF AG LAND**



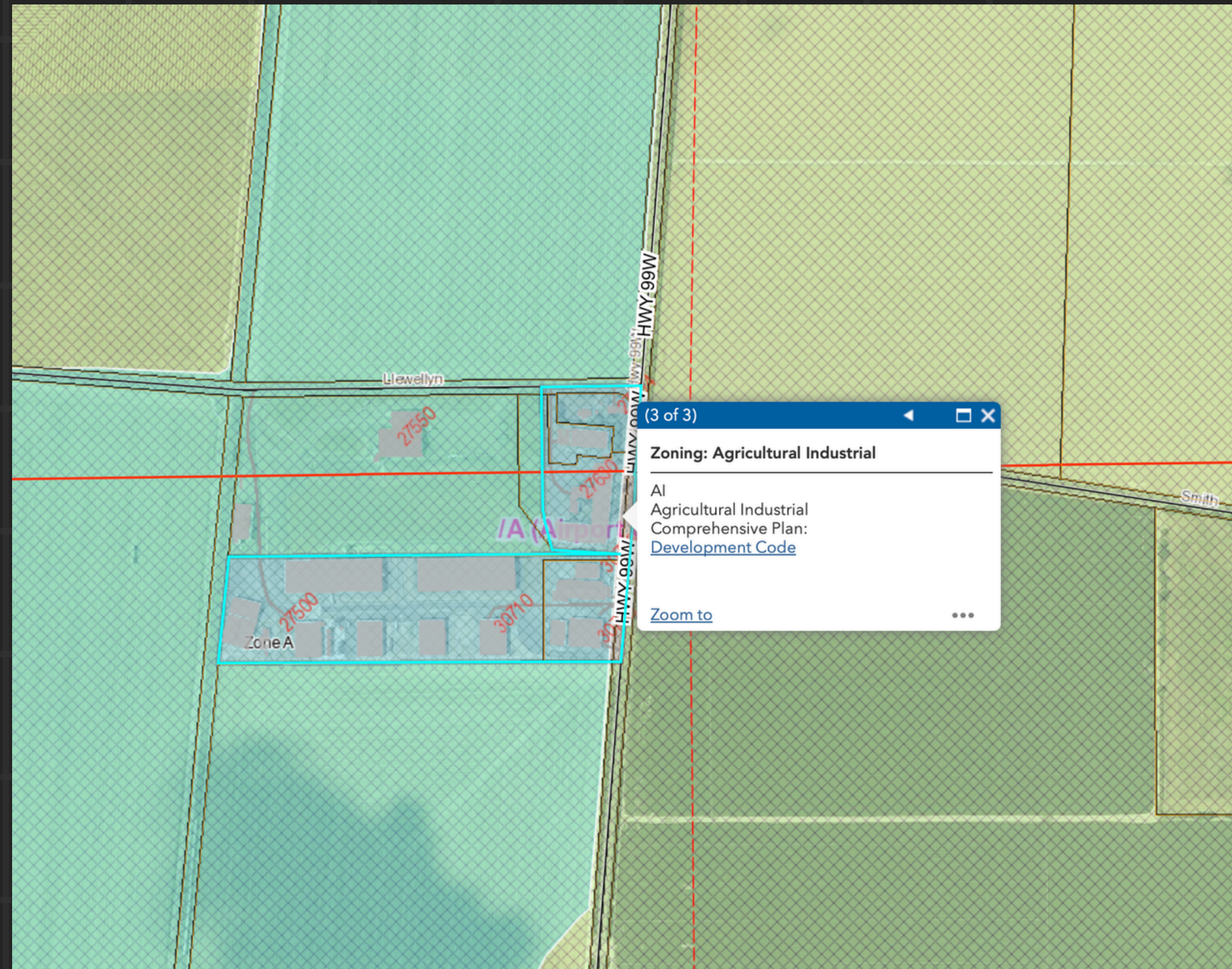
**LESS THAN A MILE FROM
CORVALLIS AIRPORT**



ZONING



SCAN FOR
AGRICULTURAL
INDUSTRIAL
ZONE CODE



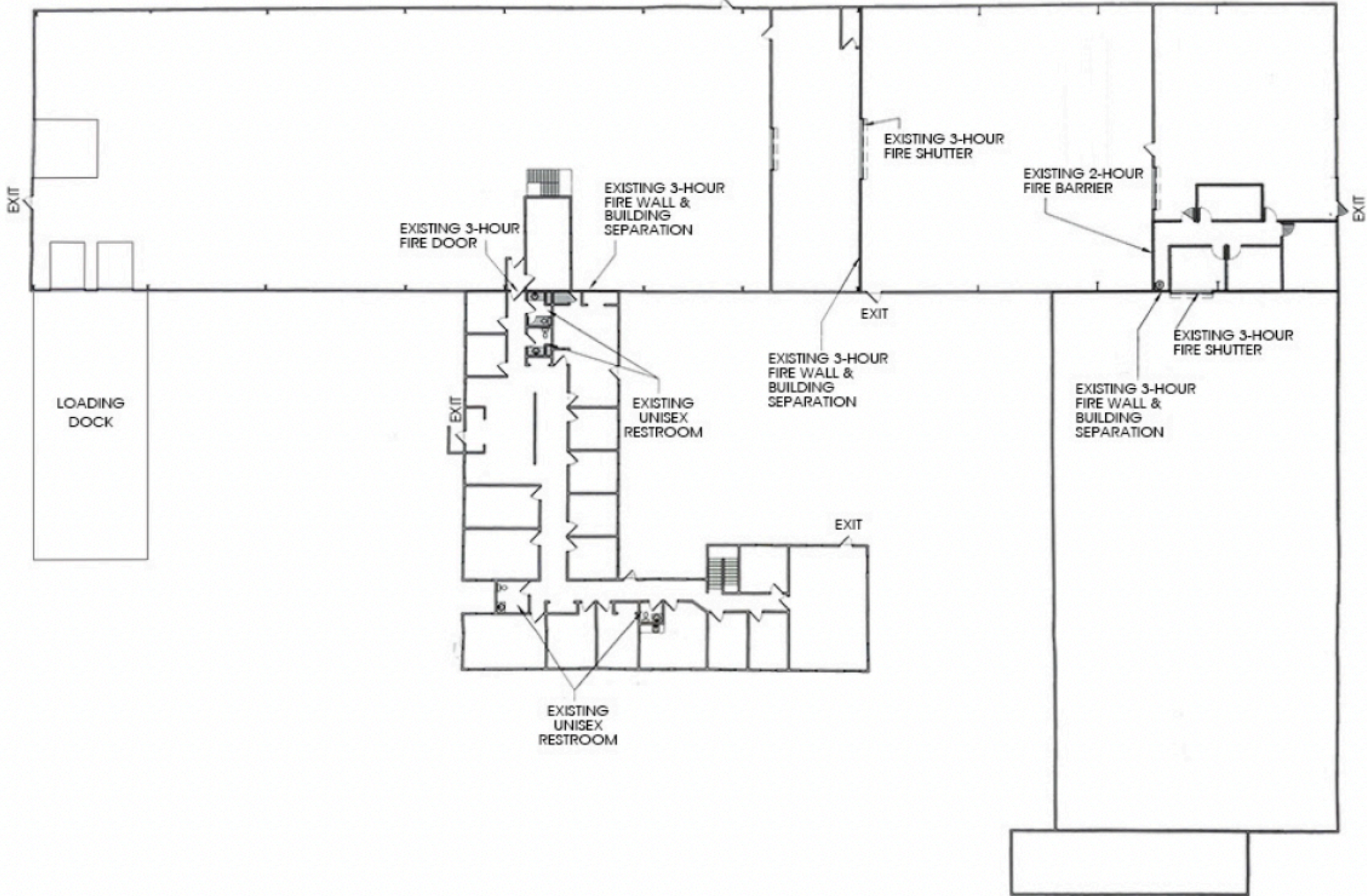
ZONING

PROPERTY HIGHLIGHTS



- **3 DOCK DOORS**
- **18FT CLEAR HEIGHT**
- **1 DRIVE IN BAY**
- **HWY 99 FRONTAGE**
- **3-PHASE 800-AMP POWER**
- **BUILT IN 1993**

FLOOR PLAN



IMAGES |



IMAGES |



IMAGES |



IMAGES |



IMAGES |



IMAGES |



IMAGES |



IMAGES |



NEARBY AMENITIES



Oregon State University



Avery Pk & Natural Area

Corvallis



Riverside

Albany

Corvallis Municipal Airport

Dry Creek

Subject Property

BROKERS



TRADITION
REAL ESTATE

LEASE

\$5.99 SF/YR

SALE

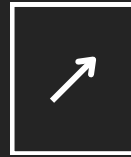
\$2,695,000



BROKERS

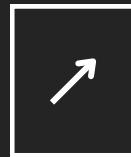


TRADITION
REAL ESTATE



DAVE SMITH
PRINCIPAL BROKER

503.939.7099
DAVE@TRADITIONREP.COM



MATT BASSIST
PRINCIPAL BROKER

503.998.9817
MATT@TRADITIONREP.COM



BROKERS



TRADITION REAL ESTATE

IMPORTANT DISCLOSURES

THIS OFFERING MEMORANDUM (THE "MEMORANDUM") HAS BEEN PREPARED BY TRADITION REAL ESTATE PARTNERS FOR INFORMATIONAL PURPOSES ONLY. THE INFORMATION CONTAINED HEREIN IS BELIEVED TO BE RELIABLE, BUT NO REPRESENTATION OR WARRANTY, EXPRESS OR IMPLIED, IS MADE REGARDING ITS ACCURACY, COMPLETENESS, OR CORRECTNESS. PROSPECTIVE PURCHASERS ARE ENCOURAGED TO CONDUCT THEIR OWN DUE DILIGENCE AND CONSULT WITH THEIR ADVISORS BEFORE MAKING ANY INVESTMENT DECISION.

THIS MEMORANDUM IS NOT AN OFFER TO SELL OR A SOLICITATION OF AN OFFER TO BUY ANY SECURITIES OR INTERESTS IN THE PROPERTY. ANY OFFERING OR SOLICITATION WILL BE MADE ONLY TO QUALIFIED PROSPECTIVE PURCHASERS PURSUANT TO APPLICABLE LAWS AND REGULATIONS. THE INFORMATION CONTAINED IN THIS MEMORANDUM IS CONFIDENTIAL AND IS INTENDED SOLELY FOR THE USE OF THE RECIPIENT. IT MAY NOT BE REPRODUCED OR DISTRIBUTED, IN WHOLE OR IN PART, WITHOUT THE PRIOR WRITTEN CONSENT OF TRADITION REAL ESTATE PARTNERS.

PROSPECTIVE PURCHASERS SHOULD RELY SOLELY ON THEIR OWN INVESTIGATION AND EVALUATION OF THE PROPERTY AND ANY INVESTMENT DECISION SHOULD BE MADE BASED ON THE PURCHASER'S OWN ANALYSIS. TRADITION REAL ESTATE PARTNERS AND ITS REPRESENTATIVES MAKE NO REPRESENTATION OR WARRANTY, EXPRESS OR IMPLIED, AS TO THE ACCURACY OR COMPLETENESS OF THE INFORMATION CONTAINED HEREIN.

BY ACCEPTING THIS MEMORANDUM, YOU AGREE TO THE ABOVE TERMS AND CONDITIONS.